

NARRATIVE:

THE PURPOSE OF THIS SURVEY WAS TO ADJUST PROPERTY LINES OF TAX LOTS 203 & 205, AND TAX LOTS 701 & 702 AS SHOWN ON THE DRAWING. PROPERTY LINES ACCEPTED BASED ON FOUND MONUMENTATION OF PREVIOUS SURVEYS. THESE MONUMENTS WERE ENOUGH EVIDENCE TO DETERMINE THE PROPERTY LINES TO BE ADJUSTED. CALCULATED POSITIONS WERE SHOWN TO RELATE THE SUBJECTS PROPERTY IN SECTIONS 32 AND 33. THESE POSITIONS WERE CALCULATED BASED ON A HOOD RIVER COUNTY SURVEY NUMBER 83079.

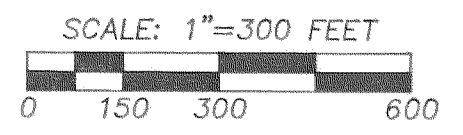
FOUND CORNERS WERE ACCEPTED AND USED AS SHOWN. REFER TO PLAT FOR DETAILS.

LOCATION OF SURVEY:

PORTION OF THE SOUTHWEST QUARTER OF THE NORTHWEST QUARTER OF SECTION 33, AND A PORTION OF THE SOUTHWEST QUARTER OF THE NORTHWEST QUARTER OF SECTION 32, ALL IN TOWNSHIP 2 NORTH, RANGE 10 EAST, WILLAMETTE MERIDIAN, HOOD RIVER COUNTY, OREGON.

BASIS OF BEARING:

N.A.D. 1983, OREGON NORTH ZONE, GRID BEARINGS.



LEGEND:

- SET 5/8" X 30" IRON ROD WITH PLASTIC CAP
- FOUND MONUMENT OF RECORD
- CALCULATED, NOT FOUND OR SET
- () DEED OR PLAT CALL

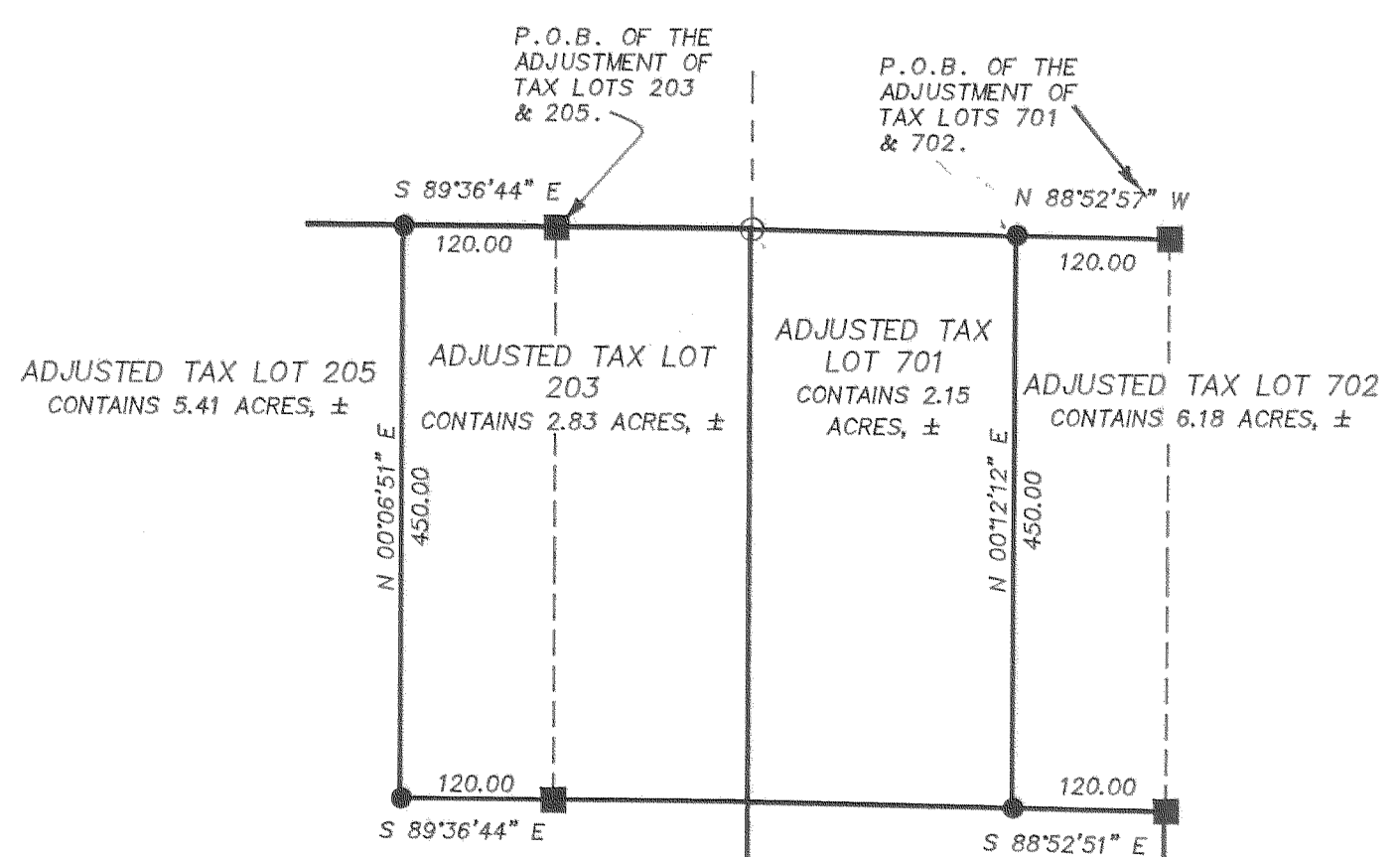
REFERENCES:

- HOOD RIVER COUNTY SURVEY No. 86009 BY PLS2038 COUNTY SURVEYOR
- HOOD RIVER COUNTY SURVEY No. 86061 BY PLS2038 COUNTY SURVEYOR
- HOOD RIVER COUNTY SURVEY FILE No. 86063 BY LS1028
- HOOD RIVER COUNTY SURVEY FILE No. 91048 BY LS1028
- HOOD RIVER COUNTY SURVEY FILE No. 93090 BY PLS2325
- HOOD RIVER COUNTY SURVEY FILE No. 99075 BY PLS 1815
- HOOD RIVER COUNTY SURVEY FILE No. 91023 BY PLS1028
- HOOD RIVER COUNTY SURVEY FILE No. 83079 BY COUNTY SURVEYOR

LINE TABLE

NO.	BEARING	DISTANCE
L1	S 00°28'55" W	199.12
L2	N 89°31'04" W	139.08
L3	S 89°36'44" E	120.00
L4	N 89°36'44" W	120.00
L5	S 88°52'57" E	120.00
L6	N 88°52'49" W	120.00
L7	S 89°36'44" E	154.00
L8	N 88°52'57" W	208.76
L9	S 89°36'44" E	154.00
L10	S 88°52'49" E	208.06
L11	N 89°36'44" W	233.58
L12	N 88°51'22" W	165.21
L13	N 88°54'14" W	165.16
L14	N 00°12'11" E	206.02

TAX LOT	EXISTING PARCEL SIZE	PROPOSED PARCEL SIZE
203	1.59 ACRES, ±	2.83 ACRES, ±
205	6.65 ACRES, ±	5.41 ACRES, ±
701	3.39 ACRES, ±	2.15 ACRES, ±
702	4.94 ACRES, ±	6.18 ACRES, ±



SKETCH NOT TO SCALE

REGISTERED PROFESSIONAL LAND SURVEYOR
 Roy O. Gaylord
 OREGON
 JULY 13, 1979
 ROY O. GAYLORD
 1815
 Expires June, 2007

TERRA SURVEYING

DATE: JULY, 2005
 SCALE: 1" = 300'
 PROJECT: 205026ADJUSTMENTS

P.O. BOX 617
 HOOD RIVER, OREGON 97031
 PHONE & FAX: (541) 386-4531
 E-Mail: terra@gorge.net

TAX MAP 2N - 10 -32, TAX LOTS 203 & 205.
 TAX MAP 2N - 10 -33, TAX LOTS 701 & 702.

2 BOUNDARY LINE ADJUSTMENT SURVEYS
 for
 DOUGLAS AND TERI ADAMS, ET AL.

FILED

AUG 4 2005
 Royal Plats
 COUNTY CLERK

Rec'd: 8-2-05 1600

CS 2005 061