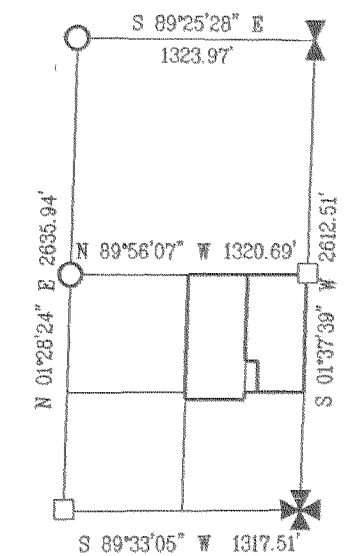
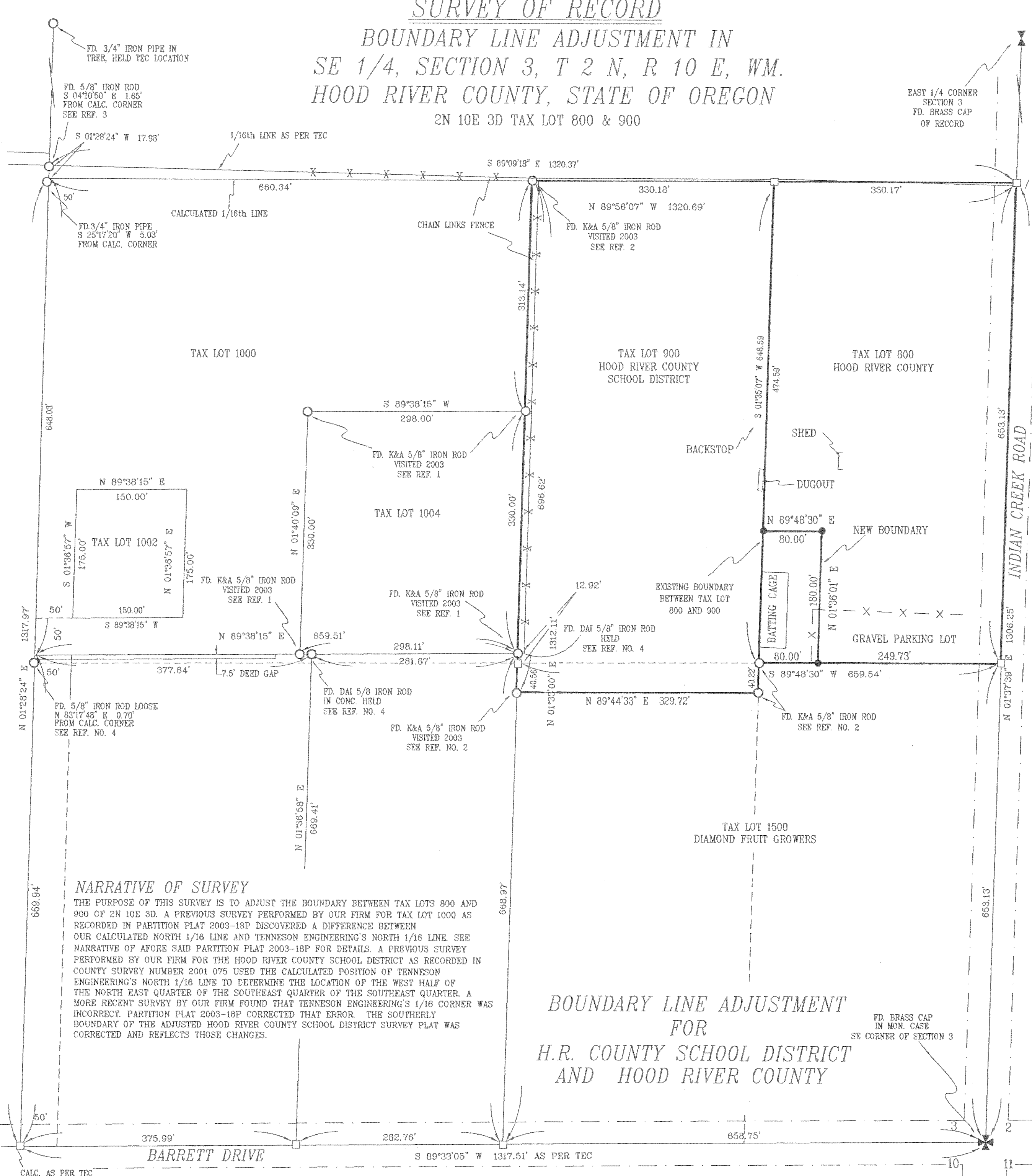
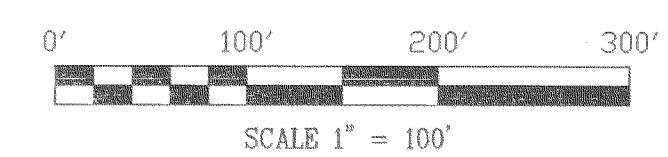


SURVEY OF RECORD
BOUNDARY LINE ADJUSTMENT IN
SE 1/4, SECTION 3, T 2 N, R 10 E, WM.
HOOD RIVER COUNTY, STATE OF OREGON
2N 10E 3D TAX LOT 800 & 900



BREAKDOWN
NOT TO SCALE



REFERENCE SURVEYS

- 1.) SURVEY BY K & A P.P. 2003-18P
- 2.) SURVEY BY K & A CS #2001-075
- 3.) SURVEY BY TEC CS #7262
- 4.) SURVEY BY D.A.S. #7338
- 5.) HOOD RIVER COUNTY SURVEY COORDINATES SECTION 3

LEGEND

- = SET 5/8" IR WITH PLASTIC CAP MARKED OR #932 & WA #22098 EXCEPT AS NOTED
- = FOUND MONUMENT AS NOTED
- = CALCULATED CORNER AS NOTED
- K & A = KLEIN & ASSOCIATES
- T.E.C. = TENNESON ENGINEERING
- D.A.I. = DIELSCHNEIDER ASSOCIATES INC.
- CALC. = CALCULATED
- FD. = FOUND
- MON. = MONUMENT
- REF. NO. = REFERENCE NUMBER

AREA NOTE:
NOTE TAX LOT 800 ACREAGE INCLUDES THE RIGHT-OF-WAY OF INDIAN CREEK ROAD.

AREA	TAX LOT 900	TAX LOT 800
NEW AREA	243860 SQ. FT. 5.60 ACRES	201236 SQ. FT. 4.62 ACRES
OLD AREA	229467 SQ. FT. 5.27 ACRES	215629 SQ. FT. 4.95 ACRES
AREA TRANSFER	14393 SQ. FT. 0.33 ACRES	14393 SQ. FT. 0.33 ACRES

NARRATIVE OF SURVEY
 THE PURPOSE OF THIS SURVEY IS TO ADJUST THE BOUNDARY BETWEEN TAX LOTS 800 AND 900 OF 2N 10E 3D. A PREVIOUS SURVEY PERFORMED BY OUR FIRM FOR TAX LOT 1000 AS RECORDED IN PARTITION PLAT 2003-18P DISCOVERED A DIFFERENCE BETWEEN OUR CALCULATED NORTH 1/16 LINE AND TENNESON ENGINEERING'S NORTH 1/16 LINE. SEE OUR NARRATIVE OF AFORE SAID PARTITION PLAT 2003-18P FOR DETAILS. A PREVIOUS SURVEY PERFORMED BY OUR FIRM FOR THE HOOD RIVER COUNTY SCHOOL DISTRICT AS RECORDED IN COUNTY SURVEY NUMBER 2001 075 USED THE CALCULATED POSITION OF TENNESON ENGINEERING'S NORTH 1/16 LINE TO DETERMINE THE LOCATION OF THE WEST HALF OF THE NORTH EAST QUARTER OF THE SOUTHEAST QUARTER OF THE SOUTHEAST QUARTER. A MORE RECENT SURVEY BY OUR FIRM FOUND THAT TENNESON ENGINEERING'S 1/16 CORNER WAS INCORRECT. PARTITION PLAT 2003-18P CORRECTED THAT ERROR. THE SOUTHERLY BOUNDARY OF THE ADJUSTED HOOD RIVER COUNTY SCHOOL DISTRICT SURVEY PLAT WAS CORRECTED AND REFLECTS THOSE CHANGES.

BOUNDARY LINE ADJUSTMENT
FOR
H.R. COUNTY SCHOOL DISTRICT
AND HOOD RIVER COUNTY

FILED

JAN 10 2005
Anthony C. Klein
 COUNTY CLERK
 HOOD RIVER, OREGON

REGISTERED
PROFESSIONAL
LAND SURVEYOR

OREGON
 JULY 17, 1970
ANTHONY C. KLEIN
 932
 Expires 6-30-05

Klein & Assoc.
 LAND SURVEYING
 1412 13th STREET
 Hood River, Oregon 97031
 Tel: (541)386-3322
 DATE SURVEYED: DEC, 2004
 JOB NO: 04082

Road 1-7-05 1420

CS 2005 004