

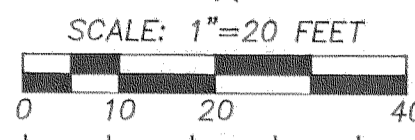
FILED

REGISTERED PROFESSIONAL LAND SURVEYOR

OREGON JULY 13, 1979 ROY O. GAYLORD 1815

DEC 30 2004

Expires: June, 2005



ASPHALT PARKING

CONCRETE BLOCK RETAINING WALL

REFERENCES:

HOOD RIVER COUNTY ASSESSORS MAP 3N-10E-36BC. HOOD RIVER COUNTY SURVEYORS OFFICE C.S.#84080. HOOD RIVER COUNTY SURVEYORS OFFICE C.S.#79099. HOOD RIVER COUNTY SURVEYORS OFFICE C.S.#77082. HOOD RIVER COUNTY SURVEYORS OFFICE C.S.#83000.

LOCATION OF SURVEY:

PORTION OF THE SHEPLER'S SUBDIVISION PLAT LOCATED IN THE SOUTHWEST QUARTER OF THE NORTHWEST QUARTER OF SECTION 36, TOWNSHIP 3 NORTH, RANGE 10 EAST, WILLAMETTE MERIDIAN, IN THE CITY OF HOOD RIVER, HOOD RIVER COUNTY, OREGON.

BASIS OF BEARING:

GPS WAS USED TO DETERMINE THE COORDINATE BASE AND BASIS OF BEARING.

VERTICAL DATUM:

1986 HOOD RIVER CITY DATUM. 1' CONTOUR INTERVAL. CONTAINS 39,465 Sq. Ft., ±

NARRATIVE:

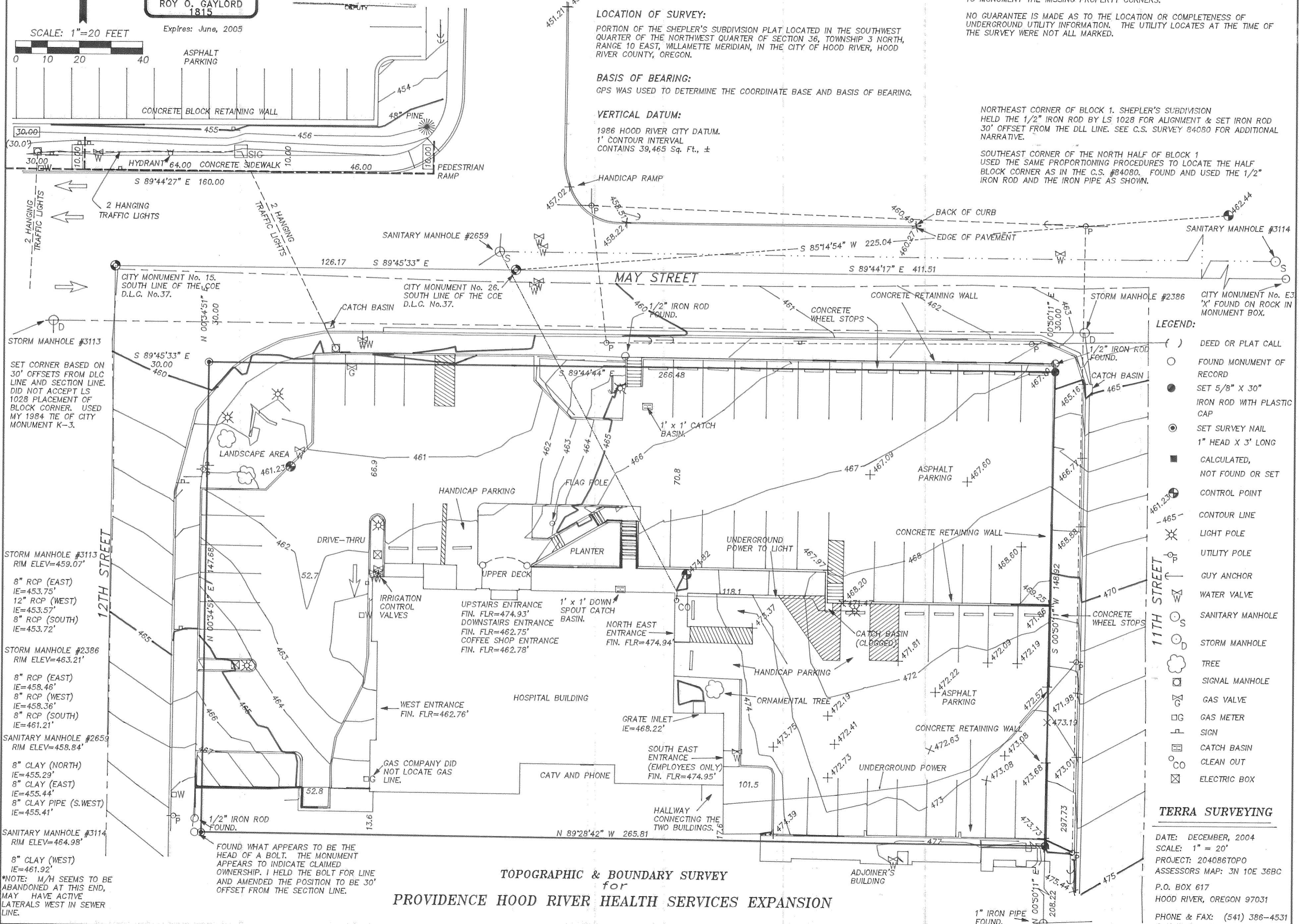
THE PURPOSE OF THIS SURVEY IS TO PROVIDE TOPOGRAPHIC DETAIL AND PROPERTY BOUNDARY LOCATION FOR LOTS 1, 2, 3, 4, 5, 6, 7 & 8 OF SHEPLER'S SUBDIVISION, BEING TAX LOT 3300 OF HOOD RIVER COUNTY ASSESSORS MAP 3N-10E-36BC.

HOOD RIVER CITY MONUMENTS WERE FOUND AND OFFSET DISTANCES WERE USED TO DETERMINE BLOCK BOUNDARIES, ALSO FOUND MONUMENTS OF RECORD AND PROPORTIONED THE RECORD DISTANCES WITH THOSE MEASURED TO MONUMENT THE MISSING PROPERTY CORNERS.

NO GUARANTEE IS MADE AS TO THE LOCATION OR COMPLETENESS OF UNDERGROUND UTILITY INFORMATION. THE UTILITY LOCATES AT THE TIME OF THE SURVEY WERE NOT ALL MARKED.

NORTHEAST CORNER OF BLOCK 1, SHEPLER'S SUBDIVISION HELD THE 1/2" IRON ROD BY LS 1028 FOR ALIGNMENT & SET IRON ROD 30" OFFSET FROM THE DLL LINE. SEE C.S. SURVEY 84080 FOR ADDITIONAL NARRATIVE.

SOUTHEAST CORNER OF THE NORTH HALF OF BLOCK 1 USED THE SAME PROPORTIONING PROCEDURES TO LOCATE THE HALF BLOCK CORNER AS IN THE C.S. #84080. FOUND AND USED THE 1/2" IRON ROD AND THE IRON PIPE AS SHOWN.



SET CORNER BASED ON 30' OFFSETS FROM DLC LINE AND SECTION LINE. DID NOT ACCEPT LS 1028 PLACEMENT OF BLOCK CORNER. USED MY 1984 TIE OF CITY MONUMENT K-3.

STORM MANHOLE #3113 RIM ELEV=459.07' 8" RCP (EAST) IE=453.75' 12" RCP (WEST) IE=453.57' 8" RCP (SOUTH) IE=453.72'

STORM MANHOLE #2386 RIM ELEV=463.21' 8" RCP (EAST) IE=458.46' 8" RCP (WEST) IE=458.36' 8" RCP (SOUTH) IE=461.21'

SANITARY MANHOLE #2659 RIM ELEV=458.84' 8" CLAY (NORTH) IE=455.29' 8" CLAY (EAST) IE=455.44' 8" CLAY PIPE (S.WEST) IE=455.41'

SANITARY MANHOLE #3114 RIM ELEV=464.98' 8" CLAY (WEST) IE=461.92'

*NOTE: M/H SEEMS TO BE ABANDONED AT THIS END, MAY HAVE ACTIVE LATERALS WEST IN SEWER LINE.

FOUND WHAT APPEARS TO BE THE HEAD OF A BOLT. THE MONUMENT APPEARS TO INDICATE CLAIMED OWNERSHIP. I HELD THE BOLT FOR LINE AND AMENDED THE POSITION TO BE 30' OFFSET FROM THE SECTION LINE.

TOPOGRAPHIC & BOUNDARY SURVEY for PROVIDENCE HOOD RIVER HEALTH SERVICES EXPANSION

LEGEND:

- () DEED OR PLAT CALL
O FOUND MONUMENT OF RECORD
● SET 5/8" X 30" IRON ROD WITH PLASTIC CAP
⊙ SET SURVEY NAIL 1" HEAD X 3" LONG
■ CALCULATED, NOT FOUND OR SET
● CONTROL POINT
-465- CONTOUR LINE
☀ LIGHT POLE
⊕ UTILITY POLE
⊙ GUY ANCHOR
⊕ WATER VALVE
⊙ SANITARY MANHOLE
⊙ STORM MANHOLE
☁ TREE
⊕ SIGNAL MANHOLE
⊕ GAS VALVE
⊕ GAS METER
⊕ SIGN
⊕ CATCH BASIN
⊕ CLEAN OUT
⊕ ELECTRIC BOX

TERRA SURVEYING

DATE: DECEMBER, 2004
SCALE: 1" = 20'
PROJECT: 204086TOPO
ASSESSORS MAP: 3N 10E 36BC
P.O. BOX 617
HOOD RIVER, OREGON 97031
PHONE & FAX: (541) 386-4531
E-Mail: terra@gorge.net

Draw: 12-28-04 0941

CS 2004 085