

File Number 200413 P
Instrument received on the 23 day of
November, 2004 at 11:37 A.M.

Sandra E Berry
Hood River County Director of Records
and Assessments.

SURVEYOR'S CERTIFICATE
I, Roy O. Gaylor,
being first duly sworn, depose and say that I have
correctly surveyed and marked with proper
monuments the lands represented on this Partition
Plat, the boundaries being described in Instrument
number 20037836, recorded December 30, 2003
Hood River County Deed Records to
Summit Trade, INC., a Washington Corporation.

REGISTERED
PROFESSIONAL
LAND SURVEYOR

Roy O. Gaylor
OREGON
JULY 13, 1979
ROY O. GAYLORD
1815
Expires: June, 2005

ACKNOWLEDGMENTS
We the owner(s) of the land shown herein, hereby
declare that this division of land has been made with
our free consent and in accordance with our desires.
Jamara Simpson, Pres. 11/2/04
President Date

STATE OF Oregon }
COUNTY OF Hood River } s.s.
Subscribed and sworn to before me on this
23rd day of November, 2004
by Janis S. Gaylor
PRINT NAME Janis S. Gaylor
NOTARY PUBLIC - OREGON
COMMISSION NO. 351940
MY COMMISSION EXPIRES 12-12-05
(Seal)

APPROVALS
I hereby certify that all taxes and assessments due
hereon have been fully paid as required by law.
Jamara Simpson
Hood River County Director of Budget and
Finance

I hereby certify this partition was ex-
amined and approved as of this 12th day
of NOVEMBER, 2004.
Roy O. Gaylor
Hood River County Surveyor

I hereby certify this partition was ex-
amined and approved as of this 15 day
of NOVEMBER, 2004.
Planning File Number 2004-06
[Signature]
City of Hood River Planning Director

NARRATIVE:

THE PURPOSE OF THIS SURVEY IS TO CREATE A TOWNHOUSE PARTITION OF
THE LAND DESCRIBED BY HOOD RIVER COUNTY MICROFILM #20037836, BEING
TAX LOT 1603 OF HOOD RIVER COUNTY ASSESSORS MAP 3N-10E-36AB. THE
CENTER LINE OF THE 12 INCH COMMON FOUNDATION WALL OF THE TOWNHOUSE
AS CONSTRUCTED WAS USED AS THE DIVIDING LINE FOR THE TWO NEW LOTS.

NEW MONUMENTS WERE SET AT THE CORNERS OF THE ORIGINAL LOT 6 OF
BLOCK 2 AS DERIVED BY HOOD RIVER COUNTY SURVEYORS OFFICE C.S.
#2003079. THE CONSTRUCTION OF THE NEW TOWNHOUSES DESTROYED THE
MONUMENTS SET BY TERRA SURVEYING IN NOVEMBER, 2003. THE NEW
MONUMENT WERE SET BY THE ORIGINAL CONTROL AND AT THE ORIGINAL
CALCULATED POINTS OF C.S. #2003079

LOCATION OF SURVEY:

PORTION OF THE SUBDIVISION PLAT OF WINANS ADDITION TO THE CITY OF
HOOD RIVER, LOCATED IN THE NORTHWEST QUARTER OF THE NORTHEAST
QUARTER OF SECTION 36, TOWNSHIP 3 NORTH, RANGE 10 EAST, WILLAMETTE
MERIDIAN, CITY OF HOOD RIVER, HOOD RIVER COUNTY, OREGON.

BASIS OF BEARING:

NORTH AMERICAN DATUM OF 1983 (1998 ADJUSTMENT).

REFERENCES:

HOOD RIVER COUNTY ASSESSORS MAP 3N 10 36AB, REVISED 5/5/04.
HOOD RIVER COUNTY SURVEYORS OFFICE C.S.#2003079.
HOOD RIVER COUNTY MICROFILM #20037765.
HOOD RIVER COUNTY MICROFILM #20037836.
HOOD RIVER COUNTY MICROFILM #20037837.

FILED

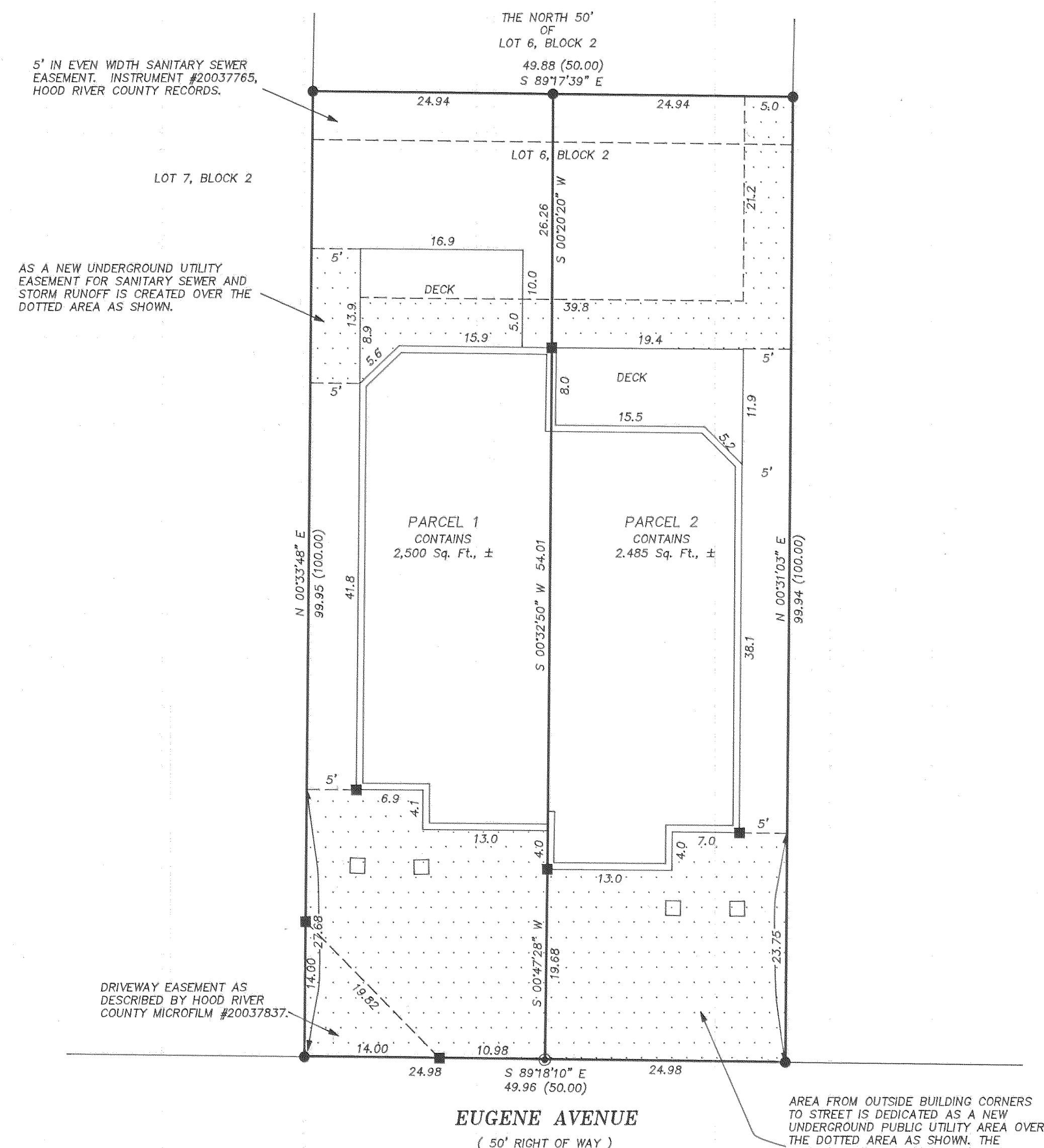
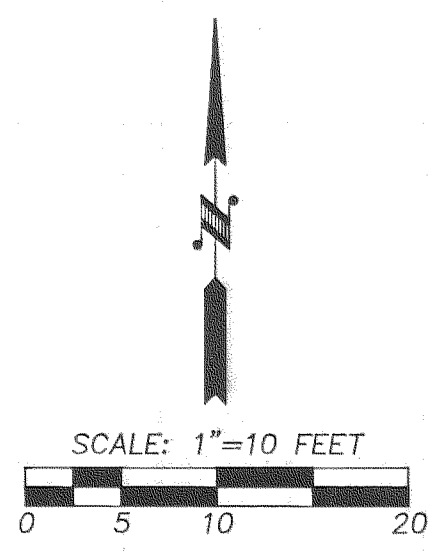
NOV 30 2004
Roy O. Gaylor
SURVEYOR

LEGEND:

- CALCULATED, NOT FOUND OR SET
- SET SCREW IN CONCRETE
- SET 5/8" X 30" IRON ROD WITH PLASTIC CAP
- () DEED OR PLAT CALL

TERRA SURVEYING

DATE: NOVEMBER, 2004
SCALE: 1" = 10'
PROJECT: 204062townhomes
ASSESSORS MAP: 3N-10-36AB
P.O. BOX 617
HOOD RIVER, OREGON 97031
PHONE & FAX: (541) 386-4531
E-Mail: terra@gorge.net



5' IN EVEN WIDTH SANITARY SEWER
EASEMENT. INSTRUMENT #20037765,
HOOD RIVER COUNTY RECORDS.

AS A NEW UNDERGROUND UTILITY
EASEMENT FOR SANITARY SEWER AND
STORM RUNOFF IS CREATED OVER THE
DOTTED AREA AS SHOWN.

DRIVEWAY EASEMENT AS
DESCRIBED BY HOOD RIVER
COUNTY MICROFILM #20037837.

AREA FROM OUTSIDE BUILDING CORNERS
TO STREET IS DEDICATED AS A NEW
UNDERGROUND PUBLIC UTILITY AREA OVER
THE DOTTED AREA AS SHOWN. THE
EXISTING UTILITIES WHICH ARE NOW
INSTALLED INCLUDE ELECTRICAL,
TELEPHONE, TV CABLE, NATURAL GAS,
DOMESTIC WATER AND SANITARY SEWER.

THE BUILDING MAINTENANCE AGREEMENT IS MADE AND SET FORTH
BY SUMMIT TRADE INC., THE OWNER OF PARCELS 1 AND 2, AND
IS FULLY DESCRIBED IN THE HOOD RIVER COUNTY DEED
INSTRUMENT FILE FOR RECORD AS MICROFILM No. _____,
RECORDED _____, 2004, HOOD
RIVER COUNTY, OREGON.

TOWNHOUSE PARTITION PLAT
for
SUMMIT TRADE INC.

1800 11-3-04 0900
11/23/04 1600

CS 2004 082