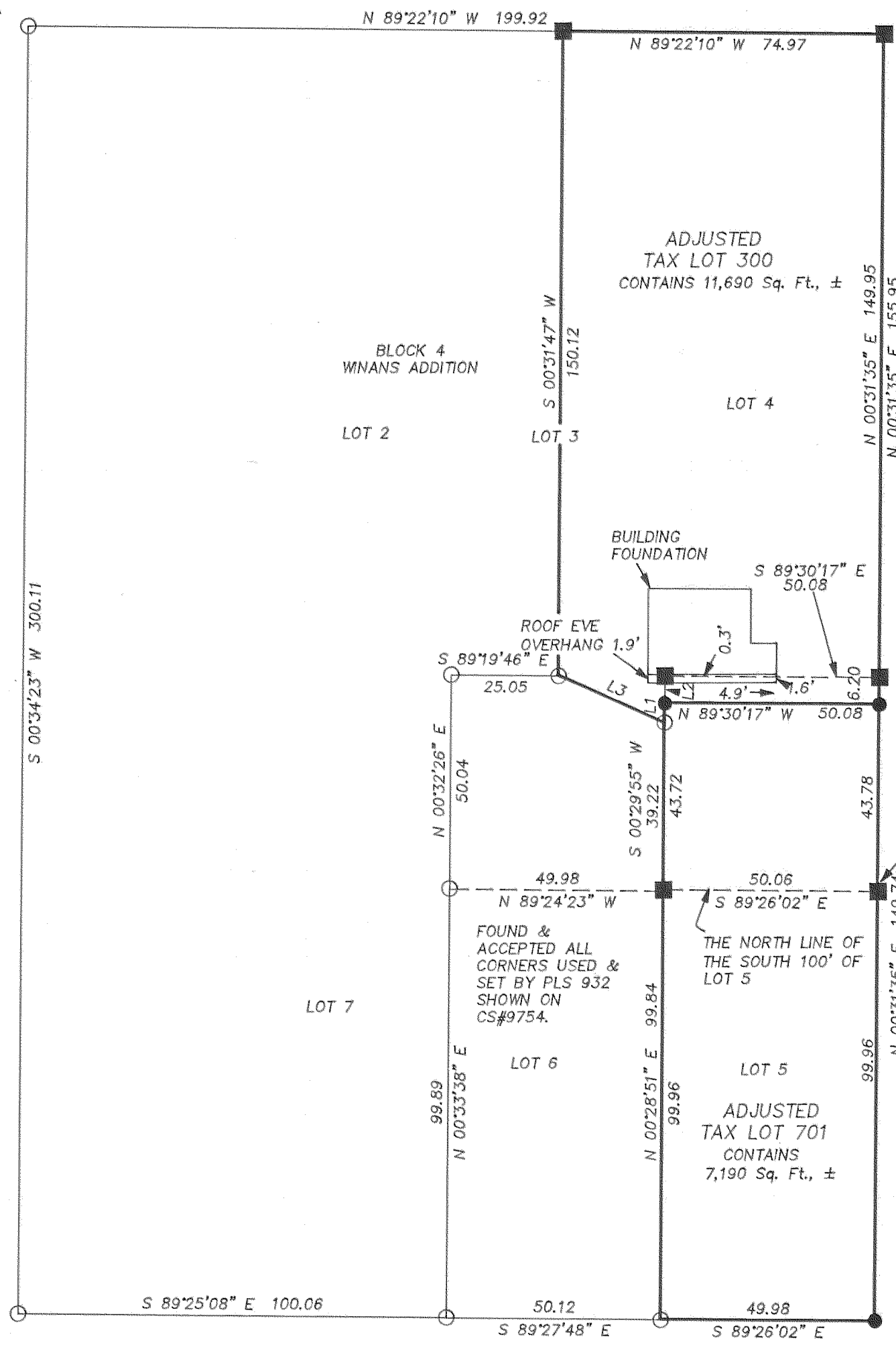


5/8" IRON ROD FOUND AT NORTHWEST CORNER OF BLOCK 4.

EAST SHERMAN STREET

EAST 3RD STREET



THIS CORNER WAS SEARCHED WITHOUT SUCCESS. POSITION IS BASED ON PLAT DISTANCES AND THE SURVEY OF RECORD BY PLS 700 AND PLS 2393.

ADJUSTED TAX LOT 300 CONTAINS 11,690 Sq. Ft., ±

LINE NO.	BEARING	DISTANCE
L1	S 00°29'55" W	4.62
L2	N 00°29'55" E	6.20
L3	S 66°00'31" E	27.14

NARRATIVE:

THE PURPOSE OF THIS SURVEY IS TO ADJUST THE EXISTING LOT LINES OF LOTS 5, 6 AND 7 OF BLOCK 4 OF THE SUBDIVISION PLAT OF WINANS ADDITION TO THE CITY OF HOOD RIVER.

ORIGINAL BLOCK CORNERS FROM THE REPLAT OF WINANS ADDITION (C.S.#1181) WERE RECOVERED AS SHOWN, AS WERE MONUMENTS FROM C.S.#87030 AND C.S.#97054. ALL MONUMENTS FOUND OF RECORD WERE ACCEPTED MISSING CORNERS WERE THEN CALCULATED BY PROPORTIONING BETWEEN THE FOUND MONUMENTS TO REESTABLISH BLOCK 4. PORTIONS OF LOTS 3, 4, AND 5 WERE THEN ADJUSTED INTO NEW CONFIGURATIONS.

REFERENCES:

- HOOD RIVER COUNTY ASSESSORS MAP 3N 10 36AB, REVISED 10/23/02.
- C.S.#1181, HOOD RIVER COUNTY SURVEYORS OFFICE.
- C.S.#87030, HOOD RIVER COUNTY SURVEYORS OFFICE.
- C.S.#88011, HOOD RIVER COUNTY SURVEYORS OFFICE.
- C.S.#94137, HOOD RIVER COUNTY SURVEYORS OFFICE.
- C.S.#96054, HOOD RIVER COUNTY SURVEYORS OFFICE.
- C.S.#97054, HOOD RIVER COUNTY SURVEYORS OFFICE.
- C.S.#99095, HOOD RIVER COUNTY SURVEYORS OFFICE.
- C.S.#2002043, HOOD RIVER COUNTY SURVEYORS OFFICE.

LOCATION OF SURVEY:

PORTION OF LOTS 3, 4 AND 5 OF BLOCK 4 OF THE SUBDIVISION PLAT OF WINANS ADDITION TO THE CITY OF HOOD RIVER. LOCATED IN THE NORTHWEST QUARTER OF THE NORTHEAST QUARTER OF SECTION 36, TOWNSHIP 3 NORTH, RANGE 10 EAST, WILLAMETTE MERIDIAN, CITY OF HOOD RIVER, HOOD RIVER COUNTY, OREGON.

BASIS OF BEARING:

STATE PLANE COORDINATES, OREGON NORTH, NORTH AMERICAN DATUM OF 1983 (1998 ADJUSTMENT).

LEGEND:

- SET 5/8" X 30" IRON ROD WITH PLASTIC CAP
- ⊙ SET SURVEY NAIL - 3" LONG X 1" HEAD
- ⊗ SET SCREW IN CONCRETE
- FOUND MONUMENT OF RECORD
- CALCULATED, NOT FOUND OR SET
- () DEED OR PLAT CALL

REGISTERED PROFESSIONAL LAND SURVEYOR
Roy O. Gaylord
 OREGON
 JULY 13, 1979
 ROY O. GAYLORD
 1815

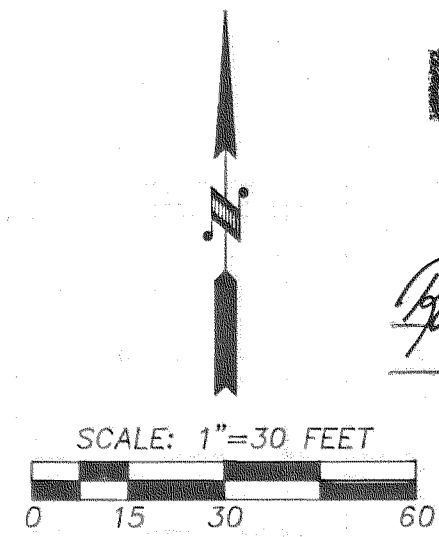
Expires: June, 2005

THIS CORNER WAS SEARCHED WITHOUT SUCCESS. POSITION IS BASED ON PLAT DISTANCES AND THE SURVEY OF RECORD BY PLS 700 AND PLS 2393.

EAST EUGENE STREET

BOUNDARY LINE ADJUSTMENT SURVEY
 for
 BILL JONES & TIMOTHY WILSON

TAX LOT	EXISTING SIZE	ADJUSTED PARCEL SIZE
TAX LOT 300	13,880 Sq. Ft.	11,690 Sq. Ft.
TAX LOT 701	5,000 Sq. Ft.	7,190 Sq. Ft.



FILED

AUG 2 2004
Royal White
 COUNTY CLERK

TERRA SURVEYING

DATE: JULY, 2004
 SCALE: 1" = 30'
 PROJECT: 204029ADJUST
 ASSESSORS MAP: 3N 10 36AB
 P.O. BOX 617
 HOOD RIVER, OREGON 97031
 PHONE & FAX: (541) 386-4531
 E-Mail: terra@gorge.net