

**MONUMENTATION SURVEY
HOOD RIVER HWY. 281 AT PACIFIC AVE.**

MILE POST 0.67 TO 1.17
LOCATED IN THE SE. 1/4, SEC. 35 AND
IN THE SW. 1/4, SEC. 36
T. 3 N., R. 10 E., WILLAMETTE MERIDIAN
JAMES M. BENSON D.L.C. 39
CITY OF HOOD RIVER
HOOD RIVER COUNTY, OREGON
MAY 4, 2004

NARRATIVE

PURPOSE

THE OREGON DEPARTMENT OF TRANSPORTATION (ODOT) HAS INITIATED THIS MONUMENTATION SURVEY TO SUPPORT A PROJECT IN WHICH RIGHT-OF-WAY (R/W) PROPERTY WAS ACQUIRED. THE PURPOSE OF THIS SURVEY IS TO REFERENCE ACQUIRED R/W WITH SET MONUMENTS. REFERENCES WERE SET AT NOTED CENTERLINE STATIONS AND OFFSETS ACCORDING TO HOOD RIVER COUNTY DEED DOCUMENTS 20032160, 20031900 AND 20031859. STATIONING IS FROM EXISTING HOOD RIVER HWY. 218 R/W CENTERLINE AS SHOWN ON HOOD RIVER COUNTY SURVEY NUMBER (SN) 2003-013. IN ADDITION, POINTS WERE CALCULATED AT THE INTERSECTIONS OF THE ACQUIRED R/W LINES AND THE EXISTING R/W LINES FOR HOOD RIVER HWY. 218 AND PACIFIC AVE. THE EXISTING R/W LINES ARE AS SHOWN ON SN 2003-013. THE LOCATIONS OF THE FOUND MONUMENTS WERE PREVIOUSLY NOTED IN SN 2003-013. THIS SURVEY MEETS THE REQUIREMENTS OF ORS 209.155.

KEY NO.: 11915
PROJECT NAME: HOOD RIVER HWY. 281 AT PACIFIC AVE.
CONTRACT NO.: CON02174
CONSTRUCTION PLANS: 36V-028

BASIS OF BEARING, COORDINATES

BASIS OF BEARING AND COORDINATES FOR THIS SURVEY WERE ESTABLISHED IN SN 2003-013. MONUMENTS ESTABLISHED IN THIS SURVEY WERE RADIALY SET FROM CONTROL STATIONS ESTABLISHED IN SN 2003-013.

ALIGNMENT DESCRIPTION

RESOLUTION OF THE R/W CENTERLINE ALIGNMENTS FOR HOOD RIVER HWY. AND FOR PACIFIC AVE. WERE TAKEN FROM SN 2003-013.

R/W LINES

R/W LINES FOR HOOD RIVER HWY. ARE AS SHOWN ON ODOT MAP 8B-36-13. R/W LINES FOR PACIFIC AVE. ARE AS DESCRIBED IN HOOD RIVER COUNTY DEED DOCUMENTS 731329, 731330 AND 731331.

REFERENCE DOCUMENTS

SN 2003-013 (ODOT)
DEED DOCUMENTS 20032160 731329
20031900 731330
20031859 731331
ODOT R/W MAP 8B-36-13

INDEX

SHEET 1- NARRATIVE, QUALITY CONTROL
SHEET 2- MONUMENTATION SURVEY SHEETS

PROJECT TEAM

FIELD LEADER : B. GIGSTAD
DRAWN BY : T. HALE
CALCULATED BY : T. HALE
PROJECT SURVEYOR: F. OBJIJOFOR
STANDARDS : B. TANDY
SENIOR SURVEYOR : R. HAMILTON
SURVEY MANAGER : B. TANDY

SPECIAL NOTES

THIS SURVEY WAS PERFORMED USING METRIC MEASURE. TO CONVERT FROM METRIC TO INTERNATIONAL FEET, DIVIDE BY THE FOLLOWING CONVERSION FACTORS:

25.40 MILLIMETERS (mm)/INCH
0.3048 METERS (m)/FOOT

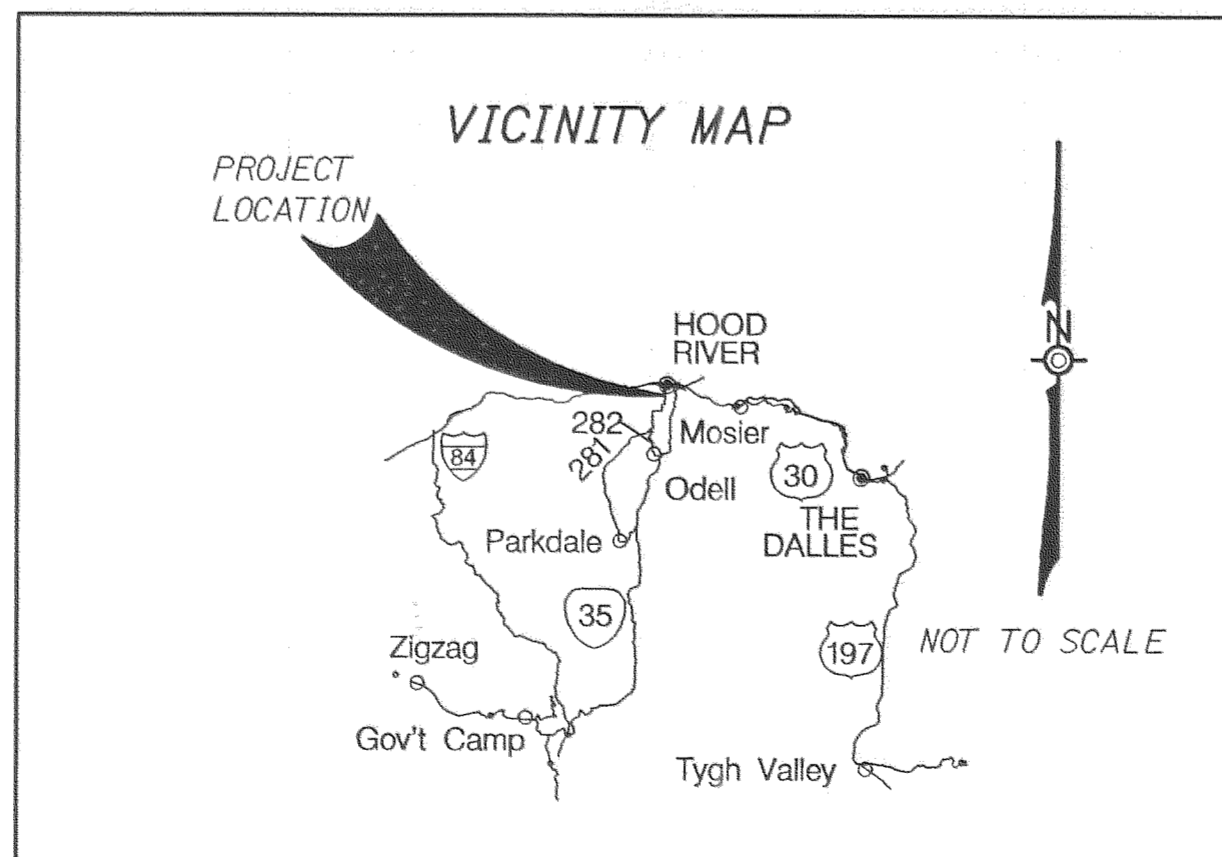
ALL DIMENSIONS ARE IN METERS UNLESS NOTED OTHERWISE.

INSTRUMENT USED:

LEICA TCA 1800 TOTAL STATION (SER. *419153)

A COPY OF THE ORIGINAL FIELD NOTES IS ON FILE AT THE ADDRESS BELOW.

THIS SURVEY WAS PREPARED USING HEWLETT-PACKARD PRODUCT NO. 51645A ON CONTINENTAL JPC4M2 POLYESTER FILM.



FILED

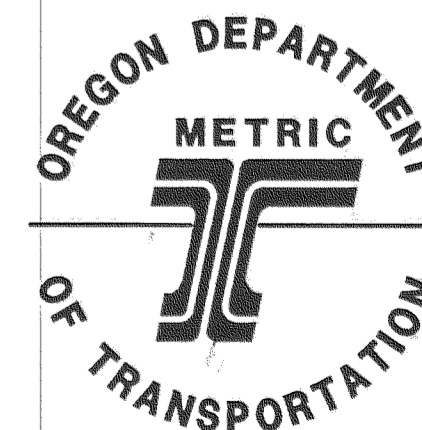
JUN 23 2004

Brian P. Tandy
COUNTY CLERK
DEPUTY

REGISTERED
PROFESSIONAL
LAND SURVEYOR

Brian P. Tandy

OREGON
JULY 17, 1986
BRIAN P. TANDY
2222



REGION 1, SURVEY GROUP
123 NW FLANDERS STREET
PORTLAND, OR 97209-4012
(503) 731-3240

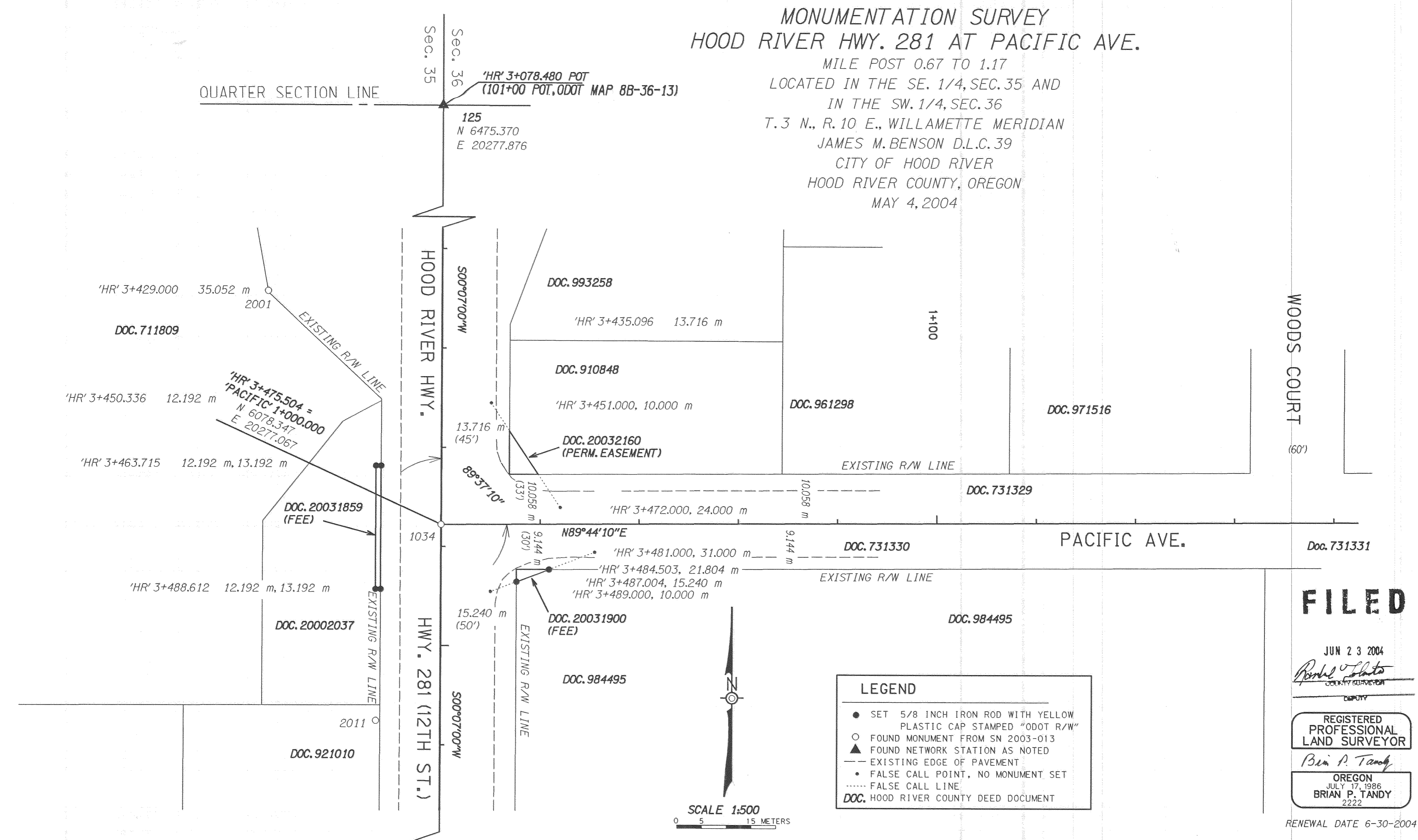
RENEWAL DATE 6-30-2004

SHEET 1 OF 2

CS 2004 028

MONUMENTATION SURVEY HOOD RIVER HWY. 281 AT PACIFIC AVE.

MILE POST 0.67 TO 1.17
LOCATED IN THE SE. 1/4, SEC. 35 AND
IN THE SW. 1/4, SEC. 36
T. 3 N., R. 10 E., WILLAMETTE MERIDIAN
JAMES M. BENSON D.L.C. 39
CITY OF HOOD RIVER
HOOD RIVER COUNTY, OREGON
MAY 4, 2004



REFERENCE POINTS OF AQUIRED R/W LINES

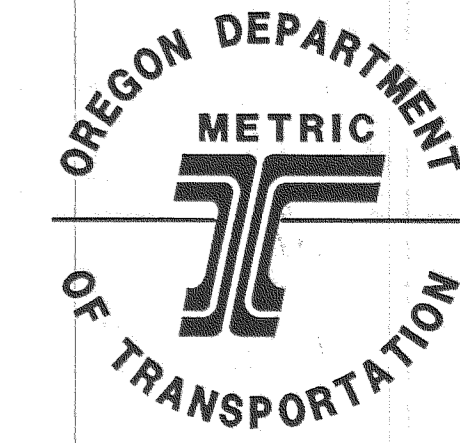
STATION	OFFSET	NORTHING	EASTING
3+451.000	-10.000	6102.831	20287.117
3+472.000	-24.000	6081.802	20301.074
3+481.000	-31.000	6072.788	20308.056
3+484.503	-21.804	6069.304	20298.853
3+487.004	-15.240	6066.816	20292.284
3+489.000	-10.000	6064.831	20287.040
3+463.715	13.192	6090.163	20263.899
3+463.715	12.192	6090.161	20264.899
3+488.612	13.192	6065.266	20263.849
3+488.612	12.192	6065.264	20264.849

MONUMENTS PREVIOUSLY FOUND IN SURVEY 2003-013

POINT ID	NORTHING	EASTING	DESCRIPTION
47	5676.922	20276.250	FOUND NAIL WITH PUNCH MARK IN A.C., CORNER CARD 621, HOOD RIVER COUNTY SURVEY RECORDS. REPLACED WITH 5/8" IRON ROD WITH 1 1/2" BRASS CAP STAMPED "ODOT 35 36 + 1 2 2002" IN SN 2003-013.
125	6475.370	20277.876	FOUND 5/8" REBAR IN MONUMENT BOX, LID MARKED "WATER". CORNER CARD 620 HOOD RIVER COUNTY SURVEY RECORDS.
1034	6078.347	20277.043	FOUND RAILROAD SPIKE IN A.C. (PS 7324)
2001	6125.354	20242.054	FOUND 5/8 INCH IRON ROD, UP 0.17 m WITH POST AND SIGN MARKED "SHRW POT 112+50.00 115", (ODOT MAP 8B-36-13)
2011	6038.758	20263.975	FOUND P-K NAIL IN A.C. (PS 98059)

FILED
JUN 23 2004
Brian P. Tandy
DEPUTY
REGISTERED PROFESSIONAL LAND SURVEYOR
Brian P. Tandy
OREGON
JULY 17, 1986
BRIAN P. TANDY
2222

RENEWAL DATE 6-30-2004



REGION 1, SURVEY GROUP
123 NW FLANDERS STREET
PORTLAND, OR 97209-4012
(503) 731-3240