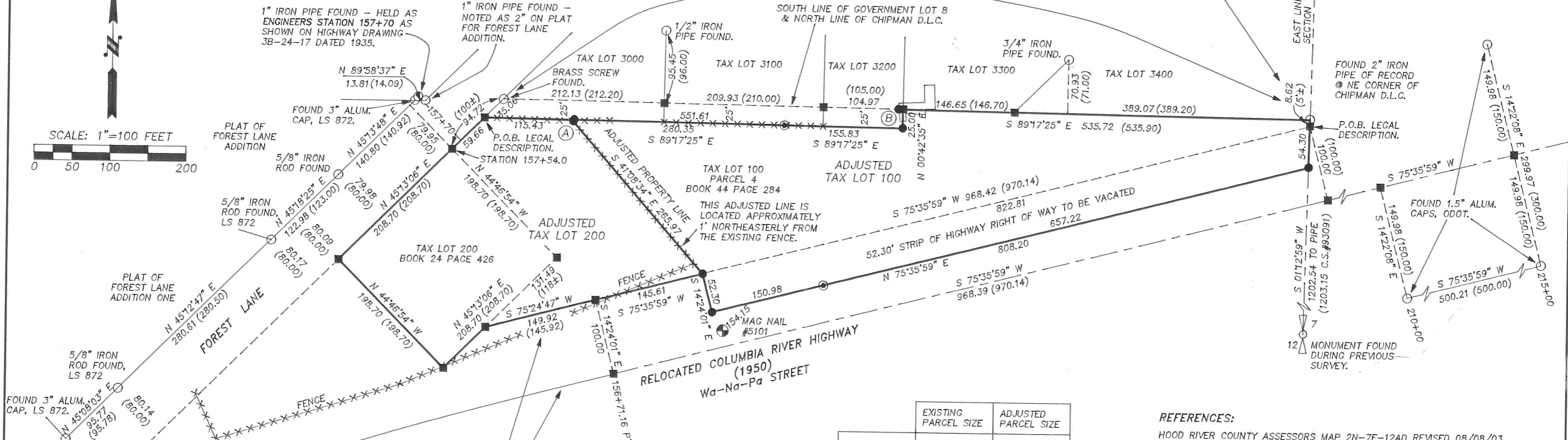


ACCEPTED THE FACT THAT THE CHIPMAN DLC PIPE CREATED AN ANGLE POINT IN THE NORTH - SOUTH TOWNSHIP SECTION LINE. THE DECISION SUPPORTS PRIOR SURVEYS AND DEED DESCRIPTIONS WHICH USE THE COMBINATION OF BOTH THE DLC AND SECTION LINE.



NOTE: THIS PORTION OF THE HIGHWAY CENTERLINE IS DESCRIBED AS A 2 DEGREE SPIRAL CURVE. WE OFFSET THE SPIRAL 100' LEFT TO DETERMINE THE RIGHT OF WAY. I THEN REPRESENTED A CHORD OF THE OFFSET BY SHOWING THE CHORD BEARING AND DISTANCE TO ESTABLISH AN ADJUSTED PROPERTY LINE WHICH CAN BE SURVEYED UPON THE GROUND.

	EXISTING PARCEL SIZE	ADJUSTED PARCEL SIZE
TAX LOT 100	3.37 ACRES	3.34 ACRES
TAX LOT 200	0.95 ACRES	1.96 ACRES

NOTE: THE NEW ACREAGE FOR TAX LOT 100 INCLUDES 0.98 ACRES TO BE VACATED FROM THE RELOCATED COLUMBIA RIVER HIGHWAY (1950).

REFERENCES:

- HOOD RIVER COUNTY ASSESSORS MAP 2N-7E-12AD REVISED 08/08/03.
- HOOD RIVER COUNTY ASSESSORS MAP 2N-7E-12AA REVISED 08/08/03.
- HOOD RIVER COUNTY DEED BOOK 24, PAGE 284.
- HOOD RIVER COUNTY DEED BOOK 44, PAGE 284.
- HOOD RIVER COUNTY DEED MICROFILM #691480.
- HOOD RIVER COUNTY DEED MICROFILM #691481.
- HOOD RIVER COUNTY DEED MICROFILM #701323.
- HOOD RIVER COUNTY DEED MICROFILM #922837.
- HOOD RIVER COUNTY SURVEYORS OFFICE C.S.#2002072.
- HOOD RIVER COUNTY SURVEYORS OFFICE C.S.#96045.
- HOOD RIVER COUNTY SURVEYORS OFFICE C.S.#92098.
- HOOD RIVER COUNTY SURVEYORS OFFICE C.S.#94004.
- HOOD RIVER COUNTY SURVEYORS OFFICE C.S.#93091.
- HOOD RIVER COUNTY SURVEYORS OFFICE C.S.#878.
- HOOD RIVER COUNTY SURVEYORS OFFICE C.S.#876.
- HOOD RIVER COUNTY SURVEYORS OFFICE C.S.#871.
- HIGHWAY MAP 3B-24-17.
- HIGHWAY MAP 6B-35-5.
- HIGHWAY MAP 8B-7-6.

BASIS OF BEARING:

NORTH AMERICAN DATUM OF 1983 (1998 ADJUSTMENT), GRID BEARINGS.

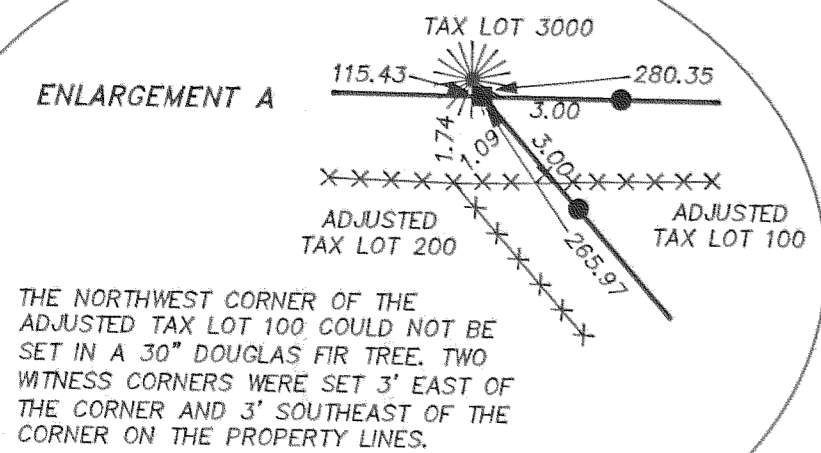
VERTICAL DATUM:

G.P.S. OBSERVATIONS FROM NAD83 MONUMENT NEAR GOVERNMENT ROCK.

LOCATION OF SURVEY:

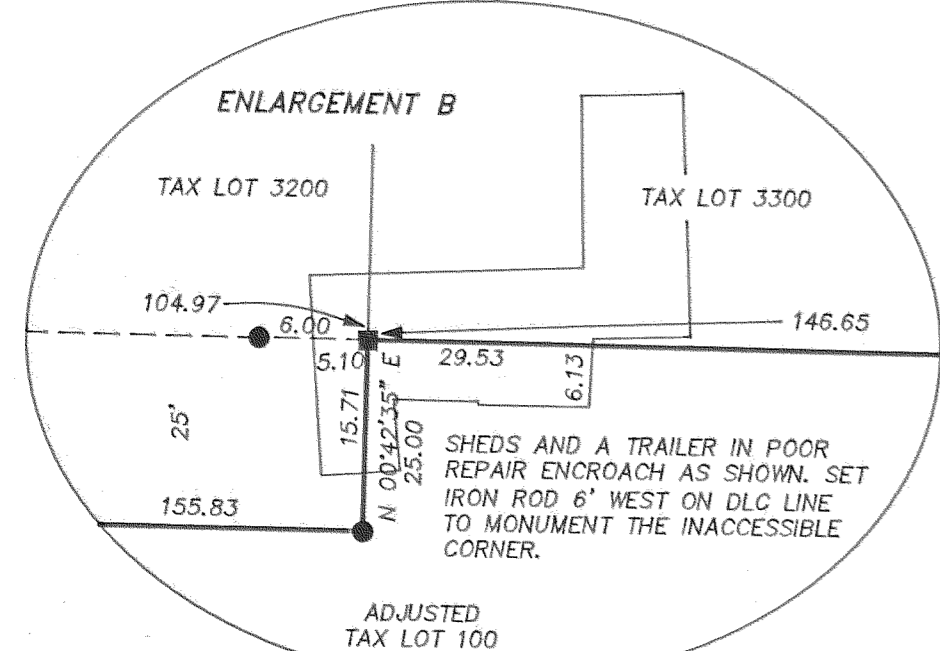
PORTION OF THE THE SOUTH HALF OF THE NORTHEAST QUARTER OF SECTION 12, TOWNSHIP 2 NORTH, RANGE 7 EAST, WILLAMETTE MERIDIAN, CITY OF CASCADE LOCKS, HOOD RIVER COUNTY, OREGON.

ENLARGEMENT A



THE NORTHWEST CORNER OF THE ADJUSTED TAX LOT 100 COULD NOT BE SET IN A 30° SPIRAL CURVE. TWO WITNESS CORNERS WERE SET 3' EAST OF THE CORNER AND 3' SOUTHEAST OF THE CORNER ON THE PROPERTY LINES.

ENLARGEMENT B



ADJUSTED TAX LOT 100

NARRATIVE:

THE PURPOSE OF THIS SURVEY IS TO ADJUST THE PROPERTY BOUNDARY BETWEEN TAX LOTS 100 & 200 OF HOOD RIVER COUNTY ASSESSORS MAP 2N-7E-21AD. TAX LOT 100 IS DESCRIBED BY HOOD RIVER COUNTY DEED BOOK 44, PAGE 284, & HOOD RIVER COUNTY DEED MICROFILM No.'s 691480, 691481 & 922837. TAX LOT 200 IS DESCRIBED BY HOOD RIVER COUNTY DEED BOOK 24, PAGE 426. A 52.30 FOOT STRIP OF THE HISTORIC COLUMBIA RIVER HIGHWAY IS ALSO TO BE VACATED AND IS MONUMENTED BY THIS SURVEY.

HELD THE ALUMINUM CAP FOUND AT THE SOUTH CORNER OF THE PLAT OF FOREST LANE ADDITION ONE (C.S.#94004) AND THE RIGHT OF WAY WIDTH OF 80 FEET. HELD THE BRASS SCREW FOUND ON THE NORTH LINE OF THE CHIPMAN D.L.C. AS SHOWN ON C.S.#93091 AS BEING ON THE SOUTHERLY RIGHT OF WAY OF FOREST LANE. THIS ESTABLISHED THE SOUTHERLY RIGHT OF WAY OF FOREST LANE.

HELD THE ONE INCH IRON PIPE FOUND NEAR THE NORTH CORNER OF THE PLAT OF FOREST LANE ADDITION ONE AS ENGINEERS STATION 157+70 AS SHOWN ON HIGHWAY DRAWING 3B-24-17 DATED 1935, DERIVED ENGINEERS STATION 157.54 FROM THIS AND POSITIONED TAX LOT 200 AS PER DEED. (THE RIGHT OF WAY FOR FOREST LANE HAS BEEN WIDENED BY 10 FEET SINCE THE DEED FOR TAX LOT 200 WAS WRITTEN.)

HELD THE 2" IRON PIPE FOUND ON THE EAST LINE OF SECTION 12 AND AT THE NORTHEAST CORNER OF THE CHIPMAN D.L.C. THIS MONUMENT AND THE BRASS SCREW MENTIONED PREVIOUSLY ESTABLISHED THE NORTH LINE OF THE CHIPMAN D.L.C. I THEN PROPORTIONED THE DEED DISTANCES FOR TAX LOTS 3000, 3100, 3200, 3300 & 3400 AND ESTABLISHED THE NORTH LINE OF TAX LOT 100 AS PER DEEDS.

THE EAST LINE OF SECTION 12 WAS ESTABLISHED BY HOLDING THE 2" IRON PIPE FOUND AT THE D.L.C. CORNER AND THE EAST QUARTER CORNER OF SECTION 12 FOUND DURING PREVIOUS SURVEYS IN THE AREA, THIS ESTABLISHED THE EAST LINE OF TAX LOT 100.

THE RIGHT OF WAY FOR THE HISTORIC COLUMBIA RIVER HIGHWAY WAS ESTABLISHED FROM HIGHWAY MONUMENTS FOUND TO THE EAST OF THE PROJECT AS SHOWN.

THE ADJUSTED LINE WAS THEN MONUMENTED AND ADDITIONAL MONUMENTS WERE SET AS SHOWN TO FACILITATE A FUTURE PARTITION.

THERE IS AN ENCROACHMENT AS SHOWN BY ENLARGEMENT B.

THE FENCE LINE TO THE SOUTH OF TAX LOT 3100 IS ON THE PROPERTY LINE.

A BENCHMARK WAS ESTABLISHED. MAG NAIL #5101 IS SET IN THE NORTHERLY EDGE OF WA-NA-PA STREET 2.3 FEET SOUTHERLY FROM THE EDGE OF PAVEMENT AND 73.3 FEET EASTERLY FROM A "SPEED ZONE AHEAD" SIGN. THE ELEVATIONS WERE DERIVED FROM G.P.S. OBSERVATIONS FROM A U.S.D.A. FOREST SERVICE ALUMINUM CAP MONUMENT STAMPED T.B.M. N.A.D.83 83.86' FOUND IN THE EAST EDGE OF THE CAUSEWAY TO GOVERNMENT ROCK TO THE EAST OF THE PROJECT.

**PROPERTY BOUNDARY LINE ADJUSTMENT
for
HOOD RIVER COUNTY**

FILED

APR 27 2004
Ronald Photo 138.40

REGISTERED PROFESSIONAL LAND SURVEYOR
Roy O. Gaylord
OREGON
JULY 13, 1979
ROY O. GAYLORD
1815
Expires: June, 2005

LEGEND:

- SET 5/8" X 30" IRON ROD WITH PLASTIC CAP
- FOUND MONUMENT OF RECORD
- ⊙ MONUMENT SET FOR FUTURE PARTITION
- CALCULATED, NOT FOUND OR SET
- ⊕ BENCH MARK WITH ELEVATION
- () DEED OR PLAT CALL
- - - - - FENCE LINE

TERRA SURVEYING

DATE: MARCH, 2004
SCALE: 1" = 100'
PROJECT: 204002
ASSESSORS MAP: 02N 07E 12AD
P.O. BOX 617
HOOD RIVER, OREGON 97031
PHONE & FAX: (541) 386-4531
E-Mail: terra@gorge.net

Acres 4-15-04 0715

CS 2004 019