

**PARTITION PLAT IN  
LOTS 1 AND 2 SUNNYSIDE  
NW 1/4, NW 1/4, SECTION 2, T 2 N, R 10 E, W.M.  
HOOD RIVER COUNTY, STATE OF OREGON**

**NARRATIVE**  
THE PURPOSE OF THIS SURVEY WAS TO PARTITION PARCEL 3 OF PARTITION PLAT 2003-22P INTO 2 PARCELS. ALL MONUMENTS WERE SET DURING THE SURVEY OF THE ABOVE STATED PARTITION.

**REFERENCE SURVEYS**  
PARTITION PLAT 2003-22P



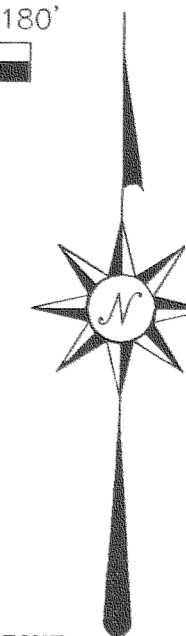
SCALE 1" = 60 FEET

BASIS OF BEARING - NAD 83  
BETWEEN KA CONTROL AND THE  
NW CORNER OF SECTION 2

**LEGEND**

- = SET 5/8" IR WITH PLASTIC CAP MARKED OR #932 & WA #22098 AS PER PARTITION PLAT 2003-22P
- ⊗ = FOUND MONUMENT AS NOTED
- ⊠ = CALCULATED CORNER AS NOTED

N: 740444.60  
E: 7935922.87 = COORDINATES ARE OREGON NORTH ZONE NAD 83



FILED  
RECORDS & ASSESSMENT  
HOOD RIVER CO.  
Feb 25 9 00 AM '04

PARTITION PLAT NO. 200401 P  
Instrument received on the 25<sup>th</sup> day of February, 2004 at 9:00 A.M.  
*Cindy Julech* - Deputy Clerk  
Hood River County Director of Records and Assessments

**SURVEYS CERTIFICATE**  
I, Anthony C. Klein, being first duly sworn, depose and say that I have correctly surveyed and marked with proper monuments the lands represented on this Partition Plat, the boundaries being described in Book 75, Page 390 dated March 18, 1964, Hood River County Records, to Hood River Valley Christian Church, an Oregon corporation

*Anthony C. Klein*  
ANTHONY C. KLEIN PLS 932

**ACKNOWLEDGEMENTS**  
I/We the owners of the land shown herein, hereby declare that this division of land has been made with our free consent and in accordance with our desires and hereby dedicate to the Public the Roads and Streets as shown on this Plat for roads and utilities.

*Dorothy M. Swyers*  
Dorothy M. Swyers Trustee

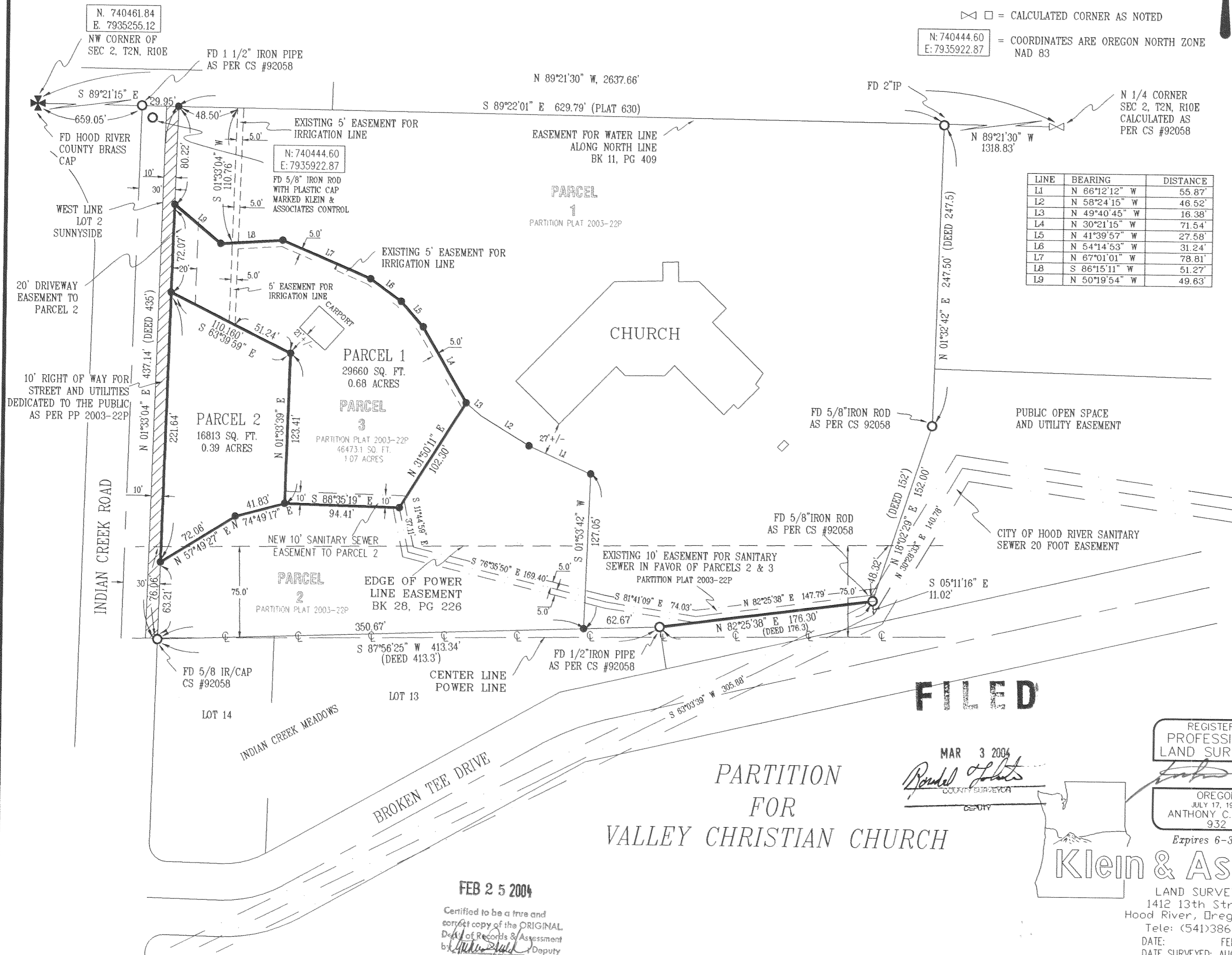
STATE OF OREGON }  
COUNTY OF Hood River }<sup>SS</sup>  
This instrument was acknowledged before me on 24<sup>th</sup> day of February, 2004 by Dorothy M. Swyers, as Trustee for Hood River Valley Christian Church

*Rachael Fox*  
Notary Public for the State of Oregon  
My commission expires Aug 10, 2004  
My commission No. A337383

**APPROVALS**  
I hereby certify that all taxes and assessment due hereon have been fully paid as required by law as of this 25<sup>th</sup> day of February, 2004  
*Paula A. Brown*  
Hood River County Director of Budget and Finance.

I hereby certify this partition was examined and approved as of this 24<sup>th</sup> day of FEBRUARY, 2004  
*Wendell Lobnitz*  
Hood River County Surveyor

I hereby certify this partition was examined and approved as of this 25<sup>th</sup> day of FEBRUARY, 2004  
*M. Benedict*  
Hood River County Planning Director



**FILED**

MAR 3 2004  
*Rachael Fox*  
COUNTY CLERK

REGISTERED  
PROFESSIONAL  
LAND SURVEYOR

OREGON  
JULY 17, 1970  
ANTHONY C. KLEIN  
932  
Expires 6-30-05

**Klein & Assoc.**

LAND SURVEYING  
1412 13th Street  
Hood River, Oregon 97031  
Tel: (541)386-3322  
DATE: FEB 2004  
DATE SURVEYED: AUG. 2003  
JOB NO.: 03039

PARTITION  
FOR  
VALLEY CHRISTIAN CHURCH

FEB 25 2004  
Certified to be a true and correct copy of the ORIGINAL Deed of Records & Assessment by *Anthony C. Klein* Deputy

02N 10E 02BB T.L.101

CS 2004 008