

**POST-CONSTRUCTION RIGHT OF WAY MONUMENTATION SURVEY (NETWORK)**  
**HOOD RIVER CANYON ROCKFALL HWY. 35 (MP 72)**  
 M.P. #72.66 TO M.P. #73.36 ON HWY. #35 (STATE ROUTE #26)  
 E. 1/2 SEC. 8, N.E. 1/4 SEC. 17, T. 2 S., R. 10 E., WILLAMETTE MERIDIAN  
 HOOD RIVER COUNTY, OREGON  
 NOVEMBER 12, 2003

**NARRATIVE**

**PURPOSE**

THIS IS A MONUMENTATION SURVEY TO SHOW THE HORIZONTAL CONTROL NETWORK AND ITS RELATIONSHIP TO THE NEW RIGHT OF WAY AND CONTROLLING CENTERLINE FOR AN OREGON DEPARTMENT OF TRANSPORTATION (ODOT) PROJECT. THIS SURVEY MEETS THE REQUIREMENTS OF ORS 209J55(2b).

KEY NO.: 09388  
 PROJECT NAME: HOOD RIVER CANYON ROCKFALL  
 CONTRACT NO.: 12800  
 CONTRACT DATE: DECEMBER 12, 2002  
 CONSTRUCTION PLANS: 35V-124

**BASIS OF BEARING AND COORDINATES**

HELD THE BEARING OF S 5°33'29"E BETWEEN FOUND GPS STATIONS "ROOK" AND "SHER" PER SN 2001047.

HORIZONTAL CONTROL FOR THIS SURVEY WAS ESTABLISHED BY HOLDING THE NAD 83/91 STATE PLANE (SP) COORDINATES OF NETWORK CONTROL STATIONS "ROOK" AND "SHER" (SN 2001047). THE STATE PLANE COORDINATES WERE DIVIDED BY 0.99976222 TO REDUCE THEM TO A LOCAL DATUM PLANE (LDP).

**NEW RIGHT OF WAY AND CONTROLLING CENTERLINE**

THE NEW RIGHT OF WAY AND CONTROLLING CENTERLINE WERE ESTABLISHED BY HOLDING CALLS SHOWN ON ODOT RIGHT OF WAY MAP 10B-16-21.

**REFERENCE DOCUMENTS**

CORNER NO. 152  
 SN 2001047  
 ODOT RIGHT OF WAY MAP 10B-16-21 (MARCH 2002)

**INDEX**

SHEET 1 - NARRATIVE, QUALITY CONTROL  
 SHEETS 2 & 3 - PROJECT CONTROL SHEETS  
 SHEETS 4 & 5 - PROJECT MONUMENTATION SHEETS

**PROJECT TEAM**

FIELD LEADER : J. BERSCHIED  
 DRAWN BY : S. MUMA  
 CALCULATED BY : S. MUMA  
 PROJECT SURVEYOR: F. OBIJIOFOR  
 STANDARDS : T. TAYLOR  
 SENIOR SURVEYOR : R. GALLES  
 SURVEY MANAGER : B. TANDY

**SPECIAL NOTES**

THIS SURVEY WAS PERFORMED USING METRIC MEASURE. TO CONVERT FROM METRIC TO INTERNATIONAL FEET, DIVIDE BY THE FOLLOWING CONVERSION FACTORS:

25.40 MILLIMETERS (mm)/INCH  
 0.3048 METERS (m)/FOOT

ALL DIMENSIONS ARE IN METERS UNLESS NOTED OTHERWISE.

WHEN CONVERTING FROM METRIC TO INTERNATIONAL FEET, ALL R/W WIDTHS SHOULD BE ROUNDED TO THE NEAREST FOOT.

THIS SURVEY WAS PREPARED USING HEWLETT-PACKARD PRODUCT NO. 51645A ON CONTINENTAL JPC4M2 POLYESTER FILM.

**QUALITY CONTROL**

HORIZONTAL CONTROL WAS ESTABLISHED BY EXECUTING A NETWORK USING FORCED CENTERING METHODS. TWO SETS OF HORIZONTAL ANGLES WERE TURNED AT EACH STATION. THE LENGTH OF EACH LEG OF THE NETWORK WAS DETERMINED BY MEASURING TWO SETS OF SLOPE DISTANCES AND TURNING TWO SETS OF ZENITH (VERTICAL) ANGLES BOTH IN THE AHEAD AND BACK DIRECTION. THE MEAN VALUES OF THE HORIZONTAL ANGLES AND DISTANCES WERE RECORDED AND USED FOR NETWORK COMPUTATIONS.

THE NETWORK WAS ADJUSTED USING THE LEAST SQUARES METHOD. SEE SHEET 2 FOR THE RESULTS OF THE NETWORK COMPUTATIONS.

**INSTRUMENT USED:**

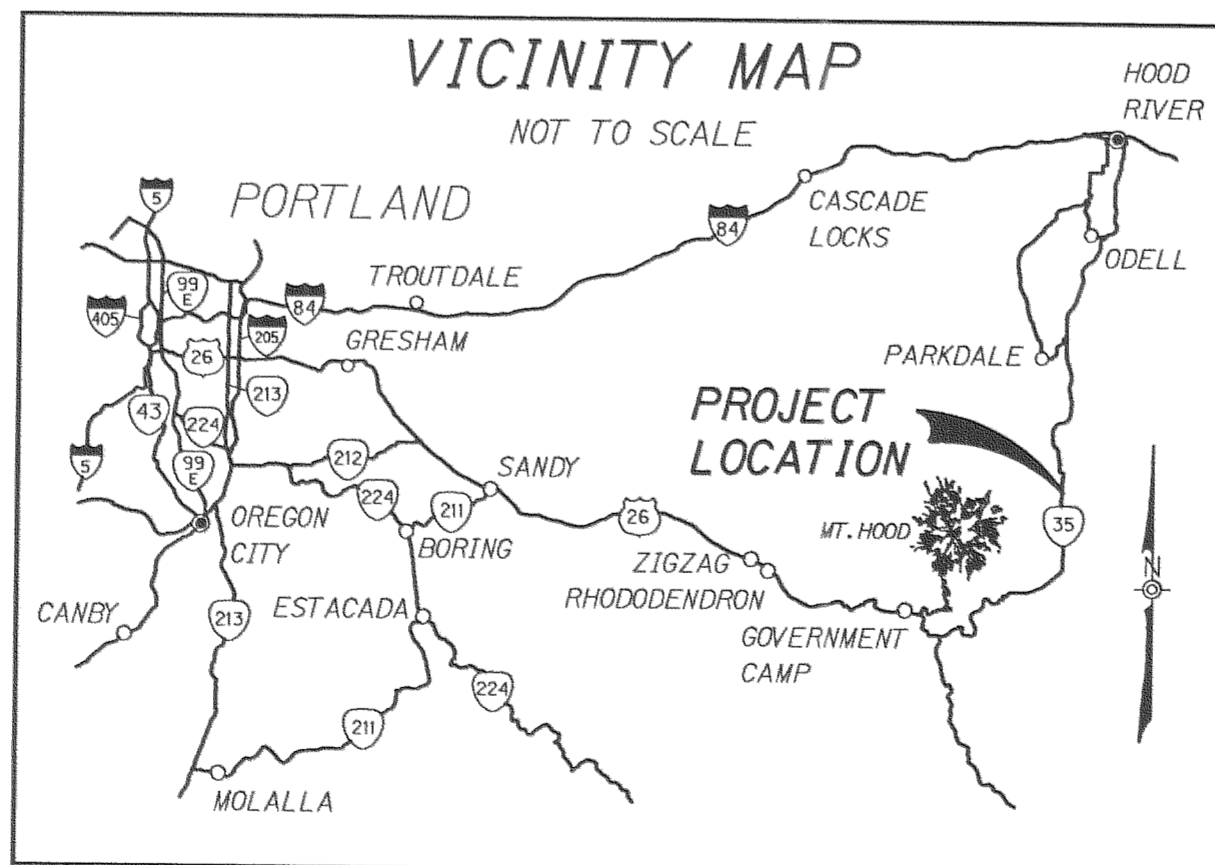
LEICA TCA 1800 TOTAL STATION (SER. \*416520)

THE TOTAL STATION WAS CHECKED FOR CALIBRATION AND COLLIMATION PRIOR TO EXECUTING THE NETWORK. BASELINE RECORDS AND DETAILS REGARDING NETWORK PROCEDURES ARE ON FILE AT THE ADDRESS BELOW.

A SEARCH FOR SURVEY MONUMENTS WAS MADE WITHIN THE PROJECT LIMITS. THE HORIZONTAL POSITIONS OF THE FOUND MONUMENTS WERE ESTABLISHED BY TYING THE MONUMENTS FROM THE HORIZONTAL CONTROL. TWO INDEPENDENT MEASUREMENTS WERE MADE TO THE MONUMENTS. THE EXTRA MEASUREMENTS WERE PERFORMED TO INCREASE THE CONFIDENCE AND CREDIBILITY OF PRESERVING THE MONUMENT LOCATIONS.

ALL PIPE SIZES ARE INSIDE DIAMETER.

A COPY OF THE ORIGINAL FIELD NOTES IS ON FILE AT THE ADDRESS BELOW.



**FILED**

FEB 12 2004

*Russell J. [Signature]*  
 DEPUTY

REGISTERED PROFESSIONAL LAND SURVEYOR

*Brian P. Tandy*  
 OREGON  
 JULY 17, 1986  
 BRIAN P. TANDY  
 2222

RENEWAL DATE 6-30-2004



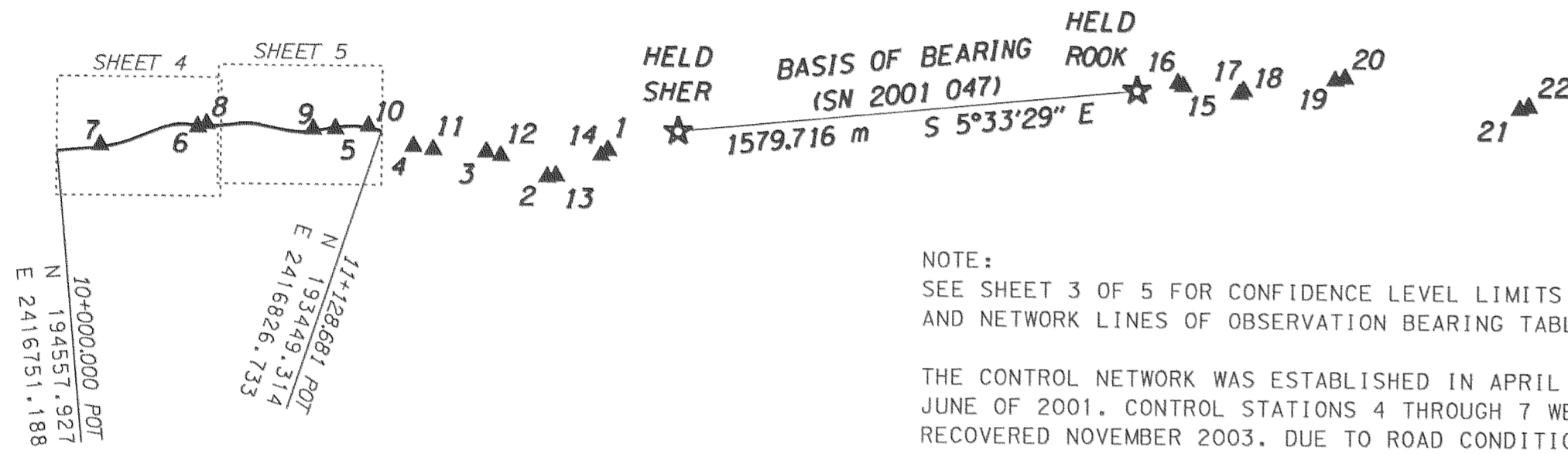
GEOMETRONICS  
 REGION 1, SURVEY GROUP  
 123 NW FLANDERS STREET  
 PORTLAND, OR 97209-4012  
 (503) 731-3240

SHEET 1 OF 5

*Revised 1-21-04 1000*

*CS 2004 002 (5)*

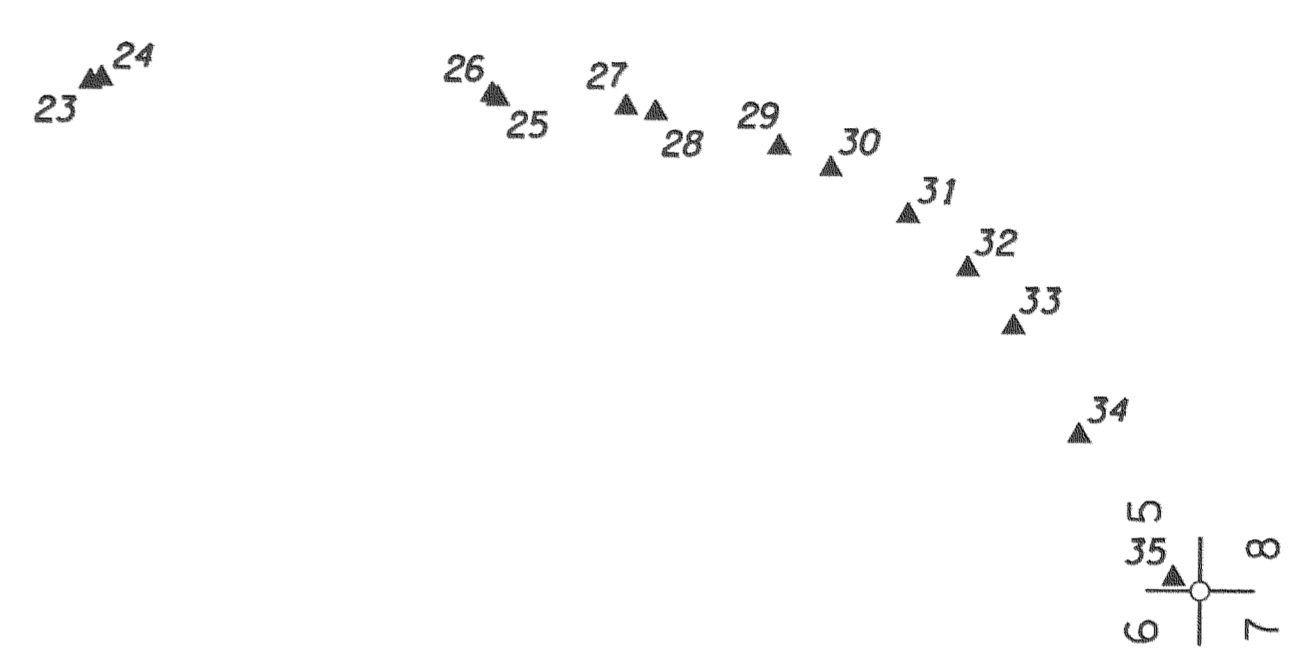
**POST-CONSTRUCTION RIGHT OF WAY MONUMENTATION SURVEY (NETWORK)**  
**HOOD RIVER CANYON ROCKFALL HWY. 35 (MP 72)**  
M.P. #72.66 TO M.P. #73.36 ON HWY. #35 (STATE ROUTE #26)  
E. 1/2 SEC. 8, N.E. 1/4 SEC. 17, T. 2 S., R. 10 E., WILLAMETTE MERIDIAN  
HOOD RIVER COUNTY, OREGON  
NOVEMBER 12, 2003



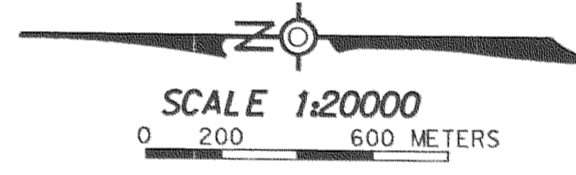
NOTE:  
SEE SHEET 3 OF 5 FOR CONFIDENCE LEVEL LIMITS  
AND NETWORK LINES OF OBSERVATION BEARING TABLES.

THE CONTROL NETWORK WAS ESTABLISHED IN APRIL AND  
JUNE OF 2001. CONTROL STATIONS 4 THROUGH 7 WERE  
RECOVERED NOVEMBER 2003. DUE TO ROAD CONDITIONS  
CONTROL STATIONS 8 THROUGH 10 WERE NOT RECOVERED.  
THEY MAY OR MAY NOT HAVE BEEN DESTROYED DURING  
CONSTRUCTION.

NO FIELD WORK WAS PERFORMED FOR THIS SURVEY. DATA  
FROM THE 2001 ODOT LOCATION PROJECT WAS USED.



1000  
2-1/2" BRASS DISK ON A  
2" IRON PIPE, UP 0.30 m  
(CORNER NO. 152)  
N 185471.959  
E 2415576.613  
(SEE SHEET 4 OF 5)



COORDINATES SHOWN ON THIS SURVEY  
ARE LDP CONVERTED FROM NAD83(91)

**PROJECT NETWORK CONTROL TABLE**

PT.	NORTHING	EASTING	DESCRIPTION
1	192672.827	2416769.232	SET 5/8" X 30" IRON ROD WITH 1-1/2" BRASS CAP STAMPED "ODOT CONTROL 1"
2	192879.652	2416676.106	SET 5/8" X 30" IRON ROD WITH 1-1/2" BRASS CAP STAMPED "ODOT CONTROL 2"
3	193089.939	2416759.054	SET 5/8" X 30" IRON ROD WITH 1-1/2" BRASS CAP STAMPED "ODOT CONTROL 3"
4	193339.272	2416775.021	SET 5/8" X 30" IRON ROD WITH 1-1/2" BRASS CAP STAMPED "ODOT CONTROL 4"
5	193607.272	2416833.190	SET 5/8" X 30" IRON ROD WITH 1-1/2" BRASS CAP STAMPED "ODOT CONTROL 5"
6	194077.474	2416835.822	SET 5/8" X 30" IRON ROD WITH 1-1/2" BRASS CAP STAMPED "ODOT CONTROL 6"
7	194409.445	2416770.178	SET 1.17" BRASS PLUG IN CONCRETE WALK ON EAST SIDE OF BRIDGE OVER EAST FORK HOOD R.
8	194047.579	2416846.268	SET MAG NAIL WITH 1-1/4" BRASS WASHER STAMPED "ODOT CONTROL 8"
9	193683.859	2416831.490	SET MAG NAIL WITH 1-1/4" BRASS WASHER STAMPED "ODOT CONTROL 9"
10	193493.455	2416843.241	SET MAG NAIL WITH 1-1/4" BRASS WASHER STAMPED "ODOT CONTROL 10"
11	193272.070	2416765.262	SET MAG NAIL WITH 1-1/4" BRASS WASHER STAMPED "ODOT CONTROL 11"
12	193040.007	2416746.105	SET MAG NAIL WITH 1-1/4" BRASS WASHER STAMPED "ODOT CONTROL 12"
13	192849.801	2416679.610	SET MAG NAIL WITH 1-1/4" BRASS WASHER STAMPED "ODOT CONTROL 13"
14	192696.269	2416750.912	SET MAG NAIL WITH 1-1/4" BRASS WASHER STAMPED "ODOT CONTROL 14"
15	190703.525	2417006.601	SET MAG NAIL WITH 1-1/4" BRASS WASHER STAMPED "ODOT CONTROL 15"
16	190721.760	2417016.626	SET MAG NAIL WITH 1-1/4" BRASS WASHER STAMPED "ODOT CONTROL 16"
17	190509.343	2416982.771	SET MAG NAIL WITH 1-1/4" BRASS WASHER STAMPED "ODOT CONTROL 17"
18	190495.385	2416992.108	SET MAG NAIL WITH 1-1/4" BRASS WASHER STAMPED "ODOT CONTROL 18"
19	190180.916	2417030.689	SET MAG NAIL WITH 1-1/4" BRASS WASHER STAMPED "ODOT CONTROL 19"
20	190148.234	2417038.258	SET MAG NAIL WITH 1-1/4" BRASS WASHER STAMPED "ODOT CONTROL 20"
21	189546.062	2416937.033	SET MAG NAIL WITH 1-1/4" BRASS WASHER STAMPED "ODOT CONTROL 21"
22	189515.824	2416945.849	SET MAG NAIL WITH 1-1/4" BRASS WASHER STAMPED "ODOT CONTROL 22"
23	188424.390	2416899.752	SET MAG NAIL WITH 1-1/4" BRASS WASHER STAMPED "ODOT CONTROL 23"
24	188394.690	2416907.908	SET MAG NAIL WITH 1-1/4" BRASS WASHER STAMPED "ODOT CONTROL 24"
25	187347.561	2416865.615	SET MAG NAIL WITH 1-1/4" BRASS WASHER STAMPED "ODOT CONTROL 25"
26	187362.307	2416874.853	SET MAG NAIL WITH 1-1/4" BRASS WASHER STAMPED "ODOT CONTROL 26"
27	187006.285	2416844.886	SET MAG NAIL WITH 1-1/4" BRASS WASHER STAMPED "ODOT CONTROL 27"
28	186927.679	2416831.612	SET MAG NAIL WITH 1-1/4" BRASS WASHER STAMPED "ODOT CONTROL 28"
29	186600.504	2416743.292	SET MAG NAIL WITH 1-1/4" BRASS WASHER STAMPED "ODOT CONTROL 29"
30	186462.553	2416687.773	SET MAG NAIL WITH 1-1/4" BRASS WASHER STAMPED "ODOT CONTROL 30"
31	186256.330	2416566.108	SET MAG NAIL WITH 1-1/4" BRASS WASHER STAMPED "ODOT CONTROL 31"
32	186096.719	2416426.218	SET MAG NAIL WITH 1-1/4" BRASS WASHER STAMPED "ODOT CONTROL 32"
33	185973.746	2416274.941	SET MAG NAIL WITH 1-1/4" BRASS WASHER STAMPED "ODOT CONTROL 33"
34	185796.132	2415986.023	SET MAG NAIL WITH 1-1/4" BRASS WASHER STAMPED "ODOT CONTROL 34"
35	185542.416	2415609.694	SET WHITE PLASTIC HUB WITH MAG NAIL & 1-1/4" BRASS WASHER STAMPED "ODOT CONTROL 35"
<b>ROOK</b>	<b>190862.352</b>	<b>2416989.600</b>	<b>FOUND 3" BRASS DISK SET IN CONCRETE STAMPED "ROOK 1994", DOWN 0.15 m (SN 2001 047)</b>
<b>SHER</b>	<b>192434.641</b>	<b>2416836.598</b>	<b>FOUND 3" BRASS DISK SET IN CONCRETE STAMPED "SHER 1994", DOWN 0.20 m (SN 2001 047)</b>

**LEGEND**

- ▲ SET NETWORK STATION AS NOTED
- ★ FOUND G.P.S. STATION AS NOTED
- FOUND MONUMENT AS NOTED

**FILED**

FEB 12 2004

*Brian P. Tandy*  
COUNTY SURVEYOR  
DEPUTY

REGISTERED  
PROFESSIONAL  
LAND SURVEYOR

*Brian P. Tandy*

OREGON  
JULY 17, 1986  
BRIAN P. TANDY  
2222

RENEWAL DATE 6-30-2004

OREGON DEPARTMENT  
**METRIC**  
OF TRANSPORTATION

GEOMETRONICS  
REGION 1, SURVEY GROUP  
123 NW FLANDERS STREET  
PORTLAND, OR 97209-4012  
(503) 731-3240

**SHEET 2 OF 5**

**POST-CONSTRUCTION RIGHT OF WAY MONUMENTATION SURVEY (NETWORK)**  
**HOOD RIVER CANYON ROCKFALL HWY. 35 (MP 72)**  
M.P. #72.66 TO M.P. #73.36 ON HWY. #35 (STATE ROUTE #26)  
E. 1/2 SEC. 8, N.E. 1/4 SEC. 17, T. 2 S., R. 10 E., WILLAMETTE MERIDIAN  
HOOD RIVER COUNTY, OREGON  
NOVEMBER 12, 2003

**CONFIDENCE LEVEL LIMITS  
(95% PROBABILITY LEVEL)**

PT#	SEMI MAJOR	SEMI MINOR	ORIENTATION
1	0.005 m	0.003 m	75°31'14"
2	0.009 m	0.004 m	69°27'55"
3	0.014 m	0.004 m	86°03'31"
4	0.021 m	0.005 m	89°02'56"
5	0.029 m	0.006 m	93°08'50"
6	0.044 m	0.006 m	92°19'25"
7	0.056 m	0.007 m	89°22'47"
8	0.043 m	0.006 m	92°55'02"
9	0.031 m	0.006 m	92°52'34"
10	0.025 m	0.006 m	94°03'35"
11	0.019 m	0.005 m	87°55'58"
12	0.013 m	0.004 m	83°32'06"
13	0.009 m	0.004 m	67°43'46"
14	0.005 m	0.003 m	75°10'13"
15	0.004 m	0.004 m	74°48'49"
16	0.004 m	0.003 m	38°21'29"
17	0.009 m	0.004 m	94°01'32"
18	0.010 m	0.004 m	91°53'50"
19	0.019 m	0.005 m	86°44'50"
20	0.020 m	0.005 m	86°11'40"
21	0.040 m	0.006 m	93°05'46"
22	0.041 m	0.006 m	92°35'51"
23	0.080 m	0.006 m	92°32'08"
24	0.081 m	0.006 m	92°17'24"
25	0.121 m	0.007 m	92°17'28"
26	0.121 m	0.007 m	92°07'56"
27	0.134 m	0.007 m	92°24'46"
28	0.138 m	0.007 m	92°34'38"
29	0.151 m	0.008 m	93°42'40"
30	0.157 m	0.008 m	94°25'00"
31	0.165 m	0.009 m	95°57'54"
32	0.173 m	0.011 m	97°43'45"
33	0.179 m	0.014 m	99°37'25"
34	0.189 m	0.019 m	103°10'11"
35	0.205 m	0.027 m	107°23'38"

ORIENTATION IS FROM NORTH AZIMUTH

FIXED STATIONS NOT SUBJECT TO LEAST SQUARES ADJUSTMENT OR CONFIDENCE LEVEL ANALYSIS ARE SHER AND ROOK.

**NETWORK LINES OF OBSERVATION BEARING TABLE**

FROM	TO	DISTANCE	BEARING	FROM	TO	DISTANCE	BEARING
1	2	226.824 m	N 24°14'25" W	19	20	33.548 m	S 13°02'23" E
2	3	226.055 m	N 21°31'36" E	19	21	641.726 m	S 8°23'31" W
2	13	30.057 m	S 6°41'41" E	19	22	670.481 m	S 7°16'10" W
2	14	198.053 m	S 22°11'29" E	20	21	610.621 m	S 9°32'32" W
3	4	249.844 m	N 3°39'51" E	20	22	639.125 m	S 8°18'48" W
3	12	51.584 m	S 14°32'21" W	21	22	31.496 m	S 16°15'14" E
3	13	252.939 m	S 18°18'20" W	21	23	1122.291 m	S 1°54'13" W
4	5	274.240 m	N 12°14'45" E	21	24	1151.740 m	S 1°26'57" W
4	11	67.908 m	S 8°15'46" W	22	23	1092.408 m	S 2°25'06" W
4	5	470.209 m	N 0°19'15" E	22	24	1121.776 m	S 1°56'18" W
5	10	114.260 m	S 5°02'48" E	23	24	30.800 m	S 15°21'22" E
6	7	338.399 m	N 11°11'07" W	23	25	1077.370 m	S 1°48'57" W
6	9	393.638 m	S 0°37'50" W	23	26	1062.375 m	S 1°20'35" W
6	7	369.779 m	S 11°52'29" E	24	25	1047.983 m	S 2°18'47" W
8	6	31.667 m	N 19°15'41" W	24	26	1032.912 m	S 1°50'02" W
8	9	364.020 m	S 2°19'36" W	25	26	17.401 m	N 32°04'02" E
8	5	76.606 m	S 1°16'18" E	25	27	341.904 m	S 3°28'33" W
9	10	190.767 m	S 3°31'54" E	25	28	421.256 m	S 4°37'47" W
10	4	168.601 m	S 23°52'03" W	26	27	357.281 m	S 4°48'41" W
10	11	234.717 m	S 19°24'14" W	26	28	436.773 m	S 5°40'54" W
11	3	182.236 m	S 1°57'07" W	27	28	79.719 m	S 9°35'07" W
11	12	232.852 m	S 4°43'09" W	27	29	418.306 m	S 14°03'22" W
12	13	201.494 m	S 19°16'09" W	28	29	338.887 m	S 15°06'24" W
12	2	174.967 m	S 23°34'56" W	28	30	486.859 m	S 17°11'02" W
13	4	498.684 m	N 11°01'48" E	29	30	148.704 m	S 21°55'21" W
13	14	169.280 m	S 24°54'38" E	29	31	387.105 m	S 27°14'23" W
13	1	198.373 m	S 26°51'30" E	30	31	239.438 m	S 30°32'21" W
14	1	29.752 m	S 38°00'30" E	30	32	449.718 m	S 35°33'47" W
14	SHER	275.303 m	S 18°08'03" E	31	32	212.238 m	S 41°13'58" W
15	16	20.809 m	N 28°48'05" E	31	33	405.749 m	S 45°51'25" W
15	17	195.638 m	S 6°59'47" W	32	33	194.954 m	S 50°53'33" W
15	18	208.644 m	S 3°58'59" W	32	34	533.032 m	S 55°40'22" W
16	17	215.097 m	S 9°03'20" W	32	35	986.896 m	S 55°49'45" W
16	18	227.699 m	S 6°10'53" W	33	34	339.146 m	S 58°25'07" W
17	18	16.794 m	S 33°46'43" E	34	35	453.868 m	S 56°00'46" W
17	19	331.904 m	S 8°18'03" E	ROOK	15	159.734 m	S 6°06'35" E
17	20	365.348 m	S 8°44'08" E	ROOK	16	143.166 m	S 10°52'52" E
18	19	316.826 m	S 6°59'40" E	SHER	ROOK	1579.716 m	S 5°33'29" E
18	20	350.205 m	S 7°34'21" E	SHER	1	247.529 m	N 15°47'32" W

**FILED**

FEB 12 2004

*Brian P. Tandy*  
REGISTERED PROFESSIONAL LAND SURVEYOR

REGISTERED PROFESSIONAL LAND SURVEYOR

*Brian P. Tandy*  
OREGON  
JULY 17, 1986  
BRIAN P. TANDY  
2222

RENEWAL DATE 6-30-2004



GEOMETRONICS  
REGION 1, SURVEY GROUP  
123 NW FLANDERS STREET  
PORTLAND, OR 97209-4012  
(503) 731-3240

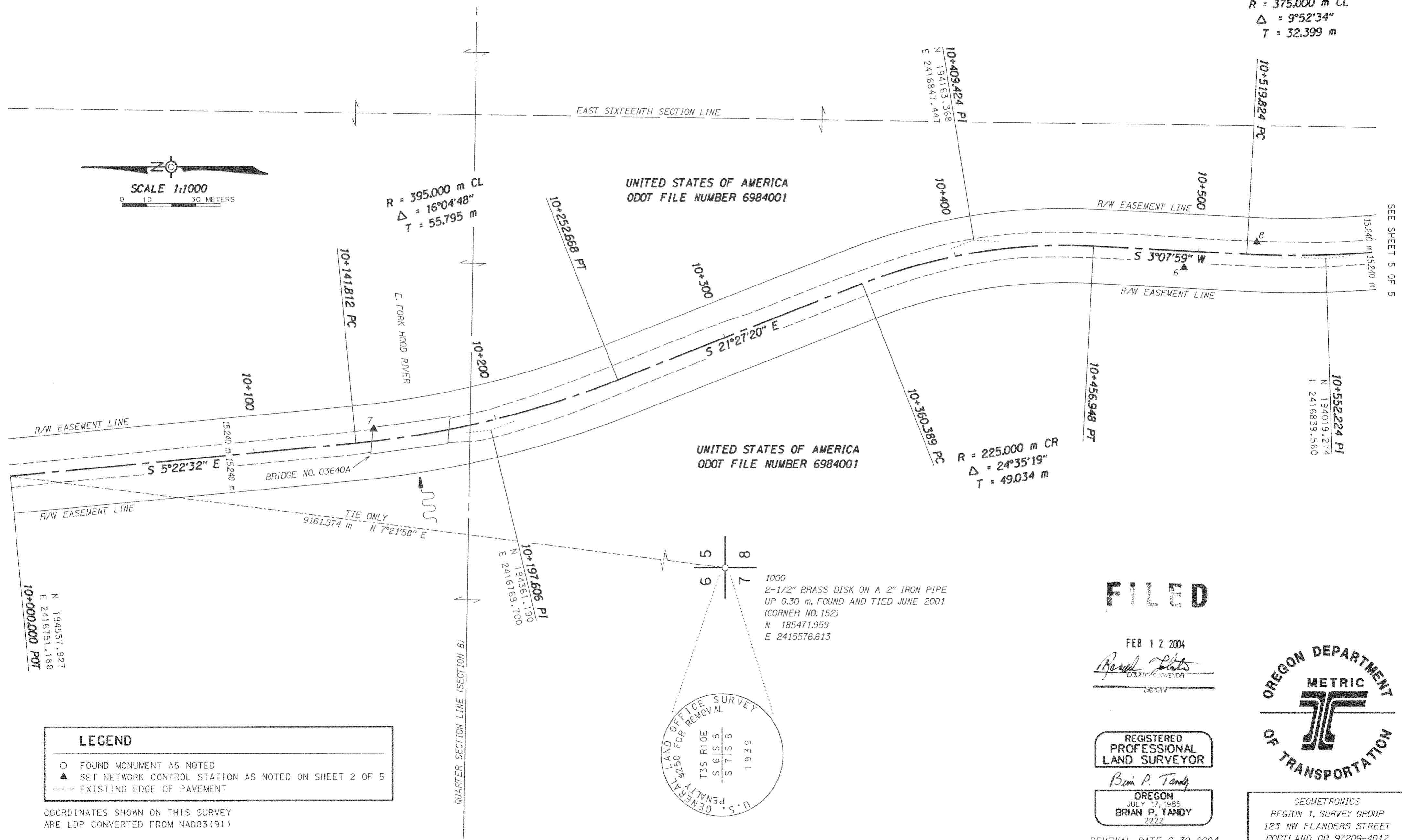
SHEET 3 OF 5

CS 2004 002 (5)

**POST-CONSTRUCTION RIGHT OF WAY MONUMENTATION SURVEY (NETWORK)**  
**HOOD RIVER CANYON ROCKFALL HWY. 35 (MP 72)**  
M.P. #72.66 TO M.P. #73.36 ON HWY. #35 (STATE ROUTE #26)  
E. 1/2 SEC. 8, N.E. 1/4 SEC. 17, T. 2 S., R. 10 E., WILLAMETTE MERIDIAN  
HOOD RIVER COUNTY, OREGON  
NOVEMBER 12, 2003

$R = 375.000 \text{ m CL}$   
 $\Delta = 9^{\circ}52'34''$   
 $T = 32.399 \text{ m}$

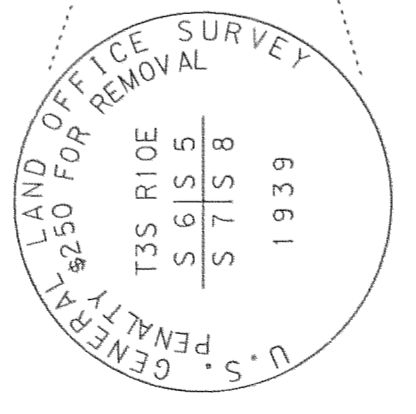
SCALE 1:1000  
0 10 30 METERS



SEE SHEET 5 OF 5

UNITED STATES OF AMERICA  
ODOT FILE NUMBER 6984001

1000  
2-1/2" BRASS DISK ON A 2" IRON PIPE  
UP 0.30 m, FOUND AND TIED JUNE 2001  
(CORNER NO. 152)  
N 185471.959  
E 2415576.613



**FILED**

FEB 12 2004  
*Ronald Platts*  
COUNTY CLERK

REGISTERED PROFESSIONAL LAND SURVEYOR

*Brian P. Tandy*  
OREGON  
JULY 17, 1986  
BRIAN P. TANDY  
2222

RENEWAL DATE 6-30-2004



GEOMETRONICS  
REGION 1, SURVEY GROUP  
123 NW FLANDERS STREET  
PORTLAND, OR 97209-4012  
(503) 731-3240

SHEET 4 OF 5

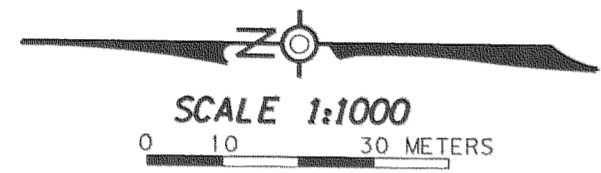
**LEGEND**  
○ FOUND MONUMENT AS NOTED  
▲ SET NETWORK CONTROL STATION AS NOTED ON SHEET 2 OF 5  
--- EXISTING EDGE OF PAVEMENT

COORDINATES SHOWN ON THIS SURVEY  
ARE LDP CONVERTED FROM NAD83(91)

CS 2004 002 (5)

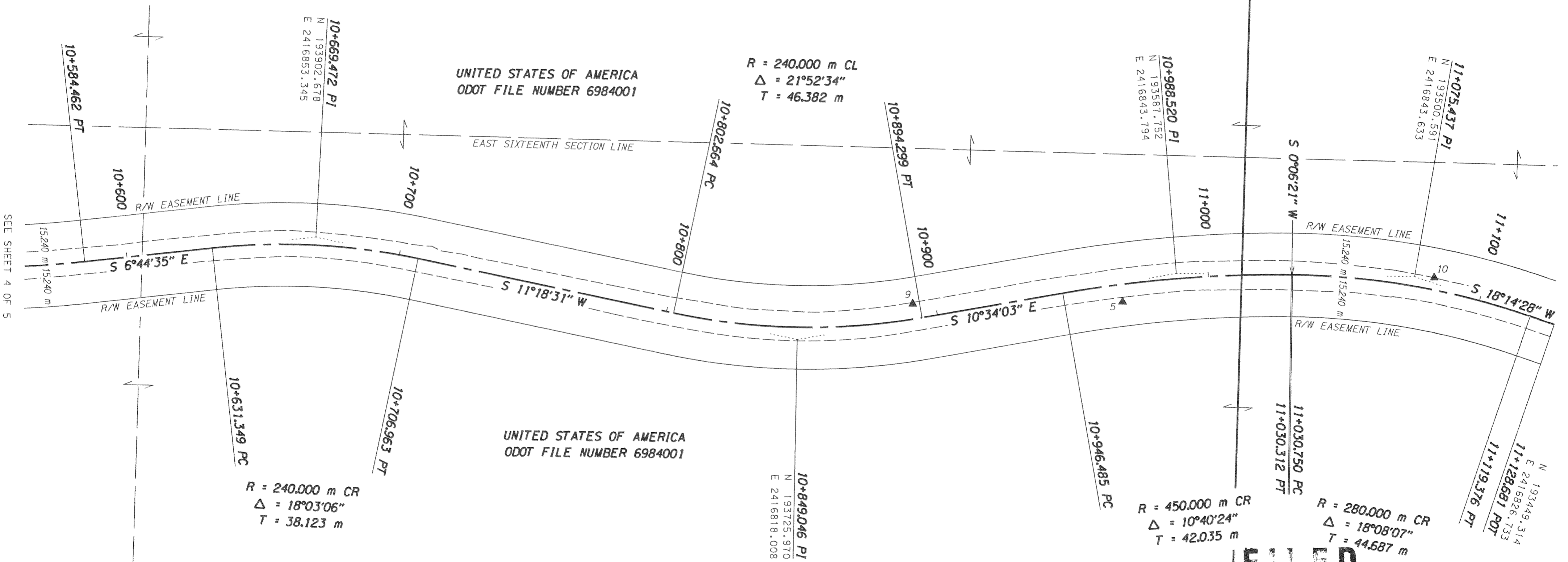
POST-CONSTRUCTION RIGHT OF WAY MONUMENTATION SURVEY (NETWORK)  
 HOOD RIVER CANYON ROCKFALL HWY. 35 (MP 72)

M.P. #72.66 TO M.P. #73.36 ON HWY. #35 (STATE ROUTE #26)  
 E. 1/2 SEC. 8, N.E. 1/4 SEC. 17, T. 2 S., R. 10 E., WILLAMETTE MERIDIAN  
 HOOD RIVER COUNTY, OREGON  
 NOVEMBER 12, 2003



SOUTH SIXTEENTH SECTION LINE

SECTION 8  
 SECTION 11



SEE SHEET 4 OF 5

**LEGEND**  
 ▲ SET NETWORK CONTROL STATION AS NOTED ON SHEET 2 OF 5  
 --- EXISTING EDGE OF PAVEMENT

COORDINATES SHOWN ON THIS SURVEY  
 ARE LDP CONVERTED FROM NAD83(91)

**FILED**

FEB 12 2004  
*Ronald Roberts*  
 COUNTY SUPERVISOR  
 DEPT 17

REGISTERED  
 PROFESSIONAL  
 LAND SURVEYOR  
*Brian P. Tandy*

OREGON  
 JULY 17, 1986  
 BRIAN P. TANDY  
 2222

RENEWAL DATE 6-30-2004



GEOMETRONICS  
 REGION 1, SURVEY GROUP  
 123 NW FLANDERS STREET  
 PORTLAND, OR 97209-4012  
 (503) 731-3240

SHEET 5 OF 5

CS 2004 002