

DEDICATION:
KNOW ALL PERSONS BY THESE PRESENCE THAT CHARLES S. & HAZEL D. BOWE HUSBAND & WIFE DO HEREBY MAKE ESTABLISH & DECLARE THE PLAT MAP TO BE A TRUE & CORRECT MAP OF THE LAND OWNED & LAID OUT AS "HAZELVIEW'S FOURTH ADDITION". SAID LAND BEING MORE PARTICULARLY DESCRIBED IN THE SURVEYOR'S CERTIFICATE HERETO ANNEXED AND CHARLES S. & HAZEL D. BOWE, ET AL, DO HEREBY DEDICATE TO THE USE OF THE PUBLIC AS PUBLIC WAYS FOREVER ALL STREETS, STORM WATER RETENTION OPEN SPACE, AND UTILITY EASEMENTS AS SHOWN ON THIS PLAT MAP.

Charles S. Bowe
CHARLES S. BOWE

Hazel D. Bowe
HAZEL D. BOWE

ACKNOWLEDGMENT:
COUNTY OF HOOD RIVER
STATE OF OREGON
BE IT REMEMBERED ON THIS 12th DAY OF December, 2003, BEFORE ME A NOTARY PUBLIC FOR THE STATE OF OREGON, PERSONALLY APPEARED CHARLES S. & HAZEL D. BOWE, KNOWN TO ME, WHO BEING FIRST DULY SWORN, SAID THAT THEY DID SIGN THIS INSTRUMENT OF THEIR FREE AND VOLUNTARY ACT.
James S. Gaylord
JAMES S. GAYLORD
NOTARY PUBLIC
COMMISSION NO. 331940
MY COMMISSION EXPIRES
DECEMBER 13, 2005
SUBSCRIBED AND SWORN BEFORE ME
THIS 12th DAY OF December, 2003
James S. Gaylord

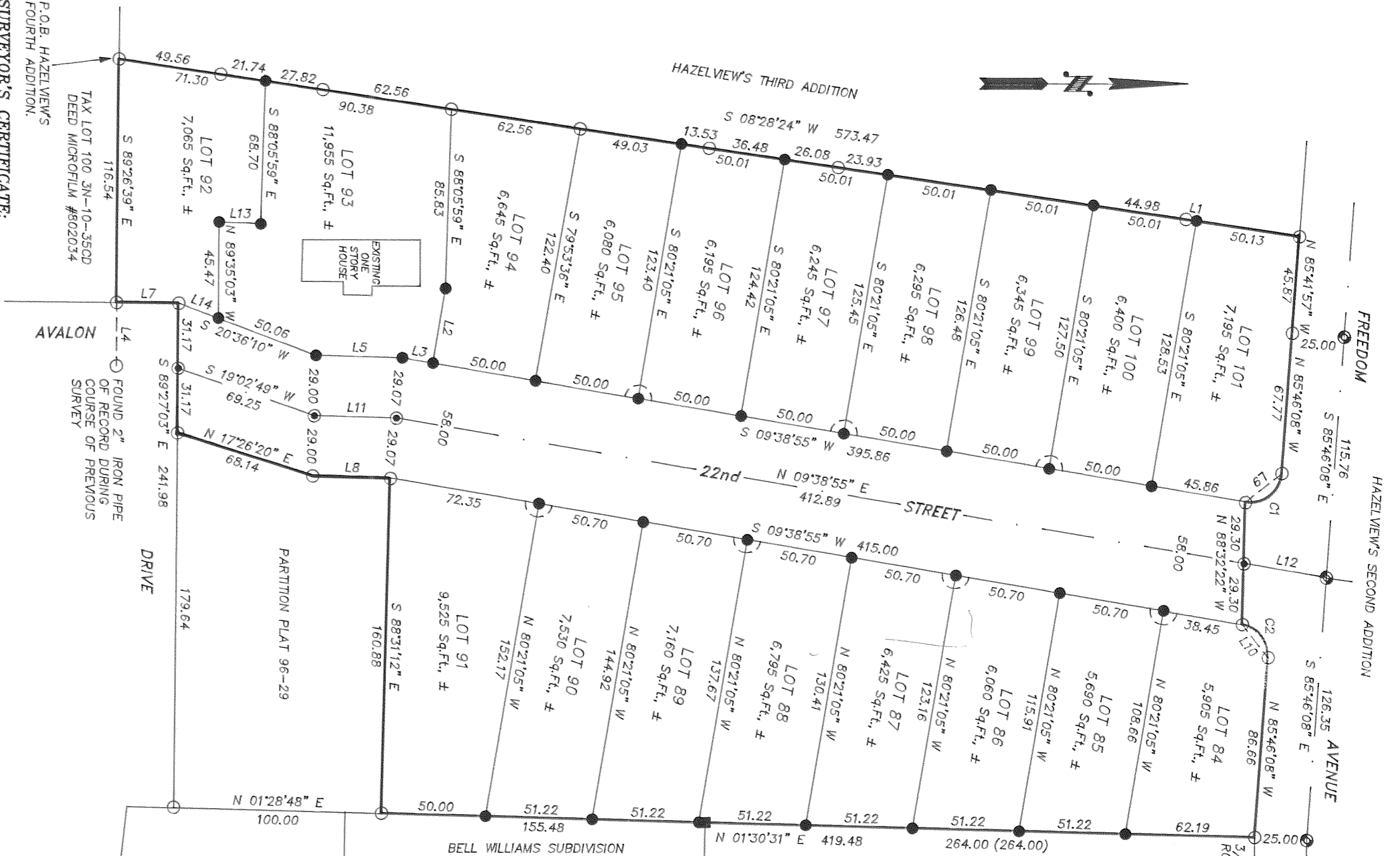
APPROVALS:
THE PLAT OF HAZELVIEW'S FOURTH ADDITION
WAS EXAMINED AND APPROVED BY ME
THIS 15th DAY OF December, 2003
David J. Peterson
2003
HOOD RIVER COUNTY SURVEYOR
THE PLAT OF HAZELVIEW'S FOURTH ADDITION
WAS EXAMINED AND APPROVED BY ME
THIS 17th DAY OF December, 2003
John J. Wadley
2003
HOOD RIVER CITY DIRECTOR OF PUBLIC WORKS & ENGINEERING
THE PLAT OF HAZELVIEW'S FOURTH ADDITION
WAS EXAMINED AND APPROVED BY ME
THIS 18th DAY OF December, 2003
Paul J. Wadley
2003
HOOD RIVER CITY DIRECTOR OF PUBLIC WORKS & ENGINEERING

THE PLAT OF HAZELVIEW'S FOURTH ADDITION
WAS EXAMINED AND APPROVED BY ME
THIS 17th DAY OF December, 2003
Paul J. Wadley
2003
HOOD RIVER CITY DIRECTOR OF PUBLIC WORKS & ENGINEERING
THE PLAT OF HAZELVIEW'S FOURTH ADDITION
WAS EXAMINED AND APPROVED BY ME
THIS 18th DAY OF December, 2003
Paul J. Wadley
2003
HOOD RIVER CITY DIRECTOR OF PUBLIC WORKS & ENGINEERING
THE PLAT OF HAZELVIEW'S FOURTH ADDITION
WAS EXAMINED AND APPROVED BY ME
THIS 17th DAY OF December, 2003
Paul J. Wadley
2003
HOOD RIVER CITY DIRECTOR OF PUBLIC WORKS & ENGINEERING
THE PLAT OF HAZELVIEW'S FOURTH ADDITION
WAS EXAMINED AND APPROVED BY ME
THIS 17th DAY OF December, 2003
Paul J. Wadley
2003
HOOD RIVER CITY DIRECTOR OF PUBLIC WORKS & ENGINEERING
THE PLAT OF HAZELVIEW'S FOURTH ADDITION
WAS EXAMINED AND APPROVED BY ME
THIS 17th DAY OF December, 2003
Paul J. Wadley
2003
HOOD RIVER CITY DIRECTOR OF PUBLIC WORKS & ENGINEERING
THE PLAT OF HAZELVIEW'S FOURTH ADDITION
WAS EXAMINED AND APPROVED BY ME
THIS 17th DAY OF December, 2003
Paul J. Wadley
2003
HOOD RIVER CITY DIRECTOR OF PUBLIC WORKS & ENGINEERING
THE PLAT OF HAZELVIEW'S FOURTH ADDITION
WAS EXAMINED AND APPROVED BY ME
THIS 17th DAY OF December, 2003
Paul J. Wadley
2003
HOOD RIVER CITY DIRECTOR OF PUBLIC WORKS & ENGINEERING

LOCATION OF SURVEY:
A PORTION OF THE NORTHEAST QUARTER OF THE SOUTHWEST QUARTER AND THE PORTION OF THE NORTHWEST QUARTER OF THE SOUTHWEST QUARTER OF SECTION 35, TOWNSHIP 3 NORTH, RANGE 10 EAST, WILLAMETTE MERIDIAN, HOOD RIVER COUNTY, OREGON.
REFERENCES:
HOOD RIVER COUNTY SURVEYORS OFFICE C.S.#94103.
HOOD RIVER COUNTY SURVEYORS OFFICE C.S.#96021.
HOOD RIVER COUNTY SURVEYORS OFFICE C.S.#99104.
HOOD RIVER COUNTY SURVEYORS OFFICE C.S.#2001064.
HOOD RIVER COUNTY SURVEYORS OFFICE C.S.#2001090.
HOOD RIVER COUNTY SURVEYORS OFFICE C.S.#2002011.
HOOD RIVER COUNTY SURVEYORS OFFICE C.S.#2002035.
HOOD RIVER COUNTY SURVEYORS OFFICE C.S.#2003021.
HOOD RIVER COUNTY SURVEYORS OFFICE C.S.#2003035.

LOCATION OF SURVEY:
A PORTION OF THE NORTHEAST QUARTER OF THE SOUTHWEST QUARTER AND THE PORTION OF THE NORTHWEST QUARTER OF THE SOUTHWEST QUARTER OF SECTION 35, TOWNSHIP 3 NORTH, RANGE 10 EAST, WILLAMETTE MERIDIAN, HOOD RIVER COUNTY, OREGON.
REFERENCES:
HOOD RIVER COUNTY SURVEYORS OFFICE C.S.#94103.
HOOD RIVER COUNTY SURVEYORS OFFICE C.S.#96021.
HOOD RIVER COUNTY SURVEYORS OFFICE C.S.#99104.
HOOD RIVER COUNTY SURVEYORS OFFICE C.S.#2001064.
HOOD RIVER COUNTY SURVEYORS OFFICE C.S.#2001090.
HOOD RIVER COUNTY SURVEYORS OFFICE C.S.#2002011.
HOOD RIVER COUNTY SURVEYORS OFFICE C.S.#2002035.
HOOD RIVER COUNTY SURVEYORS OFFICE C.S.#2003021.
HOOD RIVER COUNTY SURVEYORS OFFICE C.S.#2003035.

REGISTERED
PROFESSIONAL
LAND SURVEYOR
OREGON
JULY 13, 1979
ROY O. GAYLORD
1815
Expires: June, 2005



LINE TABLE:

LINE NO.	BEARING	DISTANCE
L1	N 08°28'23" E	5.03
L2	S 80°21'05" E	35.06
L3	S 09°38'55" W	14.94
L4	S 89°42'44" W	30.41
L5	S 01°28'45" W	41.54
L6	S 78°08'17" E	27.53
L7	N 00°30'54" E	30.00
L8	N 01°28'45" E	37.40
L9	N 38°10'37" W	22.19
L10	S 51°56'23" W	20.19
L11	S 01°28'45" W	38.48
L12	S 09°38'55" W	40.18
L13	N 01°54'01" E	20.00
L14	S 20°36'10" W	20.36

CURVE TABLE:

NO.	DELTA	RADIUS	LENGTH
C1	95°25'03"	15.00	24.98
C2	84°34'57"	15.00	22.14

NOTES:
PACIFIC POWER & LIGHT CO., BOOK 35 AT PAGE 12 IS A BLANKET EASEMENT WITH NO SPECIFIC DESCRIPTION. FARMERS IRRIGATION DISTRICT HAS SEVERAL BOOK & PAGE EASEMENTS WHICH MAY AFFECT THE PLAT BUT WILL BE REVISED & SATISFIED BY THE NEW 10' UNDERGROUND UTILITY EASEMENTS DESIGNATED ON THIS PLAT.

SURVEYOR'S CERTIFICATE:
I, ROY O. GAYLORD, REGISTERED LAND SURVEYOR FOR THE STATE OF OREGON, BEING FIRST DULY SWORN, DEPOSED AND SAY THAT I HAVE CORRECTLY SURVEYED AND MARKED WITH LEGAL MONUMENTS THE LAND REPRESENTED ON THE PLAT OF "HAZELVIEW'S FOURTH ADDITION" HOOD RIVER COUNTY, STATE OF OREGON.
THE SUBDIVISION PARCEL:
PARCEL 2 OF HOOD RIVER COUNTY PARTITION PLAT No.200308-P, RECORDED MARCH 26, 2003, HOOD RIVER COUNTY RECORDS, LOCATED IN THE SOUTHWEST QUARTER OF SECTION 35, TOWNSHIP 3 NORTH, RANGE 10 EAST, WILLAMETTE MERIDIAN, COUNTY OF HOOD RIVER AND STATE OF OREGON, BEING MORE PARTICULARLY DESCRIBED AS FOLLOWS: BEGINNING AT THE SOUTHEAST CORNER OF THE SUBDIVISION PLAT OF HAZELVIEW'S THIRD ADDITION, RECORDED JUNE 3, 2003 AS INSTRUMENT No.20033270, HOOD RIVER COUNTY RECORDS, SAID POINT BEING ON THE NORTH LINE OF THE TRACT OF LAND TRANSFERRED TO JAMES L. TOLLEN AND DOROTHY E. TOLLEN BY WARRANTY DEED RECORDED SEPTEMBER 4, 1980 AS INSTRUMENT No.802034, HOOD RIVER COUNTY RECORDS, THENCE SOUTH 89°26'39" EAST ALONG THE NORTH LINE OF SAID TOLLEN TRACT A DISTANCE OF 116.54 FEET TO THE RIGHT OF WAY OF AVALON DRIVE, THENCE NORTH 00°50'54" EAST ALONG THE RIGHT OF WAY OF SAID AVALON DRIVE, A DISTANCE OF 30.00 FEET; THENCE SOUTH 89°27'03" EAST ALONG THE RIGHT OF WAY OF SAID AVALON DRIVE A DISTANCE OF 62.34 FEET TO THE SOUTHWEST CORNER OF PARCEL 3 OF PARTITION No.96-29, A DISTANCE OF 68.14 FEET; THENCE NORTH 01°28'45" EAST ALONG THE WEST LINE OF SAID PARCEL 3 OF PARTITION No.96-29, A DISTANCE OF 37.40 FEET TO THE NORTHWEST CORNER THEREOF; THENCE SOUTH 88°31'12" EAST ALONG THE NORTH LINE OF SAID PARCEL 3 OF PARTITION No.96-29, A DISTANCE OF 160.88 FEET TO THE WEST LINE OF THE SUBDIVISION PLAT OF BELL-WILLIAMS SUBDIVISION, RECORDED MARCH 18, 2003, HOOD RIVER COUNTY RECORDS; THENCE NORTH 01°30'31" EAST ALONG THE SAID WEST LINE OF THE SUBDIVISION PLAT OF BELL-WILLIAMS SUBDIVISION, A DISTANCE OF 155.48 FEET TO THE NORTHWEST CORNER THEREOF; AND THE SOUTHWEST CORNER OF THE TRACT OF LAND CONVEYED TO HOOD RIVER HEIGHTS, LLC, AN OREGON LIMITED LIABILITY COMPANY BY STATUTORY BARGAIN AND SALE DEED RECORDED OCTOBER 10, 1999 AS INSTRUMENT No.994504, HOOD RIVER COUNTY RECORDS, THENCE CONTINUING NORTH 01°30'31" EAST ALONG THE SAID WEST LINE OF THE SAID HOOD RIVER HEIGHTS, LLC, TRACT A DISTANCE OF 264.00 FEET TO THE SOUTH LINE OF THE SUBDIVISION PLAT OF HAZELVIEW'S SECOND ADDITION, RECORDED JUNE 5, 2002 AS INSTRUMENT No.20022711, HOOD RIVER COUNTY RECORDS; THENCE NORTH 85°46'08" WEST ALONG THE SOUTH LINE OF THE SAID SUBDIVISION PLAT OF HAZELVIEW'S SECOND ADDITION, A DISTANCE OF 86.66 FEET; THENCE ALONG THE SOUTH LINE OF THE SAID SUBDIVISION PLAT OF HAZELVIEW'S SECOND ADDITION ALONG A 15 FOOT RADIUS CURVE TO THE LEFT (THE LONG CHORD OF WHICH BEARS SOUTH 51°56'23" WEST A DISTANCE OF 20.19 FEET); AN ARC DISTANCE OF 22.14 FEET; THENCE NORTH 88°32'22" WEST ALONG THE SOUTH LINE OF THE SAID SUBDIVISION PLAT OF HAZELVIEW'S SECOND ADDITION, A DISTANCE OF 58.60 FEET; THENCE ALONG THE SOUTH LINE OF THE SAID SUBDIVISION PLAT OF HAZELVIEW'S SECOND ADDITION ALONG A 15 FOOT RADIUS CURVE TO THE LEFT (THE LONG CHORD OF WHICH BEARS NORTH 38°03'37" WEST A DISTANCE OF 22.19 FEET); AN ARC DISTANCE OF 24.98 FEET; THENCE NORTH 85°46'08" WEST ALONG THE SOUTH LINE OF THE SAID SUBDIVISION PLAT OF HAZELVIEW'S SECOND ADDITION, A DISTANCE OF 67.77 FEET TO THE EAST LINE OF THE SAID SUBDIVISION PLAT OF HAZELVIEW'S THIRD ADDITION; THENCE NORTH 85°41'57" WEST ALONG THE EAST LINE OF THE SAID SUBDIVISION PLAT OF HAZELVIEW'S THIRD ADDITION, A DISTANCE OF 45.87 FEET; THENCE SOUTH 08°28'24" WEST ALONG THE EAST LINE OF THE SAID SUBDIVISION PLAT OF HAZELVIEW'S THIRD ADDITION, A DISTANCE OF 573.47 FEET TO THE POINT OF BEGINNING. EXCEPTING THEREFROM ANY LANDS WHICH MAY BE CONTAINED WITHIN EXISTING DEDICATED PUBLIC STREETS AND ROADS.

THE DIRECTOR OF RECORDS AND ASSESSMENTS AND THE DIRECTOR OF BUDGET AND FINANCE AND TAX COLLECTOR, RESPECTIVELY, OF HOOD RIVER COUNTY, OREGON, HEREBY CERTIFY THAT WE HAVE EXAMINED THE PLAT OF "HAZELVIEW'S FOURTH ADDITION" IN THE COUNTY OF HOOD RIVER AND THAT THE NAME ADDED FOR SAID PLAT IS A PROPER NAME AND NOT INCLUDED IN ANY OTHER SUBDIVISION IN HOOD RIVER COUNTY, AND FURTHER CERTIFY THAT ALL ASSESSMENTS DUE HEREON HAVE BEEN FULLY PAID AS REQUIRED BY LAW AND WE HEREBY APPROVE SAID PLAT.
David J. Peterson
HOOD RIVER COUNTY DIRECTOR OF BUDGET AND FINANCE & TAX COLLECTOR
John J. Wadley
HOOD RIVER COUNTY DIRECTOR OF RECORDS AND ASSESSMENTS
Paul J. Wadley
HOOD RIVER COUNTY DIRECTOR OF PUBLIC WORKS & ENGINEERING
DEC 31 2003
Paul J. Wadley
COUNTY SURVEYOR
PLAT OF
HAZELVIEW'S FOURTH ADDITION
HOOD RIVER COUNTY, OREGON
TYPICAL EASEMENT FOR UNDERGROUND UTILITIES. EASEMENT IS A 5 FOOT RADIUS CURVICULAR EASEMENT ABOUT THE IRON ROD SET FOR THE PROPERTY CORNER WHERE SHOWN. TO SCALE.
OWNERS:
CHARLES & HAZEL BOWE
3549 INDIAN CLIFF DRIVE
HOOD RIVER, OR. 97031
PHONE 541.386.4596
TERRA SURVEYING
DATE: DECEMBER, 2003
SCALE: 1" = 50'
PROJECT: 2003029PLAT
ASSESSORS MAP: 3N-10-35CA & 35DB
P.O. BOX 617
HOOD RIVER, OREGON 97031
PHONE & FAX: (541) 386-4531
E-Mail: terra@terra.net

C5 2003 088

C5 2003 088