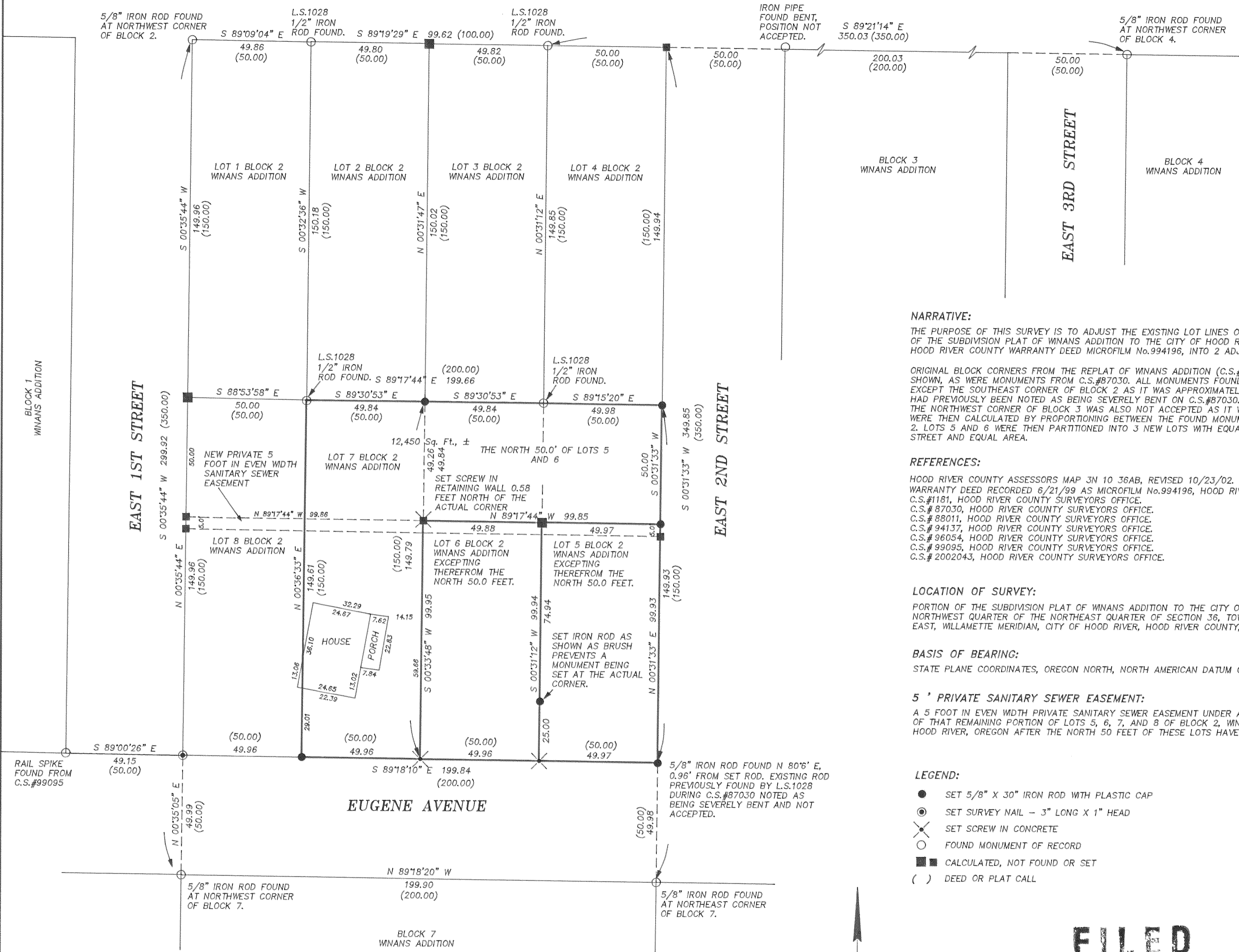


SHERMAN AVENUE



BOUNDARY LINE ADJUSTMENT SURVEY
for
BONITA DARR

NARRATIVE:

THE PURPOSE OF THIS SURVEY IS TO ADJUST THE EXISTING LOT LINES OF LOTS 5, 6 AND 7 OF BLOCK 2 OF THE SUBDIVISION PLAT OF WINANS ADDITION TO THE CITY OF HOOD RIVER, ALSO BEING A PORTION OF HOOD RIVER COUNTY WARRANTY DEED MICROFILM No.994196, INTO 2 ADJUSTED LOTS AS SHOWN.

ORIGINAL BLOCK CORNERS FROM THE REPLAT OF WINANS ADDITION (C.S.#1181) WERE RECOVERED AS SHOWN, AS WERE MONUMENTS FROM C.S.#87030. ALL MONUMENTS FOUND OF RECORD WERE ACCEPTED EXCEPT THE SOUTHEAST CORNER OF BLOCK 2 AS IT WAS APPROXIMATELY 1 FOOT OUT OF POSITION AND HAD PREVIOUSLY BEEN NOTED AS BEING SEVERELY BENT ON C.S.#87030. THE ORIGINAL PIPE FOUND AT THE NORTHWEST CORNER OF BLOCK 3 WAS ALSO NOT ACCEPTED AS IT WAS BENT. MISSING CORNERS WERE THEN CALCULATED BY PROPORTIONING BETWEEN THE FOUND MONUMENTS TO REESTABLISH BLOCK 2. LOTS 5 AND 6 WERE THEN PARTITIONED INTO 3 NEW LOTS WITH EQUAL FRONTAGE ON EAST SECOND STREET AND EQUAL AREA.

REFERENCES:

HOOD RIVER COUNTY ASSESSORS MAP 3N 10 36AB, REVISED 10/23/02.
WARRANTY DEED RECORDED 6/21/99 AS MICROFILM No.994196, HOOD RIVER COUNTY DEED RECORDS.
C.S.#1181, HOOD RIVER COUNTY SURVEYORS OFFICE.
C.S.#87030, HOOD RIVER COUNTY SURVEYORS OFFICE.
C.S.#88011, HOOD RIVER COUNTY SURVEYORS OFFICE.
C.S.#94137, HOOD RIVER COUNTY SURVEYORS OFFICE.
C.S.#96054, HOOD RIVER COUNTY SURVEYORS OFFICE.
C.S.#99095, HOOD RIVER COUNTY SURVEYORS OFFICE.
C.S.#2002043, HOOD RIVER COUNTY SURVEYORS OFFICE.

LOCATION OF SURVEY:

PORTION OF THE SUBDIVISION PLAT OF WINANS ADDITION TO THE CITY OF HOOD RIVER, LOCATED IN THE NORTHWEST QUARTER OF THE NORTHEAST QUARTER OF SECTION 36, TOWNSHIP 3 NORTH, RANGE 10 EAST, WILLAMETTE MERIDIAN, CITY OF HOOD RIVER, HOOD RIVER COUNTY, OREGON.

BASIS OF BEARING:

STATE PLANE COORDINATES, OREGON NORTH, NORTH AMERICAN DATUM OF 1983 (1998 ADJUSTMENT).

5' PRIVATE SANITARY SEWER EASEMENT:

A 5 FOOT IN EVEN WIDTH PRIVATE SANITARY SEWER EASEMENT UNDER AND ACROSS THE NORTH 5 FEET OF THAT REMAINING PORTION OF LOTS 5, 6, 7, AND 8 OF BLOCK 2, WINANS ADDITION TO THE CITY OF HOOD RIVER, OREGON AFTER THE NORTH 50 FEET OF THESE LOTS HAVE BEEN EXCEPTED OUT.

LEGEND:

- SET 5/8" X 30" IRON ROD WITH PLASTIC CAP
- ⊙ SET SURVEY NAIL - 3" LONG X 1" HEAD
- ⊗ SET SCREW IN CONCRETE
- FOUND MONUMENT OF RECORD
- CALCULATED, NOT FOUND OR SET
- () DEED OR PLAT CALL

REGISTERED
PROFESSIONAL
LAND SURVEYOR

OREGON
JULY 13, 1979
ROY O. GAYLORD
1815

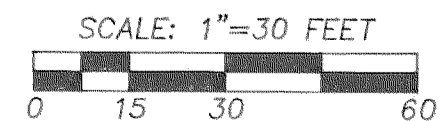
Expires: June, 2005

FILED

NOV 25 2003
County Surveyor

TERRA SURVEYING

DATE: NOVEMBER, 2003
SCALE: 1" = 30'
PROJECT: 203039ADJUST
ASSESSORS MAP: 3N 10 36AB
P.O. BOX 617
HOOD RIVER, OREGON 97031
PHONE & FAX: (541) 386-4531
E-Mail: terra@gorge.net



Revised 11-24-03 1390

CS 2003 079