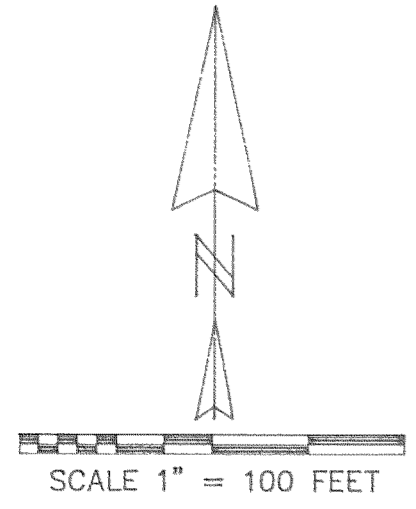


NORTHWEST CORNER SECTION 6
FOUND BRASS CAP

NORTH QUARTER CORNER SECTION 6
FOUND PIPE WITH BRASS CAP

BASIS OF BEARING: CS# 1464
(2644.13')
N89°16'23"E 2643.69'



REGISTERED PROFESSIONAL LAND SURVEYOR

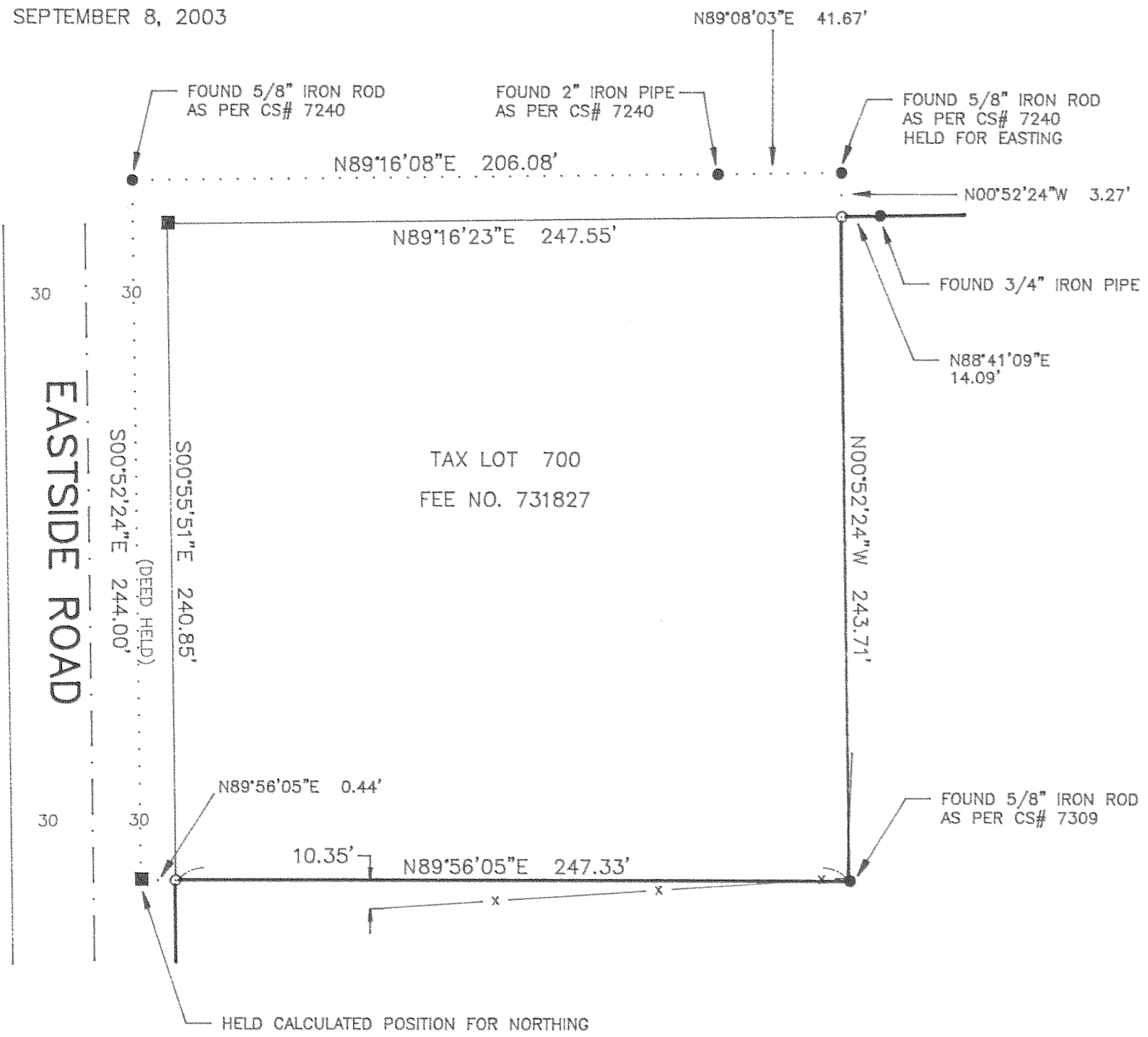
Kevin Dowd

OREGON
JULY 26, 1989
KEVIN DOWD
2393
RENEW DATE: 12-31-03
SEPTEMBER 8, 2003

EASTSIDE ROAD

TAX LOT 700
DEED EXCEPTION
SEE DETAIL

TAX LOT 701
FEE NO. 20001240 PARCEL 1



DETAIL
NOT TO SCALE

LEGEND:

- SET 1/2" X 30" IRON ROD WITH YELLOW PLASTIC CAP STAMPED "WYEAST LS 2393"
- FOUND MONUMENT AS NOTED
- CALCULATED POSITION

NARRATIVE:

THE PURPOSE OF THIS SURVEY IS TO ESTABLISH THE BOUNDARIES OF PARCEL 1 OF THOSE TRACTS OF LAND DESCRIBED IN DEED RECORDED AS FEE NO. 20001240. THE NORTH LINE WAS ESTABLISHED ALONG THE NORTH SECTION LINE AS PER DEED. MONUMENTS WERE LOCATED AT THE NORTH QUARTER CORNER AND THE NORTHWEST SECTION CORNER FOR PROPERTY TO THE NORTH WERE ACCEPTED IN THEIR FOUND POSITIONS. THE EAST RIGHT OF WAY LINE OF EASTSIDE ROAD WAS ESTABLISHED 30 FEET EAST OF AND PARALLEL WITH THE AS BUILT CENTERLINE ALIGNMENT OF SAID ROAD. THE SOUTH LINE WAS ESTABLISHED 419.49 FEET SOUTH OF AND PARALLEL WITH THE NORTH SECTION LINE. THE EAST LINE WAS ESTABLISHED ALONG THE EAST LINE OF THE NORTHWEST QUARTER AS PER DEED. MONUMENTS WERE LOCATED AT THE NORTH QUARTER CORNER AND THE CENTER QUARTER CORNER TO ESTABLISH SAID EAST LINE. MONUMENTS WERE RECOVERED AT THE NORTHWEST, NORTHEAST AND SOUTHEAST CORNERS OF THE DEED EXCEPTION LOCATED IN THE NORTHWEST CORNER OF THE SUBJECT TRACT. THE MISSING SOUTHWEST CORNER WAS CALCULATED AT DEED DISTANCE SOUTH OF THE NORTHWEST CORNER AND PARALLEL WITH THE EAST LINE. THE MONUMENTS HAD BEEN SET BY CS# 7240 AND CS# 7309. THESE MONUMENTS ARE OUT OF POSITION IN RELATION TO THE NORTH LINE OF THE SECTION AS ESTABLISHED BY THIS SURVEY. A REVIEW OF CS# 7240 INDICATES THAT THE NORTH QUARTER CORNER AND THE NORTHWEST SECTION CORNER WERE NOT LOCATED. THE NORTH SECTION LINE POSITION WAS CALCULATED BASED ON CS# 1464 DATA. MY TIES INDICATE THAT A BLUNDER WAS MADE IN THIS CALCULATION. AS THE EXCEPTED TRACT WAS CREATED IN CONJUNCTION WITH THE ABOVE MENTIONED SURVEYS I HELD THE FOUND MONUMENTS FOR LINE. THE CORNERS WERE THEN ESTABLISHED AT THE INTERSECTION OF SAID LINES WITH THE NORTH AND WEST LINES OF THE SUBJECT TRACT. THE IRON ROD FOUND AT THE SOUTHEAST CORNER OF TAX LOT 700 WAS ACCEPTED.

CENTER QUARTER CORNER SECTION 6
FOUND 5/8" IRON ROD
AS PER CS# 88042

FILED

OCT 13 2003
Kevin Dowd
COUNTY CLERK

RECORD OF SURVEY

SITUATED IN THE NORTHWEST QUARTER OF SECTION 6
T2 NORTH, R11 EAST, W.M.
HOOD RIVER COUNTY, OREGON
FOR: JULIE TAYLOR

WYEAST SURVEYS
KEVIN DOWD
4399 WOODWORTH DR.
MT HOOD, OR 97041
(541) 352-6065

Rev: 10-2-03 0900

CS 2003 068

TAX LOT 701, 2N 11 6