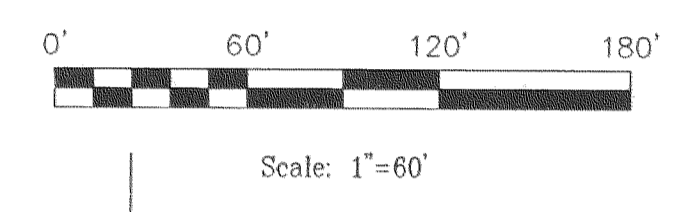
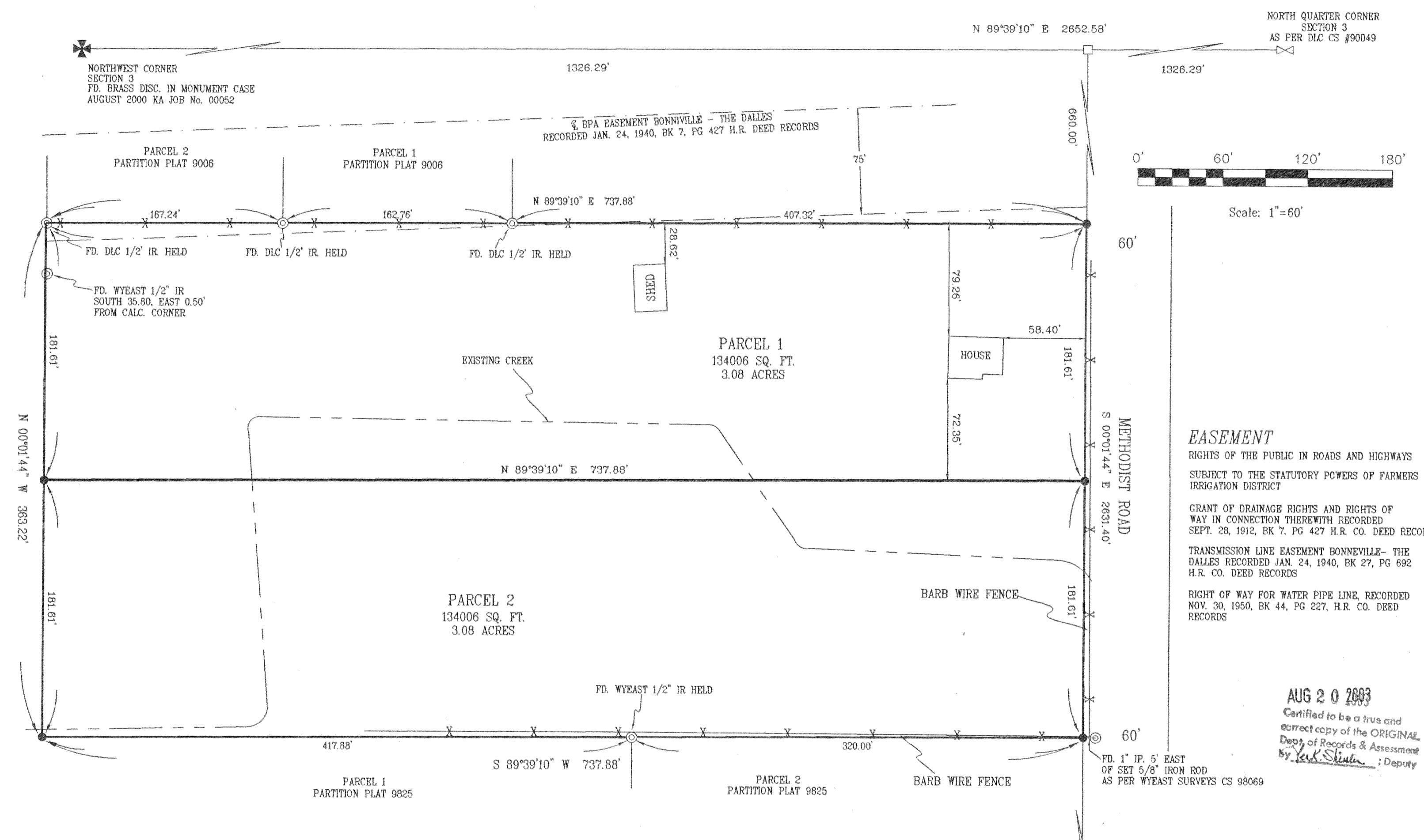


PARTITION IN  
NW 1/4, SECTION 3, TOWNSHIP 2 NORTH, RANGE 10 EAST, W.M.  
HOOD RIVER COUNTY, STATE OF OREGON  
2N 10E 3B, TAX LOT #2000

RECORDS AND ASSESSMENT  
HOOD RIVER CO.  
Aug 20 10 18 AM '03

PARTITION PLAT NO. 200320P  
Instrument received on the 20<sup>th</sup> day of August, 2003 at 10:18 AM  
*Jack Skiba*  
Hood River County Director of Records and Assessments



**EASEMENT**  
RIGHTS OF THE PUBLIC IN ROADS AND HIGHWAYS  
SUBJECT TO THE STATUTORY POWERS OF FARMERS IRRIGATION DISTRICT  
GRANT OF DRAINAGE RIGHTS AND RIGHTS OF WAY IN CONNECTION THEREWITH RECORDED SEPT. 28, 1912, BK 7, PG 427 H.R. CO. DEED RECORDS  
TRANSMISSION LINE EASEMENT BONNEVILLE- THE DALLES RECORDED JAN. 24, 1940, BK 27, PG 692 H.R. CO. DEED RECORDS  
RIGHT OF WAY FOR WATER PIPE LINE, RECORDED NOV. 30, 1950, BK 44, PG 227, H.R. CO. DEED RECORDS

AUG 20 2003  
Certified to be a true and correct copy of the ORIGINAL  
Dept. of Records & Assessment  
By *Jack Skiba*, Deputy

- LEGEND**
- = SET 5/8" IR WITH PLASTIC CAP MARKED OR #932 & WA #22098 EXCEPT AS NOTED
  - ⊙ = FOUND MONUMENT AS NOTED
  - = CALCULATED CORNER AS NOTED
  - ⊠ = CALCULATED 1/4 COR AS NOTED
  - ⊞ = CALCULATED SEC COR AS NOTED
  - ⊞ = FOUND 1/4 COR AS NOTED
  - ⊞ = FOUND SEC COR AS NOTED

**REFERENCE SURVEYS**  
SURVEY BY DLC CS #90049, PARTITION PLAT #9006  
SURVEY BY DLC CS #90095, PARTITION PLAT #9024  
SURVEY BY WYEAST SURVEYS CS #98069, PARTITION PLAT #9825

**BASIS OF BEARING**  
SURVEY BY DLC CS #90095, PARTITION PLAT #9024

**NARRATIVE OF SURVEY**  
The purpose of this survey is to divide the land as requested by Douglas and Cheramy Rovianek as described in Instrument No. 20031898. Three surveys were used in locating the boundary of this parcel as shown herein. One by DLC surveying CS #90049, another by DLC Surveying CS #90095 and a third by Wyeast surveys CS #98069. Monuments located along the North boundary were found and held as per CS #90049. Monuments located along the South boundary were found and held as per CS #98069. No discrepancies were found and monuments were then set.

REGISTERED PROFESSIONAL LAND SURVEYOR  
*Anthony C. Klein*  
ANTHONY C. KLEIN  
932  
EXPIRES 6-30-05

FILED  
AUG 27 2003  
*Reuben Tolbert*  
COUNTY CLERK  
DEPUTY  
Partition For  
Douglas and Cheramy Rovianek

**Klein & Assoc.**  
LAND SURVEYING  
1412 13th Street  
Hood River, Oregon 97031  
Tele: (541)386-3322  
DATE SURVEYED: JUNE 2003  
JOB NO.: 03019

**SURVEYS CERTIFICATE**  
I, Anthony C. Klein, being first duly sworn, depose and say that I have correctly surveyed and marked with proper monuments the lands represented on this Partition Plat, the boundaries being described in Instrument No. 20031898 dated April 3, 2003, Hood River County Records, to Douglas G Rovianek and Cheramy A. Rovianek

*Anthony C. Klein*  
ANTHONY C. KLEIN PLS 932

**ACKNOWLEDGMENTS**  
We the owners of the land shown herein, hereby declare that this division of land has been made with our free consent and in accordance with our desires.

This instrument was acknowledged before me on 7/22/03 (date) by  
*Cheramy Rovianek* 7/22/03  
NAME: Cheramy Rovianek Date  
*Doug Rovianek* 7/22/03  
NAME: Doug Rovianek Date  
*Heidi Staphill*  
Notary Signature

NOTARY PUBLIC-OREGON  
COMMISSION No. 357239  
MY COMMISSION EXPIRES June 1, 2006

**APPROVALS**  
I hereby certify that all taxes and assessment due hereon have been fully paid as required by law.

*Reuben Tolbert*  
Hood River County Director of Budget and Finance.

I hereby certify this partition was examined and approved as of this 31<sup>st</sup> day of July, 2003  
*Reuben Tolbert*  
Hood River County Surveyor

I hereby certify this partition was examined and approved as of this 19<sup>th</sup> day of August, 2003  
*M. Benedict*  
Hood River County Planning Director

CS 2003 058