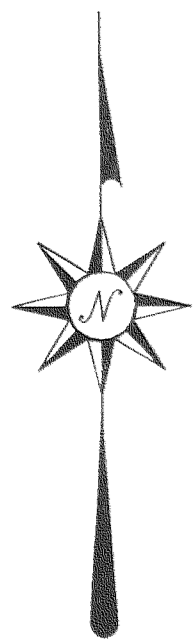


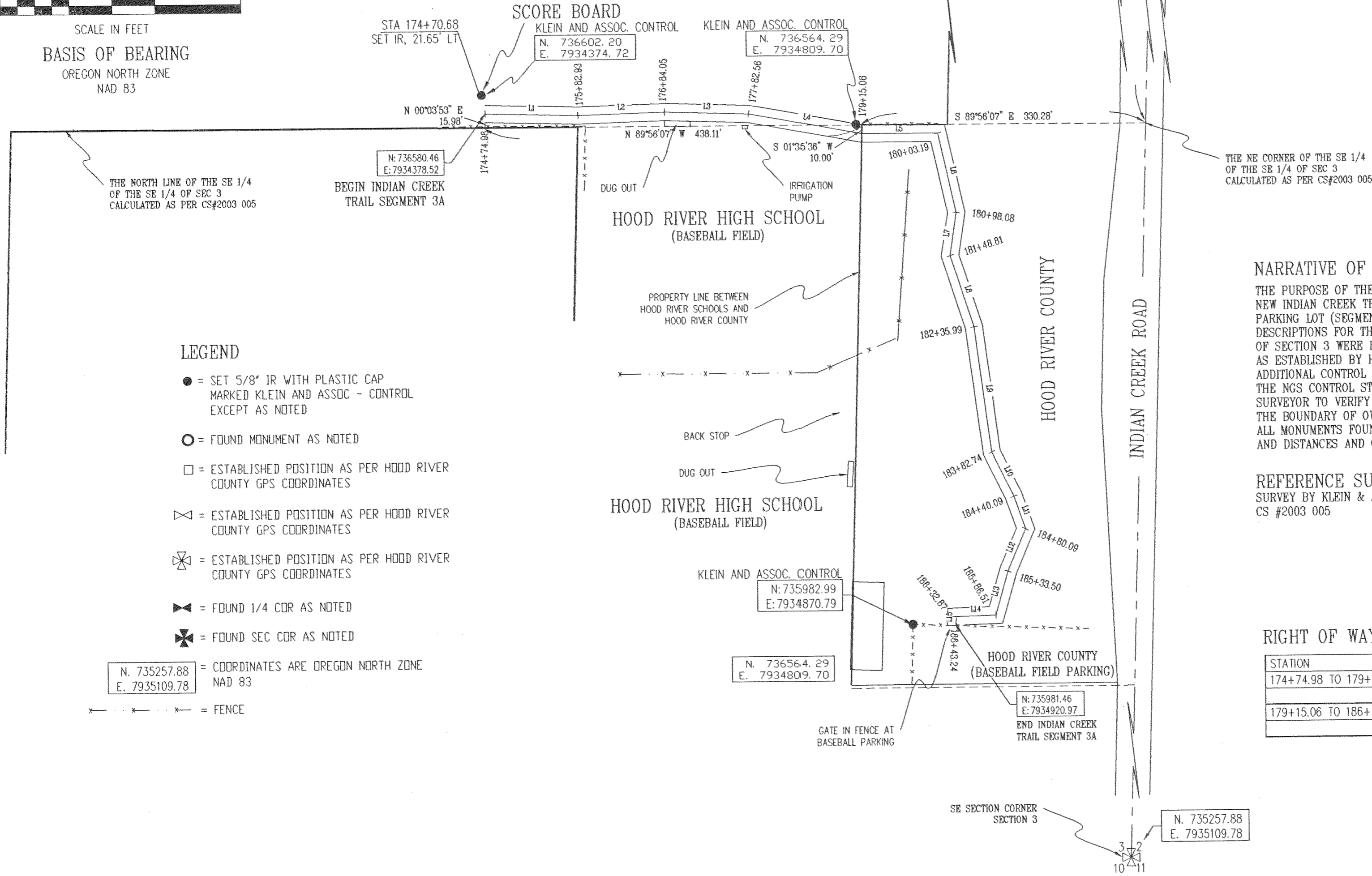
SURVEY IN
NW 1/4, SECTION 2, AND THE E 1/2 SECTION 3
TOWNSHIP 2 NORTH, RANGE 10 EAST, WM
COUNTY OF HOOD RIVER, STATE OF OREGON



SCALE IN FEET
BASIS OF BEARING
OREGON NORTH ZONE
NAD 83

LINE TABLE
COURSES ALONG CENTER LINE OF TRAIL

LINE	BEARING	DISTANCE
L1	S 88°41'22" E	108.25'
L2	N 88°25'44" E	101.12'
L3	S 88°17'12" E	98.22'
L4	S 79°38'22" E	132.50'
L5	S 89°55'58" E	88.13'
L6	S 12°45'39" E	94.86'
L7	S 08°25'51" W	50.74'
L8	S 17°56'34" E	87.17'
L9	S 07°38'40" E	146.76'
L10	S 25°56'47" E	57.34'
L11	S 19°38'44" E	40.01'
L12	S 22°56'17" W	53.41'
L13	S 15°48'46" W	53.01'
L14	S 88°08'11" W	46.36'
L15	S 01°45'07" W	10.37'



LEGEND

- = SET 5/8" IR WITH PLASTIC CAP MARKED KLEIN AND ASSOC - CONTROL EXCEPT AS NOTED
- = FOUND MONUMENT AS NOTED
- = ESTABLISHED POSITION AS PER HOOD RIVER COUNTY GPS COORDINATES
- ⊠ = ESTABLISHED POSITION AS PER HOOD RIVER COUNTY GPS COORDINATES
- ⊞ = ESTABLISHED POSITION AS PER HOOD RIVER COUNTY GPS COORDINATES
- ⊞ = FOUND 1/4 COR AS NOTED
- ⊞ = FOUND SEC COR AS NOTED
- ⊞ = COORDINATES ARE OREGON NORTH ZONE NAD 83
- = FENCE

NARRATIVE OF SURVEY

THE PURPOSE OF THE SURVEY WAS TO LOCATE THE EXISTING AND PROPOSED NEW INDIAN CREEK TRAIL FROM THE END OF SEGMENT 3 TO THE BASE BALL PARKING LOT (SEGMENT 3A). IT WAS ALSO REQUESTED TO PROVIDE LEGAL DESCRIPTIONS FOR THE EASEMENTS REQUIRED. THE POSITION OF THE CORNERS OF SECTION 3 WERE ESTABLISHED USING EXISTING OREGON NORTH ZONE COORDINATES AS ESTABLISHED BY HOOD RIVER COUNTY USING GPS TECHNOLOGY. WE ESTABLISHED ADDITIONAL CONTROL POINTS USING GPS AS SHOWN ON THE PLAT. WE TIED TO THE NGS CONTROL STATION PONDER 2 AND HOOD RIVER COUNTY CONTROL STATION SURVEYOR TO VERIFY OUR WORK. THE REFERENCE SURVEYS USED TO ESTABLISH THE BOUNDARY OF OWNERSHIP IN THE AREA OF THE TRAIL ARE NOTED HEREIN. ALL MONUMENTS FOUND AND ESTABLISHED, ALONG WITH THE MEASURED BEARINGS AND DISTANCES AND OR COORDINATES ARE SHOWN HEREIN.

REFERENCE SURVEY
SURVEY BY KLEIN & ASSOC
CS #2003 005

FILED

JUN 16 2003
Ronald Lohr
COUNTY CLERK

RIGHT OF WAY

STATION	COMMENTS
174+74.98 TO 179+15.06	PROPOSED 20 FOOT RIGHT OF WAY HOOD RIVER SCHOOL DISTRICT
179+15.06 TO 186+43.24	PROPOSED 20 FOOT RIGHT OF WAY HOOD RIVER COUNTY

REGISTERED PROFESSIONAL LAND SURVEYOR

OREGON
JULY 17, 1970
ANTHONY C. KLEIN
932
Expires 6-30-2003



Klein & Assoc.

LAND SURVEYING
1412 13th STREET
Hood River, Oregon 97031
Tele: (541)386-3322
DATE SURVEYED: MAY 2003
JOB NO: 03022

SURVEY FOR THE HOOD RIVER VALLEY PARKS & RECREATION DISTRICT	INDIAN CREEK TRAIL SEGMENT 3A	HR HIGH SCHOOL SCORE BOARD TO BASEBALL PARKING STA 174+74.98 TO 186+43.24
--	----------------------------------	--

REV: 6-16-03 1530

CS 2003 044