

FILED
 RECORDS AND ASSESSMENT
 HOOD RIVER CO.
 JUN 3 2 17 PM '03

FILED
 JUN 3 2003
 Correct copy of the ORIGINAL
 Dept of Recording & Assessment
 by *Christina Kallidias*

DEDICATION:

KNOW ALL PERSONS BY THESE PRESENCE THAT CHARLES S. & HAZEL D. BOWE, HUSBAND & WIFE, DO HEREBY MAKE, ESTABLISH & DECLARE THE PLAT MAP TO BE A TRUE & CORRECT MAP OF THE LAND OWNED & LAND OUT AS "HAZELVIEW'S THIRD ADDITION". SAID LAND BEING MORE PARTICULARLY DESCRIBED IN THE SURVEYOR'S CERTIFICATE HERETO ANNEXED AND CHARLES S. & HAZEL D. BOWE, ET UX., DO HEREBY DEDICATE TO THE USE OF THE PUBLIC AS PUBLIC WAYS FOREVER ALL STREETS, STORM WATER RETENTION OPEN SPACE, AND UTILITY EASEMENTS AS SHOWN ON THIS PLAT MAP.

Charles S. Bowe
 CHARLES S. BOWE
Hazel D. Bowe
 HAZEL D. BOWE

ACKNOWLEDGMENT:

BE IT REMEMBERED ON THIS 28 DAY OF May 2003 BEFORE ME, A NOTARY PUBLIC FOR THE STATE OF OREGON, PERSONALLY APPEARED CHARLES S. & HAZEL D. BOWE, KNOWN TO ME, WHO HAVING FIRST DULY SWORN, SAID THAT THEY DID SIGN THIS INSTRUMENT OF THEIR FREE AND VOLUNTARY ACT.

Charles S. Bowe
 CHARLES S. BOWE
Hazel D. Bowe
 HAZEL D. BOWE

APPROVALS:

THE PLAT OF HAZELVIEW'S THIRD ADDITION WAS EXAMINED AND APPROVED BY ME THIS 28 DAY OF May 2003
Paul J. Hark
 HOOD RIVER COUNTY COMMISSIONER CHAIRMAN

THE PLAT OF HAZELVIEW'S THIRD ADDITION WAS EXAMINED AND APPROVED BY ME THIS 29 DAY OF May 2003
Paul J. Hark
 HOOD RIVER COUNTY COMMISSIONER CHAIRMAN

THE PLAT OF HAZELVIEW'S THIRD ADDITION WAS EXAMINED AND APPROVED BY ME THIS 29 DAY OF May 2003
Paul J. Hark
 HOOD RIVER COUNTY COMMISSIONER CHAIRMAN

THE PLAT OF HAZELVIEW'S THIRD ADDITION WAS EXAMINED AND APPROVED BY ME THIS 29 DAY OF May 2003
Paul J. Hark
 HOOD RIVER COUNTY COMMISSIONER CHAIRMAN

THE PLAT OF HAZELVIEW'S THIRD ADDITION WAS EXAMINED AND APPROVED BY ME THIS 29 DAY OF May 2003
Paul J. Hark
 HOOD RIVER COUNTY COMMISSIONER CHAIRMAN

THE DIRECTOR OF RECORDS AND ASSESSMENTS, AND THE DIRECTOR OF BUDGET AND FINANCE AND TAX COLLECTOR, RESPECTIVELY, OF HOOD RIVER COUNTY, OREGON, HEREBY CERTIFY THAT WE HAVE EXAMINED THE PLAT OF "HAZELVIEW'S THIRD ADDITION" IN THE COUNTY OF HOOD RIVER AND THAT THE NAME ADOPTED FOR SAID PLAT IS A PROPER NAME AND NOT INCLUDED IN ANY OTHER SUBDIVISION IN HOOD RIVER COUNTY, AND FURTHER CERTIFY THAT ALL ASSESSMENTS DUE HEREON HAVE BEEN FULLY PAID AS REQUIRED BY LAW AND WE HEREBY APPROVE SAID PLAT.

David A. Brown
 HOOD RIVER COUNTY DIRECTOR OF BUDGET
 FINANCE & TAX COLLECTOR

Christina Kallidias
 HOOD RIVER COUNTY DIRECTOR OF RECORDS
 AND ASSESSMENTS

SURVEYOR'S CERTIFICATE:

I, ROY O. GAYLORD, REGISTERED LAND SURVEYOR FOR THE STATE OF OREGON, BEING FIRST DULY SWORN, DEPOSED AND SAY THAT I HAVE CORRECTLY SURVEYED AND MARKED WITH LEGAL MONUMENTS THE LAND REPRESENTED ON THE PLAT OF "HAZELVIEW'S THIRD ADDITION" HOOD RIVER COUNTY, STATE OF OREGON.

THE SUBDIVISION PARCEL:
 PARCEL 1 OF HOOD RIVER COUNTY PARTITION PLAT NO. 200308-P, RECORDED MARCH 26, 2003, HOOD RIVER COUNTY PARTITION RECORDS, LOCATED IN THE SOUTHWEST QUARTER OF SECTION 35, TOWNSHIP 3 NORTH, RANGE 10 EAST, W.M., COUNTY OF HOOD RIVER AND STATE OF OREGON.

EXCEPTING THEREFROM ANY LANDS WHICH MAY BE CONTAINED WITHIN EXISTING DEDICATED PUBLIC STREETS AND ROADS.

Roy O. Gaylord
 Roy O. Gaylord
 PLS 1815

FILED

JUN 9 2003
Paul J. Hark
 HOOD RIVER COUNTY COMMISSIONER CHAIRMAN

NOTES:
 PACIFIC POWER & LIGHT CO., BOOK 35 AT PAGE 12 IS A EASEMENT WITH NO SPECIFIC DESCRIPTION. FARMERS IRRIGATION DISTRICT HAS SEVERAL BOOK & PAGE EASEMENTS WHICH MAY AFFECT THE PLAT BUT WILL BE REVERSED & SATISFIED BY THE NEW 10' UNDERGROUND UTILITY EASEMENTS DESIGNATED ON THIS PLAT.

REFERENCES:
 REVISED TENTATIVE PLAT OF HAZELVIEW'S SECOND, THIRD & FOURTH ADDITIONS.
 HOOD RIVER COUNTY SURVEYORS OFFICE C.S.#94103.
 HOOD RIVER COUNTY SURVEYORS OFFICE C.S.#96201.
 HOOD RIVER COUNTY SURVEYORS OFFICE C.S.#91064.
 HOOD RIVER COUNTY SURVEYORS OFFICE C.S.#2001064.
 HOOD RIVER COUNTY SURVEYORS OFFICE C.S.#2001090.
 HOOD RIVER COUNTY SURVEYORS OFFICE C.S.#2002017.
 HOOD RIVER COUNTY SURVEYORS OFFICE C.S.#2002035.
 HOOD RIVER COUNTY SURVEYORS OFFICE C.S.#2003021.

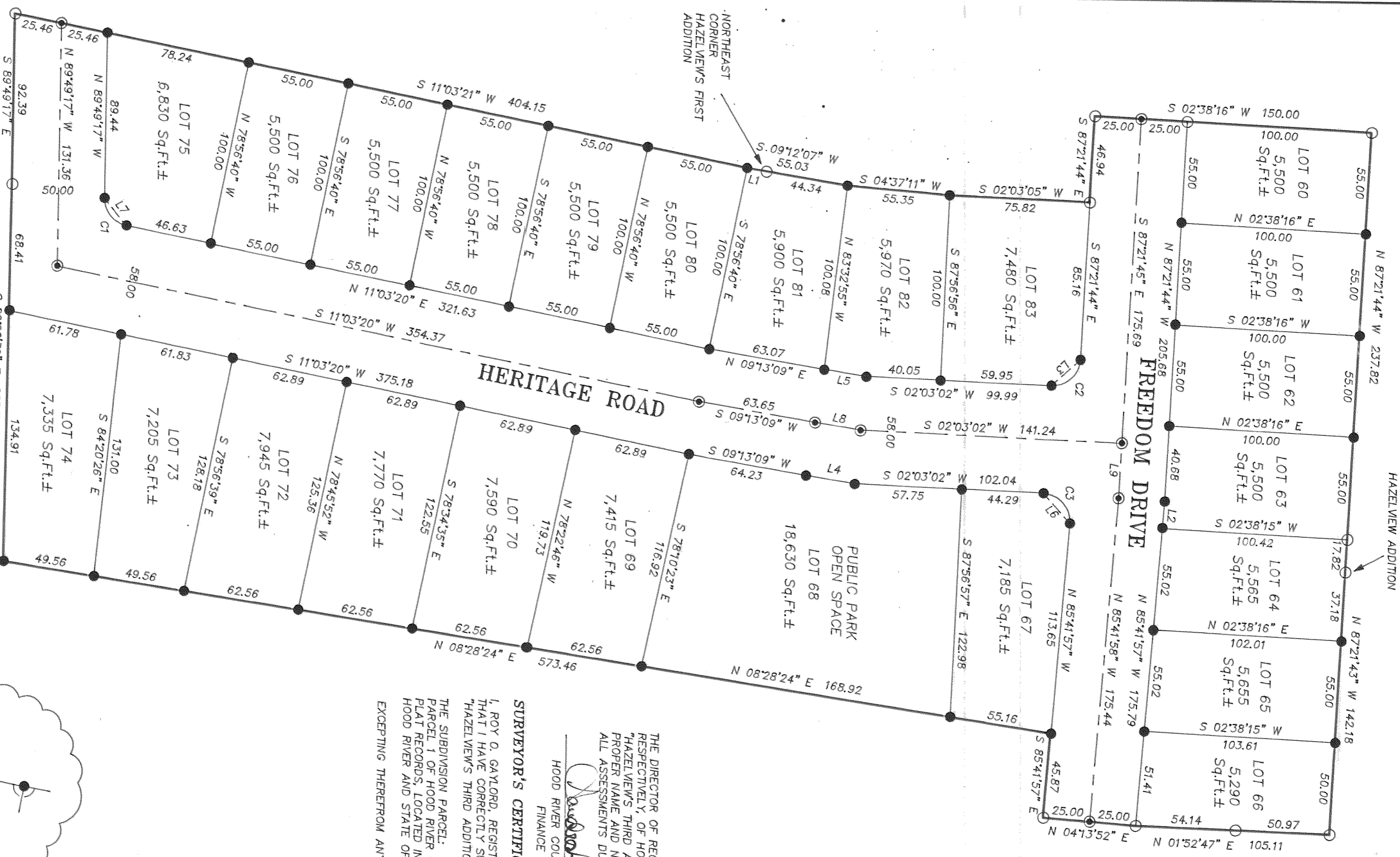
TYPICAL EASEMENT FOR UNDERGROUND UTILITIES. EASEMENT IS A 5 FOOT RADIUS CURVICULAR EASEMENT ABOUT THE IRON ROD SET FOR THE PROPERTY CORNER WHERE SHOWN, TO SCALE.

NARRATIVE:

FOUND NO MAJOR DISCREPANCIES

BASIS OF BEARING:
 1986 CITY OF HOOD RIVER DATUM.

REGISTERED PROFESSIONAL LAND SURVEYOR
Roy O. Gaylord
 JUL 13 1976
 ROY O. GAYLORD
 1815
 Expires June, 2003



LINE TABLE

LINE NO.	BEARING	DISTANCE
L1	S 09°12'07" W	10.69
L2	S 85°41'50" E	14.33
L3	S 42°39'19" E	21.10
L4	S 08°45'13" W	26.72
L5	S 08°45'13" W	23.08
L6	S 48°10'31" W	21.63
L7	S 50°37'03" E	19.11
L8	N 08°45'13" E	24.90
L9	N 87°21'45" W	29.63

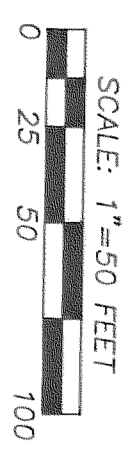
CURVE TABLE

NO.	DELTA RADIUS LENGTH	CHORD BRG.	CHORD
C1	79°07'06"	15.00	20.71
C2	89°24'54"	15.00	23.41
C3	92°14'58"	15.00	24.15

LOCATION OF SURVEY:
 A PORTION OF THE NORTHEAST QUARTER OF THE SOUTHWEST QUARTER AND A PORTION OF THE NORTHWEST QUARTER OF THE SOUTHEAST QUARTER OF SECTION 35, TOWNSHIP 3 NORTH, RANGE 10 EAST, W.M., HOOD RIVER COUNTY, OREGON.

HAZELVIEW'S THIRD ADDITION

PLAT OF
 HERITAGE ROAD
 FREEDOM DRIVE



OWNERS:
 CHARLES & HAZEL BOWE
 3549 INDIAN CLIFF DRIVE
 HOOD RIVER, OR. 97031
 PHONE & FAX: (541) 386-4531
 terr@orange.net
 3N - 10E - 35CA & 35DB

CS 2003 035