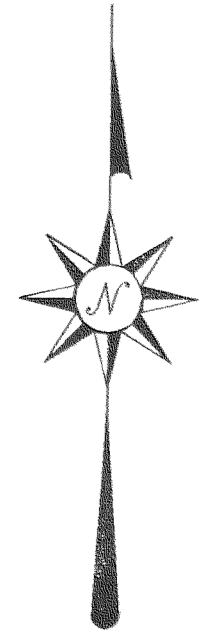
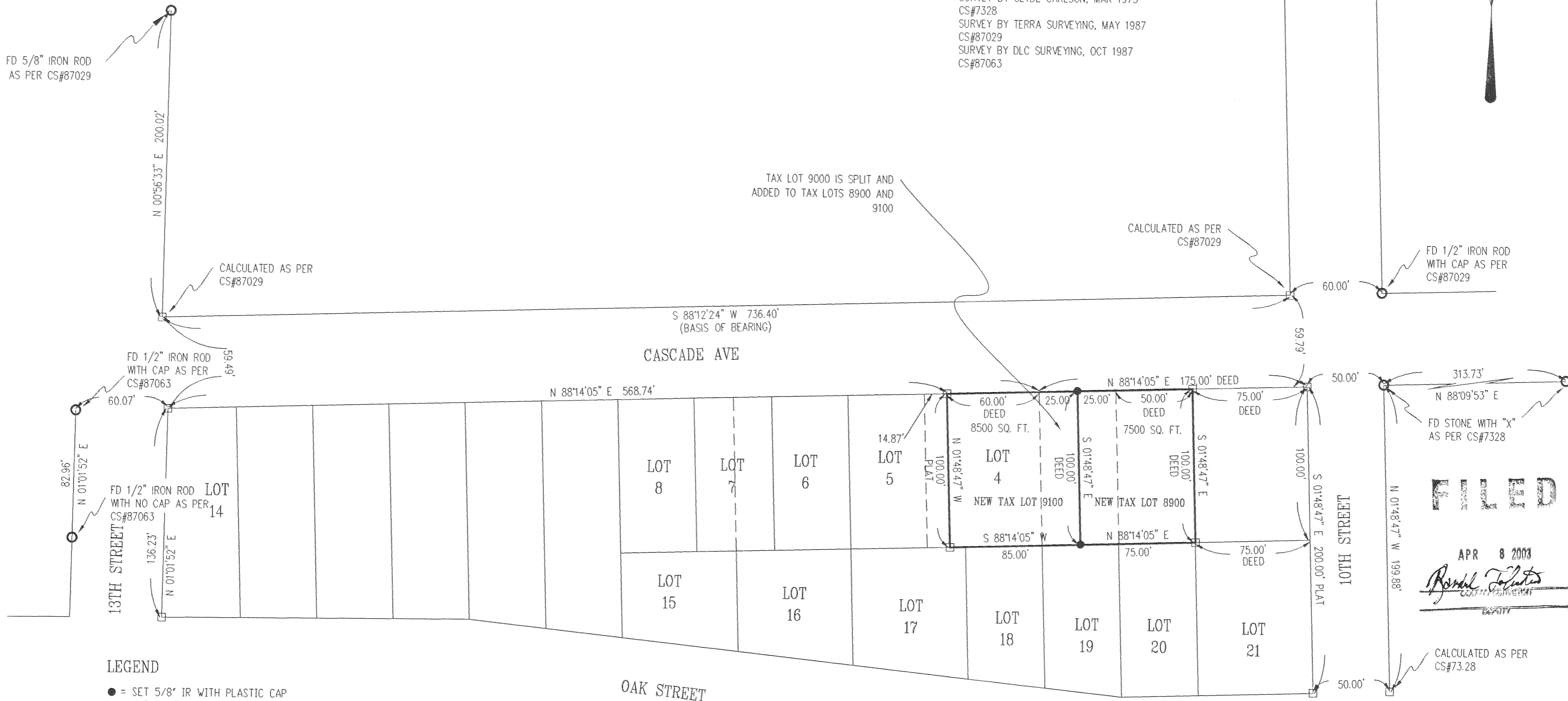


BOUNDARY ADJUSTMENT
IN
SW 1/4 OF THE SW 1/4, SEC 25, T 3 N, R 10 E, WM
ALSO IN BLOCK 2 OF RIVERVIEW PARK ADDITION
CITY OF HOOD RIVER, STATE OF OREGON
TAX LOT 8900,9000,9100 3N10 25CC



REFERENCE SURVEYS
SURVEY BY CLYDE CARLSON, MAR 1973
CS#7328
SURVEY BY TERRA SURVEYING, MAY 1987
CS#87029
SURVEY BY DLC SURVEYING, OCT 1987
CS#87063

TAX LOT 9000 IS SPLIT AND
ADDED TO TAX LOTS 8900 AND
9100



- LEGEND**
- = SET 5/8" IR WITH PLASTIC CAP MARKED OR #932 & WA #22098 EXCEPT AS NOTED
 - = FOUND MONUMENT AS NOTED
 - = CALCULATED CORNER AS NOTED
 - ⊠ = CALCULATED 1/4 COR AS NOTED
 - ⊞ = CALCULATED SEC COR AS NOTED
 - ⊞ = FOUND 1/4 COR AS NOTED
 - ⊞ = FOUND SEC COR AS NOTED

NARRATIVE OF SURVEY
THE PURPOSE OF THE SURVEY WAS TO DIVIDE TAX LOT 9000 (LOT 3) IN HALF AND ADD THE HALVES TO THE ADJOINING LOTS. IT WAS FOUND THAT LOTS 1, 2, AND 3, AS SHOWN ON THE ASSESSOR MAPS DOES NOT SHOW ON THE SUBDIVISION PLAT. THE SUBDIVISION PLAT FOR BLOCK 2 OF RIVERVIEW PARK ADDITION SHOWS A 175 BY 100 FOOT AREA NOT INCLUDED IN THE PLAT. THIS AREA IS WHERE THE ASSESSOR MAP SHOWS LOTS 1, 2, AND 3. THE LEGALS OF THE PARCELS IN THIS LOCATION ALSO SHOW THIS BY DESCRIBING THESE BY METES AND BOUNDS. I HELD THE MEETS AND BOUNDS DESCRIPTIONS FOR THOSE PARCELS AND THEN PROPORTIONED THE REMAINING LOTS EAST AND WEST. I HELD THE PLAT AND DEED CALLS NORTH AND SOUTH. ALL MONUMENTS FOUND AND ESTABLISHED ALONG WITH THE MEASURED BEARING AND DISTANCES ARE SHOWN HEREIN.

FILED
APR 8 2003
Ronald Tolutes
COUNTY CLERK
HOOD RIVER

REGISTERED
PROFESSIONAL
LAND SURVEYOR
Anthony C. Klein
OREGON
JULY 17, 1970
ANTHONY C. KLEIN
932
Expires 6-30-01

BOUNDARY ADJUSTMENT
FOR
DAVID AND LAURA DEVURN

Klein & Assoc.
LAND SURVEYING
1203 12TH STREET, SUITE H
HOOD RIVER, OREGON 97031
Tele: (541)386-3322
DATE SURVEYED: AUGUST 2001
JOB NO.: 01059