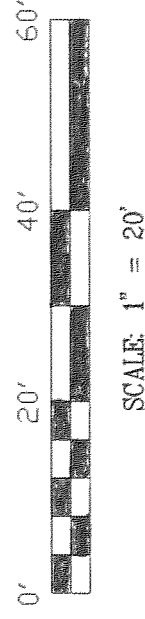
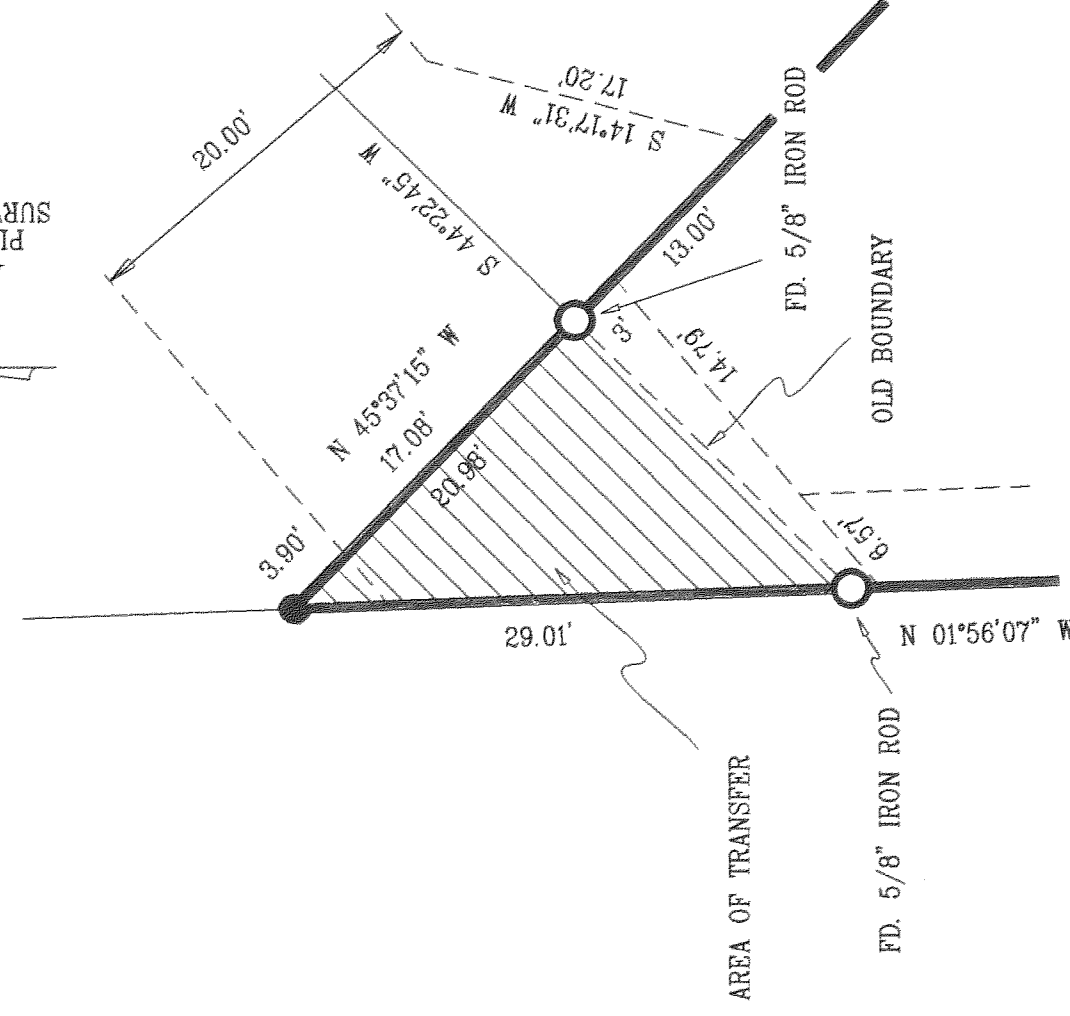


BOUNDARY LINE ADJUSTMENT
 IN THE NE 1/4, SEC. 12, T2N, R7E, WM
 CITY OF CASCADE LOCKS,
 HOOD RIVER COUNTY, OREGON



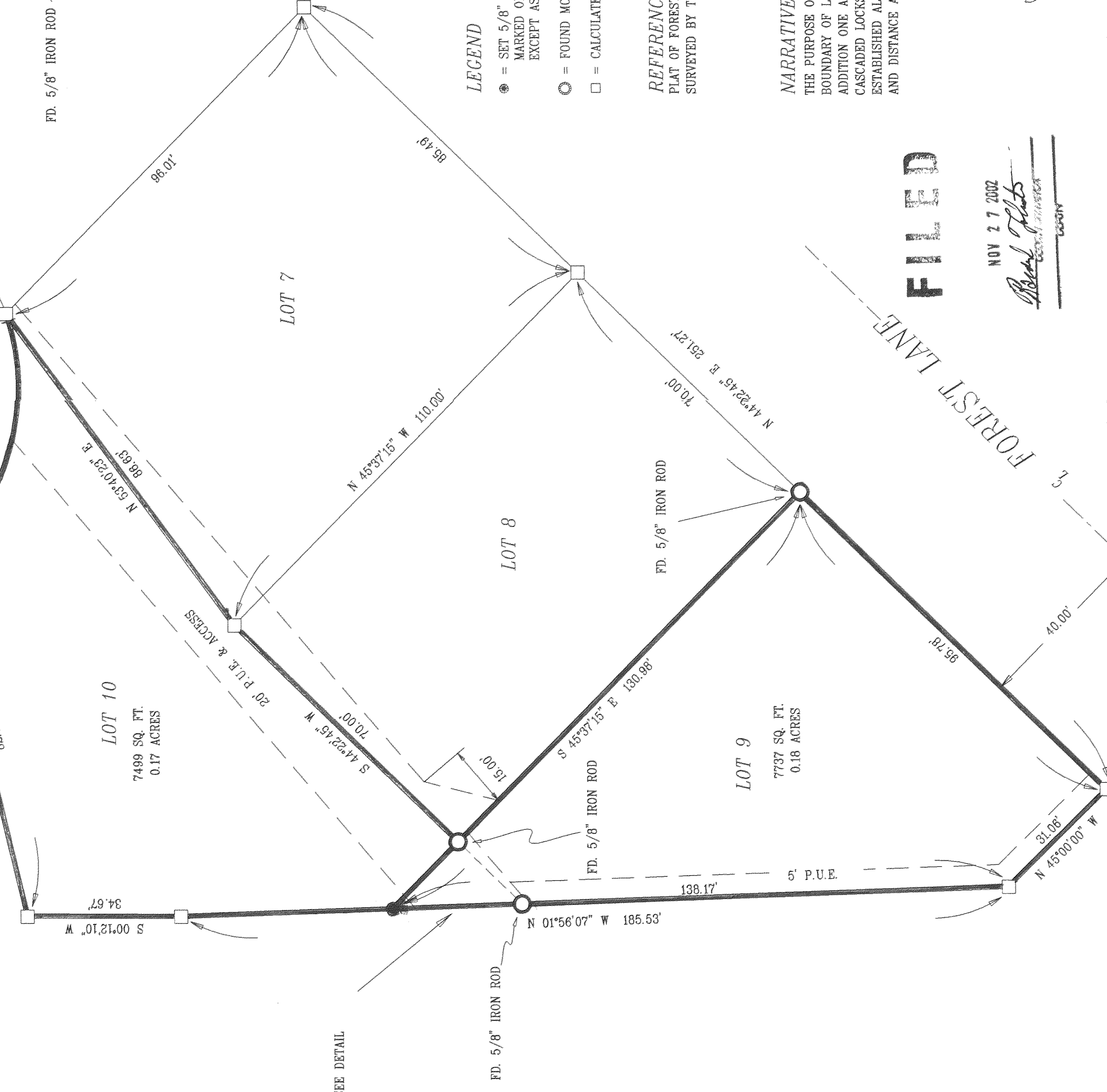
LOT AREAS		AREA OF TRANSFER	
LOT	NEW AREA	OLD AREA	210 SQ. FT.
LOT 9	7737 SQ. FT. 0.18 ACRES	7527 SQ. FT. 0.17 ACRES	
LOT 10	7499 SQ. FT. 0.17 ACRES	7709 SQ. FT. 0.18 ACRES	

BASIS OF BEARING
 PLAT OF FOREST LANE ADDITION ONE
 SURVEYED BY TENNESON ENG. CS #94004



DETAIL
 NOT TO SCALE:

SEE DETAIL



LEGEND

- = SET 5/8" IR WITH PLASTIC CAP MARKED OR #932 & WA #22098 EXCEPT AS NOTED
- = FOUND MONUMENT AS NOTED
- = CALCULATED CORNER AS NOTED

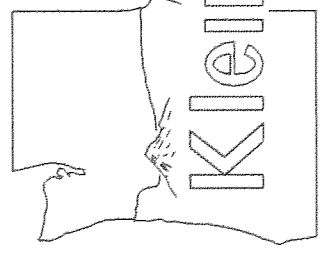
REFERENCE SURVEYS
 PLAT OF FOREST LANE ADDITION ONE
 SURVEYED BY TENNESON ENG. CS #94004

NARRATIVE OF SURVEY
 THE PURPOSE OF THIS SURVEY WAS TO ADJUST THE BOUNDARY OF LOTS 9 AND 10 OF FOREST LANE ADDITION ONE AS INSTRUCTED BY THE CITY OF CASCADE LOCKS. ALL MONUMENTS FOUND AND ESTABLISHED ALONG WITH THE MEASURED BEARING AND DISTANCE ARE SHOWN HEREIN.

FILED

NOV 27 2002
Paul J. Klein
 COUNTY CLERK

REGISTERED
 PROFESSIONAL
 LAND SURVEYOR
 OREGON
 JULY 17, 1970
 ANTHONY C. KLEIN
 932
 Expires 6-30-03



Klein & Assoc.
 LAND SURVEYING
 1412 13th Street
 Hood River, Oregon 97031
 Tele: (541)386-3322
 DATE SURVEYED: OCT. 2002
 JOB NO: 02044

BOUNDARY LINE ADJUSTMENT
 FOR
 CITY OF CASCADE LOCKS

P.O.B. AS PER
 FOREST LANE ADDITION

2N 7 12AD TL 309 AND 310

CS 2002 072

CS 2002 072

CS 2002 072

12/07: 11-15-02 1500