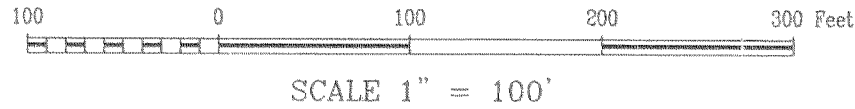


SURVEY IN THE  
NW 1/4, SEC 1, T 2 N, R 10 E, WM  
COUNTY OF HOOD RIVER, STATE OF OREGON



LEGEND

- = SET 5/8" IR WITH PLASTIC CAP MARKED OR #932 & WA #22098 EXCEPT AS NOTED
- = FOUND MONUMENT AS NOTED
- = CALCULATED CORNER AS NOTED
- ◀ = FOUND 1/4 COR AS NOTED

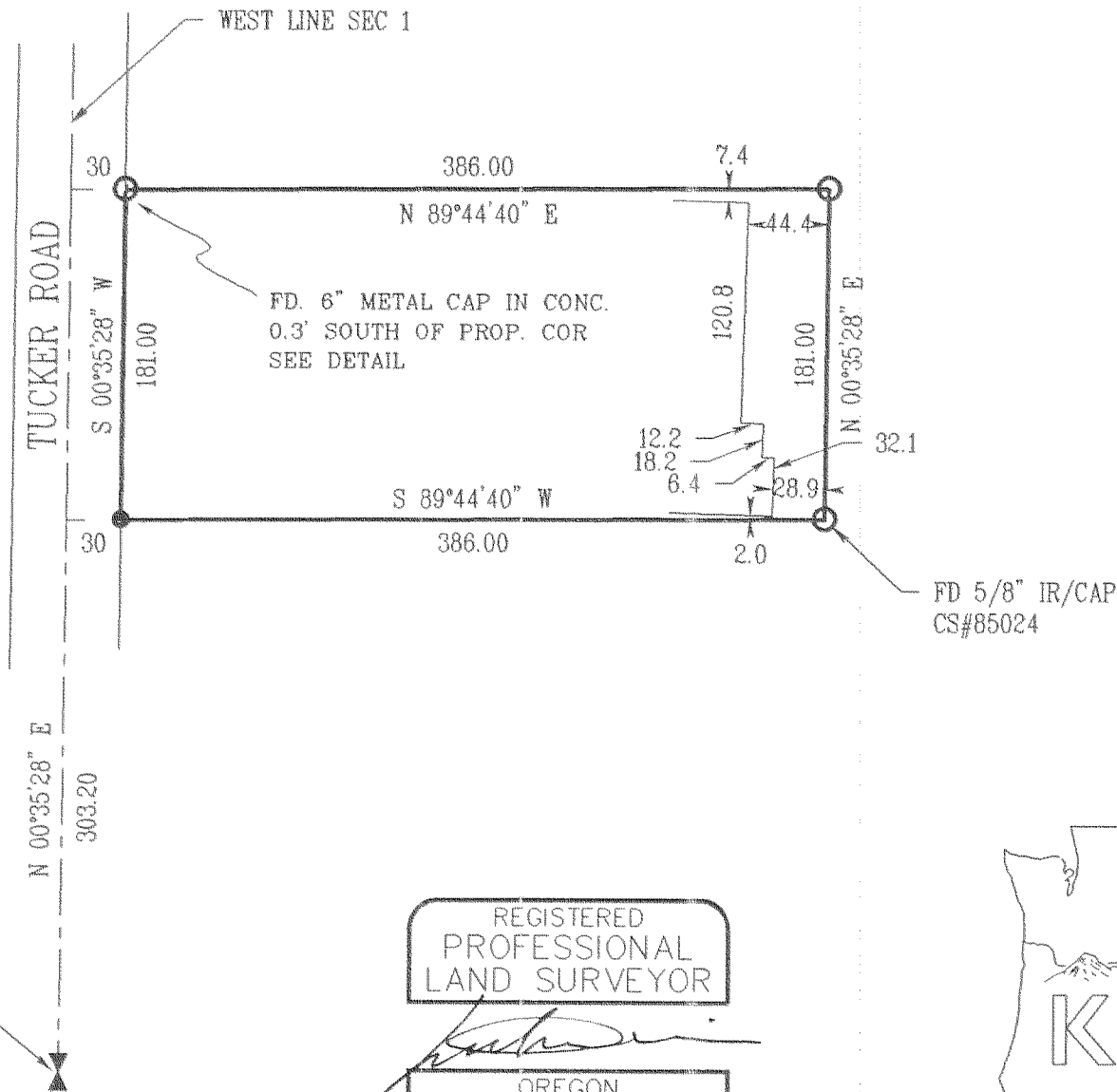
REFERENCE SURVEYS

SURVEY BY KLEIN & ASSOC. FEB 1985  
CS #85024  
  
SURVEY BY KLEIN & ASSOC.  
CS #93055

NARRATIVE OF SURVEY

THE PURPOSE WAS TO ESTABLISH THE WEST LINE OF THE PARCEL SHOWN HEREIN. ALL MONUMENTS FOUND AND ESTABLISHED ALONG WITH THE MEASURED BEARINGS AND DISTANCES ARE SHOWN HEREIN.

SURVEY FOR  
STEVE WESCHE



WEST 1/4 COR SEC 1  
FD BRASS CAP

REGISTERED  
PROFESSIONAL  
LAND SURVEYOR

OREGON  
JULY 17, 1970  
ANTHONY C. KLEIN  
932

EXPIRES 6-30-03



DETAIL

FILED

NOV 12 2002

*Paul Tolato*  
COUNTY SURVEYOR

DEPUTY



Klein & Assoc.

LAND SURVEYING  
1412 13TH STREET  
Hood River, Oregon 97031  
Tele: (541) 386-3322  
DATE SURVEYED: OCT. 2002  
JOB NO.: 02060

2N 10 1B 3703

CS 2002 071

BASIS OF BEARING  
SURVEY BY KLEIN & ASSOC.  
CS #93055