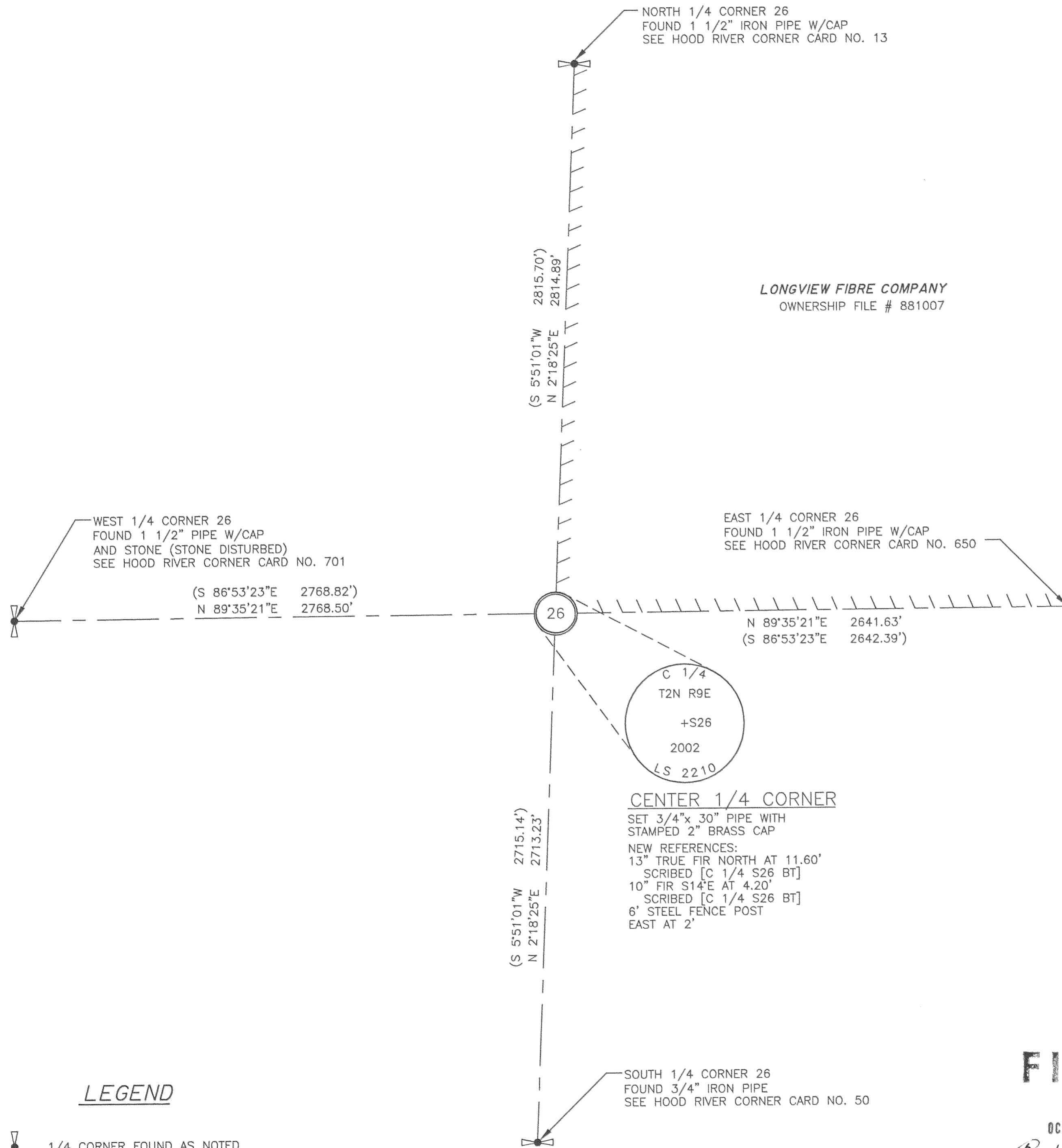


RECORD OF SURVEY
FOR
LONGVIEW FIBRE COMPANY
IN
SECTION 26, T 2 N, R 9 E, W.M.
HOOD RIVER, COUNTY



TRUE NORTH
MAGNETIC NORTH

BASIS OF BEARING
OREGON NORTH ZONE NAD83 (91)
GPS POINTS: PONDER 2 & DIAMOND

0' 400' 800' 1200'

SCALE: 1" = 400'
GRID DISTANCES SHOWN ON PLAT
SCALE FACTOR AT CENTER 1/4 = .999926555

NARRATIVE

THE PURPOSE OF THIS SURVEY WAS TO ESTABLISH THE SOUTH AND WEST LINES OF THE NORTHEAST QUARTER OF SECTION 26. THE SECTION WAS SURVEYED IN SEPTEMBER 1997 BY HOOD RIVER COUNTY, SURVEY NO. 97055, WHICH WAS ACCEPTED AND USED IN THIS SURVEY. THIS SURVEY WAS DONE WITH LEICA 399 GPS RECEIVERS AND A LEICA TC1105 TOTAL STATION. SECONDARY GPS CONTROL WAS ESTABLISHED NEAR THE PROJECT SITE USING GPS POINTS PONDER 2 AND DIAMOND. FROM THE SECONDARY POINTS, GPS CONTROL WAS SET NEAR THE NORTH, SOUTH AND EAST 1/4 CORNERS OF SECTION 26. THE EAST, SOUTH AND WEST 1/4 CORNERS OF SECTION 26 WERE THEN TIED BY TRAVERSE FROM GPS CONTROL. A TRAVERSE WAS RUN FROM GPS CONTROL TO THE NORTH 1/4 OF SECTION 26, THENCE SOUTH ALONG LINE TO A LOGGING ROAD AND CLOSED OUT ON THE GPS CONTROL. A TRAVERSE WAS THEN RUN FROM GPS CONTROL LEAVING SAID LOGGING ROAD SOUTH TO THE CALCULATED LOCATION OF THE CENTER 1/4 OF SECTION 26, THENCE EAST ALONG LINE AND CLOSED OUT ON GPS CONTROL SET NEAR THE EAST 1/4 OF SECTION 26. THE CENTER 1/4 CORNER OF SECTION 26 WAS SET FROM THE ADJUSTED TRAVERSE POINTS AND REFERENCED AS NOTED.

THIS MAP CORRECTLY REPRESENTS A SURVEY MADE BY ME AT THE REQUEST OF LONGVIEW FIBRE COMPANY IN MAY 2002

FILED

OCT 16 2002
George J. Ford
COUNTY SURVEYOR
DEPUTY

GEORGE J. FORD
CERTIFICATE NO. 2210

REGISTERED
PROFESSIONAL
LAND SURVEYOR

George J. Ford
10-10-02

LONGVIEW FIBRE COMPANY
P.O. BOX 667
LONGVIEW, WA 98632

OREGON
JULY 17, 1986
GEORGE J. FORD
#2210

EXPIRATION DATE: 12/31/02

LEGEND

1/4 CORNER FOUND AS NOTED

() RECORD BEARING/DISTANCE PREVIOUS SURVEY

LINE MARKED WITH 1/2"x 60" FIBERGLASS RODS. RED AND WHITE FLAGGING ON LINE BETWEEN RODS. TREES ALONG LINE PAINTED WITH BLUE PAINT.

NOTE:
NEW REFERENCES HAVE AN 8" SPIKE AT BASE OF SCRIBE WITH LONGVIEW FIBRE COMPANY LOCATION TAG ABOVE SCRIBE. ALL ORIENTED TOWARD THE MONUMENT. DISTANCES MEASURED TO SPIKE. BEARINGS TO REFERENCES TAKEN WITH HAND COMPASS HAVING DECLINATION OF 21' E.

DRAWING BY: NATHAN WOODWARD

DATE: MAY 28, 2002

2N 9 26 1400 RMA: 10-14-02 1600

CS 2002 065