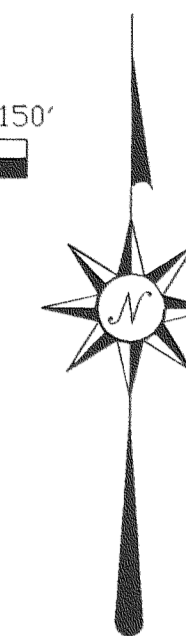
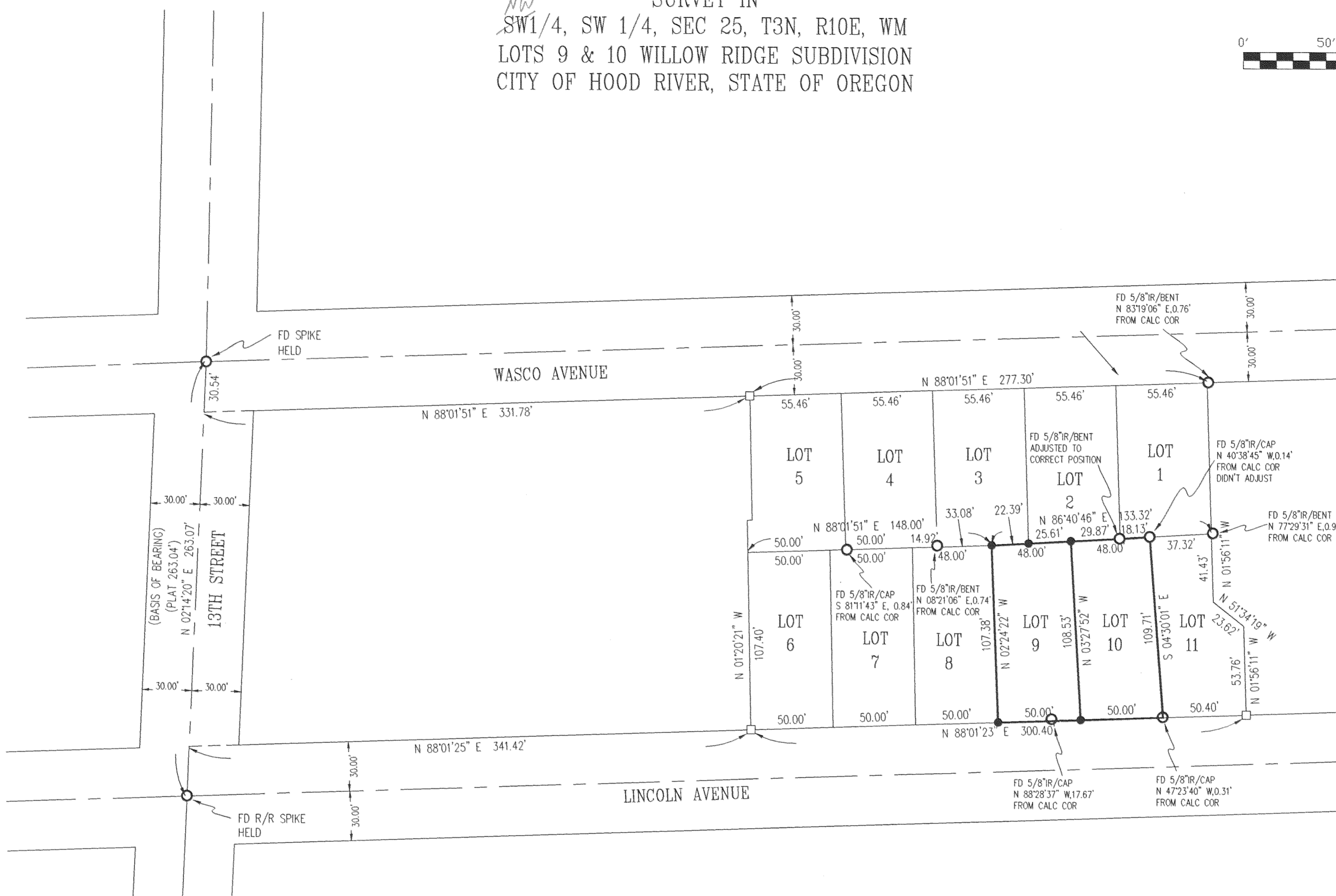


NW  
SURVEY IN  
SW 1/4, SW 1/4, SEC 25, T3N, R10E, WM  
LOTS 9 & 10 WILLOW RIDGE SUBDIVISION  
CITY OF HOOD RIVER, STATE OF OREGON



BASIS OF BEARING  
BETWEEN THE FD R/R SPIKES  
ON 13TH STREET



**LEGEND**

- = SET 5/8" IR WITH PLASTIC CAP  
MARKED DR #932 & WA #22098  
EXCEPT AS NOTED
- = FOUND MONUMENT AS NOTED
- = CALCULATED CORNER AS WILLOW RIDGE SUBDIVISION

**REFERENCE SURVEYS**

PLAT OF WILLOW RIDGE SUBDIVISION  
FILED MAY 6, 1994  
HOOD RIVER COUNTY RECORDS

**NARRATIVE OF SURVEY**

THE PURPOSE OF THIS SURVEY WAS TO RELOCATE THE EXTERIOR MONUMENTS OF THE ABOVE SHOWN LOTS. IT WAS FOUND THAT SEVERAL OF THE MONUMENTS FOUND WERE OUT OF POSITION. THIS APPEARED TO BE CAUSED BY THE GRADING WORK THAT HAS TAKEN PLACE DURING CONSTRUCTION OF THE IMPROVEMENTS. ON MONUMENT WAS WAY OUT OF POSITION AND NO RECORD OF ANY MONUMENT BEING SET AT THAT LOCATION. I USED THE RAILROAD SPIKES ALONG 13TH STREET TO RELOCATE THE MONUMENTS SET AND TO SHOW WHERE THE FOUND MONUMENTS ARE IN RELATION TO THE CALCULATED POSITION. ALL MONUMENTS FOUND AND ESTABLISHED ALONG WITH THE MEASURED BEARING AND DISTANCE ARE SHOWN HEREIN.

**FILED**

AUG 21 2002

*Ronald Roberts*  
COUNTY CLERK

REGISTERED  
PROFESSIONAL  
LAND SURVEYOR

OREGON  
JULY 17, 1970  
ANTHONY C. KLEIN  
932

Expires 6-30-2003



**Klein & Assoc.**

LAND SURVEYING  
1412 13th STREET  
Hood River, Oregon 97031  
Tele: (541)386-3322  
DATE SURVEYED: AUGUST 14, 2002  
JOB NO: 02048

SURVEY FOR  
PETER FOTHERINGHAM

TAX LOTS 3N 10E 2502, 1912 & 1913

Revised 8-19-02 1530 CS 2002 061