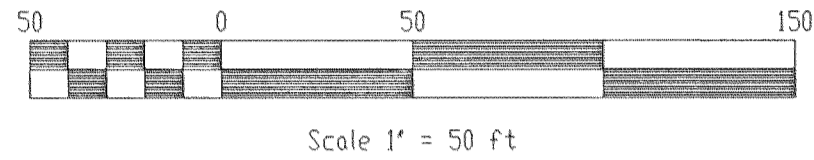
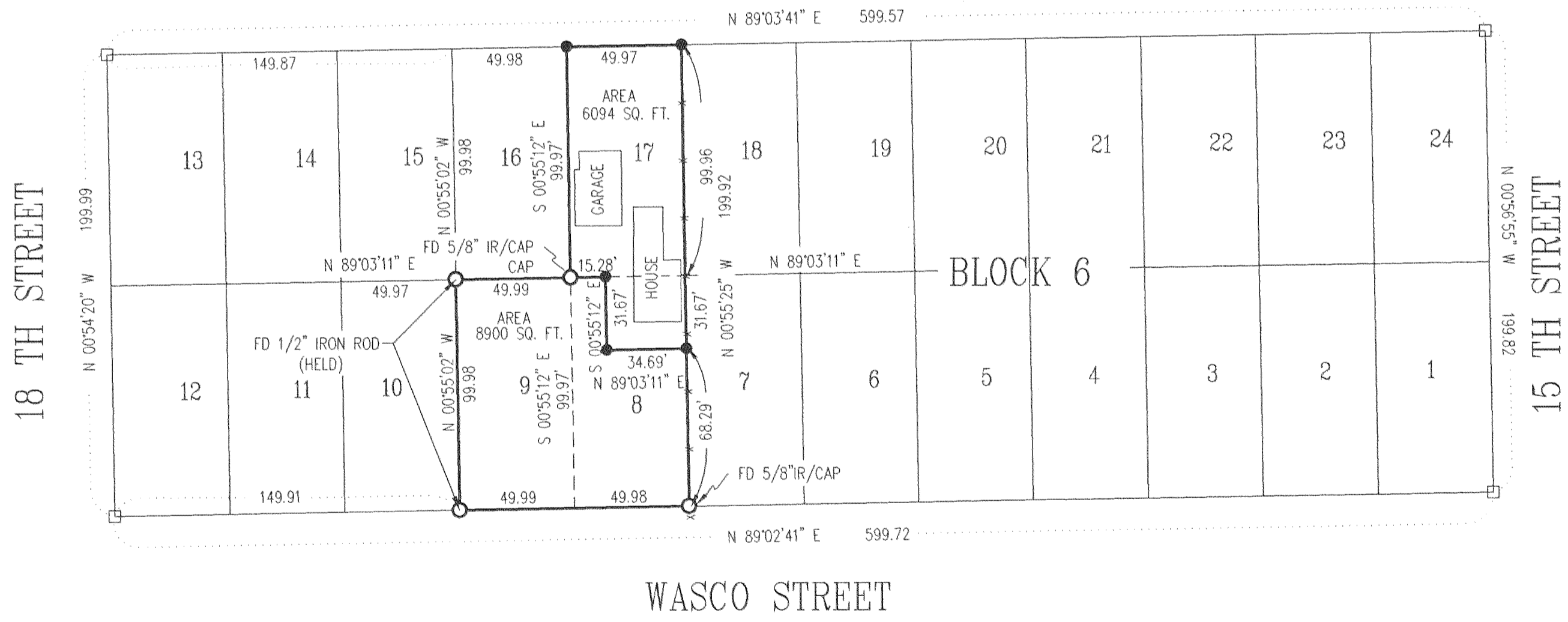
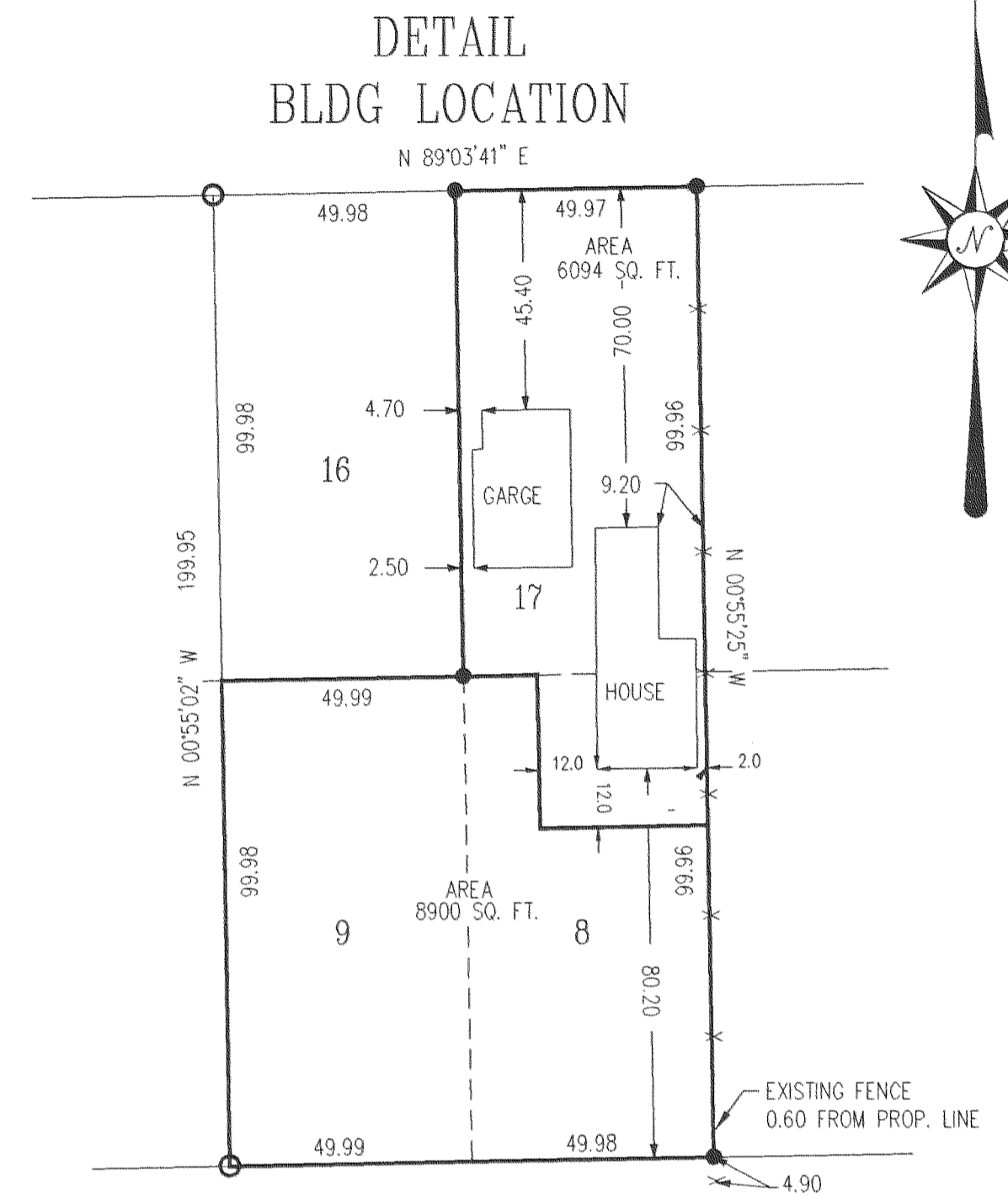


BOUNDARY ADJUSTMENT
 SE 1/4, SEC. 26, T 3 N, R 10 E, WM
 LOTS 8,9 & 16,17 OF BLOCK 6
 OF PLATTED AMENDED PLAT OF IDLEWILD ADDITION
 TO THE CITY OF HOOD RIVER, STATE OF OREGON



LEGEND

- = SET 5/8" IR WITH PLASTIC CAP MARKED OR #932 & WA #22098 EXCEPT AS NOTED
- = FOUND MONUMENT AS NOTED
- = CALCULATED CORNER AS NOTED



WASCO STREET
 NOT TO SCALE

FILED

JUL 23 2002
Ronald L. Latta
 COUNTY CLERK
 DEPUTY

REGISTERED
 PROFESSIONAL
 LAND SURVEYOR

OREGON
 JULY 17, 1970
 ANTHONY C. KLEIN
 932
 EXPIRES 6-30-03



Klein & Assoc.
 LAND SURVEYING
 1412 13TH STREET
 Hood River, Oregon 97031
 Tele: (541)386-3322
 DATE SURVEYED: JUNE 2002
 JOB NO: 02025

REFERENCE SURVEYS
 SURVEY BY KLEIN & ASSOCIATES
 JULY, 1997 FOR ERIC IHDE

NARRATIVE OF SURVEY
 THE PURPOSE OF THE SURVEY WAS TO ADJUST
 THE BOUNDARY OF LOTS 8, 9 & 17 SHOWN
 ABOVE. ALL MONUMENTS FOUND AND ESTABLISHED
 ALONG WITH THE MEASURED BEARINGS AND
 DISTANCES ARE SHOWN HEREIN.

BOUNDARY ADJUSTMENT
 FOR
 ERIC IHDE