

JUL 19 1 46 PM '02

File Number 200218 P  
Instrument received on the 19<sup>th</sup> day of  
July, 2002 at 1:46 P.M.

*Cindy J. Julek* - Deputy Clerk  
Hood River County Director of Records  
and assessments.

SURVEYOR'S CERTIFICATE

I, Roy O. Gaylord,  
being first duly sworn, depose and say that I have  
correctly surveyed and marked with proper  
monuments the lands represented on this Townhouse  
Plat, the boundaries being described as adjusted  
Parcel 6 of the boundary line adjustment survey  
filed for record at the County Surveyor's office  
as County Surveyor's file # 2001 016, recorded  
March 12, 2001.

REGISTERED  
PROFESSIONAL  
LAND SURVEYOR

*Roy O. Gaylord*

OREGON  
JULY 13, 1979  
ROY O. GAYLORD  
1815

Expires: June, 2003

ACKNOWLEDGMENTS

We the owner(s) of the land shown herein, hereby  
declare that this division of land has been made with  
our free consent and in accordance with our desires.

*R. A. Long* 6/06/02  
OWNER DATE

STATE OF OREGON }  
COUNTY OF HOOD RIVER } s.s.  
Subscribed and sworn to before me on this  
6<sup>th</sup> day of JUNE, 2002

by *Molly M. Searcy*  
PRINT NAME MOLLY M. SEARCY

NOTARY PUBLIC - OREGON  
COMMISSION NO. 353203  
MY COMMISSION EXPIRES 1/3/06  
(Seal)

APPROVALS

I hereby certify that all taxes and assessments due  
hereon have been fully paid as required by law.

*Audra A. Rowley*  
Hood River County Director of Budget and  
Finance

I hereby certify this partition was ex-  
amined and approved as of this 10<sup>th</sup>  
day of July, 2002.

*Ronald J. Tait*  
Hood River County Surveyor

I hereby certify this partition was ex-  
amined and approved as of this 13<sup>th</sup>  
day of June, 2002.

Planning File Number 2000-52  
*Cynthia Walbridge*  
City of Hood River Planning Director

NARRATIVE:

THE PURPOSE OF THIS SURVEY IS TO PARTITION TAX  
LOT 2400 WHICH WAS CREATED BY HOOD RIVER  
COUNTY SURVEYORS OFFICE C.S.#2001016, INTO 2 NEW  
PARCELS DIVIDED BY THE COMMON WALLS OF THE  
PROPOSED TOWNHOUSE CONSTRUCTION.

SEE THE FACE OF THE PLAT FOR FURTHER DETAILS.

LOCATION OF SURVEY:

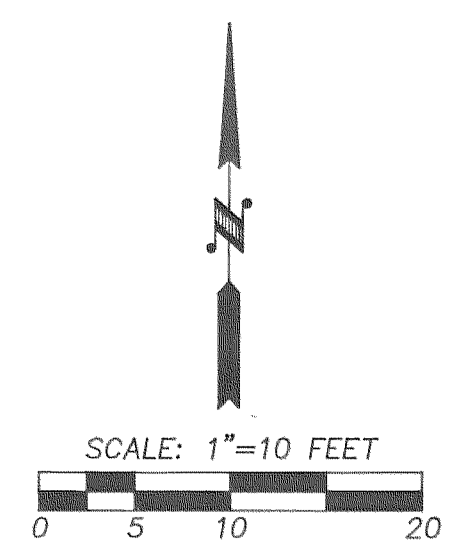
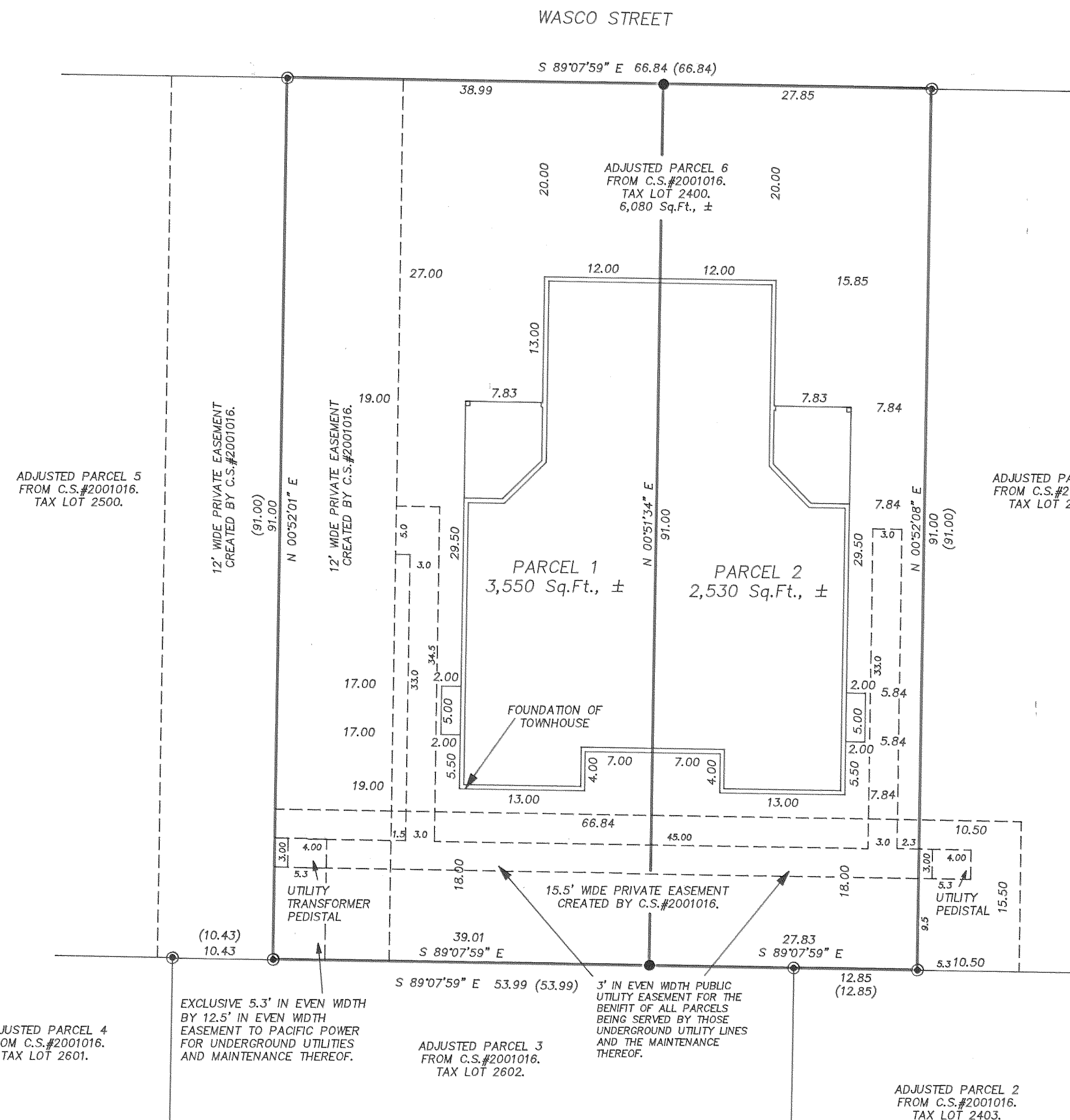
PORTION OF BLOCK 7, OF THE AMENDED PLAT OF  
IDLEWILDE ADDITION TO HOOD RIVER, SECTION 26,  
TOWNSHIP 3 NORTH, RANGE 10 EAST, WILLAMETTE  
MERIDIAN, CITY OF HOOD RIVER, HOOD RIVER  
COUNTY, OREGON.

REFERENCES:

HOOD RIVER COUNTY DEED MICROFILM #890796.  
HOOD RIVER COUNTY DEED MICROFILM #911512.  
HOOD RIVER COUNTY DEED MICROFILM #982542.  
HOOD RIVER COUNTY DEED MICROFILM #982547.  
HOOD RIVER COUNTY SURVEYORS OFFICE C.S.#2001016.

BASIS OF BEARING:

1986 CITY OF HOOD RIVER DATUM.



- LEGEND:
- SET 5/8" X 30" IRON ROD WITH PLASTIC CAP
- FOUND MONUMENT OF RECORD
- ⊙ FOUND TERRA SURVEYING 5/8" X 30" IRON ROD WITH PLASTIC CAP.
- CALCULATED, NOT FOUND OR SET
- ( ) DEED OR PLAT CALL

TERRA SURVEYING

DATE: JUNE, 2002  
SCALE: 1" = 10'  
PROJECT: 201012PLAT2  
ASSESSORS MAP: 3N-10-26DA  
P.O. BOX 617  
HOOD RIVER, OREGON 97031  
PHONE & FAX: (541) 386-4531  
terra@gorge.net

FILED

JUL 22 2002

*Ronald J. Tait*  
DEPUTY

TOWNHOUSE PARTITION PLAT  
for  
HOOD RIVER WINDS TOWNHOMES

JUL 19 2002  
Certified to be a true and  
correct copy of the ORIGINAL  
Dept of Records & Assessment  
by *Deputy*

Plat and 17-21-02 1103

CS 2002 048