

JUL 19 1 46 PM '02

NARRATIVE:

THE PURPOSE OF THIS SURVEY IS TO PARTITION TAX LOT 2402 WHICH WAS CREATED BY HOOD RIVER COUNTY SURVEYORS OFFICE C.S.#2001016, INTO 2 NEW PARCELS DIVIDED BY THE COMMON WALLS OF THE PROPOSED TOWNHOUSE CONSTRUCTION.

SEE THE FACE OF THE PLAT FOR FURTHER DETAILS.

LOCATION OF SURVEY:

PORTION OF BLOCK 7, OF THE AMENDED PLAT OF IDLEWILDE ADDITION TO HOOD RIVER, SECTION 26, TOWNSHIP 3 NORTH, RANGE 10 EAST, WILLAMETTE MERIDIAN, CITY OF HOOD RIVER, HOOD RIVER COUNTY, OREGON.

REFERENCES:

HOOD RIVER COUNTY DEED MICROFILM #890796.
HOOD RIVER COUNTY DEED MICROFILM #911512.
HOOD RIVER COUNTY DEED MICROFILM #982542.
HOOD RIVER COUNTY DEED MICROFILM #982547.
HOOD RIVER COUNTY SURVEYORS OFFICE C.S.#2001016.

BASIS OF BEARING:

1986 CITY OF HOOD RIVER DATUM.

File Number 200217P
Instrument received on the 19th day of July, 2002 at 1:46 P.M.

Cindy J. Julek - Deputy Clerk
Hood River County Director of Records and Assessments.

SURVEYOR'S CERTIFICATE

I, Roy O. Gaylor,
being first duly sworn, depose and say that I have correctly surveyed and marked with proper monuments the lands represented on this Townhouse Plat, the boundaries being described as adjusted Parcel 1 of the boundary line adjustment survey filed for record at the County Surveyor's office as County Surveyor's file # 2001 016, recorded March 12, 2001.

REGISTERED
PROFESSIONAL
LAND SURVEYOR

Roy O. Gaylor

OREGON
JULY 13, 1979
ROY O. GAYLORD
1815

Expires: June, 2003

ACKNOWLEDGMENTS

We the owner(s) of the land shown herein, hereby declare that this division of land has been made with our free consent and in accordance with our desires.

B. A. ... 6/06/02
OWNER DATE

STATE OF OREGON }
COUNTY OF HOOD RIVER } s.s.
Subscribed and sworn to before me on this 6th day of June, 2002

by *Molly M. Seary*
PRINT NAME MOLLY M. SEARY

NOTARY PUBLIC - OREGON
COMMISSION NO. 353203

MY COMMISSION EXPIRES 1/2/06
(Seal)

APPROVALS

I hereby certify that all taxes and assessments due hereon have been fully paid as required by law.

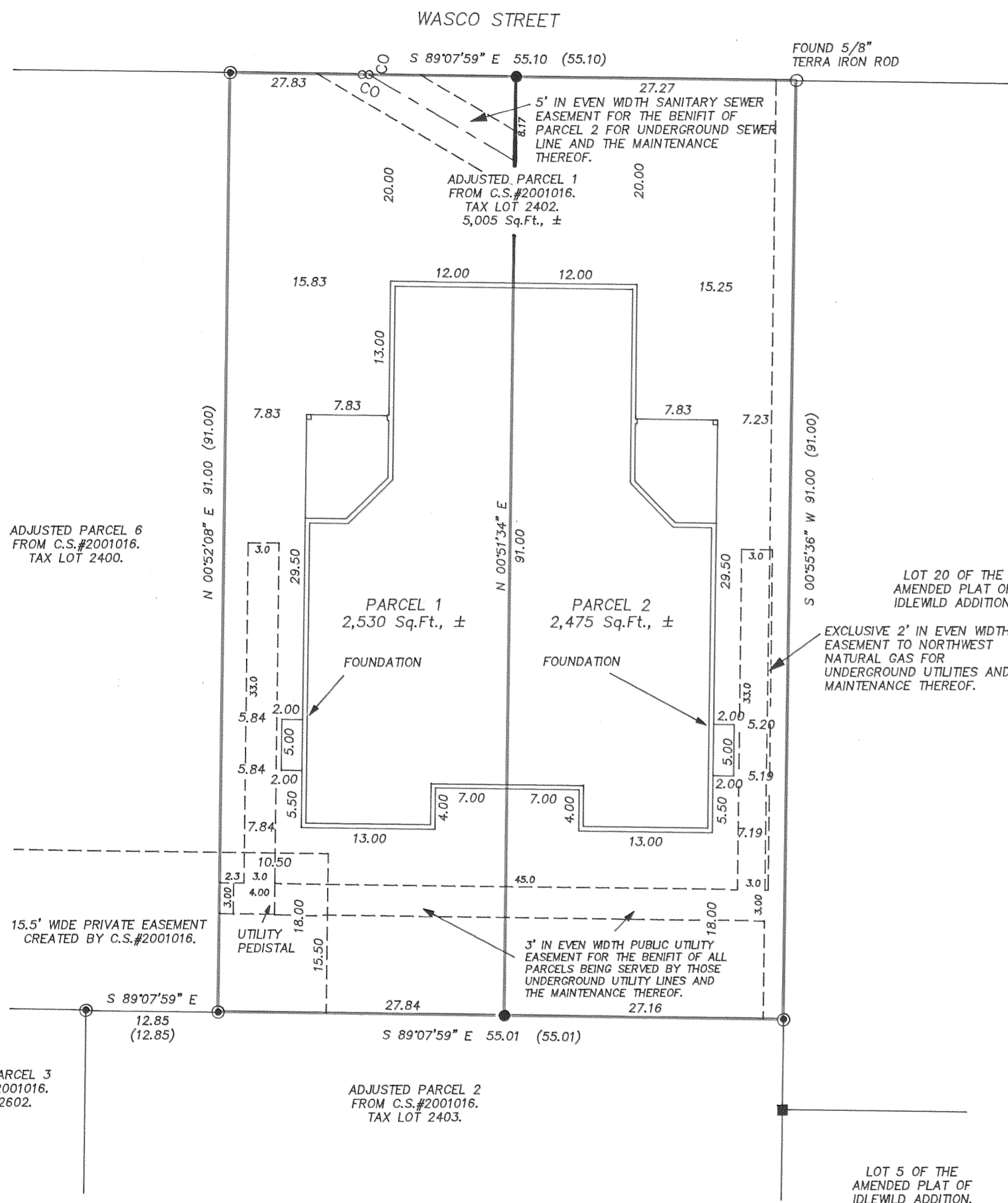
Sharon ...
Hood River County Director of Budget and Finance

I hereby certify this partition was examined and approved as of this 10th day of July, 2002.

Ronald ...
Hood River County Surveyor

I hereby certify this partition was examined and approved as of this 13th day of June, 2002.

Planning File Number 2000-53
Cynthia Walbridge
City of Hood River Planning Director



LEGEND:

- SET 5/8" X 30" IRON ROD WITH PLASTIC CAP
- FOUND MONUMENT OF RECORD
- ⊙ FOUND TERRA SURVEYING 5/8" X 30" IRON ROD WITH PLASTIC CAP.
- CALCULATED, NOT FOUND OR SET
- () DEED OR PLAT CALL
- CO SANITARY SEWER CLEANOUT

FILED

JUL 22 2002

Ronald ...
DEPUTY

TERRA SURVEYING

DATE: JUNE, 2002
SCALE: 1" = 10'
PROJECT: 201012PLAT3
ASSESSORS MAP: 3N-10-26DA

P.O. BOX 617
HOOD RIVER, OREGON 97031
PHONE & FAX: (541) 386-4531
terra@gorge.net

TOWNHOUSE PARTITION PLAT
for
HOOD RIVER WINDS TOWNHOMES

JUL 19 2002
Certified to be a true and correct copy of the ORIGINAL
Deputy of Records & Assessment
by *Cindy J. Julek* Deputy

CSA: 2-22-02 1400

CS 2002 047