

JUN 5 1 41 PM '02

THE DIRECTOR OF RECORDS AND ASSESSMENTS, AND THE DIRECTOR OF BUDGET AND FINANCE AND TAX COLLECTOR, RESPECTIVELY, OF HOOD RIVER COUNTY, OREGON, HEREBY CERTIFY THAT WE HAVE EXAMINED THE PLAT OF "HAZELVIEW'S SECOND ADDITION" IN THE COUNTY OF HOOD RIVER AND THAT THE NAME ADOPTED FOR SAID PLAT IS A PROPER NAME AND NOT INCLUDED IN ANY OTHER SUBDIVISION IN HOOD RIVER COUNTY, AND FURTHER CERTIFY THAT ALL ASSESSMENTS DUE HEREON HAVE BEEN FULLY PAID AS REQUIRED BY LAW AND WE HEREBY APPROVE SAID PLAT.

*Roy O. Gaylord*  
HOOD RIVER COUNTY DIRECTOR OF BUDGET  
FINANCE & TAX COLLECTOR  
*Charles S. Bowe*  
HOOD RIVER COUNTY DIRECTOR OF  
RECORDS AND ASSESSMENTS.

FILED FOR RECORD THIS 5th DAY  
OF June, 2002 at 1:41 PM  
INSTRUMENT NO. 20022711

P.I. CENTER LINE  
BELMONT ROAD  
FOUND 5/8" IRON ROD  
OF RECORD

LINE TABLE with columns NO., BEARING, DISTANCE. Lists lines L12 through L54 with bearings and distances.

LINE TABLE with columns NO., BEARING, DISTANCE. Lists lines L55 through L79 with bearings and distances.

CURVE TABLE with columns NO., DELTA, RADIUS, LENGTH. Lists curves C1 through C22 with curve data.

COVENANTS AND RESTRICTIONS:  
THE DECLARATION OF COVENANTS, CONDITIONS AND RESTRICTIONS FOR "HAZELVIEW'S SECOND ADDITION" TO BE FILED UNDER SEPARATE DOCUMENTS AS RECORDER'S FILE FEE No. 20013450, RECORDED AUGUST 13, 2001, HOOD RIVER COUNTY DEED RECORDS.

LOCATION OF SURVEY:  
A PORTION OF THE NORTHEAST QUARTER OF THE SOUTHWEST QUARTER AND A PORTION OF THE NORTHWEST QUARTER OF THE SOUTHWEST QUARTER OF SECTION 35, TOWNSHIP 3 NORTH, RANGE 10 EAST, W.M., HOOD RIVER COUNTY, OREGON.

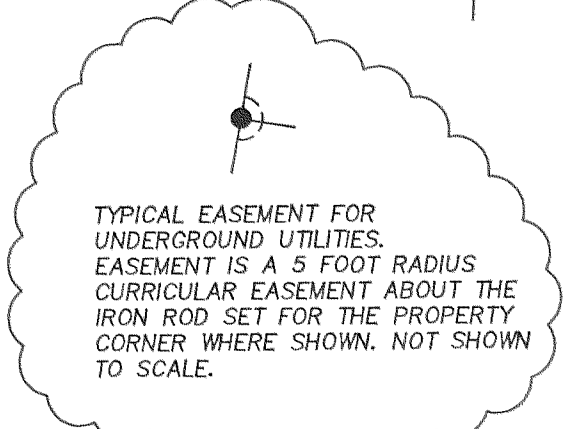
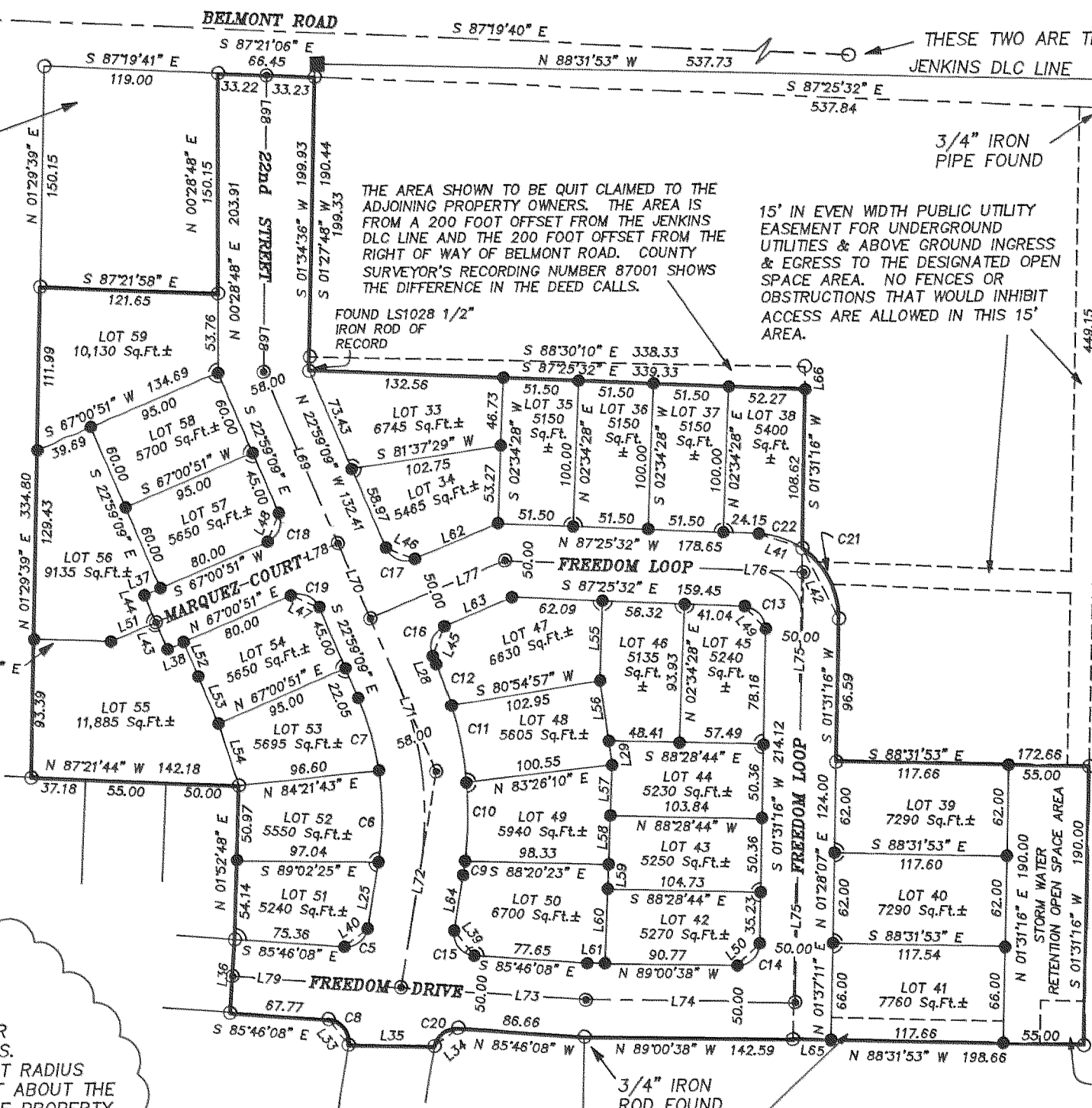
FILED

JUN 05 2002  
Certified to be a true and correct copy of the ORIGINAL  
*Roy O. Gaylord*  
COUNTY CLERK

APPROVALS:  
THE PLAT OF HAZELVIEW'S SECOND ADDITION WAS EXAMINED AND APPROVED BY ME THIS 31st DAY OF MAY, 2002  
*Charles S. Bowe*  
HOOD RIVER COUNTY SURVEYOR  
THE PLAT OF HAZELVIEW'S SECOND ADDITION WAS EXAMINED AND APPROVED BY ME THIS 03 DAY OF JUNE, 2002  
*Mark A. Jones*  
HOOD RIVER CITY DIRECTOR OF PUBLIC WORKS & ENGINEERING  
THE PLAT OF HAZELVIEW'S SECOND ADDITION WAS EXAMINED AND APPROVED BY ME THIS 03 DAY OF JUNE, 2002  
*Deann W. Wells*  
FIRE DEPARTMENT, CITY OF HOOD RIVER  
THE PLAT OF HAZELVIEW'S SECOND ADDITION WAS EXAMINED AND APPROVED BY ME THIS 3 DAY OF JUNE, 2002  
*Robert J. Harts*  
PLANNING DIRECTOR, CITY OF HOOD RIVER

THE PLAT OF HAZELVIEW'S SECOND ADDITION WAS EXAMINED AND APPROVED BY ME THIS 31st DAY OF MAY, 2002  
*Janis S. Gaylord*  
HOOD RIVER COUNTY COMMISSIONER CHAIRMAN  
THE PLAT OF HAZELVIEW'S SECOND ADDITION WAS EXAMINED AND APPROVED BY ME THIS 3 DAY OF JUNE, 2002  
*Robert J. Harts*  
CHAIRMAN, CITY OF HOOD RIVER PLANNING COMMISSION  
THE PLAT OF HAZELVIEW'S SECOND ADDITION WAS EXAMINED AND APPROVED BY ME THIS 03 DAY OF JUNE, 2002  
*Robert J. Harts*  
MAYOR, CITY OF HOOD RIVER  
THE PLAT OF HAZELVIEW'S SECOND ADDITION WAS EXAMINED AND APPROVED BY ME THIS 5th DAY OF JUNE, 2002  
*Shirley A. Harts*  
RECORDER, CITY OF HOOD RIVER

REGISTERED PROFESSIONAL LAND SURVEYOR  
ROY O. GAYLORD  
1815  
Expires June, 2003



SURVEYOR'S CERTIFICATE:  
I, ROY O. GAYLORD, REGISTERED LAND SURVEYOR FOR THE STATE OF OREGON, BEING FIRST DULY SWORN, DEPOSED AND SAY THAT I HAVE CORRECTLY SURVEYED AND MARKED WITH LEGAL MONUMENTS THE LAND REPRESENTED ON THE PLAT OF "HAZELVIEW'S SECOND ADDITION" HOOD RIVER COUNTY, STATE OF OREGON.  
THE SUBDIVISION PARCEL:  
A PORTION OF PARCEL 1 OF HOOD RIVER COUNTY PARTITION PLAT #200201P, RECORDED MARCH 4, 2002, HOOD RIVER COUNTY PARTITION PLAT RECORDS, LOCATED IN THE SOUTHWEST QUARTER OF SECTION 35, TOWNSHIP 3 NORTH, RANGE 10 EAST, W.M., COUNTY OF HOOD RIVER AND STATE OF OREGON, BEING MORE PARTICULARLY DESCRIBED AS FOLLOWS:  
BEGINNING AT THE SOUTHEAST CORNER OF SAID PARTITION PLAT #200201P; THENCE NORTH 88°31'53" WEST A DISTANCE OF 198.66 FEET; THENCE NORTH 89°00'38" WEST A DISTANCE OF 142.59 FEET TO A 3/4" FOUND IRON PIPE; THENCE NORTH 85°46'08" WEST A DISTANCE OF 86.66 FEET; THENCE ALONG A 15 FOOT RADIUS CURVE TO THE LEFT (THE LONG CHORD OF WHICH BEARS SOUTH 51°56'23" WEST A DISTANCE OF 20.19 FEET) AN ARC DISTANCE OF 22.14 FEET; THENCE NORTH 88°32'22" WEST A DISTANCE OF 58.60 FEET; THENCE ALONG A 15 FOOT RADIUS CURVE TO THE LEFT (THE LONG CHORD OF WHICH BEARS NORTH 38°03'37" WEST A DISTANCE OF 22.19 FEET) AN ARC DISTANCE OF 24.98 FEET; THENCE NORTH 85°46'08" WEST A DISTANCE OF 67.77 FEET; THENCE NORTH 04°13'52" EAST A DISTANCE OF 50.00 FEET; THENCE NORTH 01°52'48" EAST A DISTANCE OF 105.11 FEET; THENCE NORTH 87°21'44" WEST A DISTANCE OF 142.18 FEET; THENCE NORTH 01°29'39" EAST A DISTANCE OF 334.80 FEET; THENCE SOUTH 87°21'58" EAST A DISTANCE OF 121.65 FEET; THENCE NORTH 00°28'48" EAST A DISTANCE OF 150.15 FEET; THENCE SOUTH 87°21'06" EAST A DISTANCE OF 66.43 FEET; THENCE SOUTH 01°34'36" WEST A DISTANCE OF 199.93 FEET; THENCE SOUTH 87°25'32" EAST A DISTANCE OF 339.33 FEET; THENCE SOUTH 01°31'16" WEST A DISTANCE OF 108.62 FEET; THENCE ALONG A 57 FOOT RADIUS CURVE TO THE RIGHT (THE LONG CHORD OF WHICH BEARS SOUTH 27°00'20" EAST A DISTANCE OF 54.44 FEET) AN ARC DISTANCE OF 56.76 FEET; THENCE SOUTH 01°31'16" WEST A DISTANCE OF 96.59 FEET; THENCE SOUTH 88°31'53" EAST A DISTANCE OF 172.66 FEET; THENCE SOUTH 01°31'16" WEST A DISTANCE OF 190.00 FEET TO THE POINT OF BEGINNING.  
EXCEPTING THEREFROM ANY LANDS WHICH MAY BE CONTAINED WITHIN EXISTING DEDICATED PUBLIC STREETS AND ROADS.  
P.O.B. HAZELVIEW SECOND ADDITION  
30' BY 30' EASEMENT UNDER, OVER AND ACROSS TO UNITED TELEPHONE COMPANY OF THE NORTHWEST, dba SPRINT FOR UTILITY PURPOSES.  
*Roy O. Gaylord*  
Roy O. Gaylord PLS 1815

BASIS OF BEARING:  
1986 CITY OF HOOD RIVER DATUM.  
NARRATIVE:  
FOUND NO MAJOR DISCREPANCIES  
NOTES:  
PACIFIC POWER & LIGHT CO., BOOK 35 AT PAGE 12 IS A BLANKET EASEMENT WITH NO SPECIFIC DESCRIPTION. FARMERS IRRIGATION DISTRICT HAS SEVERAL BOOK & PAGE EASEMENTS WHICH MAY AFFECT THE PLAT BUT WILL BE REVISED & SATISFIED BY THE NEW 10' UNDERGROUND UTILITY EASEMENTS DESIGNATED ON THIS PLAT.  
REFERENCES:  
REVISED TENTATIVE PLAT OF HAZELVIEW'S SECOND, THIRD & FOURTH ADDITIONS.  
HOOD RIVER COUNTY SURVEYORS OFFICE C.S.#94103.  
HOOD RIVER COUNTY SURVEYORS OFFICE C.S.#96021.  
HOOD RIVER COUNTY SURVEYORS OFFICE C.S.#99104.  
HOOD RIVER COUNTY SURVEYORS OFFICE C.S.#2001064.  
HOOD RIVER COUNTY SURVEYORS OFFICE C.S.#2001090.  
HOOD RIVER COUNTY SURVEYORS OFFICE C.S.#2002011.

LEGEND:  
● SET 5/8" X 30" IRON ROD WITH PLASTIC CAP  
○ SET 3" LONG WITH 1" HEAD "SURVEY NAIL" (AFTER CONSTRUCTION)  
○ FOUND TERRA 5/8" IRON ROD OF RECORD, EXCEPT WHERE NOTED  
■ CALCULATED, NOT FOUND OR SET  
( ) DEED OR PLAT CALL  
TERRA SURVEYING  
DATE: FEBRUARY, 2002  
SCALE: 1" = 100'  
PROJECT: 201057HAZEL2  
P.O. BOX 617  
HOOD RIVER, OREGON 97031  
PHONE & FAX: (541) 386-4531  
terra@gorge.net  
3N - 10E - 35CA & 35DB  
OWNERS:  
CHARLES & HAZEL BOWE  
3549 INDIAN CLIFF DRIVE  
HOOD RIVER, OR. 97031  
PHONE 541.386.4596

PLAT OF HAZELVIEW'S SECOND ADDITION

CS 2002 035