

Apr 8 9 49 AM '02

FILED

APR 11 2002

Ronald Thoms
COUNTY SURVEYOR
DEPUTY

File Number 200206-P
Instrument received on the 8th day of April, 2002 at 9:49 A.M.
Cindy Judah - Deputy Clerk
Hood River County Director of Records and assessments.

SURVEYOR'S CERTIFICATE

I, Roy O. Gaylord, being first duly sworn, depose and say that I have correctly surveyed and marked with proper monuments the lands represented on this Partition Plat, the boundaries being described in Instrument Parcel 1 of the George and Marilyn Jordan Partition Plat file number 9603, Recorded March 6, 1996, Partition Plat Records & adjusted by a BLA, see C.S. No. 2000 026, July 14, 2000.

REGISTERED
PROFESSIONAL
LAND SURVEYOR

Roy O. Gaylord
OREGON
JULY 13, 1979
ROY O. GAYLORD
1815

Expires June, 2003

ACKNOWLEDGMENTS

We the owner(s) of the land shown herein, hereby declare that this division of land has been made with our free consent and in accordance with our desires.

George T. Jordan 4-3-02
Marilyn N. Jordan 4-3-02
OWNER DATE

STATE OF Oregon }
COUNTY OF Hood River } s.s.
Subscribed and sworn to before me on this 3rd day of April, 2002
by *Janis S. Gaylord*
NOTARY PUBLIC - OREGON
COMMISSION NO. 351940
MY COMMISSION EXPIRES: December 12, 2005

APPROVALS

I hereby certify that all taxes and assessments due hereon have been fully paid as required by law.

Randall Roney
Hood River County Director of Budget and Finance

I hereby certify this partition was examined and approved as of this 8th day of April, 2002

Ronald Thoms
Hood River County Surveyor

I hereby certify this partition was examined and approved as of this 8th day of April, 2002

Planning File Number #01-358
Michael Benedek
Hood River County Planning Director

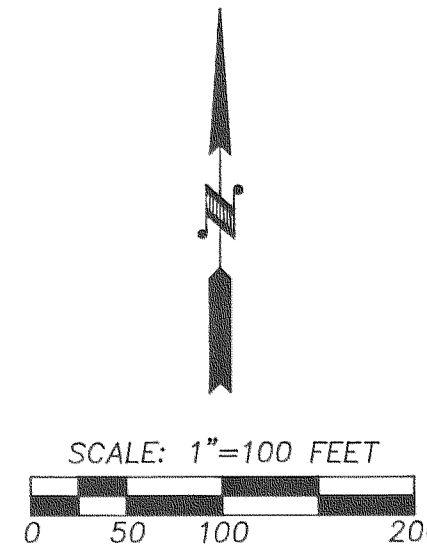
NARRATIVE:
NO MAJOR DISCREPANCIES WERE FOUND.
SEE FACE OF PLAT FOR FURTHER DETAILS

LOCATION OF SURVEY:
PARCELS OF LAND LOCATED IN THE SOUTHEAST QUARTER OF SECTION 34, TOWNSHIP 3 NORTH, RANGE 10 EAST, WILLAMETTE MERIDIAN, HOOD RIVER COUNTY, OREGON.

BASIS OF BEARING:
PRIOR TO 1986 CITY OF HOOD RIVER DATUM.

REFERENCES:
HOOD RIVER COUNTY SURVEY (C.S.) #89046.
HOOD RIVER COUNTY SURVEY #2000056.
HOOD RIVER COUNTY PARTITION PLAT #96003.
HOOD RIVER COUNTY WARRANTY DEED #742156.

S 00°34'43" W 1316.23



PROPERTY OWNERS:

TAX LOT 201:
GEORGE T. JORDAN
3876 FAIRVIEW DRIVE
HOOD RIVER, OR 97031

TAX LOT 901:
LARRY H. BLAKELY
FAIRVIEW DRIVE
HOOD RIVER, OR 97031

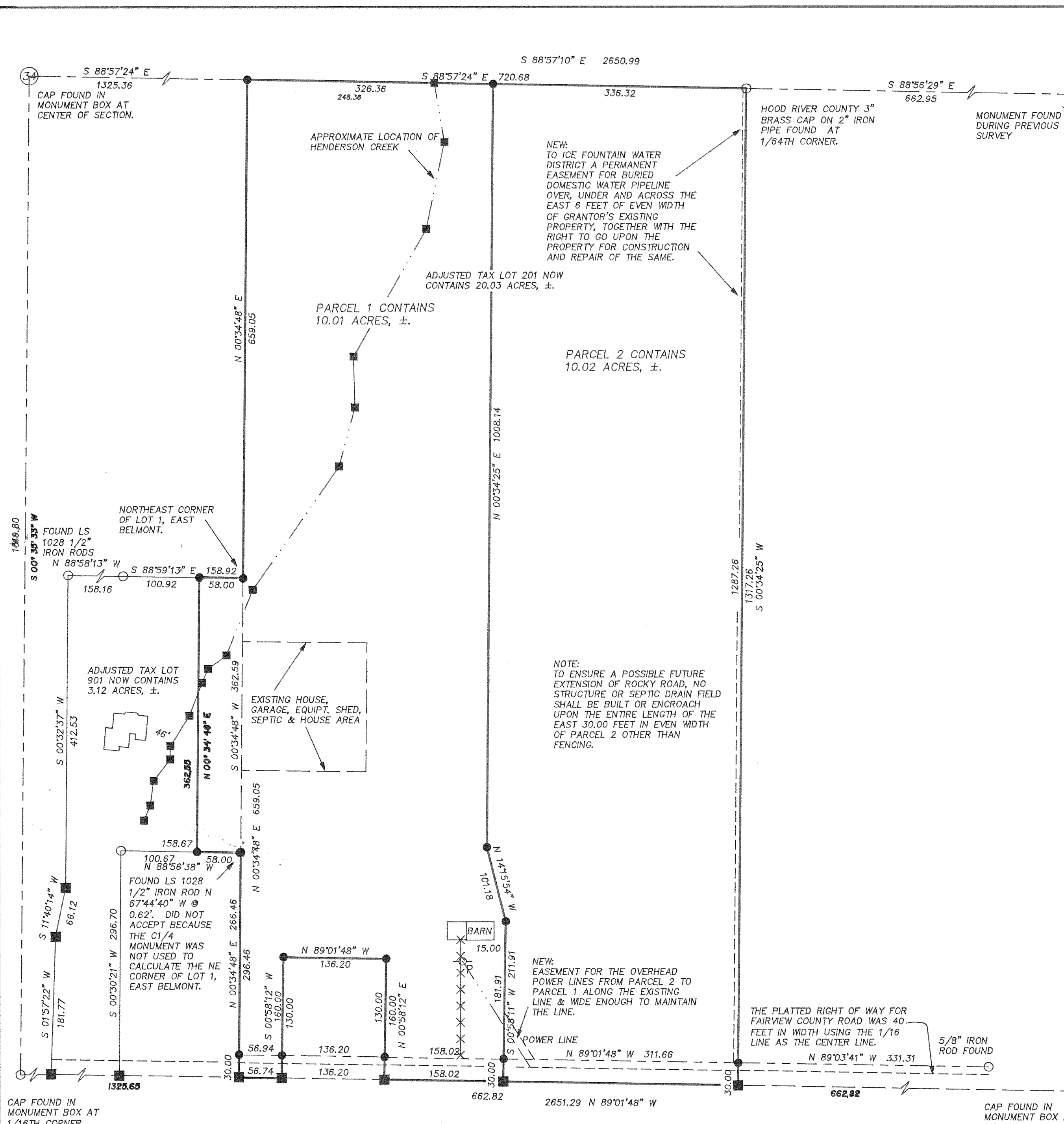
LEGEND:

- SET 5/8" X 30" IRON ROD WITH PLASTIC CAP
- FOUND MONUMENT OF RECORD
- CALCULATED, NOT FOUND OR SET
- () DEED OR PLAT CALL
- FENCE LINE
- POWER POLE
- BLA BOUNDARY LINE ADJUSTMENT

TERRA SURVEYING

DATE: APRIL, 2002
SCALE: 1" = 100'
PROJECT: 201068
ASSESSORS MAP: 3N-10-34D
P.O. BOX 617
HOOD RIVER, OREGON 97031
PHONE & FAX: (541) 386-4531
E-Mail terra@gorge.net

CAP FOUND IN MONUMENT BOX AT 1/16TH CORNER



CAP FOUND IN MONUMENT BOX AT 1/16TH CORNER.

	EXISTING PARCEL SIZE	ADJUSTED PARCEL SIZE
TAX LOT 201	19.547 ACRES	20.03 ACRES
TAX LOT 901	3.60 ACRES	3.12 ACRES

APR 08 2002
Certified to be a true and correct copy of the ORIGINAL
Dept of Records & Assessment
by *Cindy Judah* Deputy

PARTITION PLAT & BOUNDARY LINE ADJUSTMENT
for
GEORGE & MARILYN JORDAN

Rev: 4-3-02 1100
4-9-02 1400

CS 2002 021