

LEGEND :

- ⊙ SET 5/8" X 30" REBAR WITH YELLOW PLASTIC CAP, "HUFFMON, LS 2786"
- ⊙ FOUND 5/8" REBAR PER REF. #1 OR REF. #2, AS NOTED
- CALCULATED CORNERS, NOT SET.
- SET HUB & TACK.
- SET P.K. NAIL OR AS NOTED.
- ◆ SET BRASS SCREW AND WASHER, "HUFFMON, 2786"
- x— EXISTING FENCE LINE.

REFERENCES :

- 1) PLAT OF ADAMS VIEW SUBDIVISION PHASE THREE TENNESON ENGINEERING CORP. W.O. #8125, MAY 2000
- 2) PLAT OF ADAMS VIEW SUBDIVISION PHASE ONE & TWO TENNESON ENGINEERING CORP. W.O. #8125, OCTOBER 1995

NARRATIVE :

THE PURPOSE OF THIS SURVEY WAS TO ESTABLISH AND MONUMENT A PROPERTY LINE ADJUSTMENT BETWEEN LOTS 41 AND 42 OF ADAMS VIEW SUBDIVISION, PHASE THREE.

IN THE FIELD, MONUMENTS WERE FOUND FROM THE ORIGINAL PLAT AT THE CORNERS OF LOTS 41 AND 42. FOUND MONUMENTS FIT WITH PLAT CALLS. PER LANDOWNER'S DIRECTION, A 23-FOOT LONG BY 1-FOOT WIDE STRIP FROM LOT 42 WILL BE INCLUDED INTO THE OWNERSHIP OF LOT 41 TO MEET SETBACKS REQUIRED FOR A GARAGE STRUCTURE ON LOT 41.

SET 5/8"x 30" REBAR WITH YELLOW PLASTIC CAP INSCRIBED "HUFFMON LS 2786" ON THE ADJUSTMENT PARCEL.

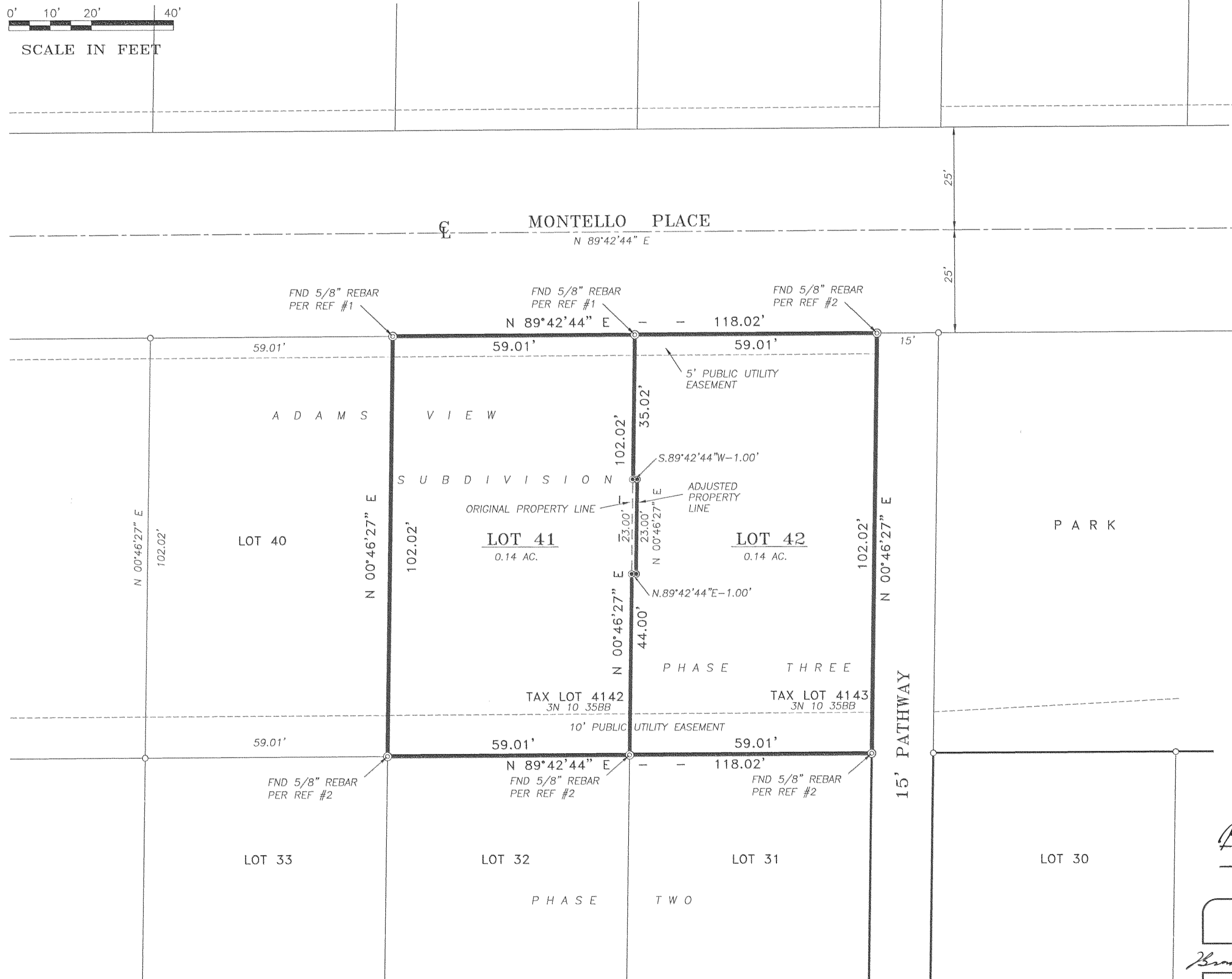
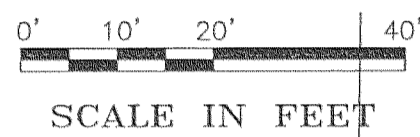
DESCRIPTION OF ADJUSTMENT PARCEL :

DESCRIPTION OF ADJUSTMENT PARCEL
A TRACT OF LAND LYING IN LOT 42, ADAMS VIEW SUBDIVISION, PHASE THREE, IN GOVERNMENT LOT 7, SECTION 35, TOWNSHIP 3 NORTH, RANGE 10 EAST, WILLAMETTE MERIDIAN, CITY OF HOOD RIVER, HOOD RIVER COUNTY, OREGON, BEING MORE PARTICULARLY DESCRIBED AS FOLLOWS.

COMMENCING AT THE SOUTHWEST CORNER OF SAID LOT 42; THENCE ALONG THE WEST LINE OF SAID LOT 42, NORTH 00°46'27" EAST 44.00 FEET TO THE TRUE POINT OF BEGINNING OF THIS DESCRIPTION; THENCE CONTINUING ALONG SAID WEST LINE, NORTH 00°46'27" EAST 23.00 FEET; THENCE LEAVING SAID WEST LINE, PARALLEL WITH THE SOUTH LINE OF SAID LOT 42, NORTH 89°42'44" EAST 1.00 FEET; THENCE PARALLEL WITH SAID WEST LINE, SOUTH 00°46'27" WEST 23.00 FEET; THENCE PARALLEL WITH SAID SOUTH LINE, SOUTH 89°42'44" WEST 1.00 FEET TO THE TRUE POINT OF BEGINNING.

CONTAINS 23.00 SQUARE FEET.

SUBJECT TO ALL EASEMENTS, AGREEMENTS, AND RIGHTS-OF-WAY OF RECORD.



FILED

APR 2 2002
Bradley R. Huffmon
COUNTY SURVEYOR

REGISTERED PROFESSIONAL LAND SURVEYOR
Bradley R. Huffmon
OREGON
JAN. 21, 1997
BRADLEY R. HUFFMON
#2786

EXPIRES: 6/30/03

Date	No.	Revisions	By	App.
SURVEY OF PROPERTY LINE ADJUSTMENT FOR R&K ENTERPRISES & B. GIL SHARP BETWEEN LOTS 41 AND 42, ADAMS VIEW SUBDIVISION, PHASE THREE IN GOVERNMENT LOT 7 SECTION 35, TWP.3 N., RANGE 10 E. W.M. HOOD RIVER, HOOD RIVER COUNTY, OREGON				
TENNESON ENGINEERING CORP.				
CONSULTING ENGINEERS 409 LINCOLN STREET THE DALLES, OREGON 97058 541-296-9177 FAX 541-296-6657				
Survey	Calculation	Design	Date	Scale
<i>BRH</i>	B.R.H.		3/27/2002	1"=20'
Drawn	DWG. No.	Checked & App.	Work Order No.	Sheet
S.D.H.	10390	<i>BRH</i>	10390	1 of 1