

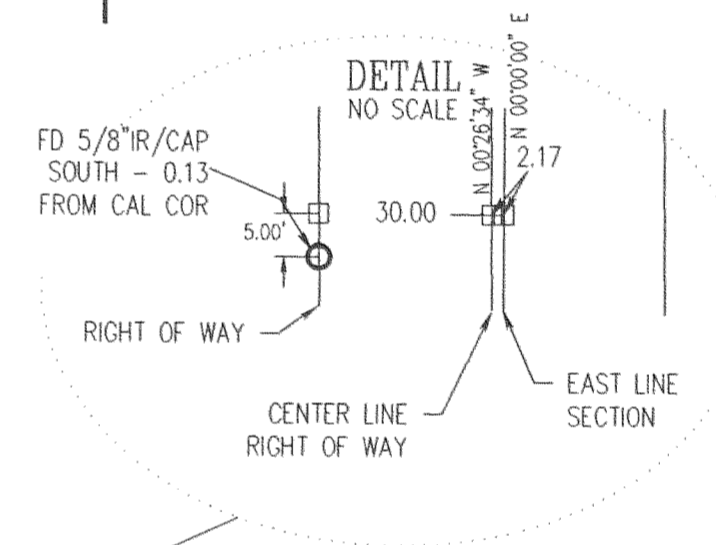
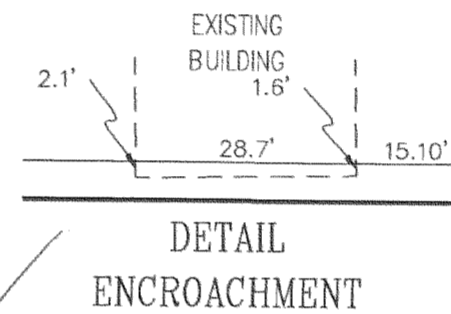
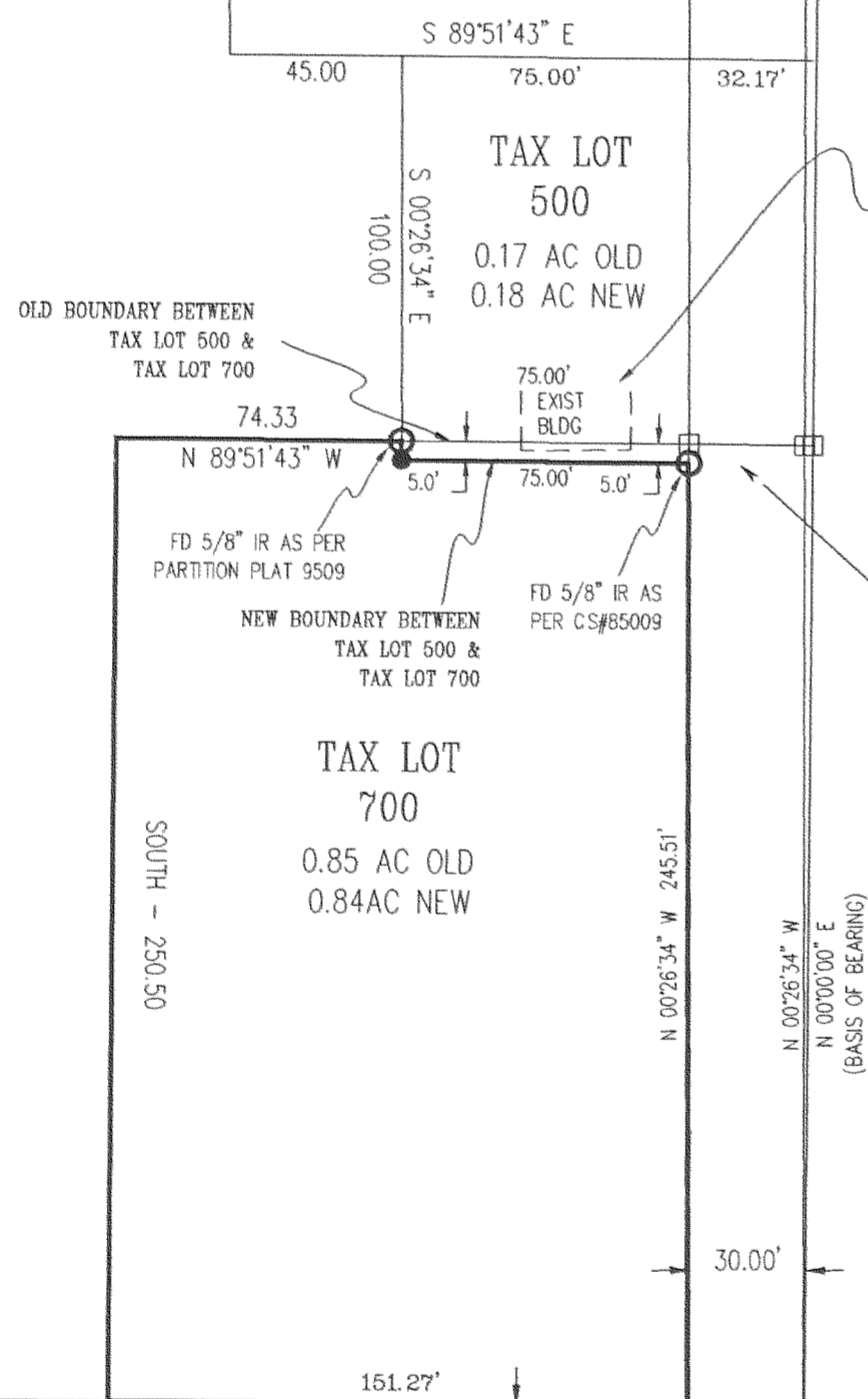
BOUNDARY LINE ADJUSTMENT IN
SE 1/4, SEC 22, T 2 N, R 10 E, WM
COUNTY OF HOOD RIVER, STATE OF OREGON

PARCEL 2

1.63 Acres

ODELL HWY

NORTH - 630.00



LEGEND

- = SET 5/8" IR WITH PLASTIC CAP MARKED OR #932 & WA #22098 EXCEPT AS NOTED
- = FOUND MONUMENT AS NOTED
- = CALCULATED CORNER AS PER CS #85009
- ⊠ = CALCULATED 1/4 COR AS PER CS #85009
- ⊠ = CALCULATED SEC COR AS PER CS #85009

NARRATIVE OF SURVEY

THE PURPOSE OF THE SURVEY WAS TO ADJUST THE BOUNDARY BETWEEN TAX LOT 500 AND 700 AS SHOWN HEREIN. A BUILDING ENCLOSES ON THE NORTH BOUNDARY OF TAX LOT 700. A PARTITION DONE BY OUR FIRM FOR JOHN WEBER IN 1995 AND A SURVEY DONE BY OUR FIRM FOR JOHN WEBER IN 1985 WERE USED AS REFERENCE FOR THIS SURVEY

REFERENCE SURVEYS

PARTITION PLAT 95009 FILED MARCH 2, 1995
SURVEY BY KLEIN & ASSOC., FEB 1985, CS#85009

FILED

MAR 29 2002

Robert Tolats
COUNTY CLERK
DEPUTY

BOUNDARY ADJUSTMENT
MARTHA WEBER

REGISTERED
PROFESSIONAL
LAND SURVEYOR

Anthony C. Klein
OREGON
JULY 17, 1970
ANTHONY C. KLEIN
932

Expires 6-30-2003

Klein & Assoc.
LAND SURVEYING
1203 12TH STREET, SUITE H
HOOD RIVER, OREGON 97031
Tele: (541)386-3322
Job No.: 01001
Date: SURVEYED MARCH 2002

ZN10 2200

ZN10 22 500-700

Reced: 3-18-02 1500
3-26-02 1400

CS 2002 017

SOUTH 1/4
SEC 22
FD DURING
PREVIOUS SURVEYS

SE SEC COR
SEC 22
FD DURING PREVIOUS
SURVEYS