

NARRATIVE

PURPOSE:

THE PURPOSE OF THIS SURVEY IS TO DEPICT A CONTROL SURVEY NETWORK TRAVERSE, DEPICT MONUMENTS LOCATED AND TIED BY SURVEY AS PART OF A PRE-CONSTRUCTION MONUMENTATION RECOVERY SURVEY AND TO DEPICT THE RESOLUTION OF SEVEN DISTINCT AREAS OF RIGHT-OF-WAY ALIGNMENT ALONG THE HISTORICAL COLUMBIA RIVER HIGHWAY WHICH ALSO CARRIES THE STREET NAMES OF CASCADE STREET, OAK STREET, FRONT STREET, AND STATE STREET FROM THE INTERSECTION WITH COUNTRY CLUB ROAD TO THE INTERSECTION WITH STATE HIGHWAY 35. THE SEVEN AREAS ARE SHOWN BY NUMBER WITHIN A CLOUDED PORTION OF INFORMATION SHOWN HEREON. NO CENTER LINE ALIGNMENT WAS DETERMINED FOR THIS SURVEY EXCEPT AS NECESSARY TO SHOW AND DEPICT THE RIGHT-OF-WAY LINES WITHIN THE SEVEN AREAS CONSIDERED. NO STATIONING WAS DETERMINED FOR THE ALIGNMENT OF THE ROADWAY AS SHOWN.

BASIS OF BEARINGS AND COORDINATES:

THE BEARINGS AND COORDINATES OF THE INFORMATION DEPICTED HEREON ARE BASED UPON A PRIVATE SURVEY CONDUCTED BY W&H PACIFIC FOR THE OREGON DEPARTMENT OF TRANSPORTATION IN SEPTEMBER OF 1999 AND RECORDED AS SURVEY NUMBER 2000-037 IN MAY OF 2000 WITHIN THE HOOD RIVER COUNTY SURVEY RECORDS. THE BASIS OF COORDINATES IS THE NGS STATION "PONDER 2" ESTABLISHED IN 1975 BY THE NATIONAL GEODETIC SURVEY AND IS A BRASS CAP MONUMENT SET IN CONCRETE NEAR THE EASTERLY TRAVEL LANE OF THE HIGHWAY OFF-RAMP TO U.S. HIGHWAY 84 AT CASCADE AVENUE. A TRAVERSE NETWORK WAS RUN AND CLOSED UPON CRH-2, AS SET BY W&H PACIFIC. A FOUND 83 mm ALUMINUM CAP ON A 5/8" ALUMINUM ROD SET BY W&H PACIFIC AND NOTED UPON THEIR SURVEY NO. 2000-037. THESE TWO MONUMENTS, "PONDER 2" AND "CRH-2" FORM THE BASIS OF BEARINGS FOR THIS PROJECT. COORDINATES ARE STATE PLANE, METRIC ESTABLISHED FROM THE NORTH AMERICAN DATUM OF 1983/91, OREGON NORTH ZONE. THE COORDINATES WERE CONVERTED TO A LOCAL DATUM PLANE UTILIZING A DATUM ADJUSTMENT FACTOR OF 0.999932918, AS DERIVED FROM SAID SURVEY NO. 2000-037. USING THIS FACTOR AND DIVIDING IT INTO THE STATE PLANE COORDINATE AT SEA LEVEL WILL RESULT IN THE LOCAL DATUM COORDINATES FOR NORTHING AND EASTING.

ELEVATIONS ARE BASED UPON THE ELEVATION OF "PONDER 2", A VERTICAL FIRST ORDER CLASS II MONUMENT PUBLISHED AT 102.638 METERS, NAVD '88 DATUM. FROM SAID MONUMENT WE RAN A DIFFERENTIAL LEVEL CIRCUIT LOOP FOR THE LENGTH OF THE PROJECT USING A LEICA NA2002 DIGITAL LEVEL. VERTICAL CLOSURE WAS 0.0149 METER OVER A HORIZONTAL DISTANCE OF 6,357.61 METERS. A LEAST SQUARES ADJUSTMENT WAS ACCOMPLISHED.

RESOLUTION

AREA 1 SEE SHEET 5&6

ALL SURVEYS OF RECORD IN AREA 1 RESOLVED THE HWY ROW USING THE EXISTING ROAD ALIGNMENT AND/OR NOTING THAT THE ROW LINES ARE APPROXIMATE, AND NO CURVE DATA IS GIVEN IN AREAS OF CURVES. YET IN SPITE OF THE LACK OF ROW DATA, SOME MONUMENTS WERE SET TO REPRESENT THE ROW LINES. RESOLVED ROW LINES ARE SIMPLY TANGENTS BETWEEN FOUND MONUMENTS, ASSUMING AN 18.288 M (60.00') WIDTH. I HELD THE LINE BETWEEN POINTS 1117 AND 1017 (SEE SURVEY 82011), THE LINE BETWEEN POINT 1020 AND A POINT 0.564 M (1.85') SOUTH OF POINT 1019. (SEE SURVEY 99019).

AREA 2 SEE SHEET 8

CASCADE STREET: I HELD A PERPENDICULAR RELATIONSHIP BETWEEN POINT 1108 (DLC NO 38, SE CORNER) AND POINT NO.1115, PROCEEDING NORTHERLY 9.144M (30.00 FEET) FROM 1115 TO ESTABLISH THE CENTER LINE OF OAK STREET (SEE SURVEYS BY TERRA SURVEYING; 2001044 = PART. PLAT 2001-18P, SURVEY 91070 = PART. PLAT 91-23, AND SURVEY 90089). I EXTENDED THE TANGENT AND HELD THE CURVE DATA PER THE ABOVE SURVEYS BY TERRA. NOTE: THE CURVE IS NON-TANGENT. I HELD 9.144 M (30.00') ON EACH SIDE OF THE CENTERLINE FOR THE NORTH AND SOUTH RIGHT-OF-WAY LINES OF OAK STREET.

AREA 3 SEE SHEET 9

N. LINE OF CASCADE STREET: I HELD 9.144 M (30.00') NORTH OF CENTER LINE AS ESTABLISHED IN AREA 2.

20TH STREET: DOCUMENT NO. 820504 (PARCEL 2) DESCRIBES THE CENTERLINE OF 20TH ST. FROM THE SE CORNER OF DLC NO. 38 (POINT 1108), I PROCEEDED NORTHWESTERLY ALONG THE PREVIOUSLY ESTABLISHED CENTERLINE OF OAK ST. A DISTANCE OF 28.767 M (94.38'), PER SAID DOCUMENT, TO ESTABLISH POINT 4041. THE CENTERLINE-CENTERLINE INTERSECTION. I THEN HELD THE DEED ANGULAR RELATIONSHIPS AND CURVE DATA TO COMPUTE THE CENTERLINE OF 20TH STREET. FINALLY, I ROTATED THE ENTIRE COMPUTED CENTERLINE OF 20TH STREET ABOUT SAID POINT 4041 SO THAT THE MOST NORTHERLY COMPUTED CENTERLINE POINT (4047) MEASURES 9.144 M (30.00') WEST OF POINT 1116. I HELD POINT 1116 AS THE SOUTHWEST CORNER OF BLOCK 11, "AMENDED PLAT OF IDLEWILD" (SEE SURVEYS 86025 & 97032). I HELD 9.144 M (30.00') WEST OF AND PARALLEL WITH THE COMPUTED CENTERLINE FOR THE WEST RIGHT-OF-WAY LINE OF 20TH STREET.

AREA 4 SEE SHEET 11

OAK STREET: HOLDING THE LINE BETWEEN POINTS 1022 AND 1108 FOR THE BACK AZIMUTH, I TURNED THE RECORD ANGLE LEFT OF 175°15'11" AND PROCEEDED THE RECORD DISTANCE OF 169.051 M (554.63') (PER SURVEY 87058 BY DANNY CRON) TO ESTABLISH THE CENTERLINE ANGLE POINT (#4034). I THEN TURNED THE RECORD ANGLE RIGHT OF 167°20'48" AND PROCEEDED THE RECORD DISTANCE OF 27.158 M (89.10') TO ESTABLISH THE CENTERLINE-CENTERLINE INTERSECTION OF OAK ST. & 13TH ST. (POINT 4035). I HELD 9.144 M (30.00') NORTH OF AND PARALLEL WITH THE COMPUTED OAK ST. CENTERLINE FOR THE NORTH RIGHT-OF-WAY LINE.

AS A CHECK, I TURNED 90° RIGHT FROM THE LINE BETWEEN POINTS 4034 AND 4035 AND PROCEEDED 70.686 M (231.91') PER SURVEY 87058 TO ESTABLISH THE CENTERLINE OF 13TH ST. POINTS 1105 9.146 M (30.008') AND 1106 9.113 M (29.899'), SET IN SURVEY 87063, CHECKED WELL AT 30.00' OFFSET.

AREA 5 SEE SHEET 13

OAK STREET: I HELD A PERPENDICULAR RELATIONSHIP BETWEEN POINTS 1013 (CITY MONUMENT B-1 AT 6TH ST. CENTERLINE) AND 1002 (ON SOUTH ROW EAST OF 9TH ST.), PROCEEDING NORTH 9.144 M (30.00') FROM #1002 (SEE SURVEYS 87005, AND 84036). POINT 1002 WAS SET BY CRON AND HELD BY KLEIN IN SURVEY 84036.

9TH STREET: I HELD THE LINE BETWEEN POINTS 1001 AND 1103 FOR THE WEST RIGHT-OF-WAY LINE. I HELD A WIDTH OF 15.240 M (50.00') (SEE SURVEY 91015) NORTH OF OAK STREET AND A WIDTH OF 12.192 M (40.00') SOUTH OF OAK STREET. POINT 1103 IS A STONE WITH AN "X" CALLED IN SURVEY 91015 AS THE PLATTED NE CORNER OF BLOCK 3, "RIVERVIEW PARK ADDITION TO THE CITY OF HOOD RIVER."

AREA 6 SEE SHEET 14

OAK STREET: SEE AREA 5.

6TH STREET: I HELD 4.572 M (15.00') EAST OF AND 13.716 M (45.00') WEST OF THE LINE BETWEEN POINTS 1013 (CITY MON. #3) AND 1016 (CITY MON. #9) FOR THE EAST AND WEST RIGHT-OF-WAY LINES, RESPECTIVELY. SEE SURVEYS 90058, 95018, 92068, 84025, 88062, 87005.

AREA 7 SEE SHEET 14

OAK STREET: I HELD THE LINE BETWEEN FOUND POINTS 1013 (CITY MON. #3, AT 6TH ST.) AND 1015 (CITY MON. #1, AT FRONT ST.) FOR CENTERLINE. I HELD 9.144 M (30.00') NORTH AND PARALLEL FOR THE NORTH RIGHT-OF-WAY LINE. POINT 1015 IS CALLED CITY MON. #133 IN SURVEY 78037. IN SURVEY 80024, POINT 1013 IS CALLED "B-1" AND POINT 1015 IS CALLED "B-3." SEE ALSO SURVEYS 86001, 89052, AND 95018.

5TH STREET: I COMPUTED POINT 4017 (CENTERLINE-CENTERLINE INTERSECTION OF 5TH ST. & OAK ST.) BY PRORATION. I COMPUTE 74.697 M (245.07') EASTERLY OF POINT 1013 ON LINE BETWEEN POINTS 1013 & 1015 AS FOLLOWS:

1535.457' (MEASURED) X 245.00' = 245.073' = 245.07'
1535.00' (SEE SURVEY 88062)

I HELD THE LINE BETWEEN COMPUTED POINT 4017 AND FOUND POINT 1014 (SET IN SURVEY 92068) AT CASCADE FOR CENTERLINE, AND I HELD A WIDTH OF 18.288 M (60.00'), BEING 9.144 M (30.00') ON EACH SIDE OF CENTERLINE.

REFERENCE DOCUMENTS

THE FOLLOWING IS A LIST OF SURVEYS UTILIZED FOR RESEARCH OF THE PROJECT CORRIDOR. EACH SURVEY WITHIN OR NEAR THE PROJECT LIMITS WAS REVIEWED FOR MONUMENTATION HAVING BEEN SET OR FOUND THAT MAY BE SUBJECT TO DISTURBANCE BY THE ROAD PRESERVATION PROJECT. A SEARCH WAS THEN CONDUCTED TO ASCERTAIN THE CURRENT PRESENCE OF SAID MONUMENT AND THE LIKELIHOOD THAT IT MAY BE DISTURBED. IF THE MONUMENT WAS DETERMINED TO BE AT RISK THE MONUMENT WAS LOCATED BY SURVEY AND IS DEPICTED HEREON. THOSE MONUMENTS NOT FOUND OR DETERMINED TO NOT BE AT RISK ARE NOT SHOWN OR DEPICTED HEREON.

Table with columns: SURVEY #, TAX MAP REF., and a list of monument points with bearings and distances (e.g., 0688 - 3N 10 25CC, 77098 - 3N 10 25CC, 90089 - 3N 10 26DC).

REFERENCE DOCUMENTS CONT

SUBDIVISION PLATS

- PLAT OF OAK CREST ADDITION TO CITY OF HOOD RIVER
HIGHLAND ADDITION TO THE TOWN OF HOOD RIVER
IDLEWILD ADDITION
IDLEWILD ADDITION TO HOOD RIVER
PLAT OF ADAMS PARADISE ACREAGE
ERWIN & WATSONS 2ND ADDITION
RIVERVIEW PARK ADDITION
MAP OF GEM CITY ADDITION
SCOTT COMMERCIAL BUILDING
CONDOMINIUM PLAT
PARTITION PLAT 90-03 93-22
91-23 93-07

CORNER RECORD
CORNER NO. 584
SE CORNER SETION 25
T3N R10W, WM.

DEED REFERENCES

Table with columns: DOCUMENT, TAX LOT, MAP, and a list of deed references (e.g., DOC 820504, 20TH STREET, 3N1026DC).

HOOD RIVER COUNTY SURVEYOR'S OFFICE
RECEIVED:
ACCEPTED FOR FILING:
SURVEY NUMBER:

THIS SURVEY WAS PREPARED USING A HEWLETT-PACKARD DESIGN JET 1050C WITH HEWLETT-PACKARD PRODUCT NO C4871A ON HEWLETT-PACKARD 51642B POLYESTER FILM.

REGISTERED PROFESSIONAL LAND SURVEYOR

Signature of Pat Marquis
OREGON
JANUARY 20, 1989
PAT MARQUIS
2382

EXPIRES 12/31/02

PROCEDURES:

FIELD TRAVERSE PROCEDURES: THE TRAVERSE NETWORK WAS PERFORMED TO ODOT STANDARDS, TURNING TWO SETS OF ANGLES WITH A DIRECTIONAL READING TOTAL STATION, RECORDING DATA ELECTRONICALLY. A LEAST SQUARES ADJUSTMENT WAS PERFORMED USING LISCAD VERSION 5.0 SOFTWARE. SEE SHEET 2 OF 19 FOR ERROR ANALYSIS.

EQUIPMENT

WE UTILIZED TWO INSTRUMENTS IN CONDUCTING THE SURVEY AS DEPICTED. A LEICA TC 1000, WAS USED IN TIEING MONUMENTS FOR THE MONUMENT RECOVERY SURVEY AND FOR MONUMENT TIES INCORPORATED INTO THE RIGHT-OF-WAY RESOLUTION. A LEICA TCA 1800, SERIAL NO. 414306, READING TO 1 SECOND OF ARC WITH DISTANCE READOUT TO 0.001 METER WITH A PPM OF 0.002 METERS WAS UTILIZED IN THE SURVEY TRAVERSE NETWORK.

TRIPODS WERE UTILIZED FOR EACH PRISM POINTING SETUP WITH A LEICA TRI-BRACH WITH AN 8 MINUTE PER 2 MILLIMETER CIRCULAR BUBBLE. TIES TO MONUMENTS WERE MADE UTILIZING A SEKO ROD WITH BUILT IN BUBBLE OF 8 MINUTE PER 2 MILLIMETER CIRCULAR BUBBLE.

INDEX

Table with columns: SHEET and NARRATIVE REFERENCE DOCUMENTS, EQUIPMENT, PROCEDURES, AND INDEX (e.g., SHEET 1 TRAVERSE/NETWORK POINTS, COORDINATE LIST, TRAVERSE ANALYSIS DATA).

FILED

JAN 9 2002
Signature of Rosalee Tolbert
COUNTY CLERK



8405 SW NIMBUS AVE.
BEAVERTON, OREGON
97008-7120
TEL: (503)626-0455
FAX: (503)526-0775
WWW.WHPACIFIC.COM

OREGON DEPT. OF TRANSPORTATION
HORIZONTAL CONTROL NETWORK,
MONUMENT RECOVERY AND RIGHT-OF-WAY RETRACEMENT SURVEY
COUNTRY CLUB ROAD TO MT. HOOD HIGHWAY
HISTORIC COLUMBIA RIVER HIGHWAY
WITHIN THE NATHANIEL COE D.L.C. NO. 37, THE WILLIAM JENKINS D.L.C. NO 38,
LOCATED IN THE SW & SE 1/4 SECTION 25, THE SW & SE 1/4 SECTION 26,
THE SE 1/4 SECTION 27, THE NE 1/4 SECTION 36,
TOWNSHIP 3 NORTH, RANGE 10 EAST,
AND WITHIN THE NATHANIEL BENSON D.L.C. NO 37,
LOCATED IN THE SW 1/4 SECTION 30, THE NW 1/4 SECTION 31,
TOWNSHIP 3 NORTH, RANGE 11 EAST,
OF THE WILLAMETTE MERIDIAN, CITY OF HOOD RIVER,
HOOD RIVER COUNTY, OREGON

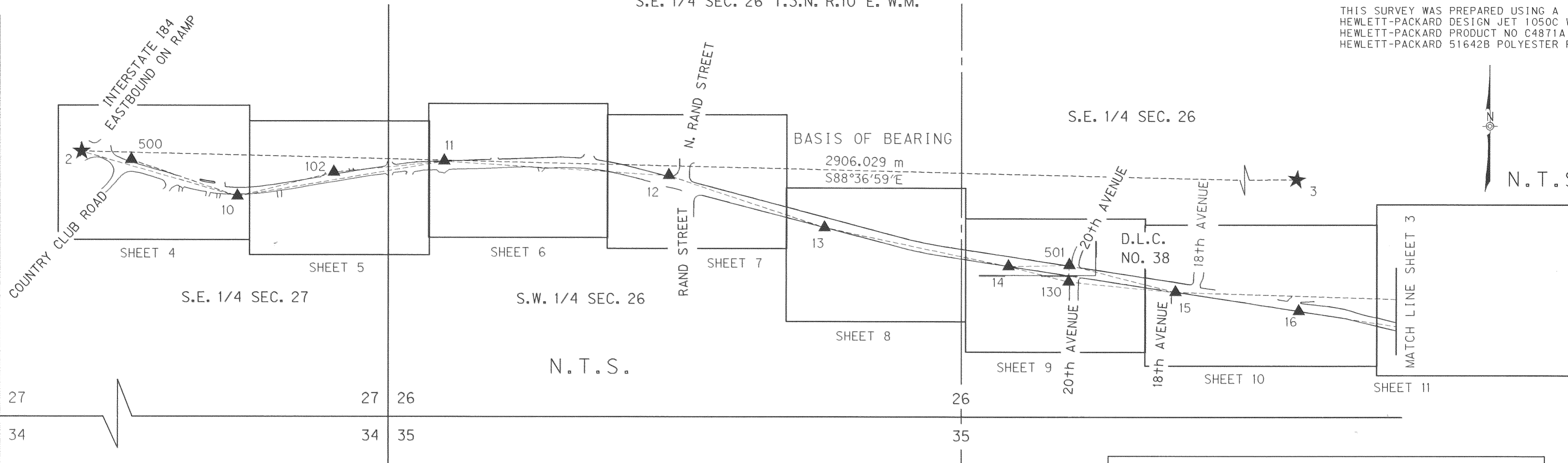
DECEMBER 13, 2001 FOR O.D.O.T REGION 1 SURVEY GROUP
123 NW FLANDERS, PORTLAND, OR. 97209-4037
O.D.O.T. CONTRACT NO. 17708 KEY NO. 10681 SHEET 1 OF 19

Handwritten notes: Rep: 1-7-02 1000 CS # 2002 003

S.E. 1/4 SEC. 27 T.3 N. R.10 E. W. M.
 S.W. 1/4 SEC. 26 T.3 N. R.10 E. W.M.
 S.E. 1/4 SEC. 26 T.3.N. R.10 E. W.M.

HOOD RIVER COUNTY SURVEYOR'S OFFICE
 RECEIVED: _____
 ACCEPTED FOR FILING: _____
 SURVEY NUMBER: _____

THIS SURVEY WAS PREPARED USING A
 HEWLETT-PACKARD DESIGN JET 1050C WITH
 HEWLETT-PACKARD PRODUCT NO C4871A ON
 HEWLETT-PACKARD 51642B POLYESTER FILM.



CONFIDENCE LEVEL LIMITS ± 95% CONFIDENCE LIMITS

POINT ID	SEMI MAJOR	SEMI MINOR	ORIENTATION*
1	0.017	0.001	102°01'13"
10	0.006	0.001	15°51'41"
11	0.012	0.002	2°07'11"
12	0.018	0.002	2°18'43"
13	0.020	0.002	4°28'28"
14	0.022	0.002	5°18'52"
15	0.022	0.002	5°37'27"
16	0.022	0.003	5°43'37"
17	0.021	0.003	5°46'56"
18	0.019	0.003	6°12'40"
19	0.018	0.003	6°42'59"
20	0.016	0.003	8°13'28"
21	0.014	0.003	10°05'09"
22	0.012	0.003	9°32'59"
23	0.022	0.004	15°17'22"

* NORTH AZIMUTH
 FIXED POINTS NOT SUBJECT TO LEAST SQUARES ADJUSTMENT OR
 CONFIDENCE LEVEL ANALYSIS:
 9283-1
 9283-2



NETWORK/TRVERSE POINT AND
 SECONDARY TRAVERSE POINT COORDINATE TABLE
 IN LOCAL DATUM PLANE COORDINATES (STATE PLANE COORDINATES = LOCAL DATUM PLANE X 0.999932918)

POINT	NORTHING	EASTING	ELEVATION	DESCRIPTION
2	227713.190	2418415.685	102.638	FND "PONDER 2" 102mm DIA BRASS DISK IN A 305 mm Sq. CONC. MON-SEE SHEET 4 OF 19 SET BY NGS
10	227650.361	2418633.942	97.251	SET 16 mm X 762 mm IR W/38 mm AC MARKED "WHP 10"
11	227699.715	2418924.311	88.433	SET 25 mm BD W/76 mm SHANK MARKED "W&HPACIFIC 11"
12	227679.772	2419240.012	86.373	SET 25 mm BD W/76 mm SHANK MARKED "W&HPACIFIC 12"
13	227607.048	2419458.573	93.943	SET 25 mm BD W/76 mm SHANK MARKED "W&HPACIFIC 13"
14	227553.021	2419717.066	95.123	SET 25 mm BD W/76 mm SHANK MARKED "W&HPACIFIC 14"
15	227517.164	2419951.120	95.036	SET 25 mm BD W/76 mm SHANK MARKED "W&HPACIFIC 15"
16	227490.409	2420124.106	89.598	SET 25 mm BD W/76 mm SHANK MARKED "W&HPACIFIC 16"
102	227683.886	2418769.362	93.852	SET 13 mm X 762 mm IR W/RPC "TRAV PT." FLUSH
130	227531.744	2419801.420	95.084	SET 13 mm X 609 mm IR W/RPC "W&HPACIFIC CONTROL" FLUSH
500	227701.361	2418485.019	100.926	SET 14 mm X 762 mm IR W/38 mm AC "W&HPACIFIC 500"
501	227554.982	2419802.229	94.901	SET 25 mm BD W/76 mm SHANK MARKED "W&HPACIFIC 501"

RESIDUALS FOR ANGLES AND DISTANCES

AT	TO	DISTANCE*	DISTANCE RESIDUAL	ANGLE RESIDUAL
10	2	227.120	0.000	0°00'00"
10	2	227.120	0.000	0°00'00"
10	11	294.534	0.000	0°00'00"
11	10	294.534	0.000	0°00'00"
11	12	316.330	0.000	0°00'00"
12	11	316.330	0.000	0°00'00"
12	13	230.343	0.000	0°00'00"
13	12	230.343	0.000	0°00'00"
13	14	264.079	0.000	0°00'00"
14	13	264.078	0.000	0°00'00"
14	15	236.785	0.000	0°00'00"
15	14	236.784	0.000	0°00'00"
15	16	175.042	0.000	0°00'00"
16	15	175.043	0.000	0°00'00"
16	17	230.606	0.001	0°00'00"
17	16	230.608	-0.001	0°00'00"
17	18	286.000	0.000	0°00'00"
18	17	285.999	0.000	0°00'00"
18	19	104.443	-0.001	0°00'00"
19	18	104.442	0.000	0°00'00"
19	20	211.224	0.000	0°00'00"
20	19	211.225	0.000	0°00'00"
20	21	162.749	0.000	0°00'00"
21	20	162.749	0.000	0°00'00"
21	22	402.334	0.000	0°00'00"
22	21	402.335	0.000	0°00'00"
22	23	668.086	-0.001	0°00'00"
23	22	668.085	0.000	0°00'00"
23	1	1153.857	0.000	0°00'00"
1	23	1153.857	0.000	0°00'00"
1	3	473.702	0.000	0°00'00"

*CALCULATED HORIZONTAL DISTANCE IN METERS
 DERIVED FROM THE MEASURED SLOPE DISTANCE

FILED

JAN 9 2002
Paul White
 COUNTY SURVEYOR
 HOOD RIVER, OREGON

LEGEND		
★	SET OR FOUND CONTROL POINT AS NOTED (ON SHEET 2 & 3)	1 POINT NUMBER
▲	SET NETWORK/TRVERSE POINT AS NOTED (ON SHEET 2 & 3)	AC ALUMINUM CAP
—	EDGE OF ROADWAY	RPC RED PLASTIC CAP
—	DLC LINES	BD BRASS DISK
—	SECTION LINE	IR IRON ROD
---	QUARTER SEC. LINE	IP IRON PIPE
---	TRAVERSE LINE	BW BRASS WASHER



W&H PACIFIC
 8405 SW NIMBUS AVE.
 BEAVERTON, OREGON
 97008-7120
 TEL: (503)626-0455
 FAX: (503)526-0775
 WWW.WHPACIFIC.COM

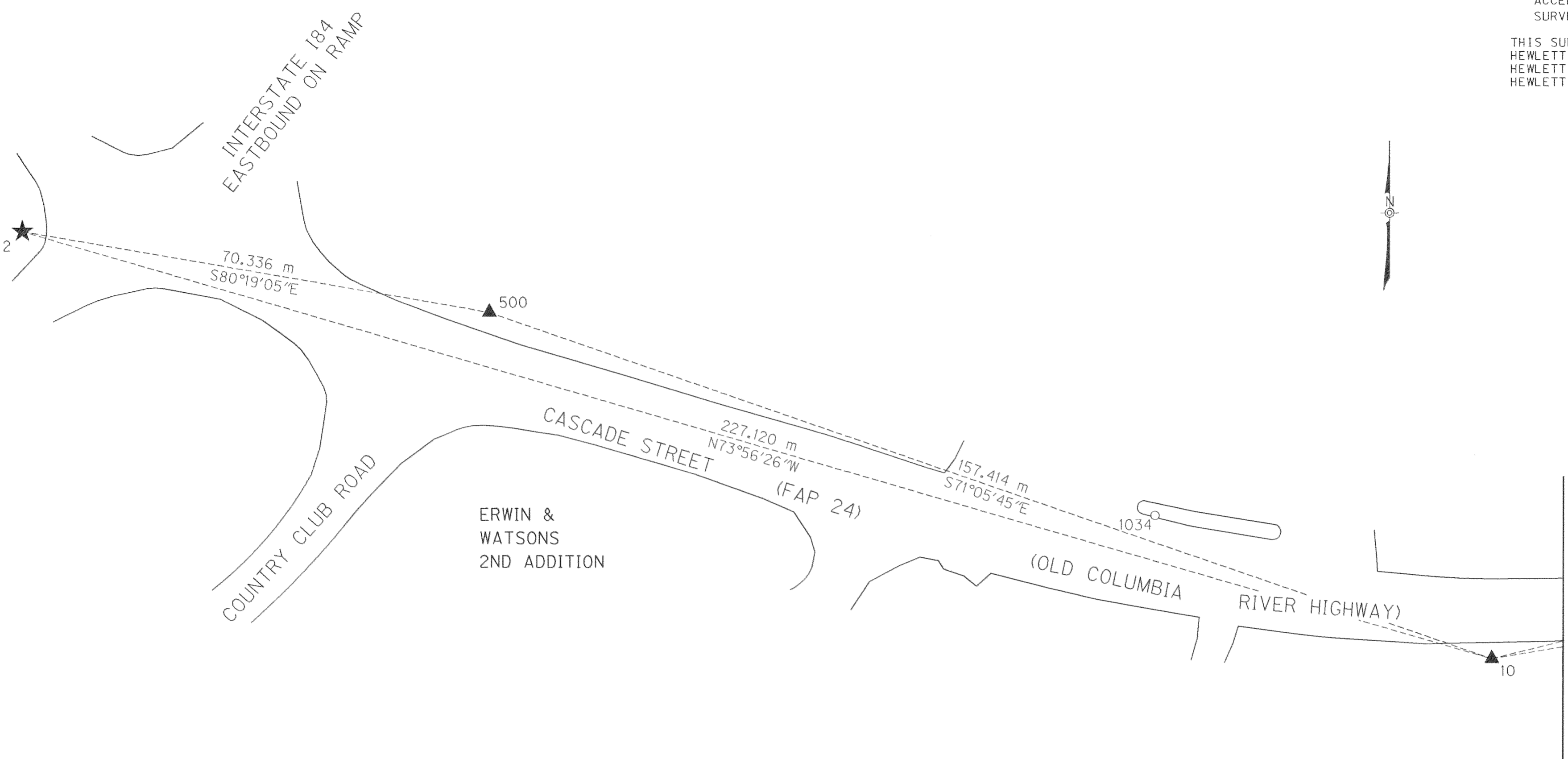
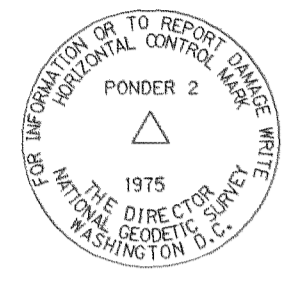
REGISTERED PROFESSIONAL LAND SURVEYOR
Pat Marquis
 OREGON
 JANUARY 20, 1989
 PAT MARQUIS
 2382
 EXPIRES 12/31/02

OREGON DEPT. OF TRANSPORTATION
 HORIZONTAL CONTROL NETWORK,
 MONUMENT RECOVERY AND RIGHT-OF-WAY RETRACEMENT SURVEY
 COUNTRY CLUB ROAD TO MT. HOOD HIGHWAY
 HISTORIC COLUMBIA RIVER HIGHWAY
 WITHIN THE NATHANIEL COE D.L.C. NO. 37, THE WILLIAM JENKINS D.L.C. NO 38,
 LOCATED IN THE SW & SE 1/4 SECTION 25, THE SW & SE 1/4 SECTION 26,
 THE SE 1/4 SECTION 27, THE NE 1/4 SECTION 36,
 TOWNSHIP 3 NORTH, RANGE 10 EAST,
 AND WITHIN THE NATHANIEL BENSON D.L.C. NO 37,
 LOCATED IN THE SW 1/4 SECTION 30, THE NW 1/4 SECTION 31,
 TOWNSHIP 3 NORTH, RANGE 11 EAST,
 OF THE WILLAMETTE MERIDIAN, CITY OF HOOD RIVER,
 HOOD RIVER COUNTY, OREGON

DECEMBER 13, 2001 FOR O.D.O.T REGION 1 SURVEY GROUP
 123 NW FLANDERS, PORTLAND, OR. 97209-4037
 O.D.O.T. CONTRACT NO. 17708 KEY NO. 10681 SHEET 2 OF 19

CS # 2002.003

THIS SURVEY WAS PREPARED USING A
 HEWLETT-PACKARD DESIGN JET 1050C WITH
 HEWLETT-PACKARD PRODUCT NO C4871A ON
 HEWLETT-PACKARD 51642B POLYESTER FILM.



FILED

JAN 9 2002
Brenda Tolmie
 COUNTY SURVEYOR
 DEPUTY

W&H PACIFIC
 8405 SW NIMBUS AVE.
 BEAVERTON, OREGON
 97008-7120
 TEL: (503)626-0455
 FAX: (503)526-0775
 WWW.WHPACIFIC.COM

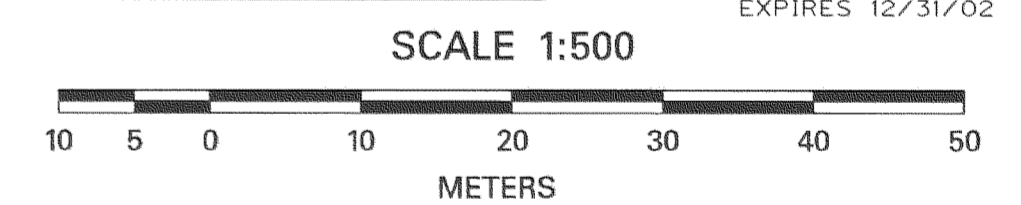
REGISTERED PROFESSIONAL LAND SURVEYOR
Pat Marquis
 OREGON
 JANUARY 20, 1989
 PAT MARQUIS
 2382
 EXPIRES 12/31/02

LEGEND		
★	SET OR FOUND CONTROL POINT AS NOTED (ON SHEET 2 & 3)	AC ALUMINUM CAP
▲	SET NETWORK/TRVERSE POINT AS NOTED (ON SHEET 2 & 3)	— EDGE OF ROADWAY
○	FOUND MONUMENT AS NOTED	— RIGHT-OF-WAY LINE
CS	COUNTY SURVEY	--- CENTER LINE
(XX,CSXX)	RECORD DISTANCE, ORIGIN	- - - - TRAVERSE LINE
		1 POINT NUMBER
		RPC RED PLASTIC CAP
		BD BRASS DISK
		IR IRON ROD
		IP IRON PIPE

RECOVERED MONUMENT LIST

POINT	NORTHING	EASTING	ELEVATION	DESCRIPTION	ORIGIN
1034	227671.552	2418583.947	97.933	FND RAIL ROAD SPIKE FLUSH	CS 99031

(STATE PLANE COORDINATES = LOCAL DATUM PLANE X 0.999932918
 WHP JOB NO. 830697 CADD FILE NAME: 10681REC.DGN

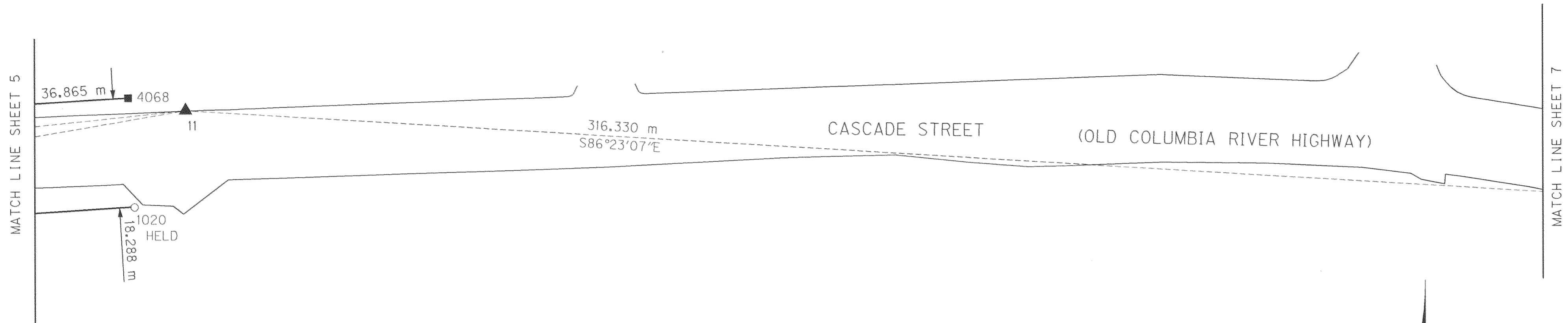


TO CONVERT METERS TO S. I. FEET DIVIDE BY 0.3048

OREGON DEPT. OF TRANSPORTATION
 HORIZONTAL CONTROL NETWORK,
 MONUMENT RECOVERY AND RIGHT-OF-WAY RETRACEMENT SURVEY
 COUNTRY CLUB ROAD TO MT. HOOD HIGHWAY
 HISTORIC COLUMBIA RIVER HIGHWAY
 WITHIN THE NATHANIEL COE D.L.C. NO. 37, THE WILLIAM JENKINS D.L.C. NO 38,
 LOCATED IN THE SW & SE 1/4 SECTION 25, THE SW & SE 1/4 SECTION 26,
 THE SE 1/4 SECTION 27, THE NE 1/4 SECTION 36,
 TOWNSHIP 3 NORTH, RANGE 10 EAST,
 AND WITHIN THE NATHANIEL BENSON D.L.C. NO 37,
 LOCATED IN THE SW 1/4 SECTION 30, THE NW 1/4 SECTION 31,
 TOWNSHIP 3 NORTH, RANGE 11 EAST,
 OF THE WILLAMETTE MERIDIAN, CITY OF HOOD RIVER,
 HOOD RIVER COUNTY, OREGON

DECEMBER 13, 2001 FOR O.D.O.T REGION 1 SURVEY GROUP
 123 NW FLANDERS, PORTLAND, OR. 97209-4037
 O.D.O.T. CONTRACT NO. 17708 KEY NO. 10681 SHEET 4 OF 19

CS # 2002.003



FILED

JAN 9 2002
Barclay Roberts
DEPUTY COUNTY SURVEYOR

W&H PACIFIC
8405 SW NIMBUS AVE.
BEAVERTON, OREGON
97008-7120
TEL: (503)626-0455
FAX: (503)526-0775
WWW.WHPACIFIC.COM

REGISTERED PROFESSIONAL LAND SURVEYOR
Pat Marquis
OREGON
JANUARY 20, 1989
PAT MARQUIS
2382
EXPIRES 12/31/02

SCALE 1:500

METRIC SURVEY

METERS
TO CONVERT METERS TO S. I. FEET DIVIDE BY 0.3048

LEGEND			
★	SET OR FOUND CONTROL POINT AS NOTED (ON SHEET 2 & 3)	—	EDGE OF ROADWAY
▲	SET NETWORK/TRaverse POINT AS NOTED (ON SHEET 2 & 3)	---	TRaverse LINE
○	FOUND MONUMENT AS NOTED	I	POINT NUMBER
■	CALCULATED COORDINATE POINT VALUE	AC	ALUMINUM CAP
		BD	BRASS DISK
		RPC	RED PLASTIC CAP
		YPC	YELLOW PLASTIC CAP
		DOC. NO	DOCUMENT NUMBER
		IR	IRON ROD
		IP	IRON PIPE
		CS	COUNTY SURVEY

CALCULATED COORDINATE POINT LIST

POINT	NORTHING	EASTING
4068	227701.792	2418914.688

RECOVERED MONUMENT LIST

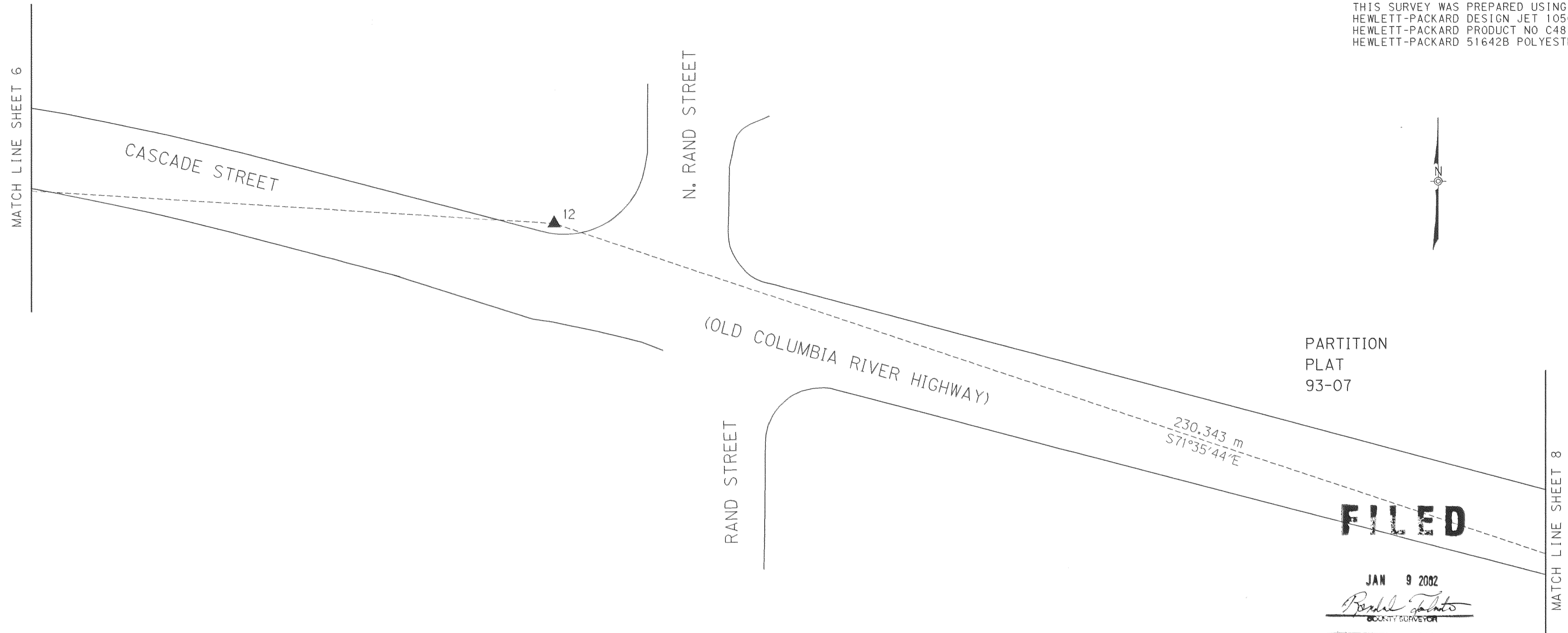
POINT	NORTHING	EASTING	ELEVATION	DESCRIPTION	ORIGIN
1020	227683.535	2418915.752	88.202	FND 1/2" IP FLUSH	CS 99019

(STATE PLANE COORDINATES = LOCAL DATUM PLANE X 0.999932918
WHP JOB NO. 830697 CADD FILE NAME: 10681REC.DGN

OREGON DEPT. OF TRANSPORTATION
HORIZONTAL CONTROL NETWORK,
MONUMENT RECOVERY AND RIGHT-OF-WAY RETRACEMENT SURVEY
COUNTRY CLUB ROAD TO MT. HOOD HIGHWAY
HISTORIC COLUMBIA RIVER HIGHWAY
WITHIN THE NATHANIEL COE D.L.C. NO. 37, THE WILLIAM JENKINS D.L.C. NO 38,
LOCATED IN THE SW & SE 1/4 SECTION 25, THE SW & SE 1/4 SECTION 26,
THE SE 1/4 SECTION 27, THE NE 1/4 SECTION 36,
TOWNSHIP 3 NORTH, RANGE 10 EAST,
AND WITHIN THE NATHANIEL BENSON D.L.C. NO 37,
LOCATED IN THE SW 1/4 SECTION 30, THE NW 1/4 SECTION 31,
TOWNSHIP 3 NORTH, RANGE 11 EAST,
OF THE WILLAMETTE MERIDIAN, CITY OF HOOD RIVER,
HOOD RIVER COUNTY, OREGON
DECEMBER 13, 2001 FOR O.D.O.T REGION 1 SURVEY GROUP
123 NW FLANDERS, PORTLAND, OR. 97209-4037
O.D.O.T. CONTRACT NO. 17708 KEY NO. 10681 SHEET 6 OF 19

CS# 2002 003

THIS SURVEY WAS PREPARED USING A
 HEWLETT-PACKARD DESIGN JET 1050C WITH
 HEWLETT-PACKARD PRODUCT NO C4871A ON
 HEWLETT-PACKARD 51642B POLYESTER FILM.



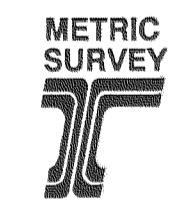
PARTITION
 PLAT
 93-07

FILED

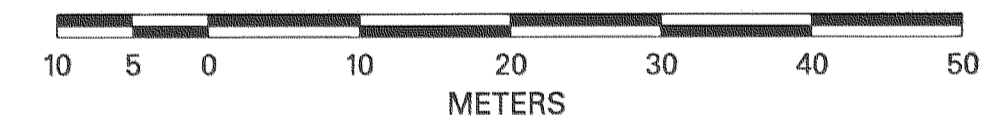
JAN 9 2002
Barbara Tolato
 COUNTY SURVEYOR
 DEPUTY

W&H PACIFIC
 8405 SW NIMBUS AVE.
 BEAVERTON, OREGON
 97008-7120
 TEL: (503)626-0455
 FAX: (503)526-0775
 WWW.WHPACIFIC.COM

REGISTERED
 PROFESSIONAL
 LAND SURVEYOR
Pat Marquis
 OREGON
 JANUARY 20, 1989
 PAT MARQUIS
 2382
 EXPIRES 12/31/02



SCALE 1:500

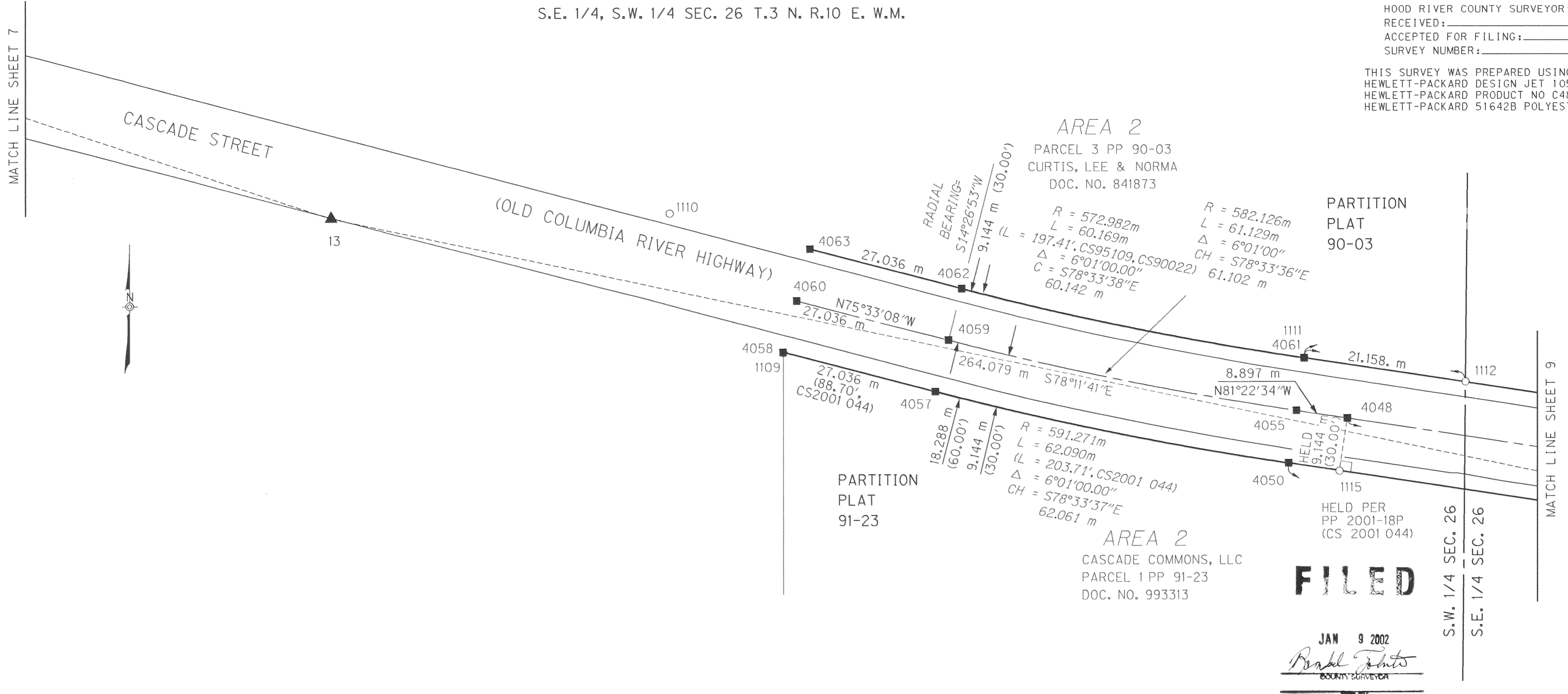


TO CONVERT METERS TO S. I. FEET DIVIDE BY 0.3048

LEGEND		
★ SET OR FOUND CONTROL POINT AS NOTED (ON SHEET 2 & 3)	—	EDGE OF ROADWAY
▲ SET NETWORK/TRVERSE POINT AS NOTED (ON SHEET 2 & 3)	—	RIGHT-OF-WAY LINE
○ FOUND MONUMENT AS NOTED	----	TRAVERSE LINE
■ CALCULATED COORDINATE POINT VALUE	1	POINT NUMBER
— DLC LINES	AC	ALUMINUM CAP
— SECTION LINE	BD	BRASS DISK
— QUARTER SEC. LINE	RPC	RED PLASTIC CAP
— PROPERTY LINE	YPC	YELLOW PLASTIC CAP
	DOC. NO	DOCUMENT NUMBER
	1R	IRON ROD
	1P	IRON PIPE

OREGON DEPT. OF TRANSPORTATION
 HORIZONTAL CONTROL NETWORK,
 MONUMENT RECOVERY AND RIGHT-OF-WAY RETRACEMENT SURVEY
 COUNTRY CLUB ROAD TO MT. HOOD HIGHWAY
 HISTORIC COLUMBIA RIVER HIGHWAY
 WITHIN THE NATHANIEL COE D.L.C. NO. 37, THE WILLIAM JENKINS D.L.C. NO 38,
 LOCATED IN THE SW & SE 1/4 SECTION 25, THE SW & SE 1/4 SECTION 26,
 THE SE 1/4 SECTION 27, THE NE 1/4 SECTION 36,
 TOWNSHIP 3 NORTH, RANGE 10 EAST,
 AND WITHIN THE NATHANIEL BENSON D.L.C. NO 37,
 LOCATED IN THE SW 1/4 SECTION 30, THE NW 1/4 SECTION 31,
 TOWNSHIP 3 NORTH, RANGE 11 EAST,
 OF THE WILLAMETTE MERIDIAN, CITY OF HOOD RIVER,
 HOOD RIVER COUNTY, OREGON
 DECEMBER 13, 2001 FOR O.D.O.T REGION 1 SURVEY GROUP
 123 NW FLANDERS, PORTLAND, OR. 97209-4037
 O.D.O.T. CONTRACT NO. 17708 KEY NO. 10681 SHEET 7 OF 19

THIS SURVEY WAS PREPARED USING A
 HEWLETT-PACKARD DESIGN JET 1050C WITH
 HEWLETT-PACKARD PRODUCT NO C4871A ON
 HEWLETT-PACKARD 51642B POLYESTER FILM.



LEGEND

★	SET OR FOUND CONTROL POINT AS NOTED (ON SHEET 2 & 3)	———	EDGE OF ROADWAY
▲	SET NETWORK/TRVERSE POINT AS NOTED (ON SHEET 2 & 3)	-----	RIGHT-OF-WAY LINE
○	FOUND MONUMENT AS NOTED	-----	TRAVERSE LINE
■	CALCULATED COORDINATE POINT VALUE	-----	CENTER LINE
—	DLC LINES	I	POINT NUMBER
—	SECTION LINE	AC	ALUMINUM CAP
—	QUARTER SEC. LINE	BD	BRASS DISK
—	PROPERTY LINE	RPC	RED PLASTIC CAP
CS	COUNTY SURVEYOR	DOC. NO	DOCUMENT NUMBER
(XX,CSXX)	RECORD DISTANCE ORIGIN	IR	IRON ROD
		IP	IRON PIPE
		PP	PARTITION PLAT

RECOVERED MONUMENT LIST

POINT	NORTHING	EASTING	ELEVATION	DESCRIPTION	ORIGIN
1109	227583.988	2419536.681	94.384	FND 2-1/2" BRASS DISC DOWN 228 mm STAMPED "1 LS 1815 1990"	CS 90089
1110	227607.934	2419517.030	94.256	FND 5/8" IR W/RPC "TERRA LS 1815" FLUSH LEANING SOUTH-TIED @ TOP	CS 95109
1111	227583.087	2419626.305	94.808	FND PK NAIL FLUSH	CS 95109
1112	227578.966	2419654.170	94.812	FND 1" IP FLUSH	CS 95109
1115	227563.670	2419632.405	94.852	FND 1" RIVET STAMPED "SURVEY MARK" FLUSH	UNKNOWN

CALCULATED COORDINATE POINT LIST

POINT	NORTHING	EASTING
4048	227572.711	2419633.776
4050	227565.000	2419623.638
4055	227574.045	2419624.979
4057	227577.309	2419562.810
4058	227584.054	2419536.629
4059	227586.164	2419565.091
4060	227592.909	2419538.910
4061	227583.090	2419626.320
4062	227595.018	2419567.373
4063	227601.764	2419541.192

W&H PACIFIC
 8405 SW NIMBUS AVE.
 BEAVERTON, OREGON
 97008-7120
 TEL: (503)626-0455
 FAX: (503)526-0775
 WWW.WHPACIFIC.COM

REGISTERED PROFESSIONAL LAND SURVEYOR
Pat Marquis
 OREGON
 JANUARY 20, 1989
 PAT MARQUIS
 2382
 EXPIRES 12/31/02

METRIC SURVEY

SCALE 1:500

10 5 0 10 20 30 40 50
 METERS

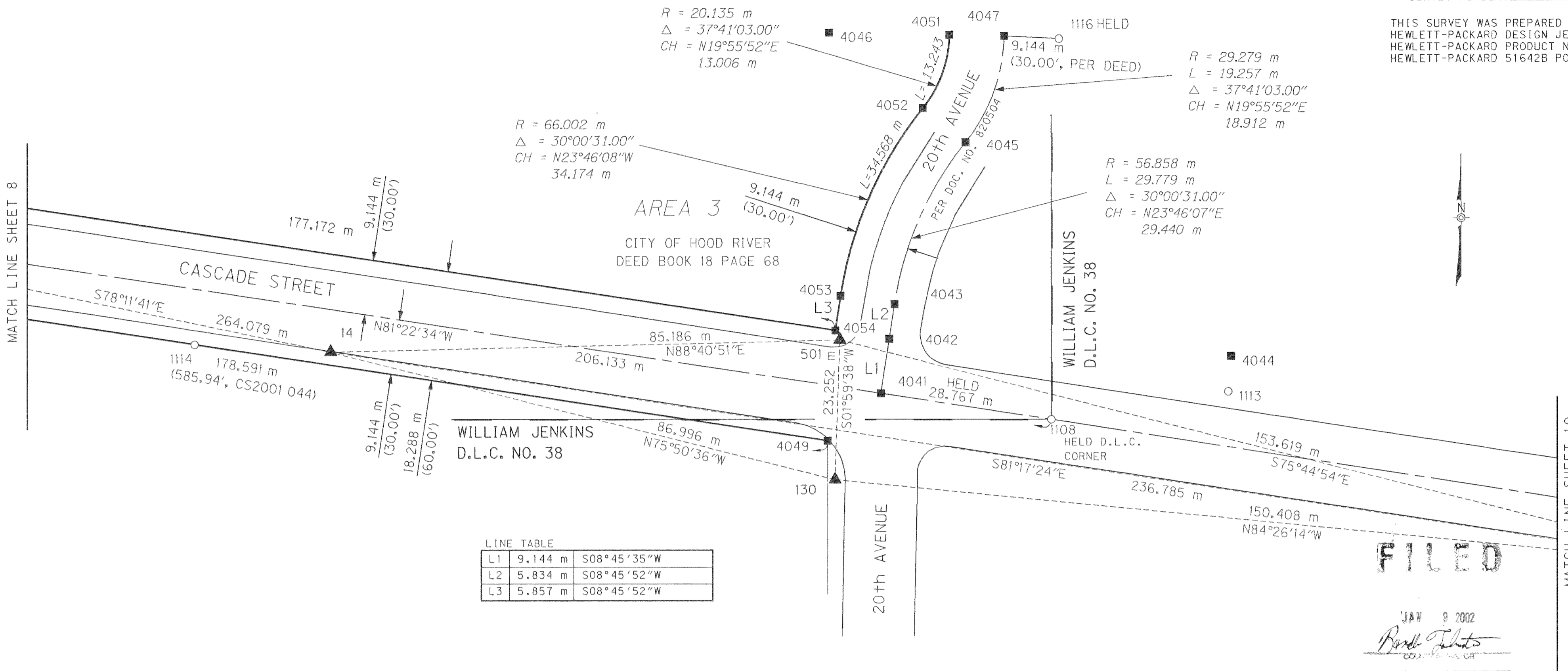
TO CONVERT METERS TO S. I. FEET DIVIDE BY 0.3048

OREGON DEPT. OF TRANSPORTATION
 HORIZONTAL CONTROL NETWORK,
 MONUMENT RECOVERY AND RIGHT-OF-WAY RETRACEMENT SURVEY
 COUNTRY CLUB ROAD TO MT. HOOD HIGHWAY
 HISTORIC COLUMBIA RIVER HIGHWAY

WITHIN THE NATHANIEL COE D.L.C. NO. 37, THE WILLIAM JENKINS D.L.C. NO 38,
 LOCATED IN THE SW & SE 1/4 SECTION 25, THE SW & SE 1/4 SECTION 26,
 THE SE 1/4 SECTION 27, THE NE 1/4 SECTION 36,
 TOWNSHIP 3 NORTH, RANGE 10 EAST,
 AND WITHIN THE NATHANIEL BENSON D.L.C. NO 37,
 LOCATED IN THE SW 1/4 SECTION 30, THE NW 1/4 SECTION 31,
 TOWNSHIP 3 NORTH, RANGE 11 EAST,
 OF THE WILLAMETTE MERIDIAN, CITY OF HOOD RIVER,
 HOOD RIVER COUNTY, OREGON

DECEMBER 13, 2001 FOR O.D.O.T REGION 1 SURVEY GROUP
 123 NW FLANDERS, PORTLAND, OR. 97209-4037
 O.D.O.T. CONTRACT NO. 17708 KEY NO. 10681 SHEET 8 OF 19

THIS SURVEY WAS PREPARED USING A
 HEWLETT-PACKARD DESIGN JET 1050C WITH
 HEWLETT-PACKARD PRODUCT NO C4871A ON
 HEWLETT-PACKARD 51642B POLYESTER FILM.



L1	9.144 m	S08°45'35"W
L2	5.834 m	S08°45'52"W
L3	5.857 m	S08°45'52"W

FILED
 JAN 9 2002
Pat Marquis
 OREGON
 JANUARY 20, 1989
 PAT MARQUIS
 2382
 EXPIRES 12/31/02

★ SET OR FOUND CONTROL POINT AS NOTED (ON SHEET 2 & 3)	—	EDGE OF ROADWAY
▲ SET NETWORK/TRaverse POINT AS NOTED (ON SHEET 2 & 3)	—	RIGHT-OF-WAY LINE
○ FOUND MONUMENT AS NOTED	---	TRAVERSE LINE
■ CALCULATED COORDINATE POINT VALUE	---	CENTER LINE
— DLC LINES	1	POINT NUMBER
— SECTION LINE	AC	ALUMINUM CAP
— QUARTER SEC. LINE	BD	BRASS DISK
— PROPERTY LINE	RPC	RED PLASTIC CAP
(XX,CSXX) RECORD DISTANCE ORIGIN	YPC	YELLOW PLASTIC CAP
	DOC. NO	DOCUMENT NUMBER
	IR	IRON ROD
	IP	IRON PIPE
	CS	COUNTY SURVEY

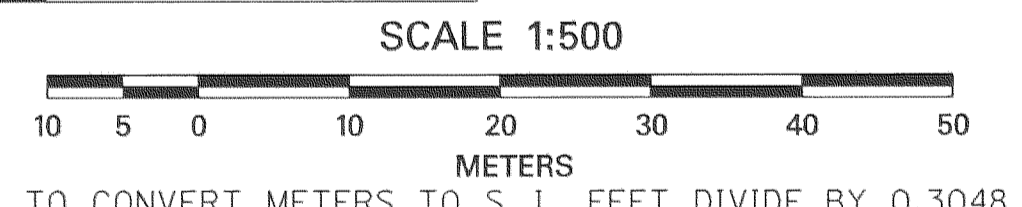
RECOVERED MONUMENT LIST

POINT	NORTHING	EASTING	ELEVATION	DESCRIPTION	ORIGIN
1108	227541.802	2419837.578	94.745	FND SCREW IN 2" LEAD PLUG IN STONE DOWN 431 mm IN MON BOX	DLC MON FOR WILLIAM JENKINS D.L.C. NO. 38 RESET BY COUNTY SURVEYOR
1113	227546.413	2419867.150	95.205	FND 5/8 " IR W/RPC "TERRA LS 1815" UP 101 mm	CS 97032
1114	227554.290	2419694.314	94.973	FND 1" RIVET STAMPED "SURVEY MARK" FLUSH	UNKNOWN
1116	227605.204	2419838.865	90.387	FND NAIL IN 1" IP DOWN 279 mm	UNKNOWN

CALCULATED COORDINATE POINT LIST

POINT	NORTHING	EASTING
4041	227546.116	2419809.137
4042	227555.153	2419810.529
4043	227560.919	2419811.419
4044	227552.259	2419867.612
4045	227587.862	2419823.285
4046	227606.197	2419800.454
4047	227605.641	2419829.731
4049	227538.221	2419800.210
4051	227605.815	2419820.589
4052	227593.588	2419816.156
4053	227562.313	2419802.382
4054	227556.524	2419801.489

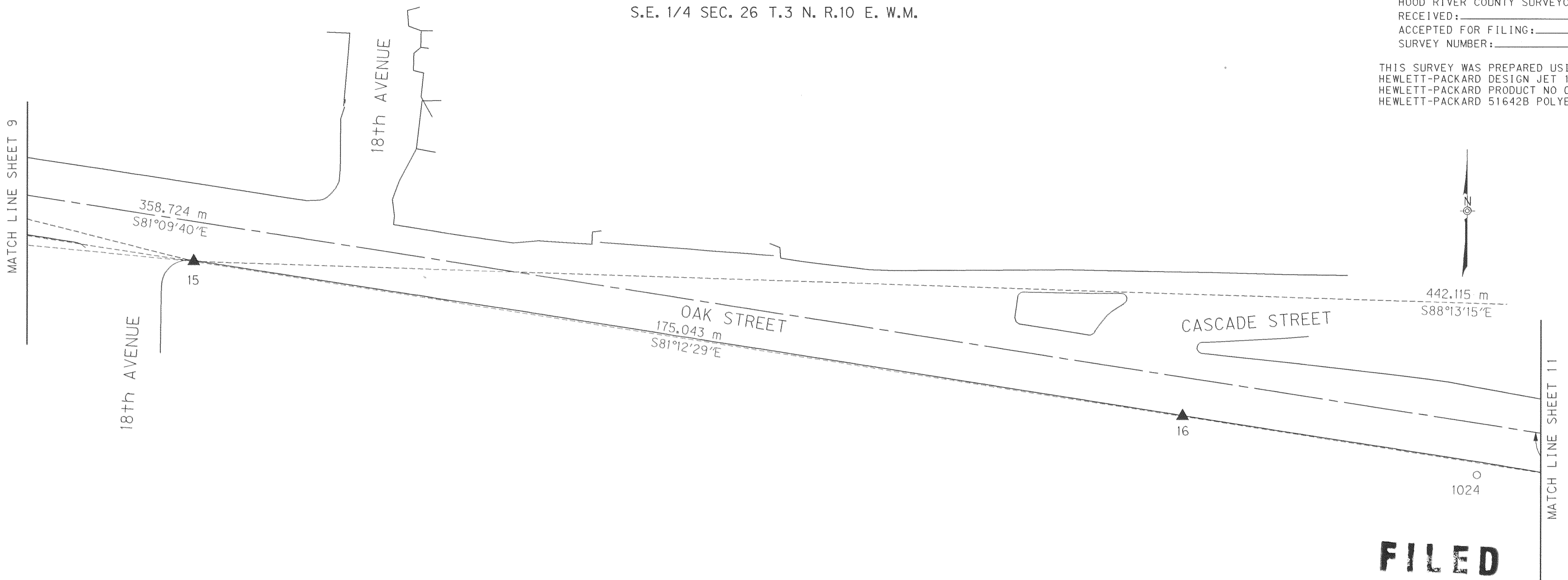
W&H PACIFIC
 8405 SW NIMBUS AVE.
 BEAVERTON, OREGON
 97008-7120
 TEL: (503)626-0455
 FAX: (503)526-0775
 WWW.WHPACIFIC.COM



OREGON DEPT. OF TRANSPORTATION
 HORIZONTAL CONTROL NETWORK,
 MONUMENT RECOVERY AND RIGHT-OF-WAY RETRACEMENT SURVEY
 COUNTRY CLUB ROAD TO MT. HOOD HIGHWAY
 HISTORIC COLUMBIA RIVER HIGHWAY
 WITHIN THE NATHANIEL COE D.L.C. NO. 37, THE WILLIAM JENKINS D.L.C. NO 38,
 LOCATED IN THE SW & SE 1/4 SECTION 25, THE SW & SE 1/4 SECTION 26,
 THE SE 1/4 SECTION 27, THE NE 1/4 SECTION 36,
 TOWNSHIP 3 NORTH, RANGE 10 EAST,
 AND WITHIN THE NATHANIEL BENSON D.L.C. NO 37,
 LOCATED IN THE SW 1/4 SECTION 30, THE NW 1/4 SECTION 31,
 TOWNSHIP 3 NORTH, RANGE 11 EAST,
 OF THE WILLAMETTE MERIDIAN, CITY OF HOOD RIVER,
 HOOD RIVER COUNTY, OREGON

DECEMBER 13, 2001 FOR O.D.O.T REGION 1 SURVEY GROUP
 123 NW FLANDERS, PORTLAND, OR. 97209-4037
 O.D.O.T. CONTRACT NO. 17708 KEY NO. 10681 SHEET 9 OF 19

THIS SURVEY WAS PREPARED USING A
 HEWLETT-PACKARD DESIGN JET 1050C WITH
 HEWLETT-PACKARD PRODUCT NO C4871A ON
 HEWLETT-PACKARD 51642B POLYESTER FILM.



JAN 9 2002
Rodolfo J. Pinto
 COUNTY SURVEYOR
 DEPUTY

W&H PACIFIC
 8405 SW NIMBUS AVE.
 BEAVERTON, OREGON
 97008-7120
 TEL: (503)626-0455
 FAX: (503)526-0775
 WWW.WHPACIFIC.COM

REGISTERED
 PROFESSIONAL
 LAND SURVEYOR
Pat Marquis
 OREGON
 JANUARY 20, 1989
 PAT MARQUIS
 2382
 EXPIRES 12/31/02

METRIC SURVEY

SCALE 1:500

 10 5 0 10 20 30 40 50
 METERS
 TO CONVERT METERS TO S. I. FEET DIVIDE BY 0.3048

OREGON DEPT. OF TRANSPORTATION
 HORIZONTAL CONTROL NETWORK,
 MONUMENT RECOVERY AND RIGHT-OF-WAY RETRACEMENT SURVEY
 COUNTRY CLUB ROAD TO MT. HOOD HIGHWAY
 HISTORIC COLUMBIA RIVER HIGHWAY
 WITHIN THE NATHANIEL COE D.L.C. NO. 37, THE WILLIAM JENKINS D.L.C. NO 38,
 LOCATED IN THE SW & SE 1/4 SECTION 25, THE SW & SE 1/4 SECTION 26,
 THE SE 1/4 SECTION 27, THE NE 1/4 SECTION 36,
 TOWNSHIP 3 NORTH, RANGE 10 EAST,
 AND WITHIN THE NATHANIEL BENSON D.L.C. NO 37,
 LOCATED IN THE SW 1/4 SECTION 30, THE NW 1/4 SECTION 31,
 TOWNSHIP 3 NORTH, RANGE 11 EAST,
 OF THE WILLAMETTE MERIDIAN, CITY OF HOOD RIVER,
 HOOD RIVER COUNTY, OREGON
 DECEMBER 13, 2001 FOR O.D.O.T REGION 1 SURVEY GROUP
 123 NW FLANDERS, PORTLAND, OR. 97209-4037
 O.D.O.T. CONTRACT NO. 17708 KEY NO. 10681 SHEET 10 OF 19

LEGEND

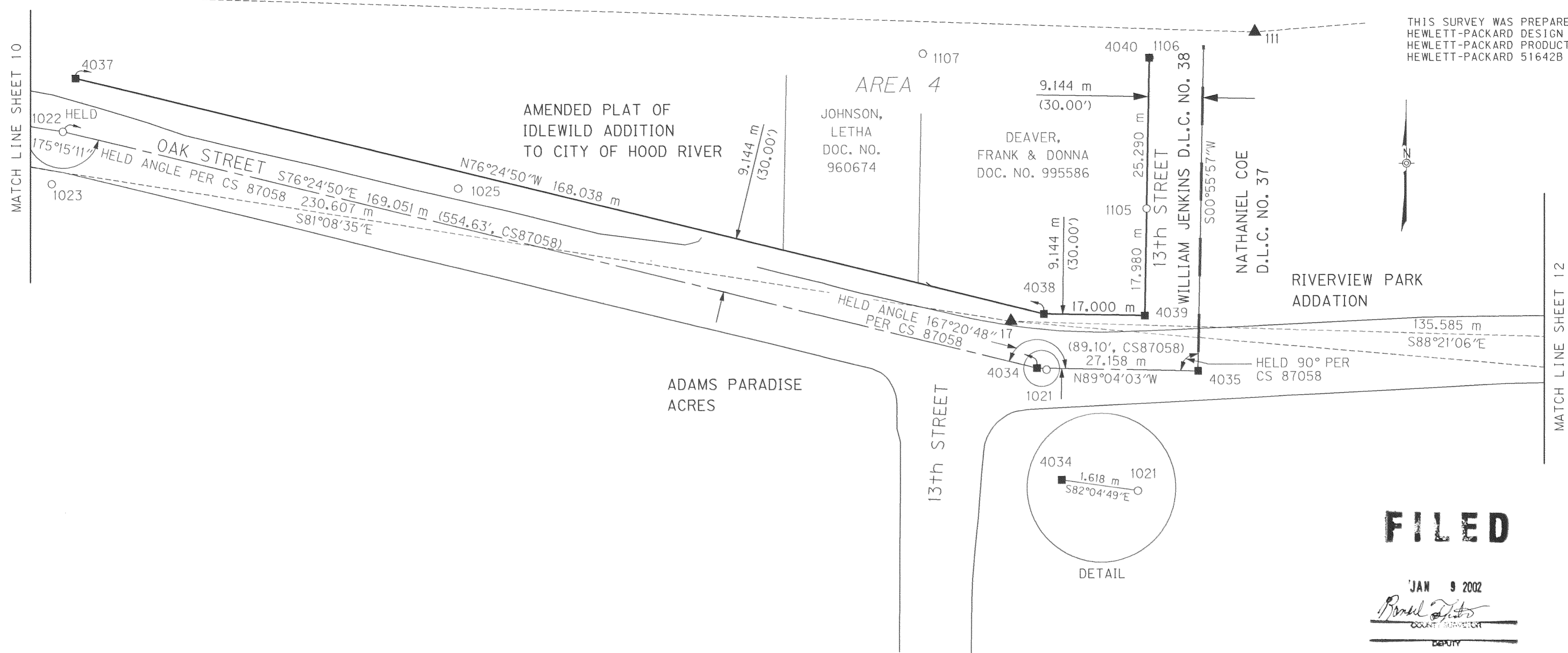
★ SET OR FOUND CONTROL POINT AS NOTED (ON SHEET 2 & 3)	— EDGE OF ROADWAY
▲ SET NETWORK/TRVERSE POINT AS NOTED (ON SHEET 2 & 3)	— RIGHT-OF-WAY LINE
○ FOUND MONUMENT AS NOTED	- - - - - TRAVERSE LINE
■ CALCULATED COORDINATE POINT VALUE	- - - - - CENTER LINE
— DLC LINES	I POINT NUMBER
— SECTION LINE	AC ALUMINUM CAP
- - - - - QUARTER SEC. LINE	BD BRASS DISK
— PROPERTY LINE	RPC RED PLASTIC CAP
	YPC YELLOW PLASTIC CAP
	DOC. NO DOCUMENT NUMBER
	IR IRON ROD
	IP IRON PIPE
	CS COUNTY SURVEY

RECOVERED MONUMENT LIST

POINT	NORTHING	EASTING	ELEVATION	DESCRIPTION	ORIGIN
1024	227480.236	2420175.622	90.431	FND 1-1/4" OUTSIDE DIAMETER 1P W/ 2-1/2" BRASS CAP UP 330 mm STAMPED "TRANTOW SURVEYING PLS 15673-1990 1799 OR PROP COR"	CS 88036 RESET 6-11-90

(STATE PLANE COORDINATES = LOCAL DATUM PLANE X 0.999932918
 WHP JOB NO. 830697 CADD FILE NAME: 10681REC.DGN

THIS SURVEY WAS PREPARED USING A
 HEWLETT-PACKARD DESIGN JET 1050C WITH
 HEWLETT-PACKARD PRODUCT NO C4871A ON
 HEWLETT-PACKARD 51642B POLYESTER FILM.



FILED

JAN 9 2002

Ronald D. Dittus
 COUNTY SURVEYOR
 DEPUTY

W&H PACIFIC
 8405 SW NIMBUS AVE.
 BEAVERTON, OREGON
 97008-7120
 TEL: (503)626-0455
 FAX: (503)526-0775
 WWW.WHPACIFIC.COM

REGISTERED PROFESSIONAL LAND SURVEYOR
Pat Marquis
 OREGON
 JANUARY 20, 1989
 PAT MARQUIS
 2382
 EXPIRES 12/31/02

LEGEND			
★	SET OR FOUND CONTROL POINT AS NOTED (ON SHEET 2 & 3)	—	EDGE OF ROADWAY
▲	SET NETWORK/TRVERSE POINT AS NOTED (ON SHEET 2 & 3)	----	RIGHT-OF-WAY LINE
○	FOUND MONUMENT AS NOTED	----	TRAVERSE LINE
■	CALCULATED COORDINATE POINT VALUE	----	CENTER LINE
—	DLC LINES	1	POINT NUMBER
—	SECTION LINE	AC	ALUMINUM CAP
---	QUARTER SEC. LINE	BD	BRASS DISK
---	PROPERTY LINE	RPC	RED PLASTIC CAP
(XX,CSXX)	RECORD DISTANCE ORIGIN	YPC	YELLOW PLASTIC CAP
		DOC. NO	DOCUMENT NUMBER
		IR	IRON ROD
		IP	IRON PIPE
		CS	COUNTY SURVEY

RECOVERED MONUMENT LIST

POINT	NORTHING	EASTING	ELEVATION	DESCRIPTION	ORIGIN
1021	227446.749	2420357.967	90.102	FND 1" IP DOWN 330 mm IN MON BOX	J.L.H. COUNTY SURVEYOR
1022	227486.683	2420192.043	89.748	FND 3" LEAD PLUG W/PUNCH MARK IN STONE DOWN 279 mm IN MON BOX	J.L.H. COUNTY SURVEYOR
1023	227477.862	2420190.184	90.464	FND 5/8 " IR W/YPC "WASH 15673-ORE 1799" UP 127 mm	CS 88036
1105	227473.800	2420374.814	85.818	FND 1/2 " IR UP 102 mm"	CS 87063
1106	227499.086	2420375.259	81.044	FND 1/2 " IR W/YPC "LS 1028" IN SIDE SLOPE	CS 87063
1107	227499.761	2420337.104	81.902	FND 1/2 " IR W/YPC "LS 1028" FLUSH	CS 87063

CALCULATED COORDINATE POINT LIST

POINT	NORTHING	EASTING
4034	227446.972	2420356.364
4035	227446.530	2420383.518
4037	227495.571	2420194.191
4038	227456.099	2420357.527
4039	227455.822	2420374.524
4040	227499.087	2420375.228

METRIC SURVEY

 SCALE 1:500

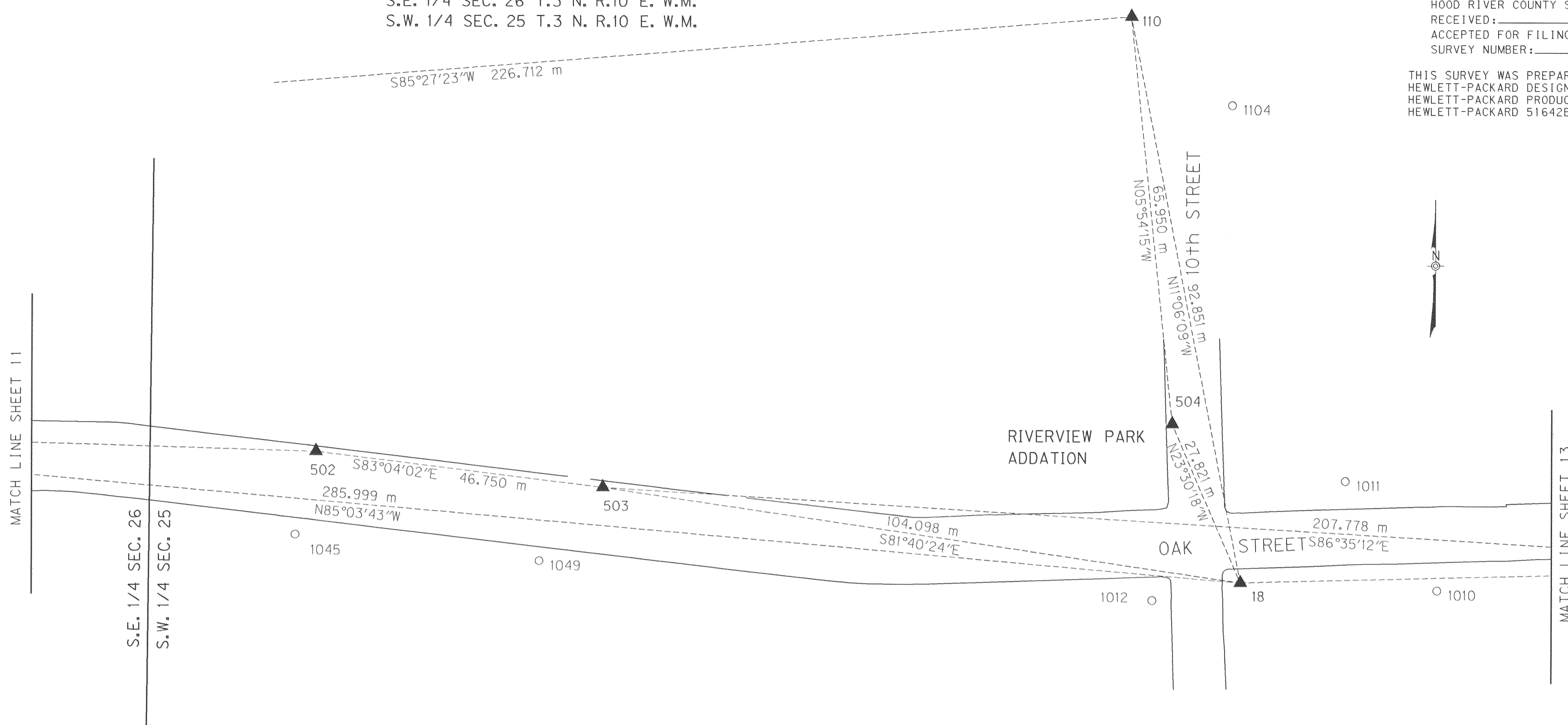
 TO CONVERT METERS TO S. I. FEET DIVIDE BY 0.3048

OREGON DEPT. OF TRANSPORTATION
 HORIZONTAL CONTROL NETWORK,
 MONUMENT RECOVERY AND RIGHT-OF-WAY RETRACEMENT SURVEY
 COUNTRY CLUB ROAD TO MT. HOOD HIGHWAY
 HISTORIC COLUMBIA RIVER HIGHWAY
 WITHIN THE NATHANIEL COE D.L.C. NO. 37, THE WILLIAM JENKINS D.L.C. NO 38,
 LOCATED IN THE SW & SE 1/4 SECTION 25, THE SW & SE 1/4 SECTION 26,
 THE SE 1/4 SECTION 27, THE NE 1/4 SECTION 36,
 TOWNSHIP 3 NORTH, RANGE 10 EAST,
 AND WITHIN THE NATHANIEL BENSON D.L.C. NO 37,
 LOCATED IN THE SW 1/4 SECTION 30, THE NW 1/4 SECTION 31,
 TOWNSHIP 3 NORTH, RANGE 11 EAST,
 OF THE WILLAMETTE MERIDIAN, CITY OF HOOD RIVER,
 HOOD RIVER COUNTY, OREGON
 DECEMBER 13, 2001 FOR O.D.O.T REGION 1 SURVEY GROUP
 123 NW FLANDERS, PORTLAND, OR. 97209-4037
 O.D.O.T. CONTRACT NO. 17708 KEY NO. 10681 SHEET 11 OF 19

S.E. 1/4 SEC. 26 T.3 N. R.10 E. W.M.
 S.W. 1/4 SEC. 25 T.3 N. R.10 E. W.M.

HOOD RIVER COUNTY SURVEYOR'S OFFICE
 RECEIVED: _____
 ACCEPTED FOR FILING: _____
 SURVEY NUMBER: _____

THIS SURVEY WAS PREPARED USING A
 HEWLETT-PACKARD DESIGN JET 1050C WITH
 HEWLETT-PACKARD PRODUCT NO C4871A ON
 HEWLETT-PACKARD 51642B POLYESTER FILM.



FILED

JAN 9 2002

Barclay Feltz
 COUNTY SURVEYOR

W&H PACIFIC
 8405 SW NIMBUS AVE.
 BEAVERTON, OREGON
 97008-7120
 TEL: (503)626-0455
 FAX: (503)526-0775
 WWW.WHPACIFIC.COM

REGISTERED
 PROFESSIONAL
 LAND SURVEYOR
Pat Marquis
 OREGON
 JANUARY 20, 1989
 PAT MARQUIS
 2382
 EXPIRES 12/31/02

LEGEND		
★ SET OR FOUND CONTROL POINT AS NOTED (ON SHEET 2 & 3)	————	EDGE OF ROADWAY
▲ SET NETWORK/TRVERSE POINT AS NOTED (ON SHEET 2 & 3)	-----	RIGHT-OF-WAY LINE
○ FOUND MONUMENT AS NOTED	-----	TRAVERSE LINE
■ CALCULATED COORDINATE POINT VALUE	-----	CENTER LINE
————	1	POINT NUMBER
————	AC	ALUMINUM CAP
————	BD	BRASS DISK
————	RPC	RED PLASTIC CAP
————	YPC	YELLOW PLASTIC CAP
-----	DOC. NO	DOCUMENT NUMBER
-----	IR	IRON ROD
-----	IP	IRON PIPE
-----	CS	COUNTY SURVEY

RECOVERED MONUMENT LIST

POINT	NORTHING	EASTING	ELEVATION	DESCRIPTION	ORIGIN
1010	227429.074	2420668.669	83.784	FND 3/4 " IP DOWN 88 mm	UNKNOWN
1011	227446.687	2420653.801	82.269	FND 5/8 " IR FLUSH IN TREE ROOT	CS 7328
1012	227427.423	2420622.655	84.461	FND 5/8 " IR FLUSH	CS 79005
1045	227437.670	2420484.168	87.115	FND RR SPIKE W/"X" FLUSH	CS 79005
1049	227433.490	2420523.636	85.761	FND 5/8" IR DOWN 76 mm	CS 79005
1104	227507.137	2420635.389	74.190	FND 5"x6" STONE W/"X" FLUSH	UNKNOWN

(STATE PLANE COORDINATES = LOCAL DATUM PLANE X 0.999932918 WHP JOB NO. 830697 CADD FILE NAME: 10681REC.DGN



SCALE 1:500



TO CONVERT METERS TO S. I. FEET DIVIDE BY 0.3048

OREGON DEPT. OF TRANSPORTATION
 HORIZONTAL CONTROL NETWORK,
 MONUMENT RECOVERY AND RIGHT-OF-WAY RETRACEMENT SURVEY
 COUNTRY CLUB ROAD TO MT. HOOD HIGHWAY
 HISTORIC COLUMBIA RIVER HIGHWAY
 WITHIN THE NATHANIEL COE D.L.C. NO. 37, THE WILLIAM JENKINS D.L.C. NO 38,
 LOCATED IN THE SW & SE 1/4 SECTION 25, THE SW & SE 1/4 SECTION 26,
 THE SE 1/4 SECTION 27, THE NE 1/4 SECTION 36,
 TOWNSHIP 3 NORTH, RANGE 10 EAST,
 AND WITHIN THE NATHANIEL BENSON D.L.C. NO 37,
 LOCATED IN THE SW 1/4 SECTION 30, THE NW 1/4 SECTION 31,
 TOWNSHIP 3 NORTH, RANGE 11 EAST,
 OF THE WILLAMETTE MERIDIAN, CITY OF HOOD RIVER,
 HOOD RIVER COUNTY, OREGON

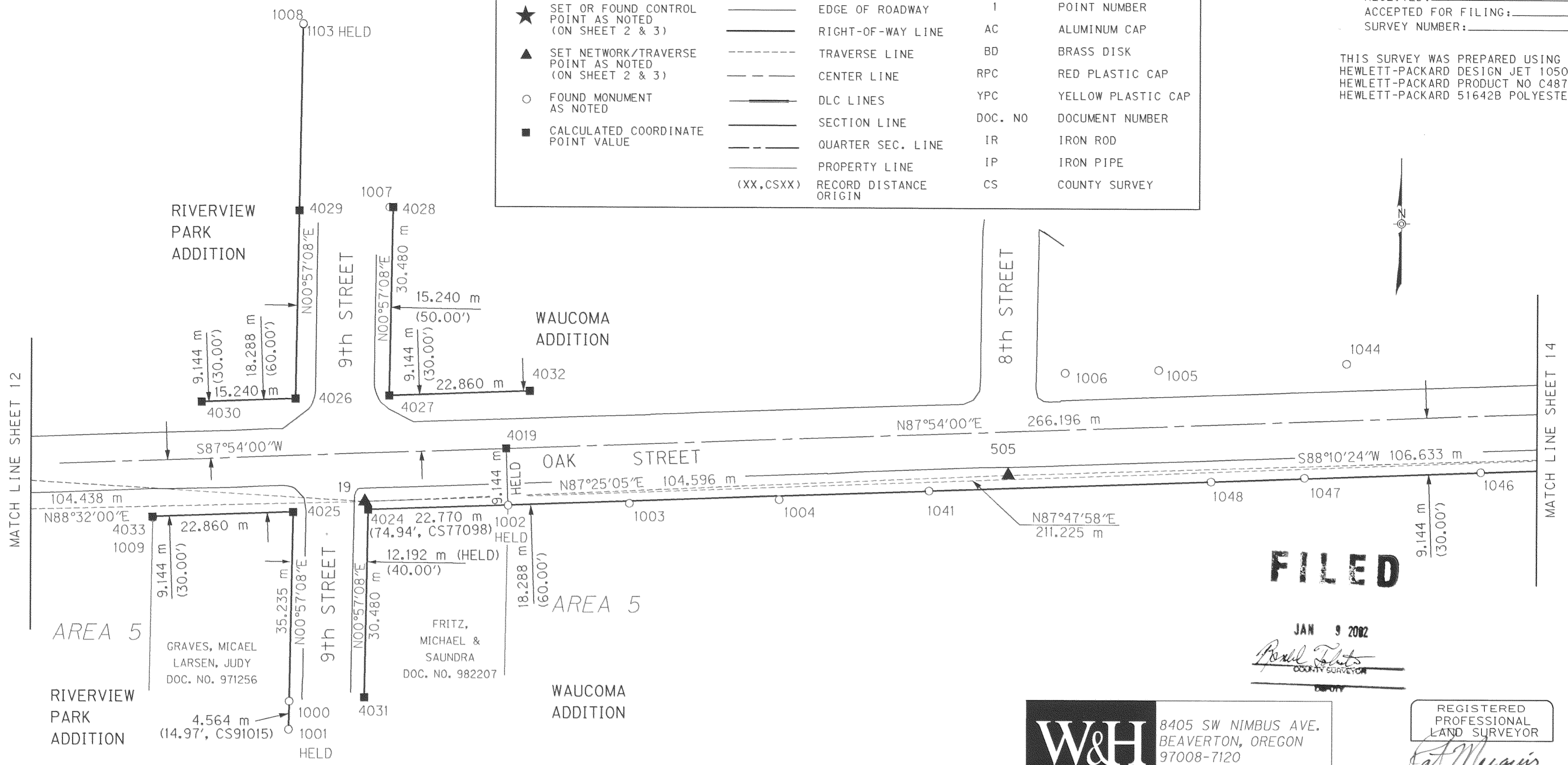
DECEMBER 13, 2001 FOR O.D.O.T REGION 1 SURVEY GROUP
 123 NW FLANDERS, PORTLAND, OR. 97209-4037
 O.D.O.T. CONTRACT NO. 17708 KEY NO. 10681 SHEET 12 OF 19

CS # 2002 003

LEGEND			
★	SET OR FOUND CONTROL POINT AS NOTED (ON SHEET 2 & 3)	—	EDGE OF ROADWAY
▲	SET NETWORK/TRVERSE POINT AS NOTED (ON SHEET 2 & 3)	—	RIGHT-OF-WAY LINE
○	FOUND MONUMENT AS NOTED	- - - -	TRAVERSE LINE
■	CALCULATED COORDINATE POINT VALUE	- · - · -	CENTER LINE
		—	DLC LINES
		—	SECTION LINE
		—	QUARTER SEC. LINE
		—	PROPERTY LINE
	(XX,CSXX)	—	RECORD DISTANCE ORIGIN
I	POINT NUMBER		
AC	ALUMINUM CAP		
BD	BRASS DISK		
RPC	RED PLASTIC CAP		
YPC	YELLOW PLASTIC CAP		
DOC. NO	DOCUMENT NUMBER		
IR	IRON ROD		
IP	IRON PIPE		
CS	COUNTY SURVEY		

HOOD RIVER COUNTY SURVEYOR'S OFFICE
 RECEIVED: _____
 ACCEPTED FOR FILING: _____
 SURVEY NUMBER: _____

THIS SURVEY WAS PREPARED USING A
 HEWLETT-PACKARD DESIGN JET 1050C WITH
 HEWLETT-PACKARD PRODUCT NO C4871A ON
 HEWLETT-PACKARD 51642B POLYESTER FILM.



FILED

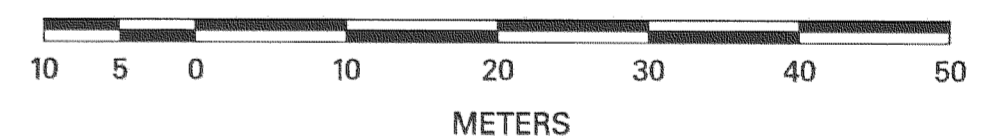
JAN 9 2002
Paul Felt
 COUNTY SURVEYOR



8405 SW NIMBUS AVE.
 BEAVERTON, OREGON
 97008-7120
 TEL: (503)626-0455
 FAX: (503)526-0775
 WWW.WHPACIFIC.COM

REGISTERED
 PROFESSIONAL
 LAND SURVEYOR
Pat Marquis
 OREGON
 JANUARY 20, 1989
 PAT MARQUIS
 2382
 EXPIRES 12/31/02

SCALE 1:500



TO CONVERT METERS TO S. I. FEET DIVIDE BY 0.3048

RECOVERED MONUMENT LIST

POINT	NORTHING	EASTING	ELEVATION	DESCRIPTION	ORIGIN
1000	227400.547	2420729.137	86.415	FND 1/2" IR W/YPC "LS 1028" FLUSH	CS 91015
1001	227395.983	2420729.071	86.804	FND 1/2" IR W/YPC "LS 1028" FLUSH	CS 91015
1002	227432.495	2420764.612	81.554	FND 3/8 " IR FLUSH	CS 77098
1003	227432.871	2420784.343	80.862	FND 1" YPC FLUSH "WYEAST PLS 2393"	CS 2001 067
1004	227433.572	2420808.659	79.660	FND 1" YPC FLUSH "WYEAST PLS 2393"	CS 2001 067
1005	227454.679	2420870.166	72.869	FND 3/4 " IP DOWN 88mm	UNKNOWN
1006	227454.175	2420854.975	73.796	FND 3/4 " IP DOWN 88mm	UNKNOWN
1007	227480.590	2420745.163	75.451	FND 3/4 " IP DOWN 63mm	CS 0688
1008	227510.310	2420730.969	71.292	FND 5/8 " IR FLUSH	UNKNOWN
1009	227430.247	2420706.848	83.077	FND 1-1/2" IP DOWN 152mm	UNKNOWN
1041	227435.081	2420832.981	78.249	FND 5/8" IR UP 101mm LEANING NORTH	CS 84036
1044	227455.806	2420900.672	71.095	FND 1" IP FLUSH	UNKNOWN
1046	227438.404	2420922.542	72.418	FND 1/2" IP FLUSH	UNKNOWN
1047	227437.397	2420893.903	74.117	FND NAIL IN 1/2" IP, FLUSH	UNKNOWN
1048	227436.747	2420878.747	75.156	FND 5/8" IR W/RPC, FLUSH, "PLS 896"	UNKNOWN
1103	227510.215	2420730.969	71.189	FND 6" SQUARE STONE W/"X" DOWN 203mm	RIVER VIEW PARK ADDN.
1200	227437.396	2420893.907	74.121	FND 1/2" IP W/NAIL CENTER	CS 88007
1201	227436.749	2420878.748	75.155	FND 5/8" IR/RPC "LS 806"	CS 88007
1202	227454.676	2420870.165	72.867	FND 3/4" IP	UNKNOWN
1203	227455.803	2420900.668	71.122	FND 3/4" IP	UNKNOWN

CALCULATED COORDINATE POINT LIST

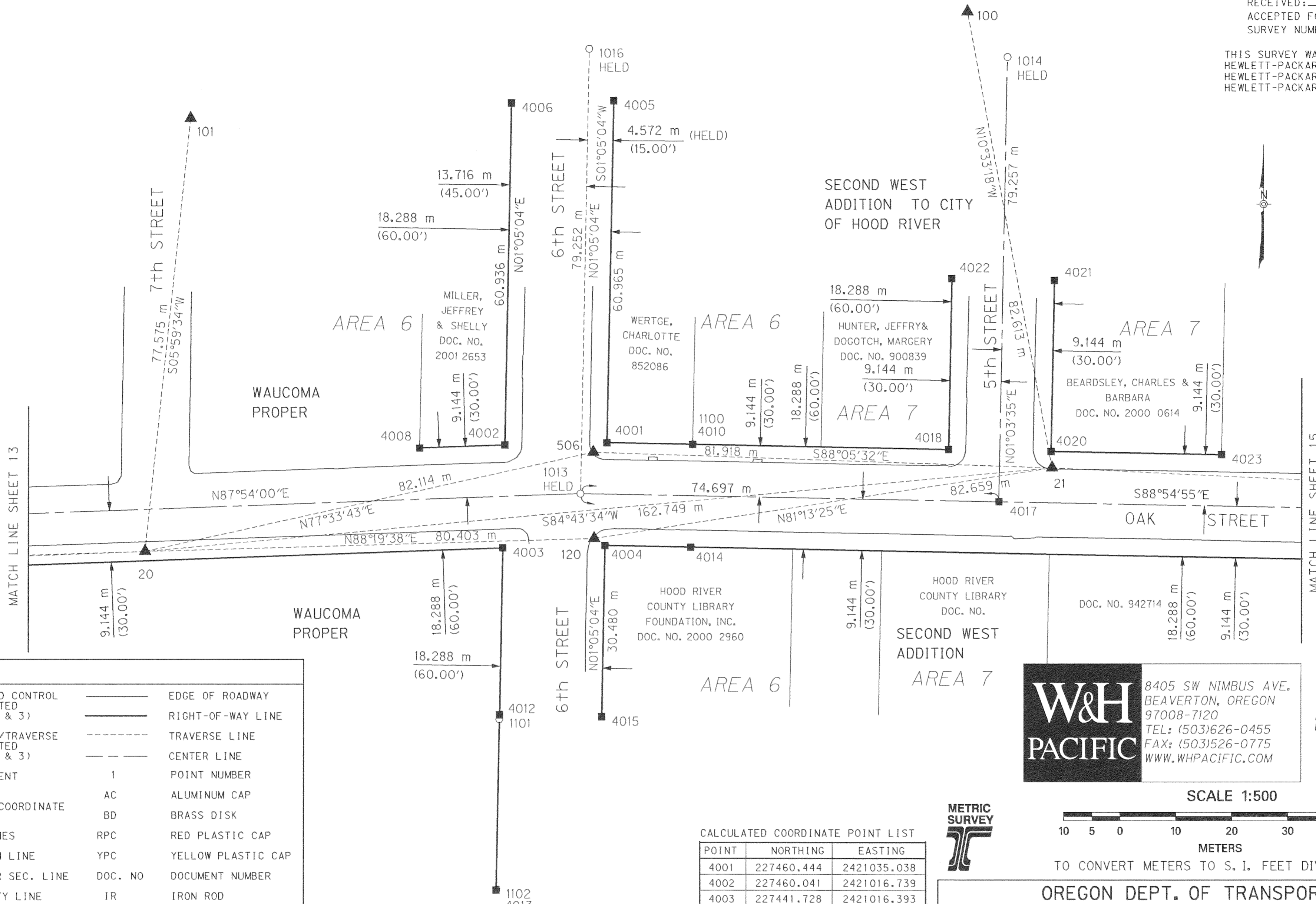
POINT	NORTHING	EASTING
4019	227441.633	2420764.277
4024	227431.661	2420741.857
4025	227431.214	2420729.656
4026	227449.525	2420729.961
4027	227450.084	2420745.212
4028	227480.560	2420745.719
4029	227480.001	2420730.467
4030	227448.967	2420714.731
4031	227401.185	2420741.351
4032	227450.922	2420768.057
4033	227430.376	2420706.812

OREGON DEPT. OF TRANSPORTATION
 HORIZONTAL CONTROL NETWORK,
 MONUMENT RECOVERY AND RIGHT-OF-WAY RETRACEMENT SURVEY
 COUNTRY CLUB ROAD TO MT. HOOD HIGHWAY
 HISTORIC COLUMBIA RIVER HIGHWAY
 WITHIN THE NATHANIEL COE D.L.C. NO. 37, THE WILLIAM JENKINS D.L.C. NO 38,
 LOCATED IN THE SW & SE 1/4 SECTION 25, THE SW & SE 1/4 SECTION 26,
 THE SE 1/4 SECTION 27, THE NE 1/4 SECTION 36,
 TOWNSHIP 3 NORTH, RANGE 10 EAST,
 AND WITHIN THE NATHANIEL BENSON D.L.C. NO 37,
 LOCATED IN THE SW 1/4 SECTION 30, THE NW 1/4 SECTION 31,
 TOWNSHIP 3 NORTH, RANGE 11 EAST,
 OF THE WILLAMETTE MERIDIAN, CITY OF HOOD RIVER,
 HOOD RIVER COUNTY, OREGON

DECEMBER 13, 2001 FOR O.D.O.T REGION 1 SURVEY GROUP
 123 NW FLANDERS, PORTLAND, OR. 97209-4037
 O.D.O.T. CONTRACT NO. 17708 KEY NO. 10681 SHEET 13 OF 19

CS # 2002 003

THIS SURVEY WAS PREPARED USING A
 HEWLETT-PACKARD DESIGN JET 1050C WITH
 HEWLETT-PACKARD PRODUCT NO C4871A ON
 HEWLETT-PACKARD 51642B POLYESTER FILM.



FILED
 JAN 9 2002
Boyd Feltz
 COUNTY SURVEYOR

LEGEND

★ SET OR FOUND CONTROL POINT AS NOTED (ON SHEET 2 & 3)	— EDGE OF ROADWAY
▲ SET NETWORK/TRVERSE POINT AS NOTED (ON SHEET 2 & 3)	— RIGHT-OF-WAY LINE
○ FOUND MONUMENT AS NOTED	----- TRAVERSE LINE
■ CALCULATED COORDINATE POINT VALUE	----- CENTER LINE
— DLC LINES	1 POINT NUMBER
— SECTION LINE	AC ALUMINUM CAP
--- QUARTER SEC. LINE	BD BRASS DISK
— PROPERTY LINE	RPC RED PLASTIC CAP
	YPC YELLOW PLASTIC CAP
	DOC. NO DOCUMENT NUMBER
	IR IRON ROD
	IP IRON PIPE
	CS COUNTY SURVEY

RECOVERED MONUMENT LIST

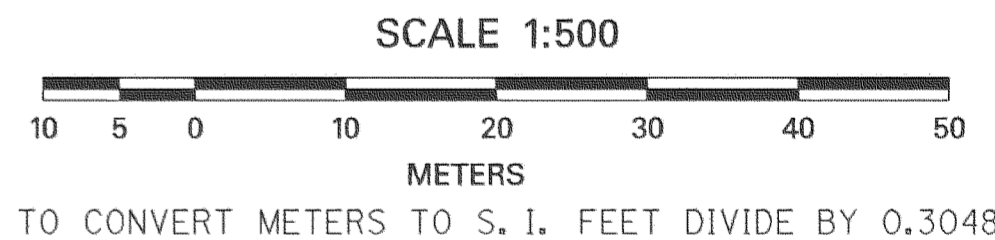
POINT	NORTHING	EASTING	ELEVATION	DESCRIPTION	ORIGIN
1013	227451.388	2421030.294	63.301	FND STONE W/"X" DOWN 177 mm IN MON BOX	CITY MON. NO. 3
1014	227529.217	2421106.445	50.177	FND 3-1/8" AC DISK DOWN 139 mm IN MON BOX "1992 LS 872"	CITY MON NO. UNKNOWN
1016	227530.626	2421031.794	54.327	FND 3-1/8" AC DISK DOWN 88 mm IN MON BOX "1992 LS 872"	CITY MON NO. 9
1100	227460.178	2421050.257	60.806	FND 5/8 " IR W/YPC "KLEIN & ASSOC. OR 932 WA 22098" UP 114 mm	CS 95018
1101	227411.290	2421015.803	70.644	FND 1/2 " IR W/YPC "LS 1028" UP 152 mm	CS 87005
1102	227380.873	2421015.269	74.671	FND 1/2 " IR W/YPC "LS 1028" FLUSH	CS 87005
1204	227440.686	2420986.011	68.427	FND 5/8"IR/YPC "LS1028"	CS 84025

CALCULATED COORDINATE POINT LIST

POINT	NORTHING	EASTING
4001	227460.444	2421035.038
4002	227460.041	2421016.739
4003	227441.728	2421016.393
4004	227442.159	2421034.692
4005	227521.397	2421036.192
4006	227520.966	2421017.893
4007	227490.503	2421017.316
4008	227459.482	2421001.510
4009	227490.920	2421035.615
4010	227460.155	2421050.278
4012	227412.036	2421015.831
4013	227380.794	2421015.240
4014	227441.870	2421049.932
4015	227411.684	2421034.116
4017	227449.974	2421104.979
4018	227459.289	2421096.006
4020	227458.943	2421114.291
4021	227489.418	2421114.854
4022	227489.764	2421096.570
4023	227458.366	2421144.765

W&H PACIFIC
 8405 SW NIMBUS AVE.
 BEAVERTON, OREGON
 97008-7120
 TEL: (503)626-0455
 FAX: (503)526-0775
 WWW.WHPACIFIC.COM

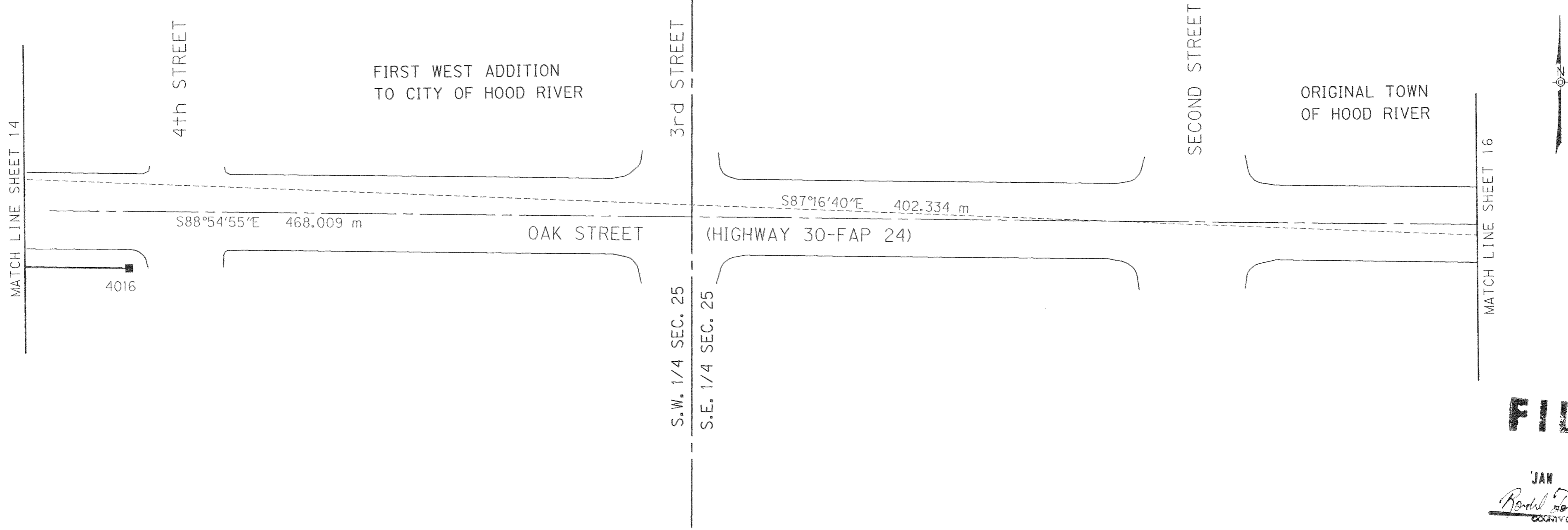
REGISTERED PROFESSIONAL LAND SURVEYOR
Pat Marquis
 OREGON
 JANUARY 20, 1989
 PAT MARQUIS
 2382
 EXPIRES 12/31/02



OREGON DEPT. OF TRANSPORTATION
 HORIZONTAL CONTROL NETWORK,
 MONUMENT RECOVERY AND RIGHT-OF-WAY RETRACEMENT SURVEY
 COUNTRY CLUB ROAD TO MT. HOOD HIGHWAY
 HISTORIC COLUMBIA RIVER HIGHWAY
 WITHIN THE NATHANIEL COE D.L.C. NO. 37, THE WILLIAM JENKINS D.L.C. NO 38,
 LOCATED IN THE SW & SE 1/4 SECTION 25, THE SW & SE 1/4 SECTION 26,
 THE SE 1/4 SECTION 27, THE NE 1/4 SECTION 36,
 TOWNSHIP 3 NORTH, RANGE 10 EAST,
 AND WITHIN THE NATHANIEL BENSON D.L.C. NO 37,
 LOCATED IN THE SW 1/4 SECTION 30, THE NW 1/4 SECTION 31,
 TOWNSHIP 3 NORTH, RANGE 11 EAST,
 OF THE WILLAMETTE MERIDIAN, CITY OF HOOD RIVER,
 HOOD RIVER COUNTY, OREGON
 DECEMBER 13, 2001 FOR O.D.O.T REGION 1 SURVEY GROUP
 123 NW FLANDERS, PORTLAND, OR. 97209-4037
 O.D.O.T. CONTRACT NO. 17708 KEY NO. 10681 SHEET 14 OF 19

CS# 2002 003

THIS SURVEY WAS PREPARED USING A
 HEWLETT-PACKARD DESIGN JET 1050C WITH
 HEWLETT-PACKARD PRODUCT NO C4871A ON
 HEWLETT-PACKARD 51642B POLYESTER FILM.

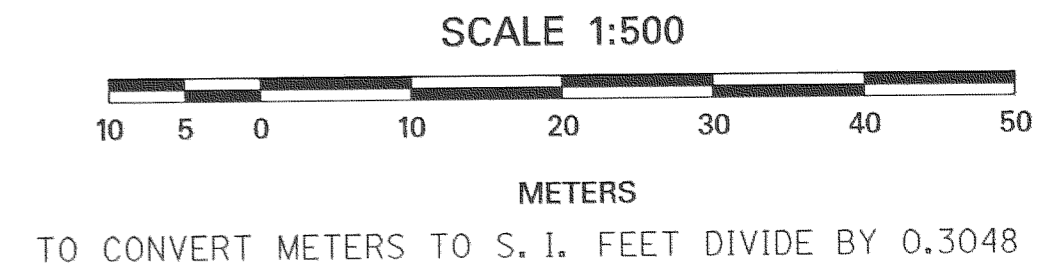


FILED

JAN 9 2002
Robert [Signature]
 COUNTY SURVEYOR

W&H PACIFIC
 8405 SW NIMBUS AVE.
 BEAVERTON, OREGON
 97008-7120
 TEL: (503)626-0455
 FAX: (503)526-0775
 WWW.WHPACIFIC.COM

REGISTERED PROFESSIONAL LAND SURVEYOR
Pat Marquis
 OREGON
 JANUARY 26, 1989
 PAT MARQUIS
 2382
 EXPIRES 12/31/02



LEGEND		
★	SET OR FOUND CONTROL POINT AS NOTED (ON SHEET 2 & 3)	EDGE OF ROADWAY
▲	SET NETWORK/TRVERSE POINT AS NOTED (ON SHEET 2 & 3)	RIGHT-OF-WAY LINE
○	FOUND MONUMENT AS NOTED	TRVERSE LINE
■	CALCULATED COORDINATE POINT VALUE	CENTER LINE
—	DLC LINES	1 POINT NUMBER
—	SECTION LINE	AC ALUMINUM CAP
---	QUARTER SEC. LINE	BD BRASS DISK
---	PROPERTY LINE	RPC RED PLASTIC CAP
		YPC YELLOW PLASTIC CAP
		DOC. NO DOCUMENT NUMBER
		IR IRON ROD
		IP IRON PIPE
		CS COUNTY SURVEY

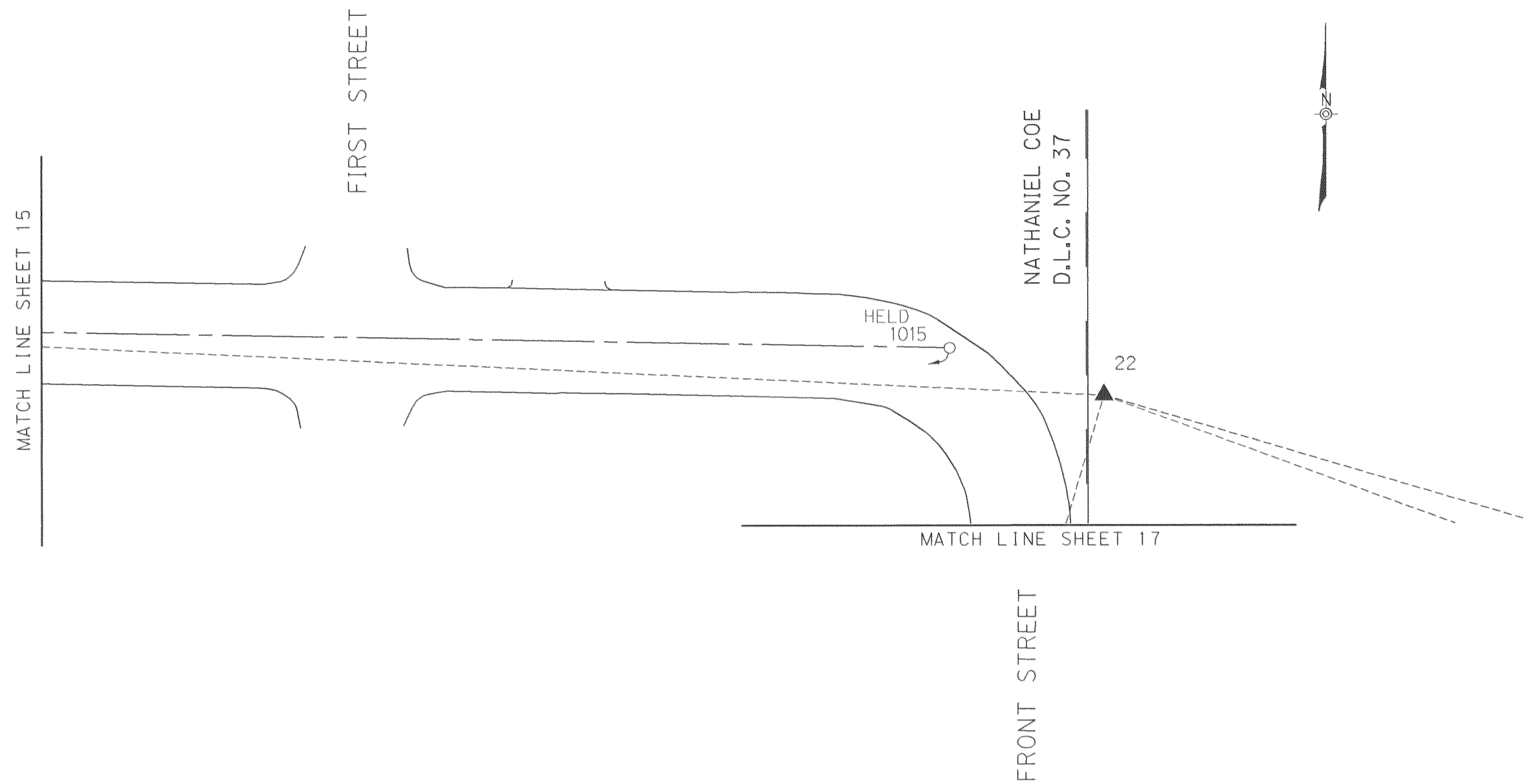
CALCULATED COORDINATE POINT LIST

POINT	NORTHING	EASTING
4016	227439.505	2421174.878

OREGON DEPT. OF TRANSPORTATION
 HORIZONTAL CONTROL NETWORK,
 MONUMENT RECOVERY AND RIGHT-OF-WAY RETRACEMENT SURVEY
 COUNTRY CLUB ROAD TO MT. HOOD HIGHWAY
 HISTORIC COLUMBIA RIVER HIGHWAY
 WITHIN THE NATHANIEL COE D.L.C. NO. 37, THE WILLIAM JENKINS D.L.C. NO 38,
 LOCATED IN THE SW & SE 1/4 SECTION 25, THE SW & SE 1/4 SECTION 26,
 THE SE 1/4 SECTION 27, THE NE 1/4 SECTION 36,
 TOWNSHIP 3 NORTH, RANGE 10 EAST,
 AND WITHIN THE NATHANIEL BENSON D.L.C. NO 37,
 LOCATED IN THE SW 1/4 SECTION 30, THE NW 1/4 SECTION 31,
 TOWNSHIP 3 NORTH, RANGE 11 EAST,
 OF THE WILLAMETTE MERIDIAN, CITY OF HOOD RIVER,
 HOOD RIVER COUNTY, OREGON

DECEMBER 13, 2001 FOR O.D.O.T REGION 1 SURVEY GROUP
 123 NW FLANDERS, PORTLAND, OR. 97209-4037
 O.D.O.T. CONTRACT NO. 17708 KEY NO. 10681 SHEET 15 OF 19

THIS SURVEY WAS PREPARED USING A
 HEWLETT-PACKARD DESIGN JET 1050C WITH
 HEWLETT-PACKARD PRODUCT NO C4871A ON
 HEWLETT-PACKARD 51642B POLYESTER FILM.



FILED

JAN 9 2002
Ronald D. ...
 COUNTY SURVEYOR

W&H PACIFIC
 8405 SW NIMBUS AVE.
 BEAVERTON, OREGON
 97008-7120
 TEL: (503)626-0455
 FAX: (503)526-0775
 WWW.WHPACIFIC.COM

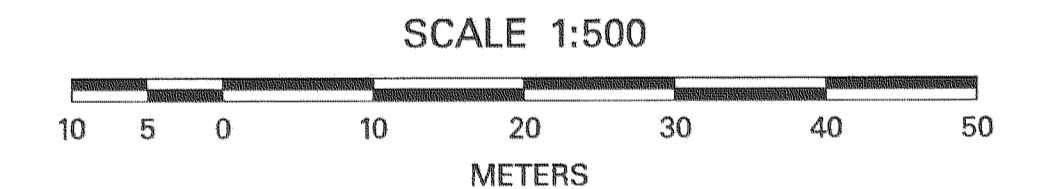
REGISTERED PROFESSIONAL LAND SURVEYOR
Pat Marquis
 OREGON
 JANUARY 20, 1989
 PAT MARQUIS
 2382
 EXPIRES 12/31/02

LEGEND			
★	SET OR FOUND CONTROL POINT AS NOTED (ON SHEET 2 & 3)	—	EDGE OF ROADWAY
▲	SET NETWORK/TRVERSE POINT AS NOTED (ON SHEET 2 & 3)	—	RIGHT-OF-WAY LINE
○	FOUND MONUMENT AS NOTED	----	TRAVERSE LINE
■	CALCULATED COORDINATE POINT VALUE	----	CENTER LINE
—	DLC LINES	1	POINT NUMBER
—	SECTION LINE	AC	ALUMINUM CAP
---	QUARTER SEC. LINE	BD	BRASS DISK
---	PROPERTY LINE	RPC	RED PLASTIC CAP
		YPC	YELLOW PLASTIC CAP
		DOC. NO	DOCUMENT NUMBER
		IR	IRON ROD
		IP	IRON PIPE
		CS	COUNTY SURVEY

RECOVERED MONUMENT LIST

POINT	NORTHING	EASTING	ELEVATION	DESCRIPTION	ORIGIN
1015	227442.529	2421498.219	41.899	FND STONE W/DRILL HOLE IN MON BOX	CITY MON NO. B-3

(STATE PLANE COORDINATES = LOCAL DATUM PLANE X 0.999932918
 WHP JOB NO. 830697 CADD FILE NAME: 10681REC.DGN



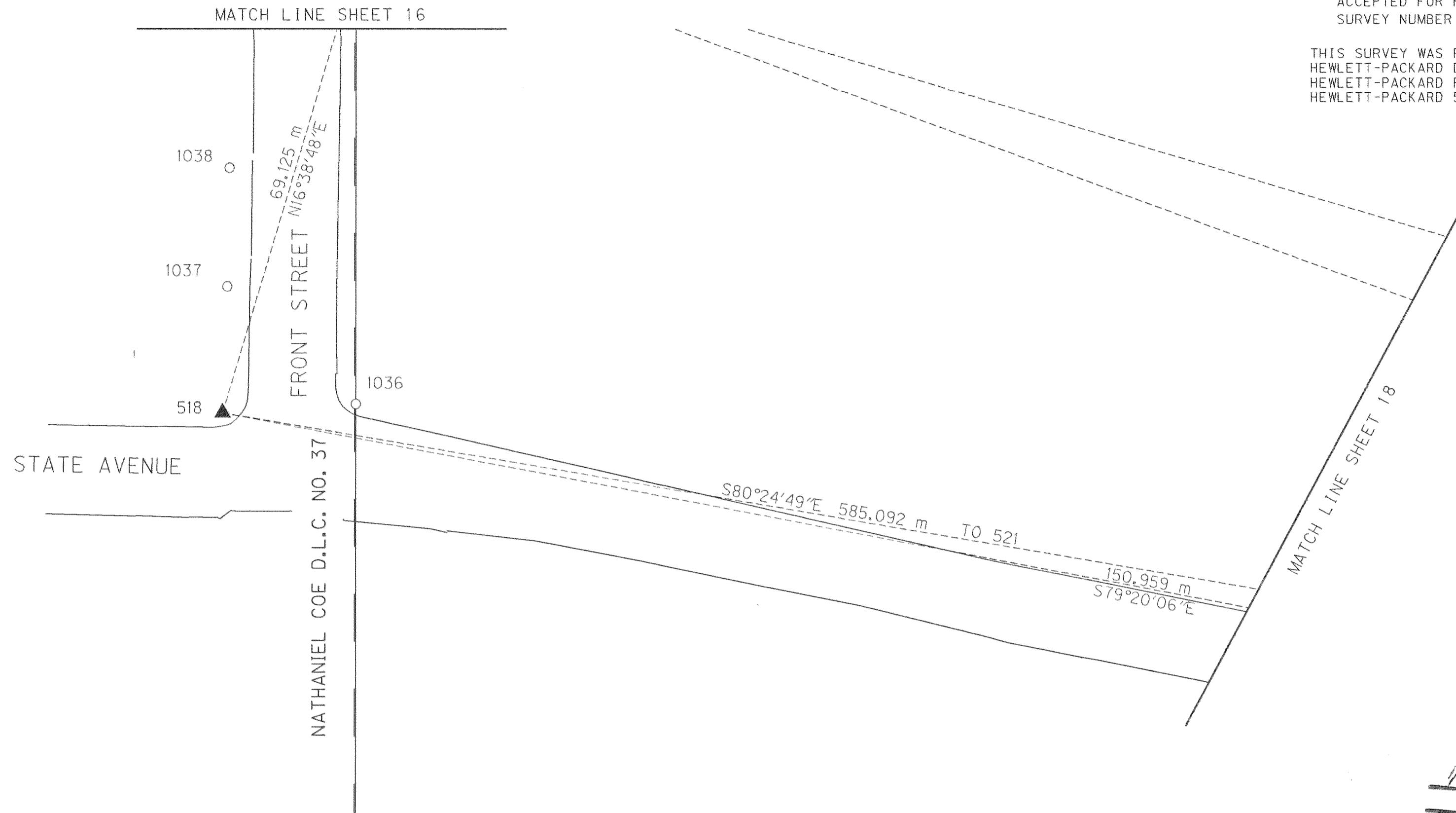
TO CONVERT METERS TO S. I. FEET DIVIDE BY 0.3048

OREGON DEPT. OF TRANSPORTATION
 HORIZONTAL CONTROL NETWORK,
 MONUMENT RECOVERY AND RIGHT-OF-WAY RETRACEMENT SURVEY
 COUNTRY CLUB ROAD TO MT. HOOD HIGHWAY
 HISTORIC COLUMBIA RIVER HIGHWAY
 WITHIN THE NATHANIEL COE D.L.C. NO. 37, THE WILLIAM JENKINS D.L.C. NO 38,
 LOCATED IN THE SW & SE 1/4 SECTION 25, THE SW & SE 1/4 SECTION 26,
 THE SE 1/4 SECTION 27, THE NE 1/4 SECTION 36,
 TOWNSHIP 3 NORTH, RANGE 10 EAST,
 AND WITHIN THE NATHANIEL BENSON D.L.C. NO 37,
 LOCATED IN THE SW 1/4 SECTION 30, THE NW 1/4 SECTION 31,
 TOWNSHIP 3 NORTH, RANGE 11 EAST,
 OF THE WILLAMETTE MERIDIAN, CITY OF HOOD RIVER,
 HOOD RIVER COUNTY, OREGON

DECEMBER 13, 2001 FOR O.D.O.T REGION 1 SURVEY GROUP
 123 NW FLANDERS, PORTLAND, OR. 97209-4037
 O.D.O.T. CONTRACT NO. 17708 KEY NO. 10681 SHEET 16 OF 19

CS# 2002 003

THIS SURVEY WAS PREPARED USING A
 HEWLETT-PACKARD DESIGN JET 1050C WITH
 HEWLETT-PACKARD PRODUCT NO C4871A ON
 HEWLETT-PACKARD 51642B POLYESTER FILM.



FILED

JAN 9 2002
Paul T. Tait
 COUNTY SURVEYOR

W&H PACIFIC
 8405 SW NIMBUS AVE.
 BEAVERTON, OREGON
 97008-7120
 TEL: (503)626-0455
 FAX: (503)526-0775
 WWW.WHPACIFIC.COM

REGISTERED PROFESSIONAL LAND SURVEYOR
Pat Marquis
 OREGON
 JANUARY 20, 1989
 PAT MARQUIS
 2382
 EXPIRES 12/31/02

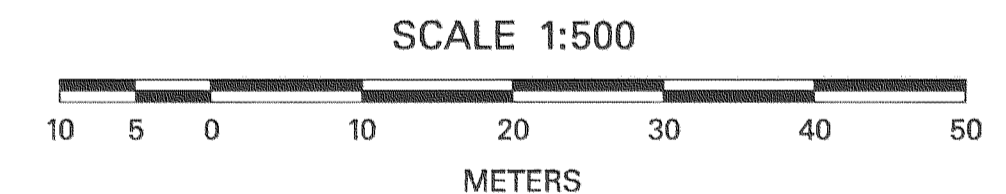
LEGEND			
★	SET OR FOUND CONTROL POINT AS NOTED (ON SHEET 2 & 3)	—	EDGE OF ROADWAY
▲	SET NETWORK/TRVERSE POINT AS NOTED (ON SHEET 2 & 3)	—	RIGHT-OF-WAY LINE
○	FOUND MONUMENT AS NOTED	---	TRAVERSE LINE
■	CALCULATED COORDINATE POINT VALUE	- - - -	CENTER LINE
—	DLC LINES	I	POINT NUMBER
—	SECTION LINE	AC	ALUMINUM CAP
---	QUARTER SEC. LINE	BD	BRASS DISK
—	PROPERTY LINE	RPC	RED PLASTIC CAP
		YPC	YELLOW PLASTIC CAP
		DOC. NO	DOCUMENT NUMBER
		IR	IRON ROD
		IP	IRON PIPE
		CS	COUNTY SURVEY

RECOVERED MONUMENT LIST

POINT	NORTHING	EASTING	ELEVATION	DESCRIPTION	ORIGIN
1036	227371.909	2421514.436	45.580	FND 1-3/8" IRON BAR UP 25 mm	UNKNOWN
1037	227387.665	2421497.138	45.138	FND 1" IRON BAR W/PUNCH FLUSH	UNKNOWN
1038	227403.506	2421497.446	44.326	FND 5/8" IR UP 50 mm	CS 97018

(STATE PLANE COORDINATES = LOCAL DATUM PLANE X 0.999932918

WHP JOB NO. 830697 CADD FILE NAME: 10681REC.DGN



TO CONVERT METERS TO S. I. FEET DIVIDE BY 0.3048

OREGON DEPT. OF TRANSPORTATION
 HORIZONTAL CONTROL NETWORK,
 MONUMENT RECOVERY AND RIGHT-OF-WAY RETRACEMENT SURVEY
 COUNTRY CLUB ROAD TO MT. HOOD HIGHWAY
 HISTORIC COLUMBIA RIVER HIGHWAY
 WITHIN THE NATHANIEL COE D.L.C. NO. 37, THE WILLIAM JENKINS D.L.C. NO 38,
 LOCATED IN THE SW & SE 1/4 SECTION 25, THE SW & SE 1/4 SECTION 26,
 THE SE 1/4 SECTION 27, THE NE 1/4 SECTION 36,
 TOWNSHIP 3 NORTH, RANGE 10 EAST,
 AND WITHIN THE NATHANIEL BENSON D.L.C. NO 37,
 LOCATED IN THE SW 1/4 SECTION 30, THE NW 1/4 SECTION 31,
 TOWNSHIP 3 NORTH, RANGE 11 EAST,
 OF THE WILLAMETTE MERIDIAN, CITY OF HOOD RIVER,
 HOOD RIVER COUNTY, OREGON

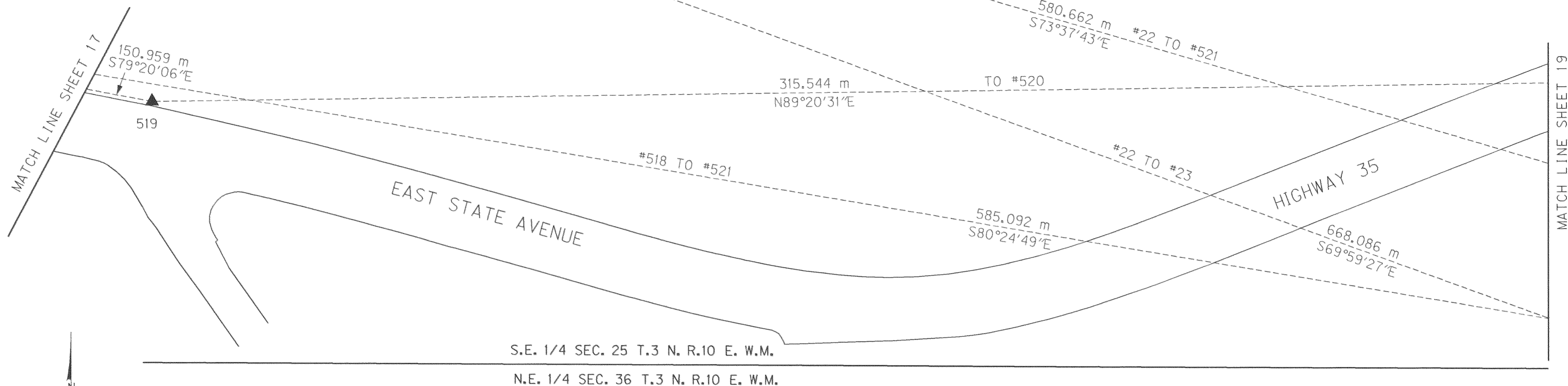
DECEMBER 13, 2001 FOR O.D.O.T REGION 1 SURVEY GROUP
 123 NW FLANDERS, PORTLAND, OR. 97209-4037
 O.D.O.T. CONTRACT NO. 17708 KEY NO. 10681 SHEET 17 OF 19

CS #2002 003

S.E. 1/4 SEC. 25 T.3 N. R.10 E. W.M.

THIS SURVEY WAS PREPARED USING A
HEWLETT-PACKARD DESIGN JET 1050C WITH
HEWLETT-PACKARD PRODUCT NO C4871A ON
HEWLETT-PACKARD 51642B POLYESTER FILM.

HOOD RIVER COUNTY SURVEYOR'S OFFICE
RECEIVED: _____
ACCEPTED FOR FILING: _____
SURVEY NUMBER: _____

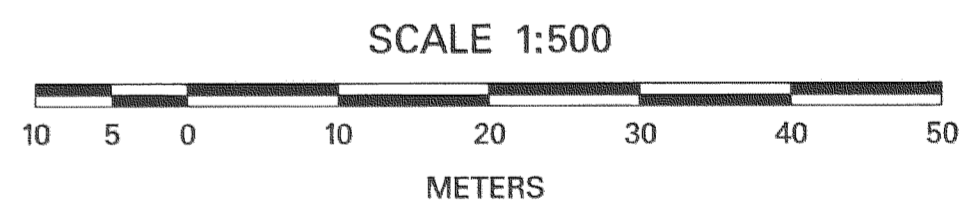


FILED

JAN 9 2002
Royal Tolbert
COUNTY SURVEYOR

W&H PACIFIC
8405 SW NIMBUS AVE.
BEAVERTON, OREGON
97008-7120
TEL: (503)626-0455
FAX: (503)526-0775
WWW.WHPACIFIC.COM

REGISTERED
PROFESSIONAL
LAND SURVEYOR
Pat Marquis
OREGON
JANUARY 20, 1989
PAT MARQUIS
2382
EXPIRES 12/31/02



TO CONVERT METERS TO S. I. FEET DIVIDE BY 0.3048

LEGEND			
★	SET OR FOUND CONTROL POINT AS NOTED (ON SHEET 2 & 3)	———	EDGE OF ROADWAY
▲	SET NETWORK/TRVERSE POINT AS NOTED (ON SHEET 2 & 3)	———	RIGHT-OF-WAY LINE
○	FOUND MONUMENT AS NOTED	-----	TRAVERSE LINE
■	CALCULATED COORDINATE POINT VALUE	- - - -	CENTER LINE
—	DLC LINES	1	POINT NUMBER
—	SECTION LINE	AC	ALUMINUM CAP
—	QUARTER SEC. LINE	BD	BRASS DISK
—	PROPERTY LINE	RPC	RED PLASTIC CAP
		YPC	YELLOW PLASTIC CAP
		DOC. NO	DOCUMENT NUMBER
		IR	IRON ROD
		IP	IRON PIPE
		CS	COUNTY SURVEY

OREGON DEPT. OF TRANSPORTATION
HORIZONTAL CONTROL NETWORK,
MONUMENT RECOVERY AND RIGHT-OF-WAY RETRACEMENT SURVEY
COUNTRY CLUB ROAD TO MT. HOOD HIGHWAY
HISTORIC COLUMBIA RIVER HIGHWAY

WITHIN THE NATHANIEL COE D.L.C. NO. 37, THE WILLIAM JENKINS D.L.C. NO 38,
LOCATED IN THE SW & SE 1/4 SECTION 25, THE SW & SE 1/4 SECTION 26,
THE SE 1/4 SECTION 27, THE NE 1/4 SECTION 36,
TOWNSHIP 3 NORTH, RANGE 10 EAST,
AND WITHIN THE NATHANIEL BENSON D.L.C. NO 37,
LOCATED IN THE SW 1/4 SECTION 30, THE NW 1/4 SECTION 31,
TOWNSHIP 3 NORTH, RANGE 11 EAST,
OF THE WILLAMETTE MERIDIAN, CITY OF HOOD RIVER,
HOOD RIVER COUNTY, OREGON

DECEMBER 13, 2001 FOR O.D.O.T REGION 1 SURVEY GROUP
123 NW FLANDERS, PORTLAND, OR. 97209-4037
O.D.O.T. CONTRACT NO. 17708 KEY NO. 10681 SHEET 18 OF 19

(STATE PLANE COORDINATES = LOCAL DATUM PLANE X 0.999932918
WHP JOB NO. 830697 CADD FILE NAME: 10681REC.DGN

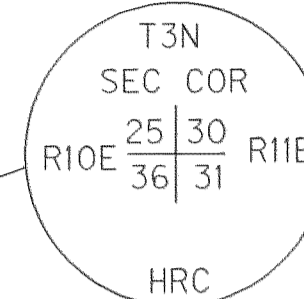
CS # 2002 003

S.E. 1/4 SEC. 25 T.3 N. R.10 E. W.M.
 N.E. 1/4 SEC. 36 T.3 N. R.10 E. W.M.
 N.W. 1/4 SEC. 31 T.3 N. R.11 E. W.M.
 S.W. 1/4 SEC. 30 T.3 N. R.11 E. W.M.

HOOD RIVER COUNTY SURVEYOR'S OFFICE
 RECEIVED: _____
 ACCEPTED FOR FILING: _____
 SURVEY NUMBER: _____

THIS SURVEY WAS PREPARED USING A
 HEWLETT-PACKARD DESIGN JET 1050C WITH
 HEWLETT-PACKARD PRODUCT NO C4871A ON
 HEWLETT-PACKARD 51642B POLYESTER FILM.

EXTERIOR CORNER
 NATHANIEL BENSON
 D.L.C. NO. 37



HISTORIC COLUMBIA RIVER HWY

REGISTERED
 PROFESSIONAL
 LAND SURVEYOR
Pat Marquis
 OREGON
 JANUARY 20, 1989
 PAT MARQUIS
 2382
 EXPIRES 12/31/02

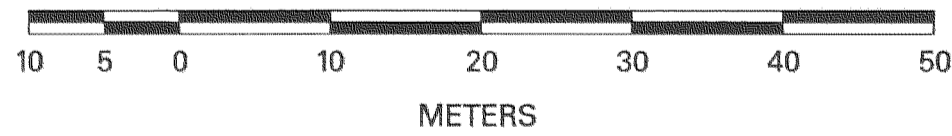
FILED

JAN 9 2002
Pat Marquis
 COUNTY SURVEYOR

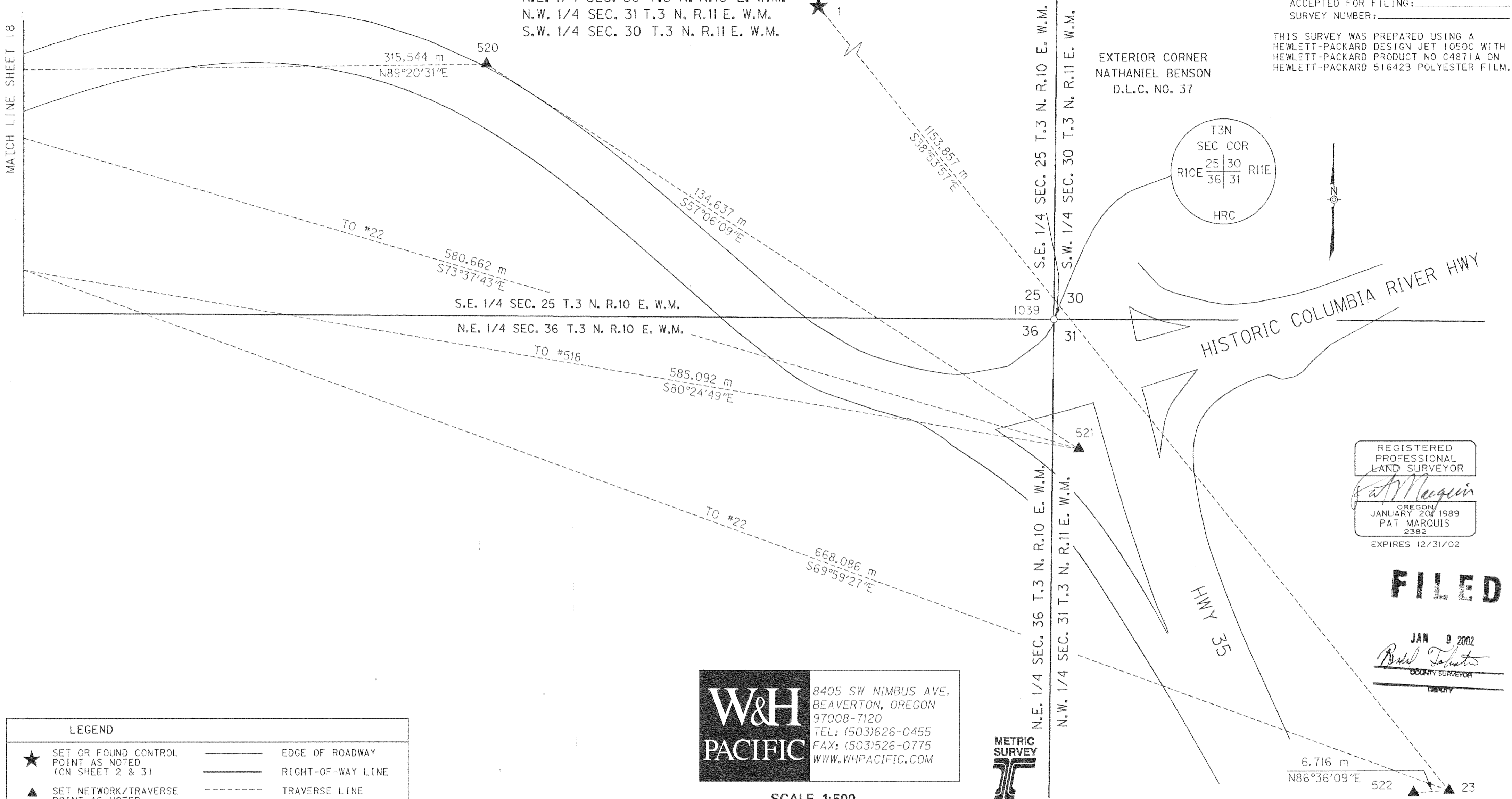
**W&H
 PACIFIC**
 8405 SW NIMBUS AVE.
 BEAVERTON, OREGON
 97008-7120
 TEL: (503)626-0455
 FAX: (503)526-0775
 WWW.WHPACIFIC.COM



SCALE 1:500



MATCH LINE SHEET 18



LEGEND			
★	SET OR FOUND CONTROL POINT AS NOTED (ON SHEET 2 & 3)	—	EDGE OF ROADWAY
▲	SET NETWORK/TRVERSE POINT AS NOTED (ON SHEET 2 & 3)	— — — —	RIGHT-OF-WAY LINE
○	FOUND MONUMENT AS NOTED	— — — —	TRAVERSE LINE
■	CALCULATED COORDINATE POINT VALUE	— — — —	CENTER LINE
—	DLC LINES	1	POINT NUMBER
—	SECTION LINE	AC	ALUMINUM CAP
—	QUARTER SEC. LINE	BD	BRASS DISK
—	PROPERTY LINE	RPC	RED PLASTIC CAP
		YPC	YELLOW PLASTIC CAP
		DOC. NO	DOCUMENT NUMBER
		IR	IRON ROD
		IP	IRON PIPE
		CS	COUNTY SURVEY

RECOVERED MONUMENT LIST					
POINT	NORTHING	EASTING	ELEVATION	DESCRIPTION	ORIGIN
1039	227297.904	2422068.708	45.361	FND COUNTY BRASS CAP DOWN 50 mm IN ASPHALT MARKED AS DEPICTED HEREON	COUNTY SURVEYOR

(STATE PLANE COORDINATES = LOCAL DATUM PLANE X 0.999932918

WHP JOB NO. 830697 CADD FILE NAME: 10681REC.DGN

OREGON DEPT. OF TRANSPORTATION
 HORIZONTAL CONTROL NETWORK,
 MONUMENT RECOVERY AND RIGHT-OF-WAY RETRACEMENT SURVEY
 COUNTRY CLUB ROAD TO MT. HOOD HIGHWAY
 HISTORIC COLUMBIA RIVER HIGHWAY
 WITHIN THE NATHANIEL COE D.L.C. NO. 37, THE WILLIAM JENKINS D.L.C. NO 38,
 LOCATED IN THE SW & SE 1/4 SECTION 25, THE SW & SE 1/4 SECTION 26,
 THE SE 1/4 SECTION 27, THE NE 1/4 SECTION 36,
 TOWNSHIP 3 NORTH, RANGE 10 EAST,
 AND WITHIN THE NATHANIEL BENSON D.L.C. NO 37,
 LOCATED IN THE SW 1/4 SECTION 30, THE NW 1/4 SECTION 31,
 TOWNSHIP 3 NORTH, RANGE 11 EAST,
 OF THE WILLAMETTE MERIDIAN, CITY OF HOOD RIVER,
 HOOD RIVER COUNTY, OREGON
 DECEMBER 13, 2001 FOR O.D.O.T REGION 1 SURVEY GROUP
 123 NW FLANDERS, PORTLAND, OR. 97209-4037
 O.D.O.T. CONTRACT NO. 17708 KEY NO. 10681 SHEET 19 OF 19

CS# 2002 003