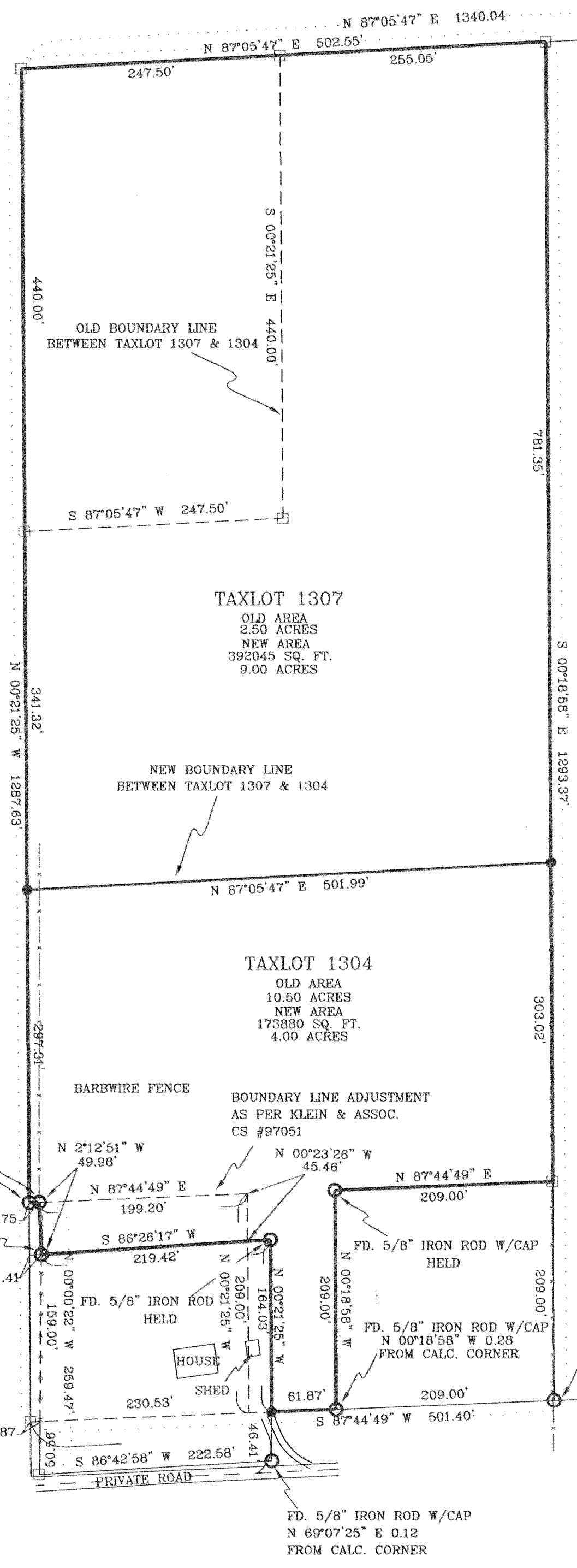
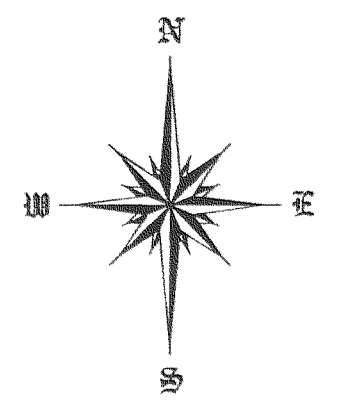


BOUNDARY LINE ADJUSTMENT IN  
NE 1/4, SW 1/4, SEC. 11, T 1 N, R 10 E, WM  
HOOD RIVER COUNTY, STATE OF OREGON

C 1/4 AS PER CS #83044



REFERENCE SURVEYS

SURVEY BY BISHOP SURVEYING MAY 1980  
CS #80054  
SURVEY BY DLC SURVEYING APRIL 1985  
SURVEY BY KLEIN & ASSOC.  
CS #97051  
SURVEY BY SPINNAKER LAND SURVEYING  
CS #2000 030

LEGEND

- = SET 5/8" IR WITH PLASTIC CAP MARKED OR #932 & WA #22098 EXCEPT AS NOTED
- = FOUND MONUMENT AS NOTED
- = CALCULATED CORNER AS NOTED
- ⊠ = CALCULATED 1/4 COR AS NOTED
- ⊞ = CALCULATED SEC COR AS NOTED
- ◀ = FOUND 1/4 COR AS NOTED
- ✦ = FOUND SEC COR AS NOTED

NARRATIVE OF SURVEY

THE PURPOSE OF THIS SURVEY IS TO ADJUST THE BOUNDARY OF TAXLOT 1304 AND TAXLOT 1307 AS SHOWN HEREIN. NO MAJOR DISCREPANCIES WERE FOUND NO ADJUSTMENTS MADE. ALL MONUMENTS FOUND AND ESTABLISHED ALONG WITH THE MEASURED BEARINGS AND DISTANCE ARE SHOWN HEREIN.

BASIS OF BEARING

SURVEY BY SPINNAKER LAND SURVEYING  
CS #2000 030

**FILED**

NOV 8 2001  
*Robert Filato*  
COUNTY CLERK  
DEPUTY

REGISTERED  
PROFESSIONAL  
LAND SURVEYOR

OREGON  
JULY 17, 1970  
ANTHONY C. KLEIN  
932  
Expires 6-30-03



**Klein & Assoc.**

LAND SURVEYING  
1203 12th Street Suite H  
Hood River, Oregon 97031  
Tele: (541)386-3322  
DATE SURVEYED: OCTOBER, 2001  
JOB NO: 01068

1N 10 11, TL 1304, 1307

BOUNDARY LINE ADJUSTMENT  
FOR  
LISA VIEIRA & STEVEN MILLER

Rev 11-1-01

CS 2001 086