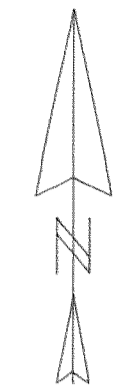


NORTHWEST CORNER
SECTION 22
FOUND PIPE WITH BRASS CAP

S 89° 58' 32" W 2677.94'
1338.97'

NORTH QUARTER CORNER
SECTION 22
FOUND BRASS DISC
IN MONUMENT CASE

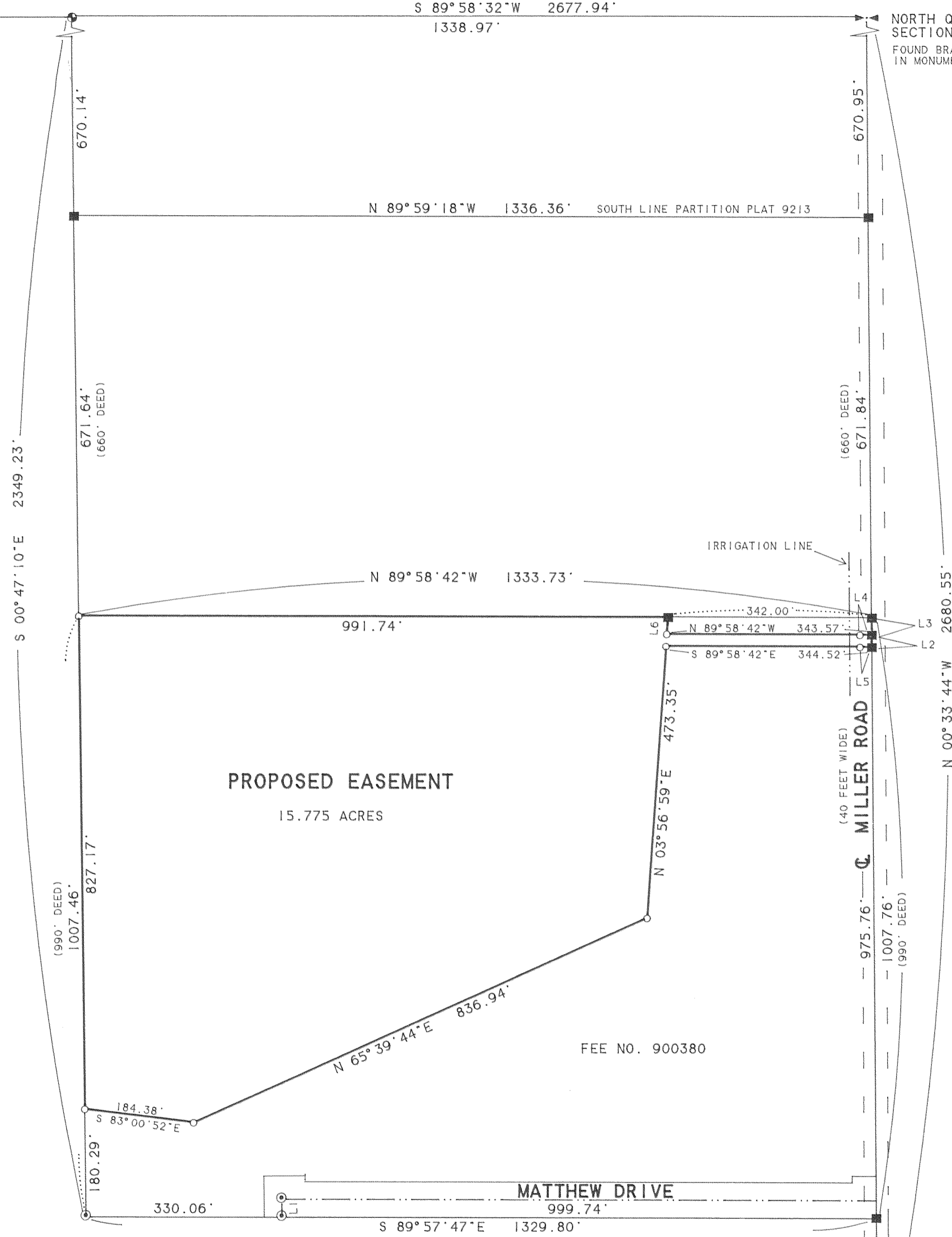


SCALE 1" = 150 FEET
BASIS OF BEARING: CS# 7641

LEGEND:

- SET 1/2" IRON ROD WITH YELLOW PLASTIC CAP
STAMPED "WYEAST PLS 2393"
- ⊙ FOUND 3/4" IRON PIPE AS PER PARTITION PLAT 9011
- CALCULATED POSITION

LINE	BEARING	DISTANCE
L 1	N 00° 49' 25" W	30.00'
L 2	N 00° 33' 44" W	12.00'
L 3	N 00° 33' 44" W	20.00'
L 4	N 89° 58' 42" W	20.00'
L 5	S 89° 58' 42" E	20.00'
L 6	N 03° 56' 59" E	20.05'



PROPOSED EASEMENT
15.775 ACRES

FEE NO. 900380

MATTHEW DRIVE

C. MILLER ROAD
(40 FEET WIDE)

REGISTERED
PROFESSIONAL
LAND SURVEYOR

Kevin Dowd

OREGON
JULY 26, 1989
KEVIN DOWD
2393

RENEW DATE: 12-31-01
SEPTEMBER 12, 2001

RECORD OF SURVEY

SITUATED IN THE NORTHWEST QUARTER
OF SECTION 22
T1 NORTH, R10 EAST, W.M.
HOOD RIVER COUNTY, OREGON

FILED

FOR: MT HOOD MEADOWS
WILLIAM J. FROST

OCT 29 2001

Ronald Latta
COUNTY SURVEYOR
DEPUTY

WYEAST SURVEYS
KEVIN DOWD
4399 WOODWORTH DR
MT HOOD, OR 97041
(541) 352-6065

NARRATIVE:

THE PURPOSE OF THIS SURVEY IS TO MONUMENT THE LINES OF A PROPOSED WETLANDS EASEMENT. THE EAST AND WEST LINES OF FEE NO. 900380 WERE ESTABLISHED ALONG THE SECTION SUBDIVISION LINES AS SHOWN. THE SOUTH LINE WAS ESTABLISHED AS PER PARTITION PLAT 9011. THE NORTH LINE WAS ESTABLISHED AT PROPORTIONED DISTANCE BETWEEN THE SOUTH LINE AND THE SOUTH LINE OF PARTITION PLAT 9213. THE EASEMENT LINES WERE ESTABLISHED AS PER CLIENT INSTRUCTION.

22 CENTER QUARTER CORNER
SECTION 22
FOUND BRASS DISC
IN MONUMENT CASE

Revised 10-22-01 1145

IN 10 22B TAX LOT 401
CS 2001 079