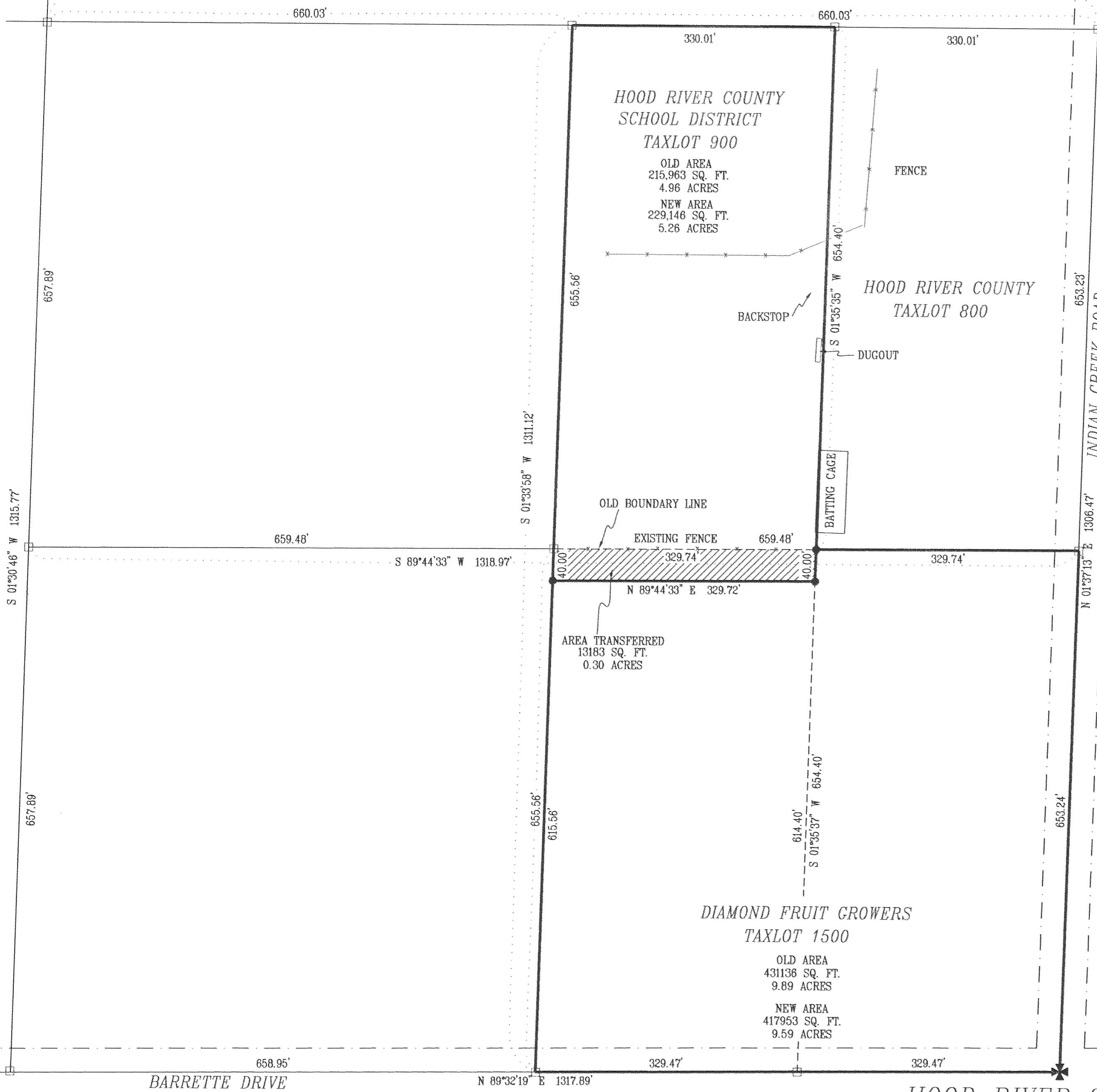


SURVEY IN
SE 1/4, SECTION 3, T 2 N, R 10 E, WM
HOOD RIVER COUNTY, STATE OF OREGON



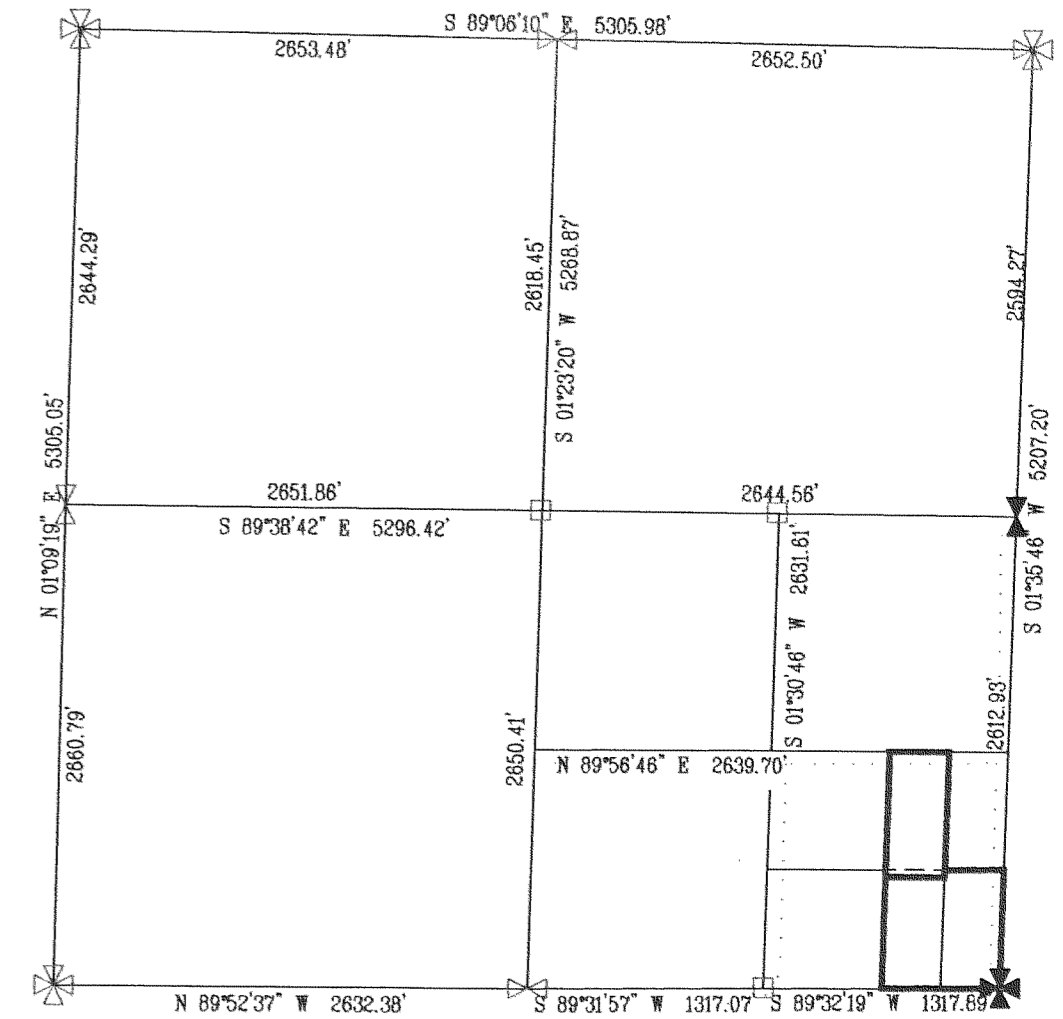
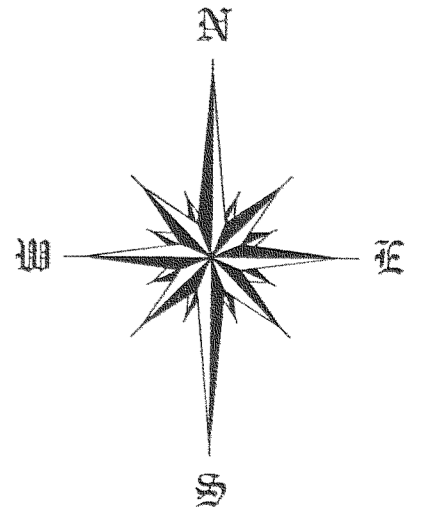
S 89°56'46" W 1320.05'



FILED

SEP 25 2001

Ronald Tolanta
COUNTY SURVEYOR
DEPUTY



REFERENCE SURVEYS

SURVEY BY D.A.I
CS #7338
HOOD RIVER COUNTY SURVEY
COORDINATES SECTION 3

NARRATIVE OF SURVEY

THE PURPOSE OF THIS SURVEY WAS TO ADJUST THE BOUNDARY BETWEEN TAXLOT 900 AND 1500. THE SOUTHEAST SECTION CORNER OF SECTION 3 AND THE EAST QUARTER CORNER WERE LOCATED. THE BASIS OF BEARING IS THE HOOD RIVER COUNTY COORDINATES OF SECTION 3. NO DISCREPANCIES WERE FOUND.

BASIS OF BEARING

HOOD RIVER COUNTY SURVEY
COORDINATES SECTION 3

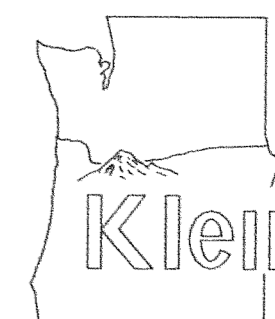
LEGEND

- = SET 5/8" IR WITH PLASTIC CAP MARKED OR #932 & WA #22098 EXCEPT AS NOTED
- = FOUND MONUMENT AS NOTED
- = CALCULATED CORNER AS NOTED
- ⊗ = CALCULATED 1/4 COR AS NOTED
- ⊕ = CALCULATED SEC COR AS NOTED
- ⊖ = FOUND 1/4 COR AS NOTED
- ⊗ = FOUND SEC COR AS NOTED

REGISTERED
PROFESSIONAL
LAND SURVEYOR

OREGON
JULY 17, 1970
ANTHONY C. KLEIN
932

Expires 6-30-03



Klein & Assoc.

LAND SURVEYING
1203 12th Street Suite H
Hood River, Oregon 97031
Tel: (541)386-3322
DATE SURVEYED: JULY 2001
JOB NO: 01027

SURVEY
FOR

HOOD RIVER COUNTY SCHOOL DISTRICT

2N 10E 3D #900 & 1500