

SEP 11 2 01 PM '01

File Number 200123 P 11th
Instrument received on the 11th day of
September, 2001 at 2:01 P.M.

Ken K. Chandler
Hood River County Director of Records
and assessments.

SURVEYOR'S CERTIFICATE

I, Roy O. Gaylord,
being first duly sworn, depose and say that I have
correctly surveyed and marked with proper
monuments the lands represented on this Partition
Plat, the boundaries being described in Instrument
Partition 9613, dated 5/07/1996
Hood River County Deed Records to

KEN CHANDLER

REGISTERED
PROFESSIONAL
LAND SURVEYOR

Roy O. Gaylord
OREGON
JULY 13, 1979
ROY O. GAYLORD
1815

Expires: June, 2003

ACKNOWLEDGMENTS

We the owner(s) of the land shown herein, hereby
declare that this division of land has been made with
our free consent and in accordance with our desires.

L. Chalm 6-15-01
OWNER DATE

Deborah K. Chandler 6-15-01
OWNER DATE

OWNER _____ DATE _____
STATE OF Oregon
COUNTY OF Hood River s.s.
Subscribed and sworn to before me on this
_____ day of June, 2001
by *Jamie K. Blair*

OFFICIAL SEAL
JAMIE S. GAYLORD
NOTARY PUBLIC-OREGON
COMMISSION NO. 305399
MY COMMISSION EXPIRES DEC. 12, 2001

APPROVALS

I hereby certify that all taxes and assessments due
hereon have been fully paid as required by law.

[Signature]
Hood River County Director of Budget and
Finance

I hereby certify this partition was ex-
amined and approved as of this 14TH day
of AUGUST, 2001.

Randal Talbot
Hood River County Surveyor

I hereby certify this partition was ex-
amined and approved as of this 11TH day
of SEPTEMBER, 2001.

Planning File Number #01-054
M. Benedic
Hood River Planning Director

FOUND
D.L.C. #39
BRASS CAP.

NARRATIVE:

THE PURPOSE OF THIS SURVEY IS TO PARTITION PARCEL 2
OF HOOD RIVER COUNTY PARTITION PLAT #9613 INTO 3
NEW LOTS AS SHOWN.
NO MAJOR DISCREPANCIES WERE FOUND.
SEE THE FACE OF THE PLAT FOR FURTHER DETAILS.

NOTE:

HOOD RIVER COUNTY DEED RECORDS, MICROFILM #961056
CONTAINS A WAIVER OF REMONSTRANCE/ APPOINTMENT OF
ATTORNEY IN FACT, BETWEEN THE OWNERS AND THE CITY
OF HOOD RIVER WITH REGARD TO UTILITY IMPROVEMENTS
AND MODIFICATIONS.

THIS PARTITION WAS COMPLETED USING THE BOUNDARY LINES
OF PARCEL 2 OF PARTITION PLAT #9613. THE BOUNDARY
LINES WITH THEIR FOUND CORNERS WERE USED AS SHOWN.
TERRA SURVEYING PLATTED THE PARTITION USING THE
BOUNDARY AS THE EXTERIOR OF THE PARTITION AND DID NOT
ATTEMPT TO RESOLVE THE APPROXIMATELY 27' DIFFERENCE
BETWEEN THE EXISTING FENCE LINE AND THE THOMPSON
PARCEL DEED DISTANCES AS CALLED FROM THE NORTHWEST
CORNER OF THE FOUND BENSON DLC CORNER (PARTITION PLAT
9306 SURVEY NOTES).
NO EXISTING EASEMENTS ARE SHOWN CROSSING PARCEL 1 OF
PARTITION 9306.

LOCATION OF SURVEY:

PARCEL 2 OF HOOD RIVER COUNTY PARTITION PLAT #9613,
LOCATED IN THE SOUTHEAST QUARTER OF SECTION 35,
TOWNSHIP 3 NORTH, RANGE 10 EAST, W.M., HOOD RIVER
COUNTY OREGON.

BASIS OF BEARING:

1986 CITY OF HOOD RIVER DATUM.

REFERENCES:

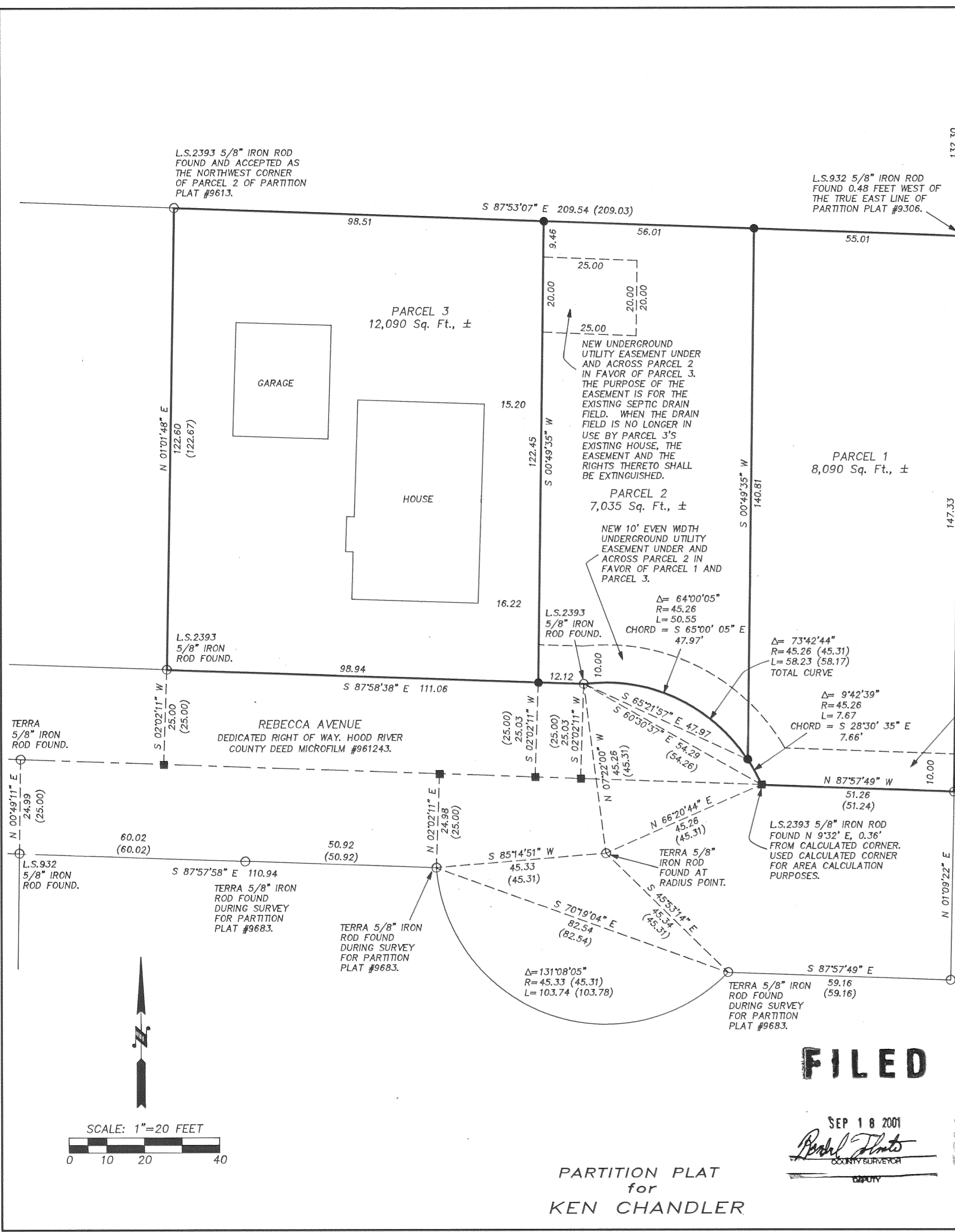
- HOOD RIVER COUNTY PARTITION PLAT #9306.
- HOOD RIVER COUNTY PARTITION PLAT #9333.
- HOOD RIVER COUNTY PARTITION PLAT #9520.
- HOOD RIVER COUNTY PARTITION PLAT #9613.
- HOOD RIVER COUNTY PARTITION PLAT #9633.
- HOOD RIVER COUNTY SURVEYORS OFFICE C.S.#200054.

NEW 10' EVEN WIDTH
UNDERGROUND UTILITY
EASEMENT UNDER AND
ACROSS PARCEL 1 IN
FAVOR OF PARCEL 2 AND
PARCEL 3.

1 1/2" IRON PIPE FOUND AND
ACCEPTED AS THE SOUTHEAST
CORNER OF PARTITION PLAT
#9306.
L.S.2393 DID NOT ACCEPT THIS
MONUMENT AS THE CORNER.

LEGEND:

- SET 5/8" X 30" IRON ROD WITH PLASTIC CAP
- FOUND MONUMENT OF RECORD
- CALCULATED, NOT FOUND OR SET
- () DEED OR PLAT CALL



FILED

SEP 11 2001

Certified to be a true and
correct copy of the ORIGINAL
Dept of Records & Assessment
Ken K. Chandler Deputy

SEP 18 2001
Randal Talbot
COUNTY SURVEYOR
DEPUTY

PARTITION PLAT
for
KEN CHANDLER

TERRA SURVEYING

DATE: JUNE, 2001
SCALE: 1" = 20'
PROJECT: 201036PART
TAX MAP: 3N-10E-35DB TAX LOT 903
P.O. BOX 617
HOOD RIVER, OREGON 97031
PHONE & FAX: (541) 386-4531
E-Mail terra@gorge.net

REV 9/10/01 1400

CS 2001 069