

PARTITION PLAT IN  
 PARCEL 1 PARTITION PLAT 200022P  
 S 1/2, SE 1/4, SEC 32, T 1 N, R 10 E, WM  
 COUNTY OF HOOD RIVER, STATE OF OREGON  
 TAX LOT 1N10 3200 2800

FILED  
 RECORDS AND ASSESSMENT  
 HOOD RIVER CO.  
 AUG 7 11 39 AM '01

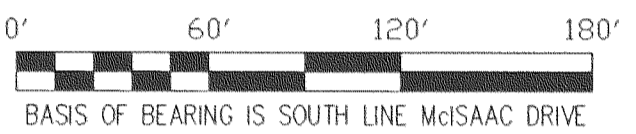
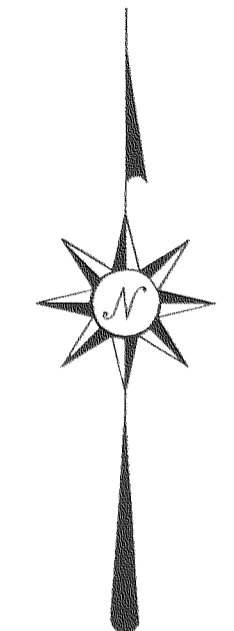
PARTITION PLAT NO. 200121P  
 Instrument received on the 7<sup>th</sup> day of August, 2001 at 11:39 AM  
*Lee K. Shunk*  
 Hood River County Director of Records and Assessments

SURVEYS CERTIFICATE  
 I, Anthony C. Klein, being first duly sworn, depose and say that I have correctly surveyed and marked with proper monuments the lands represented on this Partition Plat, the boundaries being Parcel 1 of Partition Plat No. 200022p dated JULY, 1, 2000, Hood River County Records.  
*Anthony C. Klein*  
 ANTHONY C. KLEIN PLS 932

ACKNOWLEDGEMENTS  
 We the owners of the land shown herein, hereby declare that this division of land has been made with our free consent and in accordance with our desires.  
*Walter Hoffman* 8-30  
 L. H. BUILDING CO. Date  
 WALTER HOFFMAN PRESIDENT

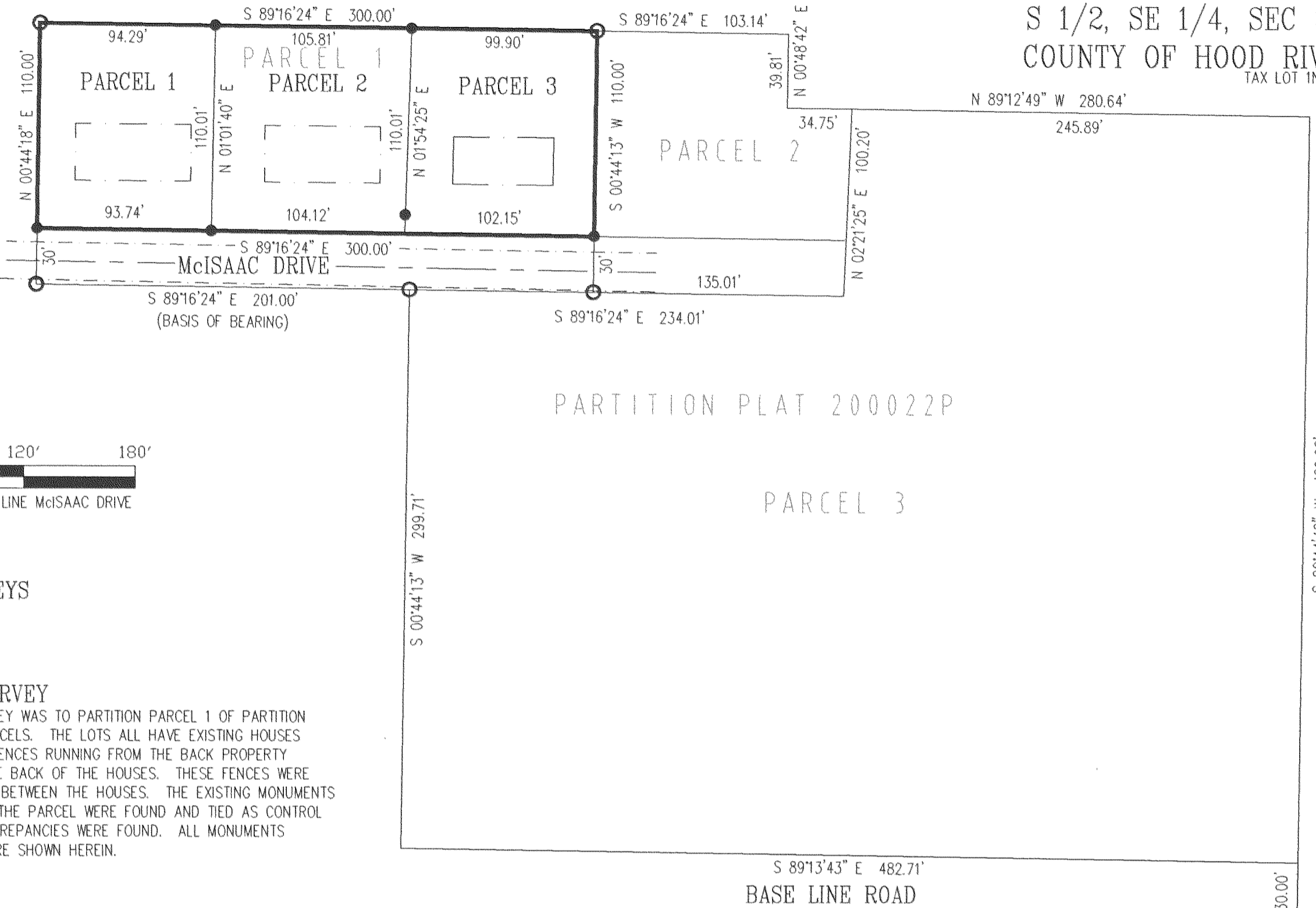
STATE OF OREGON }  
 COUNTY OF MULTNOMAH } ss  
 Subscribed and sworn to before me on this 3 day of August, 2001  
 by *Deborah S. Keller*  
 Notary Public for the State of Oregon  
 My commission expires 1-9-05  
 AUG 07 2001  
 OFFICIAL SEAL  
 DEBORAH S. KELLER  
 NOTARY PUBLIC-OREGON  
 COMMISSION NO. 339993  
 MY COMMISSION EXPIRES JAN. 9, 2005

APPROVALS  
 I hereby certify that all taxes and assessment due hereon have been fully paid as required by law.  
*Deborah S. Keller*  
 Hood River County Director of Budget and Finance.  
 I hereby certify this partition was examined and approved as of this 7<sup>th</sup> day of August, 2001  
*Randal Shuts*  
 Hood River County Surveyor  
 I hereby certify this partition was examined and approved as of this 7<sup>th</sup> day of August, 2001  
*M. Bonstedt*  
 Hood River County Planning Director



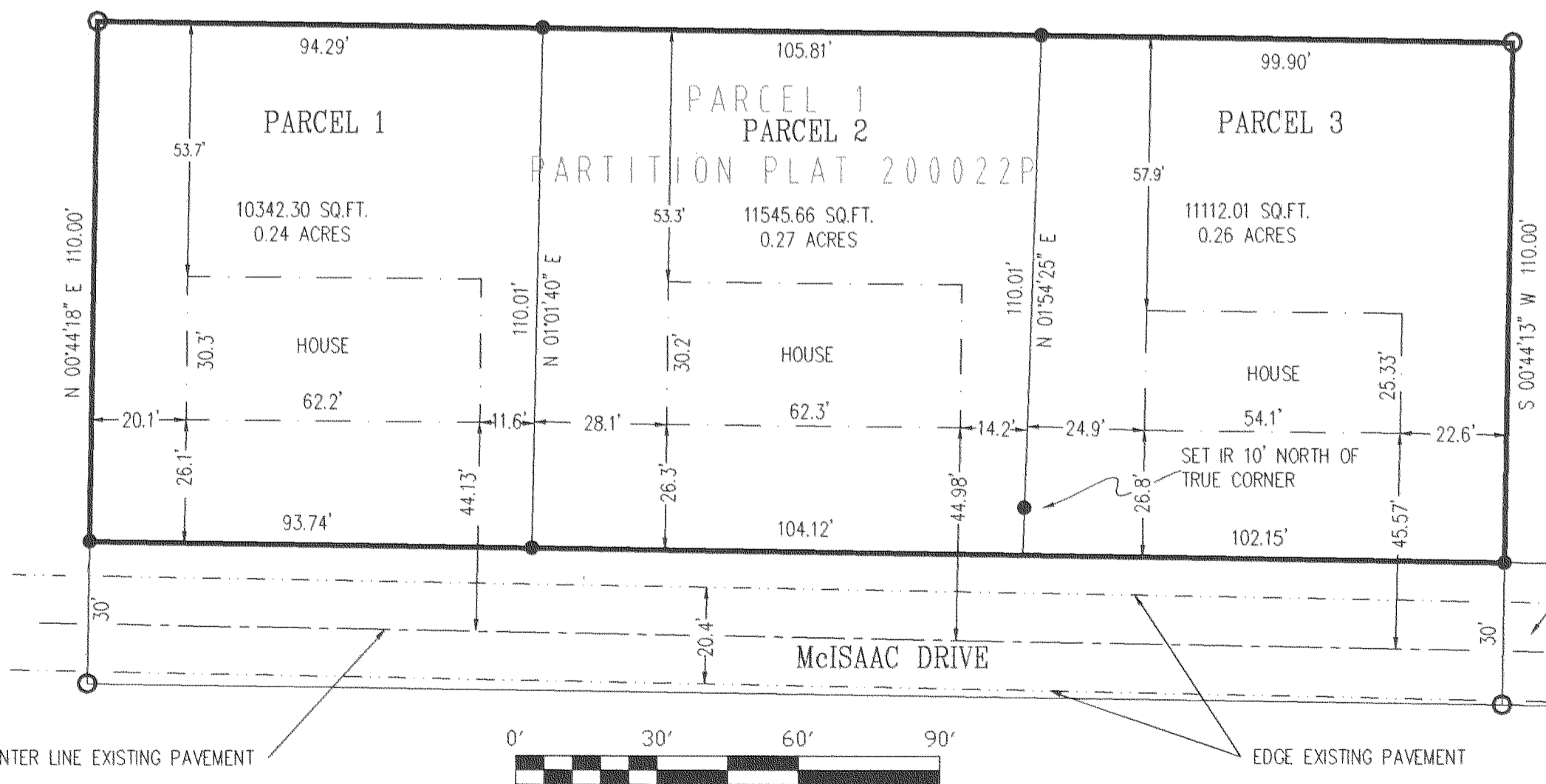
REFERENCE SURVEYS  
 PARTITION PLAT #200022P  
 FILED JULY 21, 2000

NARRATIVE OF SURVEY  
 THE PURPOSE OF THE SURVEY WAS TO PARTITION PARCEL 1 OF PARTITION PLAT #200022P INTO 3 PARCELS. THE LOTS ALL HAVE EXISTING HOUSES ON THEM WITH SIDE YARD FENCES RUNNING FROM THE BACK PROPERTY LINE TO APPROXIMATELY THE BACK OF THE HOUSES. THESE FENCES WERE USED AS THE DIVIDING LINE BETWEEN THE HOUSES. THE EXISTING MONUMENTS AT THE FOUR CORNERS OF THE PARCEL WERE FOUND AND TIED AS CONTROL FOR THIS SURVEY. NO DISCREPANCIES WERE FOUND. ALL MONUMENTS FOUND AND ESTABLISHED ARE SHOWN HEREIN.



- LEGEND
- = SET 5/8" IR WITH PLASTIC CAP MARKED OR #932 & WA #22098 EXCEPT AS NOTED
  - = FOUND MONUMENT AS NOTED
  - = CALCULATED CORNER AS NOTED
  - ⊗ = CALCULATED 1/4 COR AS NOTED
  - ⊗ = CALCULATED SEC COR AS NOTED
  - ⊗ = FOUND 1/4 COR AS NOTED
  - ⊗ = FOUND SEC COR AS NOTED

DETAIL



PARTITION FOR  
 L. H. BUILDING CO.

REGISTERED PROFESSIONAL LAND SURVEYOR

OREGON  
 JULY 17, 1970  
 ANTHONY C. KLEIN  
 932  
 EXPIRES 6-30-03

FILED  
 Klein & Assoc.

AUG 8 2001  
*Randal Shuts*  
 COUNTY SURVEYOR

LAND SURVEYING  
 1203 12TH STREET, SUITE H  
 HOOD RIVER, OREGON 97031  
 TELE: (541)386-3322  
 DATE SURVEYED: JULY 2001  
 JOB NO: 01048

Rec'd 8-7-01 1402

CS 2001 062