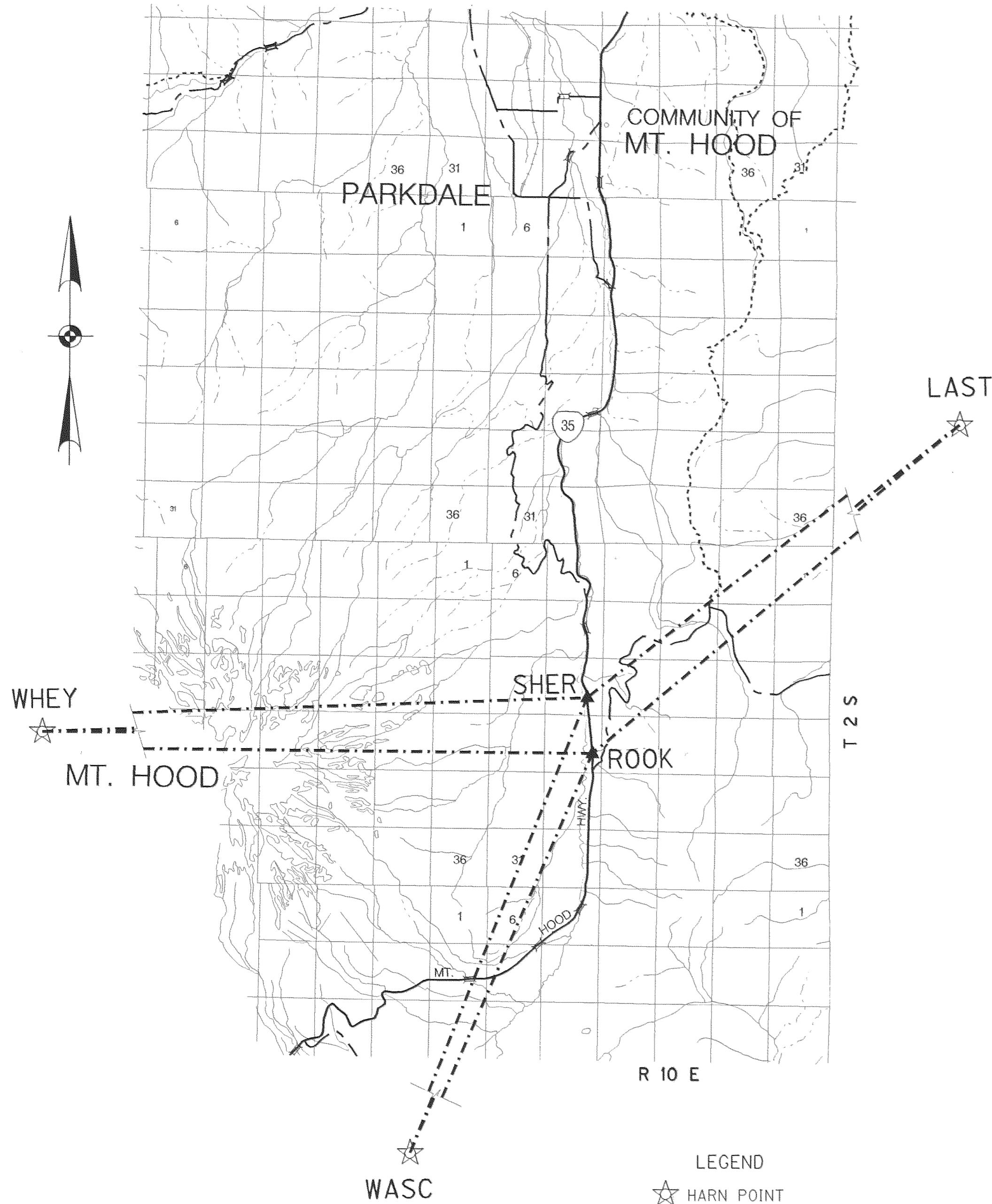
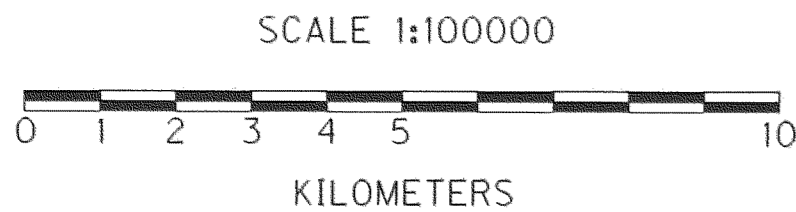


PROJECT AREA



- LEGEND
- ☆ HARN POINT
 - ▲ HORIZONTAL CONTROL POINT SET
 - - - TIE TO HARN STATION



TO CONVERT METERS TO FEET DIVIDE BY 0.3048

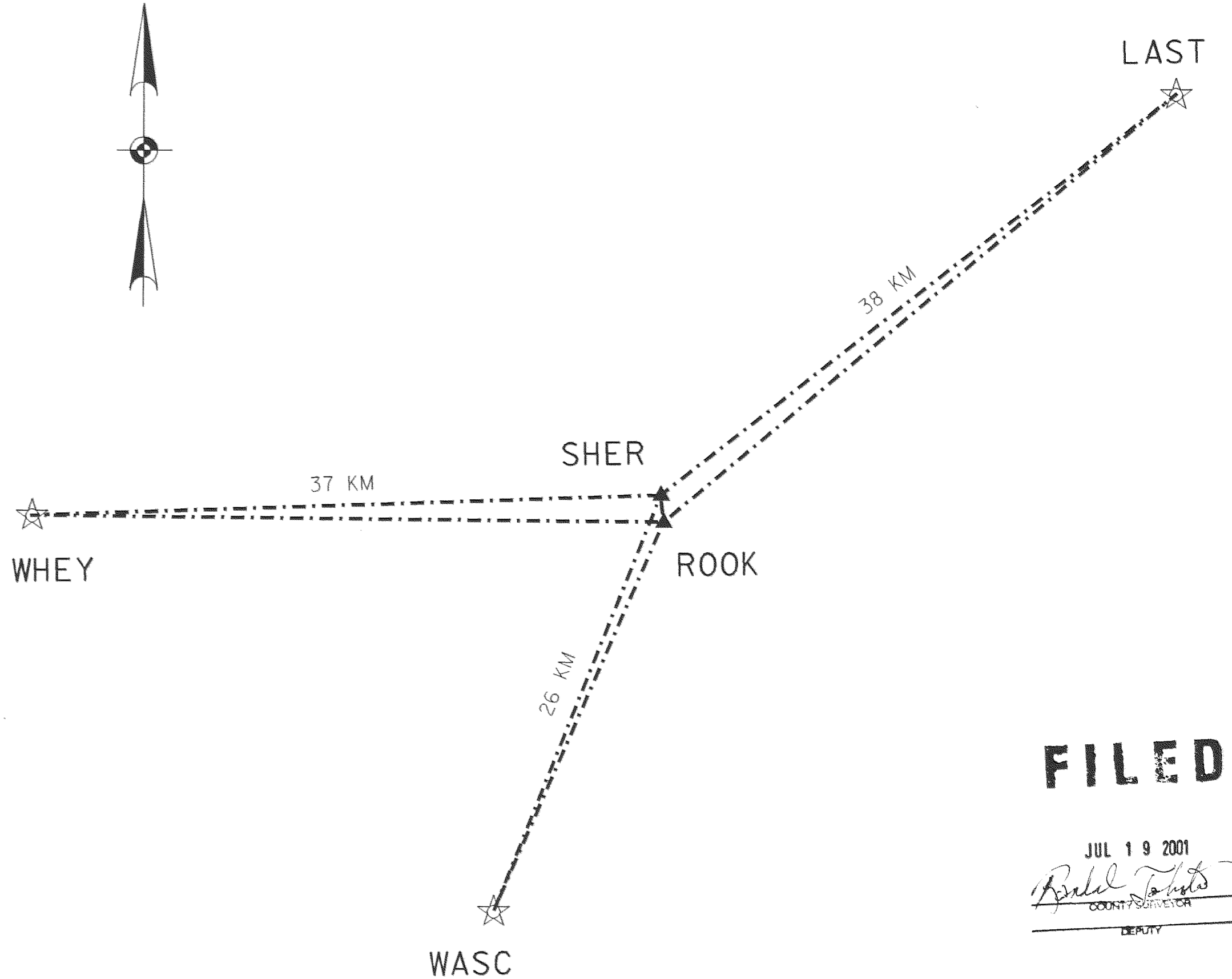
SE 1/4 SEC 17, T2S, R10E, WM
 SE 1/4 SEC 20, T2S, R10E, WM

HOOD RIVER COUNTY SURVEYOR

RECEIVED _____

ACCEPTED FOR FILING _____

SURVEY NUMBER _____



NETWORK DIAGRAM NOT TO SCALE

FILED

JUL 19 2001

Rahul Taha
 COUNTY SURVEYOR
 DEPUTY



OREGON DEPARTMENT OF TRANSPORTATION

GEOMETRONICS UNIT
 200 HAWTHORNE AVE. SE, SUITE B250
 SALEM, OR 97301-5193
 (503)986-3103; FAX (503)986-3548

GEODETIC SURVEY REPORT

MP 72.7 - MP 73.4 HOOD RIVER HIGHWAY (ROCKFALL)

FOR OREGON DEPARTMENT OF TRANSPORTATION REGION 1

HOOD RIVER COUNTY	FILE 94016	KEY NO.: 06011	SHEET	OF
DATE OF SURVEY: JULY 1994	DRAWN BY: KDW	FILE NAME: 94016GPS.DGN	1	2

REGISTERED
 PROFESSIONAL
 LAND SURVEYOR

Ranvir Singh
 OREGON
 JULY 26, 1988
 RANVIR SINGH
 2363

EXPIRES 6/30/02

Rec'd 7-11-01 1600

GS 2001 047

NARRATIVE

SE 1/4 SEC 17, T2S, R10E, WM
 SE 1/4 SEC 20, T2S, R10E, WM

HOOD RIVER COUNTY SURVEYOR

RECEIVED _____

ACCEPTED FOR FILING _____

SURVEY NUMBER _____

THIS SURVEY WAS PERFORMED FOR THE REGION 1 SURVEY GROUP OF THE OREGON DEPARTMENT OF TRANSPORTATION. THE PURPOSE OF THIS SURVEY IS TO ESTABLISH GEODETIC CONTROL FOR THE "MP 72.7 - MP 73.4 HOOD RIVER HIGHWAY (ROCKFALL)" PROJECT LOCATED ALONG THE HOOD RIVER HIGHWAY, STATE HIGHWAY NUMBER 26, ROUTE 35.

THE SURVEY WAS COMPLETED IN JULY OF 1994. GPS SESSIONS WERE OBSERVED USING THREE ASHTECH SYSTEM MD-XII DUAL FREQUENCY GPS RECEIVERS. SERIAL NUMBERS FOR THE RECEIVERS WERE 700227A0865, 700227A0862, AND 700227A0858.

BRASS DISKS WERE SET IN TWO CONCRETE MONUMENTS BY ODOT PHOTOGRAMMETRY STAFF.

STATIC TIES WERE MADE ON EACH OF 21, 25, AND 26 JULY 1994 FROM HARN STATIONS "WASCO DAM", "WHEY" AND "LAST".

ALL FIELD OBSERVATIONS AND PROCESSING WERE COMPLETED BY ODOT PHOTOGRAMMETRY STAFF.

THE HORIZONTAL POSITIONS FOR THE SURVEY ARE BASED ON NAD83(1991) PUBLISHED VALUES FOR OREGON HARN STATIONS "WASCO DAM", "WHEY" AND "LAST".

ALL POST PROCESSING INCLUDING CONVERSION TO ORTHOMETRIC ELEVATIONS AND THE OREGON COORDINATE SYSTEM WAS COMPLETED USING ASHTECH'S PRISM AND FILLNET SOFTWARE. THERE WERE A TOTAL OF SIX BASELINES FROM THE HARN STATIONS TO THE PROJECT.

SUPPORTING DATA FOR THIS SURVEY IS LOCATED IN CONTROL FILE 94-016 OF THE ODOT GEOMETRONICS UNIT, SALEM OREGON.

THE ODOT PHOTOGRAMMETRY UNIT UNDER PRIOR MANAGEMENT CONDUCTED THIS SURVEY IN 1994. I TOOK OVER THE MANAGEMENT OF THE UNIT IN 1997 AND RECENTLY DISCOVERED THAT THE SURVEY HAD NOT BEEN FILED. I AM TAKING RESPONSIBLE CHARGE OF THE SURVEY AT THIS TIME AND PLACING IT INTO THE PUBLIC RECORD.

STATION DESCRIPTIONS

STATION "SHER"

THE MARK IS LOCATED 17.7 KILOMETERS SOUTH OF THE TOWN OF MT. HOOD ALONG THE EAST SIDE OF THE HOOD RIVER HIGHWAY. THE MARK SET IS A 75 MILLIMETER BRASS ODOT GEODETIC CONTROL POINT DISK, STAMPED "SHER 1994" IN A CONCRETE POST FLUSH WITH THE GROUND, WITH A MAGNET UNDER THE DISK. THE POST HAS A 0.3 METER SQUARE TOP.

TO REACH THE STATION FROM THE HOOD RIVER VALLEY RANGER STATION, GO SOUTH ON OREGON 35 17.2 KILOMETERS TO MARK ON THE LEFT.

THE MARK IS 8.96 METERS EAST OF MILEPOST 72, 10.36 METERS EAST OF EAST EDGE OF PAVEMENT, 0.64 METERS SOUTH OF A WITNESS POST, AND 27 METERS SOUTH OF THE EAST END OF A 24 INCH IRON PIPE.

STATION "ROOK"

THE MARK IS LOCATED 19.3 KILOMETERS SOUTH OF THE TOWN OF MT. HOOD ALONG THE WEST SIDE OF THE HOOD RIVER HIGHWAY. THE MARK SET IS A 75 MILLIMETER BRASS ODOT GEODETIC CONTROL POINT DISK, STAMPED "ROOK 1994" IN A CONCRETE POST FLUSH WITH THE GROUND, WITH A MAGNET UNDER THE DISK. THE POST HAS A 0.3 METER SQUARE TOP.

TO REACH THE STATION FROM THE HOOD RIVER VALLEY RANGER STATION, GO SOUTH ON OREGON 35 18.8 KILOMETERS TO MARK ON THE RIGHT.

THE MARK IS 36.58 METERS NORTHWEST OF MILEPOST 71, 9.08 METERS WEST OF WEST EDGE OF PAVEMENT, 0.46 METERS NORTH OF A WITNESS POST.

MONUMENT INFORMATION

GRID COORDINATES ARE OREGON COORDINATE SYSTEM NORTH ZONE NAD83/91
 LOCAL DATUM PLANE (LDP) COORDINATES REPRESENT TRUE GROUND DISTANCES. TO CONVERT LDP COORDINATES TO OREGON COORDINATE SYSTEM NORTH ZONE MULTIPLY LDP COORDINATES BY 0.99976222.

ORTHOMETRIC ELEVATIONS ARE NGVD29 CONVERTED TO METERS BASED ON ELLIPSOID HEIGHT WITH GEOID 93 SEPARATIONS

STATION DESIGNATION	GRID COORDINATES		LDP COORDINATES		GPS DERIVED		ELLIPSOID HEIGHT (M)	ORTHOMETRIC HEIGHT (M)
	EASTING (m) (NAD83)	NORTHING (m) (NAD83)	EASTING (m) (NAD83)	NORTHING (m) (NAD83)	LATITUDE (N)	LONGITUDE (W)		
SHER	2416261.923	192388.884	2416836.598	192434.641	45° 23' 34.83918"	121° 34' 10.22282"	966.16	946.19
ROOK	2416414.888	190816.969	2416989.600	190862.352	45° 22' 43.98704"	121° 34' 02.23565"	1006.55	986.61

FILED

JUL 19 2001

Robert Light
 COUNTY SURVEYOR
 DEPUTY

I, RANVIR SINGH, CERTIFY THAT ALL SHEETS OF THIS REPORT HAVE BEEN PRODUCED IN ACCORDANCE WITH THE CURRENT STANDARDS FOR ARCHIVABLE DOCUMENTS AS ESTABLISHED BY THE OREGON ASSOCIATION OF COUNTY ENGINEERS AND SURVEYORS. SPECIFICALLY, THIS REPORT IS PLOTTED USING HEWLETT - PACKARD INK CARTIDGE *51645A ON CONTINENTAL MEDIA JPC-4MI.

REGISTERED PROFESSIONAL LAND SURVEYOR

Ranvir Singh
 OREGON
 JULY 26, 1988
 RANVIR SINGH
 2363

EXPIRES 6/30/02



OREGON DEPARTMENT OF TRANSPORTATION

GEOMETRONICS UNIT
 200 HAWTHORNE AVE. SE, SUITE B250
 SALEM, OR 97301-5193
 (503)986-3103; FAX (503)986-3548

GEODETIC SURVEY REPORT

MP 72.7 - MP 73.4 HOOD RIVER HIGHWAY (ROCKFALL)

FOR OREGON DEPARTMENT OF TRANSPORTATION REGION 1

HOOD RIVER COUNTY	FILE 94016	KEY NO.: 06011	SHEET	OF
DATE OF SURVEY: JULY 1994	DRAWN BY: KDW	FILE NAME: 94016GPS.DGN	2	2

CS 2001 047