

CURVE	DELTA	RADIUS	ARC LENGTH	TANGENT	CHORD ANGLE	CHORD LENGTH
C1	69°39'54"	36.17	43.98	25.17	N30°07'41"W	41.32

WILLIAMS AVE.

ERWIN AVE.

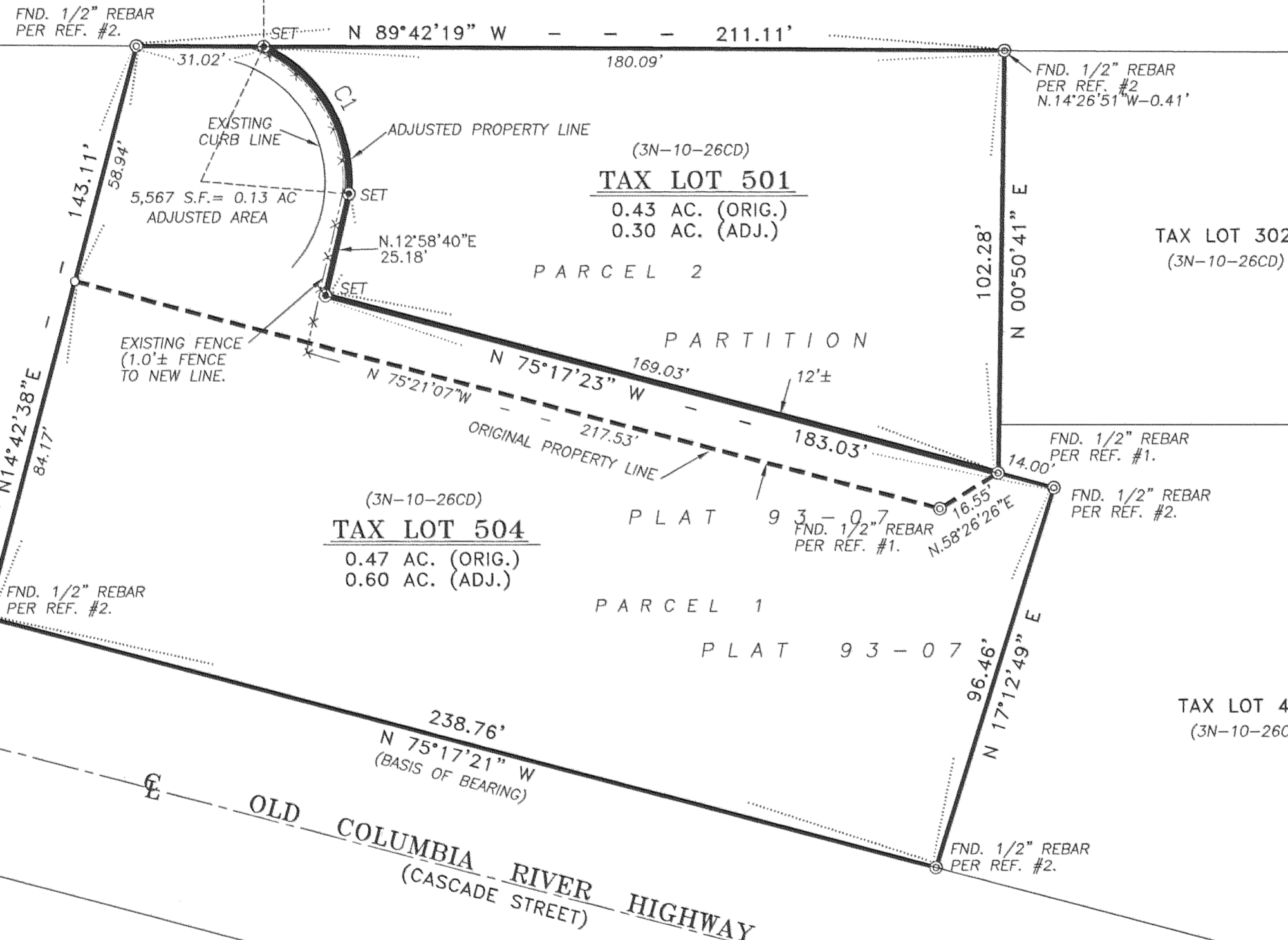
WASCO STREET

0' 10' 20' 30' 60'

SCALE IN FEET

NOTES:

BEARINGS BASED ON PARTITION PLAT 93-07 BY KLEIN & ASSOC. PER REFERENCE No. 1.



LEGEND:

- ⊙ SET 5/8" X 30" REBAR WITH YELLOW PLASTIC CAP, INSCRIBED "BESEDA, LS 50800"
- ⊙ FOUND MONUMENTS, AS NOTED.
- CALCULATED CORNERS, NOT SET.
- SET HUB & TACK.
- SET P.K. NAIL OR AS NOTED.
- ◆ SET BRASS SCREW AND WASHER, "BESEDA, 50800"
- x- EXISTING FENCE LINE.

FILED

REFERENCES:

- 1) PARTITION PLAT 93-07 BY KLEIN AND ASSOC. FILED APRIL 13, 1993.
- 2) BOUNDARY ADJUSTMENT SURVEY FOR NANCY WESCHE BY KLEIN AND ASSOC. CS 92-045 FILED JUNE, 1992
- 3) SITE-TOPOGRAPHY PLAN BY TENNESON ENGINEERING CORP. W.O. #9353, DEC. 22, 1998.

NARRATIVE:

THE PURPOSE OF THIS SURVEY WAS TO ADJUST THE COMMON LINE BETWEEN PARCELS 1 AND 2 OF HOOD RIVER COUNTY PARTITION PLAT 93-07. REFERENCE SURVEY #1, BY KLEIN & ASSOCIATES, WAS THE ORIGINAL PARTITION PLAT. MONUMENTS WERE FOUND, AS SHOWN ON THE SURVEY, FROM THIS PLAT. THESE MONUMENTS WERE USED AS BASIS OF BEARING AND CALCULATION FOR THE LINE ADJUSTMENT. WITH ESTABLISHMENT OF THE PARCEL EXTERIORS, THE COMMON EAST-WEST LINE BETWEEN THESE PARCELS WAS ADJUSTED TO FIT THE EXISTING IMPROVEMENTS AND LANDOWNERS DIRECTION.

SET AS SHOWN ON THE SURVEY, 5/8" X 30" REBAR WITH YELLOW PLASTIC CAP INSCRIBED "BESEDA LS 50800".

REGISTERED PROFESSIONAL LAND SURVEYOR
 BENJAMIN B. BESEDA
 50800

EXPIRES: 12/31/01

JUL 19 2001

Benjamin B. Beseda
 DEPUTY

Date	No.	Revisions	By	App.
BOUNDARY LINE ADJUSTMENT SURVEY BETWEEN TAX LOTS 501 & 504, 3N-10-26CD PARCELS 1 & 2, PARTITION PLAT 93-07 FOR COLUMBIA RIVER BANK IN SE.1/4 OF SW.1/4, SECTION 26, T.3 N., R.10 E. W.M. HOOD RIVER, HOOD RIVER COUNTY, OREGON				
TENNESON ENGINEERING CORP.				
CONSULTING ENGINEERS 409 LINCOLN STREET THE DALLES, OREGON 97058 541-296-9177 FAX 541-296-6657				
Survey	Calculation	Design	Date	Scale
B.R.H.	B.B.B.		4-10-01	1"=30'
Drawn	DWG. No.	Checked & App.	Work Order No.	Sheet
S.D.H.	10007	<i>B.B.B.</i>	10007	1 of 1

REC'D: 7-9-01 1600

CS 2001 046