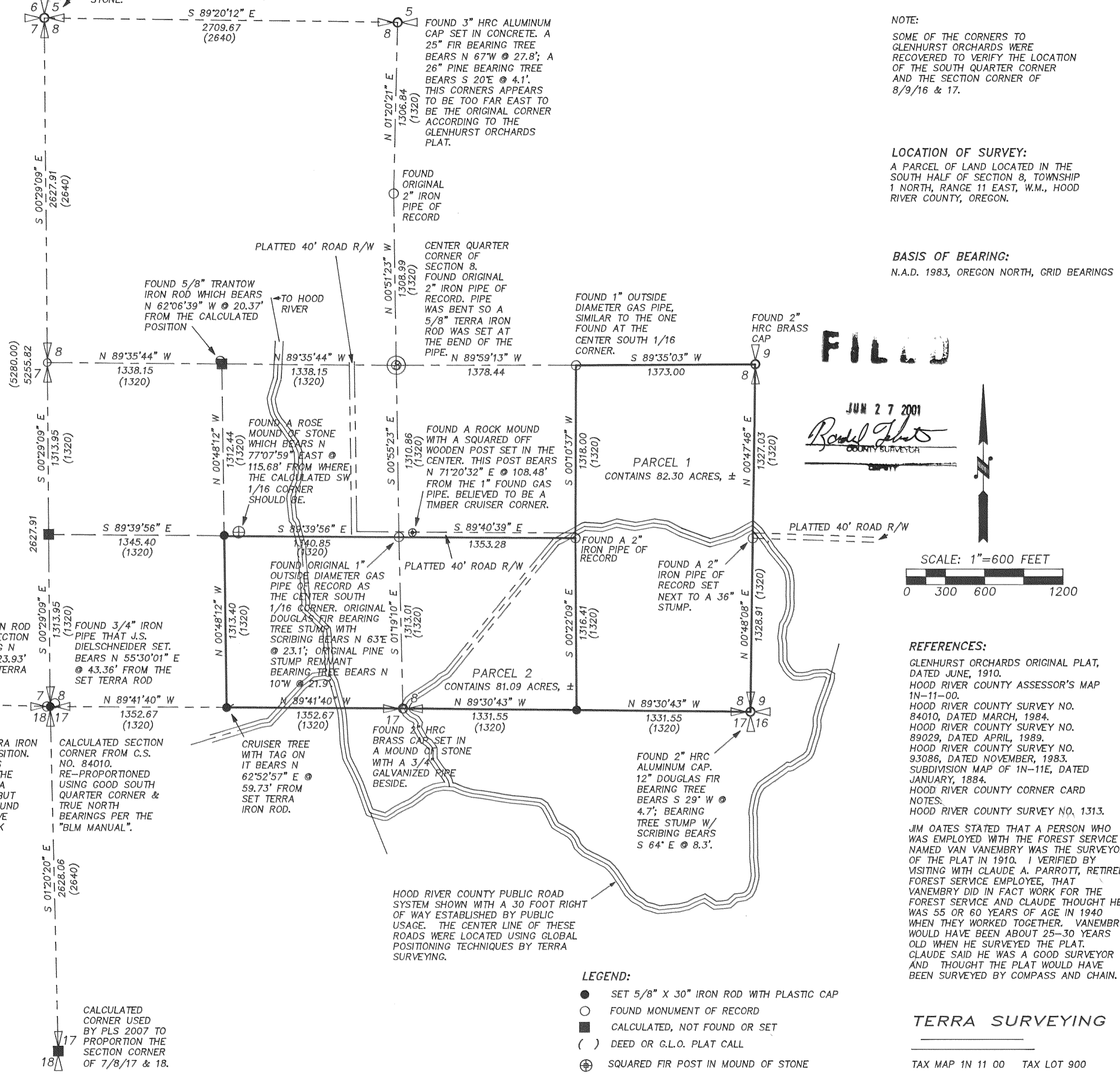


FILED
RECORDS AND ASSESSMENT
HOOD RIVER CO.

JUN 26 9 02 AM '01

FOUND 3/4" IRON
PIPE STICKING 8"
ABOVE GROUND IN
SMALL ROSE OF
STONE.



NARRATIVE:
SEE THE FACE OF THE PLAT FOR NOTES.

NOTE:
SOME OF THE CORNERS TO
GLENHURST ORCHARDS WERE
RECOVERED TO VERIFY THE LOCATION
OF THE SOUTH QUARTER CORNER
AND THE SECTION CORNER OF
8/9/16 & 17.

LOCATION OF SURVEY:
A PARCEL OF LAND LOCATED IN THE
SOUTH HALF OF SECTION 8, TOWNSHIP
1 NORTH, RANGE 11 EAST, W.M., HOOD
RIVER COUNTY, OREGON.

BASIS OF BEARING:
N.A.D. 1983, OREGON NORTH, GRID BEARINGS

File Number 200119 P
Instrument received on the 26th day of
JUNE, 2001 at 9:02 A.M.
Cindy Judah - Deputy Clerk
Hood River County Director of Records
and Assessments.

SURVEYOR'S CERTIFICATE
I, Roy O. Gaylord,
being first duly sworn, depose and say that I have
correctly surveyed and marked with proper
monuments the lands represented on this Partition
Plat, the boundaries being described in Instrument
940836, recorded March 10, 1994,
Hood River County Deed Records to
Jimmie H. Oates & Marjorie R. Oates, Trustees
for the Marjorie R. Oates Living Trust.



ACKNOWLEDGMENTS
We the owner(s) of the land shown herein, hereby
declare that this division of land has been made with
our free consent and in accordance with our desires.
Jimmie H. Oates DATE 6-25-2001
Marjorie R. Oates DATE 6-25-2001
Mary Jane Dethman DATE 6-25-2001

STATE OF Oregon }
COUNTY OF Hood River } s.s.
Subscribed and sworn to before me on this
25th day of June, 2001
by Jimmie H. Oates
JAMES S. GAYLORD
OFFICIAL SEAL
NOTARY PUBLIC-OREGON
COMMISSION NO. 305399
MY COMMISSION EXPIRES DEC. 12, 2001
(Seal)

APPROVALS
I hereby certify that all taxes and assessments due
hereon have been fully paid as required by law.
Candace A. Dorsey
Hood River County Director of Budget and
Finance

I hereby certify this partition was ex-
amined and approved as of this 25th day
of June, 2001.
Roy O. Gaylord
Hood River County Surveyor
I hereby certify this partition was ex-
amined and approved as of this 26th day
of June, 2001.
Michael Benedek
Hood River County Planning Director

Certified to be a true and
correct copy of the ORIGINAL
Deed of Records & Assessment
by Cindy Judah, Deputy

JUN 26 2001

PARTITION PLAT
for
JIMMIE H. OATES, MARJORIE R. OATES & MARY JANE DETHMAN

TERRA SURVEYING
TAX MAP 1N 11 00 TAX LOT 900
DATE: JUNE, 2001
SCALE: 1" = 600'
PROJECT: 9940
P.O. BOX 617
HOOD RIVER, OREGON 97031
PHONE & FAX: (541) 386-4531
E-Mail terra@gorge.net

Revised 6-26-01 1500 CS 2001 043