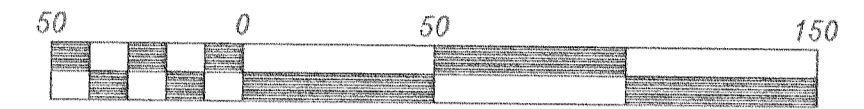
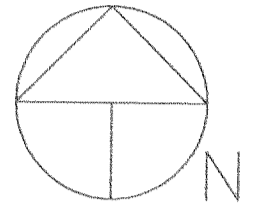
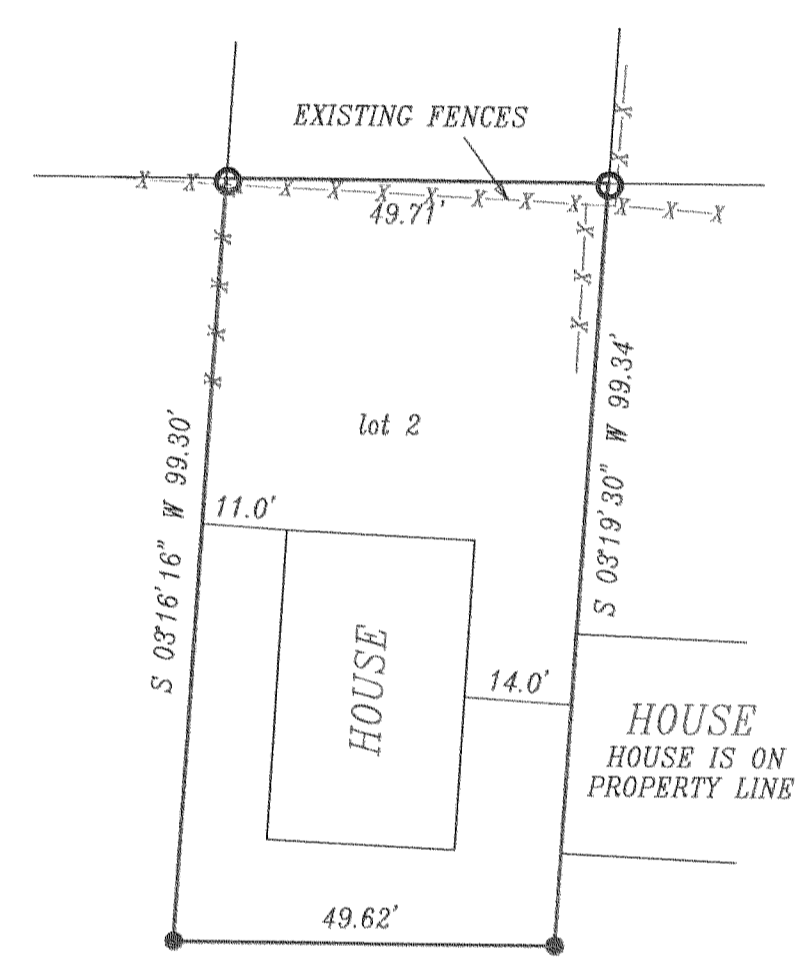
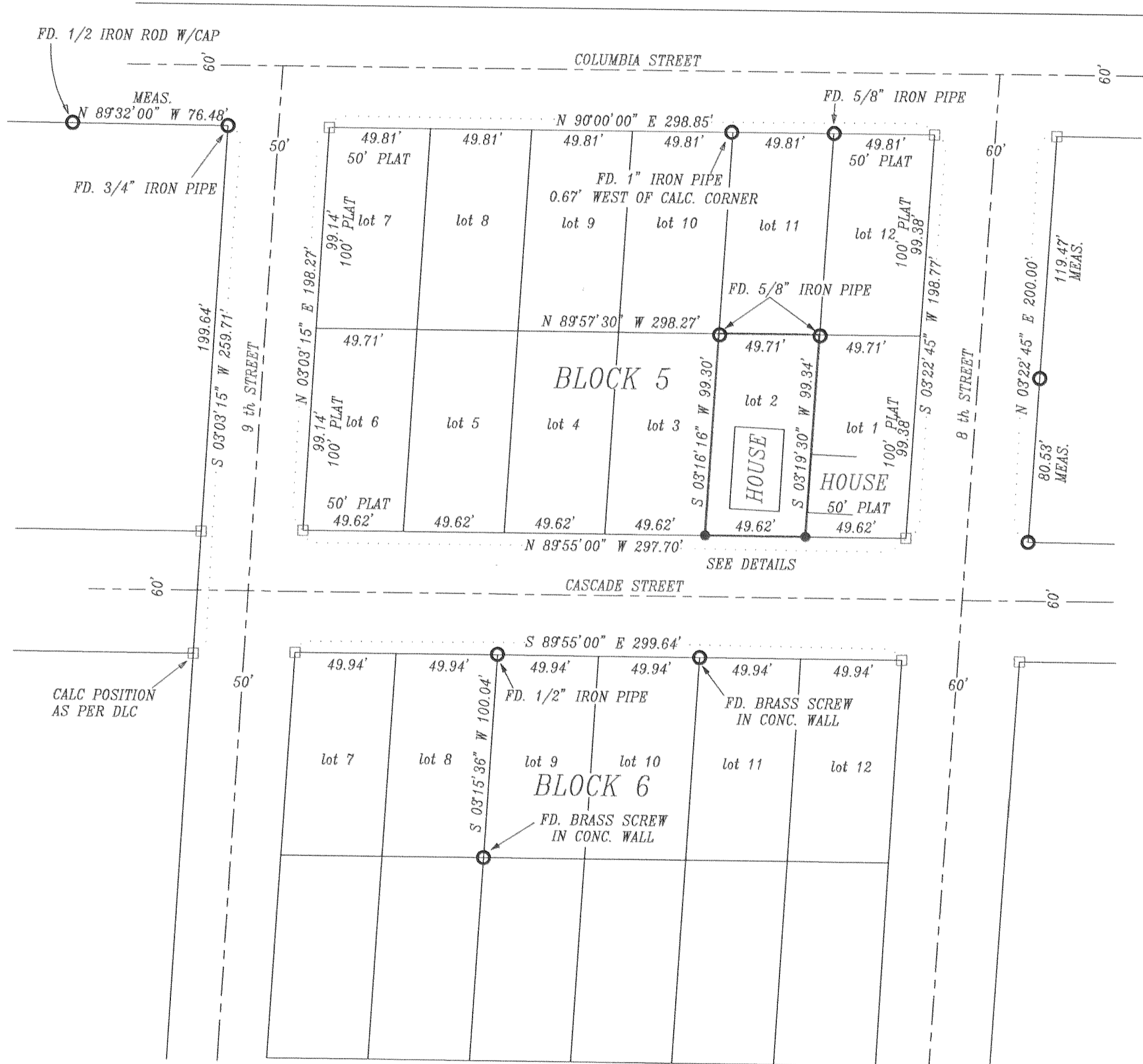


SURVEY IN
 LOT 2, BLOCK 5, WAUCOMA ADDITION
 TO THE CITY OF HOOD RIVER
 COUNTY OF HOOD RIVER, STATE OF OREGON



Scale 1" = 50 ft



DETAILS

LEGEND

- = SET 5/8" IR WITH PLASTIC CAP MARKED OR #932 & WA #22098 EXCEPT AS NOTED
- = FOUND MONUMENT AS NOTED
- = CALCULATED CORNER AS NOTED
- ⊗ = CALCULATED 1/4 COR AS NOTED
- ⊕ = CALCULATED SEC COR AS NOTED
- ⊗ = FOUND 1/4 COR AS NOTED
- ⊕ = FOUND SEC COR AS NOTED

NARRATIVE OF SURVEY

THE PURPOSE OF THIS SURVEY WAS TO LOCATE THE BOUNDARY OF THE PARCEL SHOWN HEREIN. EXISTING MONUMENTS SET ALONG THE NORTH LINE OF BLOCK 5 AND MONUMENTS FOUND ALONG THE NORTH LINE OF BLOCK 6 WERE HELD TO LOCATE THE NORTH AND SOUTH LINE OF BLOCK 5. MONUMENT ALONG THE WEST SIDE OF BLOCK 3 WERE HELD TO LOCATE THE EAST SIDE OF BLOCK 5. THE BLOCK WAS THEN PROPORTION.

REFERENCE SURVEYS

- WYEAST SURVEYS CS #96022
- TERRA SURVEYING CS #90002
- TERRA SURVEYING CS #89111
- TERRA SURVEYING CS #87039
- DLC SURVEYING CS #86058

FILED

JUN 27 2001

Anthony C. Klein
 COUNTY SURVEYOR
 DEPUTY

REGISTERED
 PROFESSIONAL
 LAND SURVEYOR

OREGON
 JULY 17, 1970
 ANTHONY C. KLEIN
 932

Expires 6-30-01



Klein & Assoc.

LAND SURVEYING
 1203 12th Street Suite H
 Hood River, Oregon 97031
 Tele: (541)386-3322
 DATE SURVEYED: MAY 2001
 JOB NO.: 01025
 3N 10 25CD TAXLOT 2800
 3N 10 25CC TL 14300

SURVEY
 FOR
 CAROLYN SMALE

6/24/01

CS 2001 042