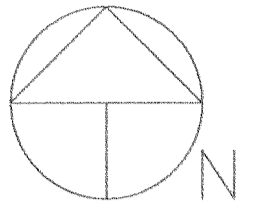
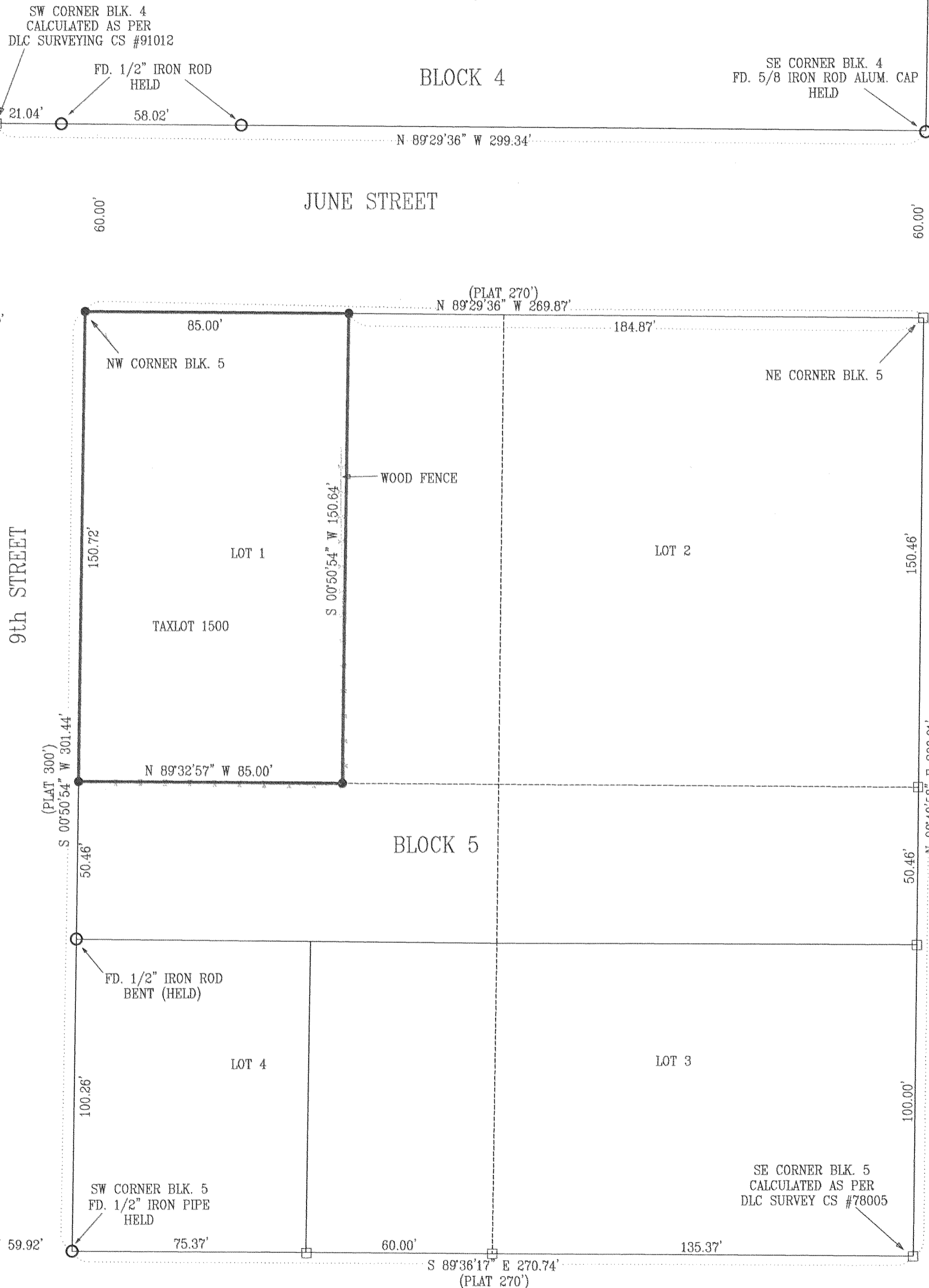


SURVEY IN
PLEASANT VIEW, N.W. 1/4, SEC. 36, T 3 N, R 10 E, WM
HOOD RIVER COUNTY, STATE OF OREGON



Scale 1" = 30 ft



LEGEND

- = SET 5/8" IR WITH PLASTIC CAP MARKED OR #932 & WA #22098 EXCEPT AS NOTED
- = FOUND MONUMENT AS NOTED
- = CALCULATED CORNER AS NOTED
- ⊠ = CALCULATED 1/4 COR AS NOTED
- ⊞ = CALCULATED SEC COR AS NOTED
- ◀ = FOUND 1/4 COR AS NOTED
- ⊞ = FOUND SEC COR AS NOTED

NARRATIVE OF SURVEY

THE PURPOSE OF THIS SURVEY WAS TO LOCATE THE BOUNDARY OF THE PARCEL SHOWN HEREIN. A FOUND 1/2" IRON PIPE AT THE SOUTHWEST CORNER OF BLOCK 5 AND A FOUND 1/2" IRON ROD SET BY DLC SURVEYING WAS USED TO ESTABLISH THE WEST AND SOUTH LINE OF BLOCK 5. A FOUND 5/8" IRON ROD SET BY NEWTON AT THE SOUTHEAST CORNER OF BLOCK 4 AND TWO FOUND 1/2" IRON RODS SET BY DLC ALONG THE SOUTH LINE OF BLOCK 4 WERE USED TO ESTABLISH THE NORTH LINE OF BLOCK 5. ALL MONUMENTS FOUND AND ESTABLISHED ALONG WITH THE MEASURED BEARINGS AND DISTANCES ARE SHOWN HEREIN.

REFERENCE SURVEYS

DLC SURVEYING CS #78005
BISHOP SURVEYING CS #80083
DLC SURVEYING CS #91012

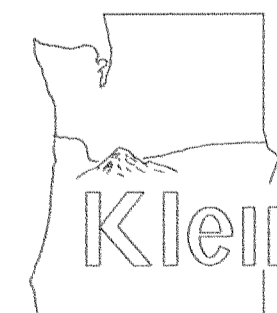
BASIS OF BEARING
ASSUMED

FILED
MAR 12 2001
Anthony C. Klein
COUNTY SURVEYOR
DEPUTY

REGISTERED
PROFESSIONAL
LAND SURVEYOR

OREGON
JULY 17, 1970
ANTHONY C. KLEIN
932

EXPIRES 6-30-01



Klein & Assoc.

LAND SURVEYING
1203 12th Street Suite H
Hood River, Oregon 97031
Tele: (503)386-3322
DATE SURVEYED: JAN, 2001
JOB NO.: 01002
3N 10 36BC 1500

SURVEY
FOR
HOOD RIVER COUNTY SCHOOL DISTRICT