

Duplicate FILED

FILED RECORDS AND ASSESSMENT HOOD RIVER CO. Jan 17 9 20 AM '01

REGISTERED PROFESSIONAL LAND SURVEYOR WILLIAM J. FROST

Frost's Land, Surveying & Cattle Company 304 Pine Street Hood River, Ore. 97031

PARTITION PLAT For tentative Major Partition Map 99-342. Being Tax Lot N: 3600, Assessor Map TIN 10E 28, Hood River County, Oregon.

FEB 8 2001 Rodal Tablets COUNTY SURVEYOR

Partition Plat # 200105P

Instrument received on the 17th day of January 2001 at 9:20 A.M.

See K. Shull Hood River County Director of Records and Assessments

SURVEYOR'S CERTIFICATE

WILLIAM J. FROST being first duly sworn, depose and say that I have correctly surveyed and marked with proper monuments the lands represented on this Partition Plat...

DECLARATION: We the undersigned, being the fee owner of the land described hereon, hereby offer for dedication the 60' non-exclusive easement, labeled hereon as CORNER LOOP...

ACKNOWLEDGEMENTS

We the owner(s) of the land shown herein, hereby declare that this division of land has been made with our free consent and in accordance with our desire.

OWNER DATE by William Frost 1-8-2001

STATE OF Oregon COUNTY OF Hood River

Notary Public for the State of Oregon My Commission Expires April 24, 2001

APPROVALS

I hereby certify that all taxes and assessments due hereon have been fully paid as required by law.

I hereby certify this partition was examined and approved as of this 11th day of JANUARY 2001

I hereby certify this partition was examined and approved as of this 17th day of JAN 2001

BASIS OF BEARINGS:

The bearings shown hereon are based on the Easterly Line of the S.E. 1/4 of Sec. 28, T.10N., R.10E., W.M., being N00°03'15"W, as shown on a map, as per D.L.C. Survey 2/5/81.

MONUMENT NOTES:

- 1. Found monuments, as noted, at all points shown.
2. Set 3/4" Iron Pipe bearing Brass Disk stamped W.J. Frost PL50 1971 at all points shown thus, unless otherwise noted.

NARRATIVE:

The purpose of this Plat is to file for the record the Partitioning of Tax Lot 3600, Assessor Map TIN 10E 28, Being a portion of the S.E. 1/4 of Sec. 28, T.10N., R.10E., Willamette Meridian, Hood River County, Oregon.

Also to file for the Record the location and character of all Found and established Monuments that set forth the Boundary Limits of the Parcels Shown hereon.

SANITARY SEWER DISPOSAL SYSTEM:

is available to each parcel shown hereon, in accordance with the requirements of the Hood River County Health Department Sanitarian Letters dated Nov. 29 1999 for parcels 1, 2 and 3.

DOMESTIC WATER:

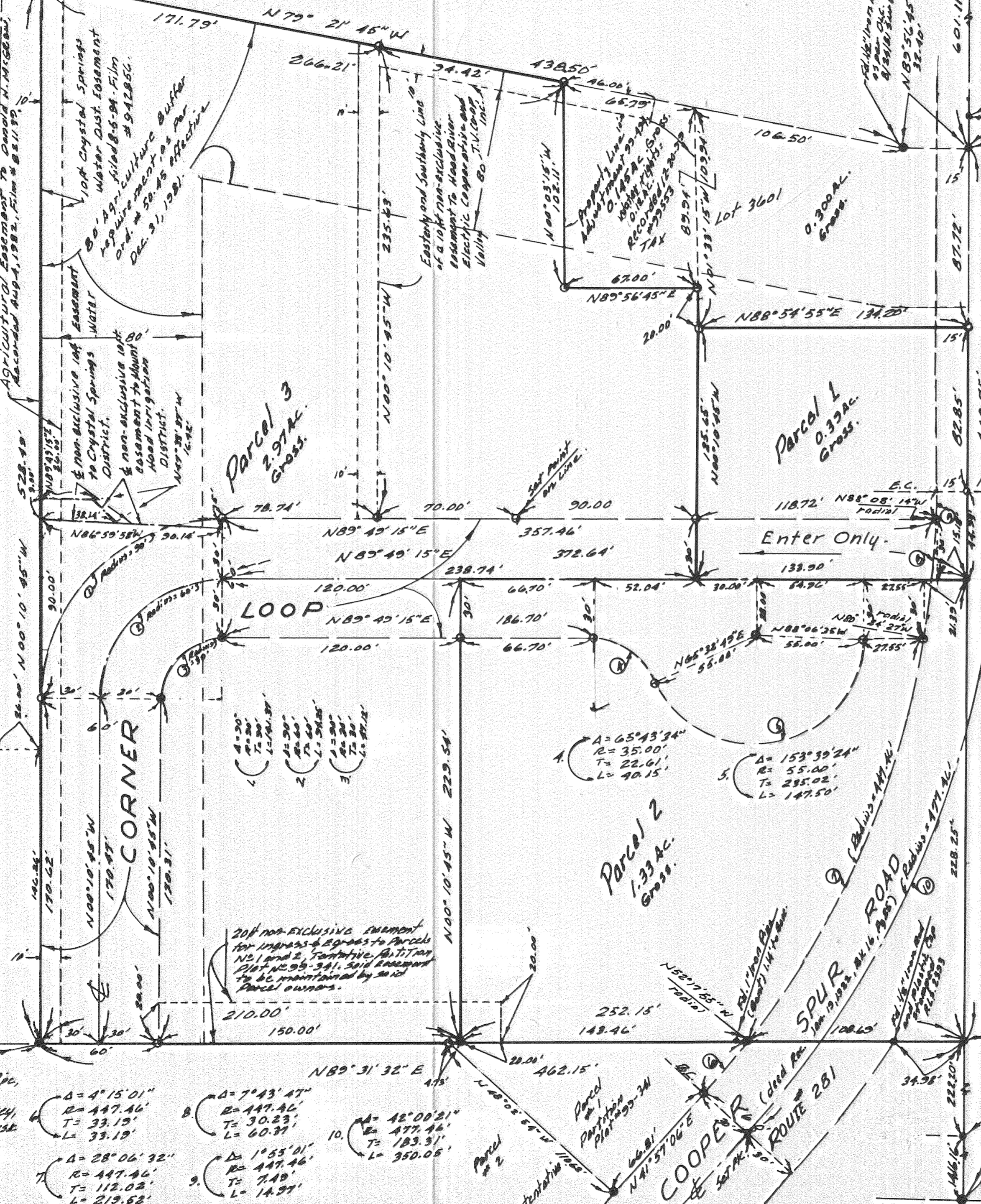
is available to each parcel shown hereon from Crystal Springs Water District. The service system and Meters have been installed to each parcel in accordance with the requirements of said District.

WATER RIGHTS STATEMENT:

All rights are subject to the statutory power of Mount Hood Irrigation District and Crystal Springs Water District.

MOUNT HOOD IRRIGATION DISTRICT WATER RIGHTS:

- Parcel No. 1 = 0.39 AC.
Parcel No. 2 = 1.10 AC.
Parcel No. 3 = 0.32 AC.



Curve data: 1. Delta=4°15'01", R=447.46', T=33.19', L=33.19'. 2. Delta=7°43'47", R=447.46', T=30.23', L=60.31'. 3. Delta=28°06'32", R=447.46', T=112.08', L=219.53'. 4. Delta=1°55'01", R=447.46', T=7.49', L=14.97'. 5. Delta=42°00'21", R=477.46', T=183.31', L=350.08'.

