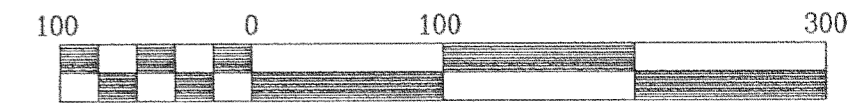
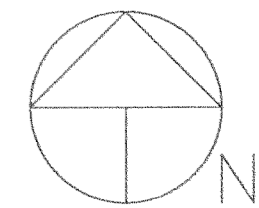


SURVEY IN
SE 1/4, SEC. 33, T 3 N, R 10 E, W.M.
HOOD RIVER COUNTY, STATE OF OREGON

CENTER QUARTER CORNER
SECTION 33

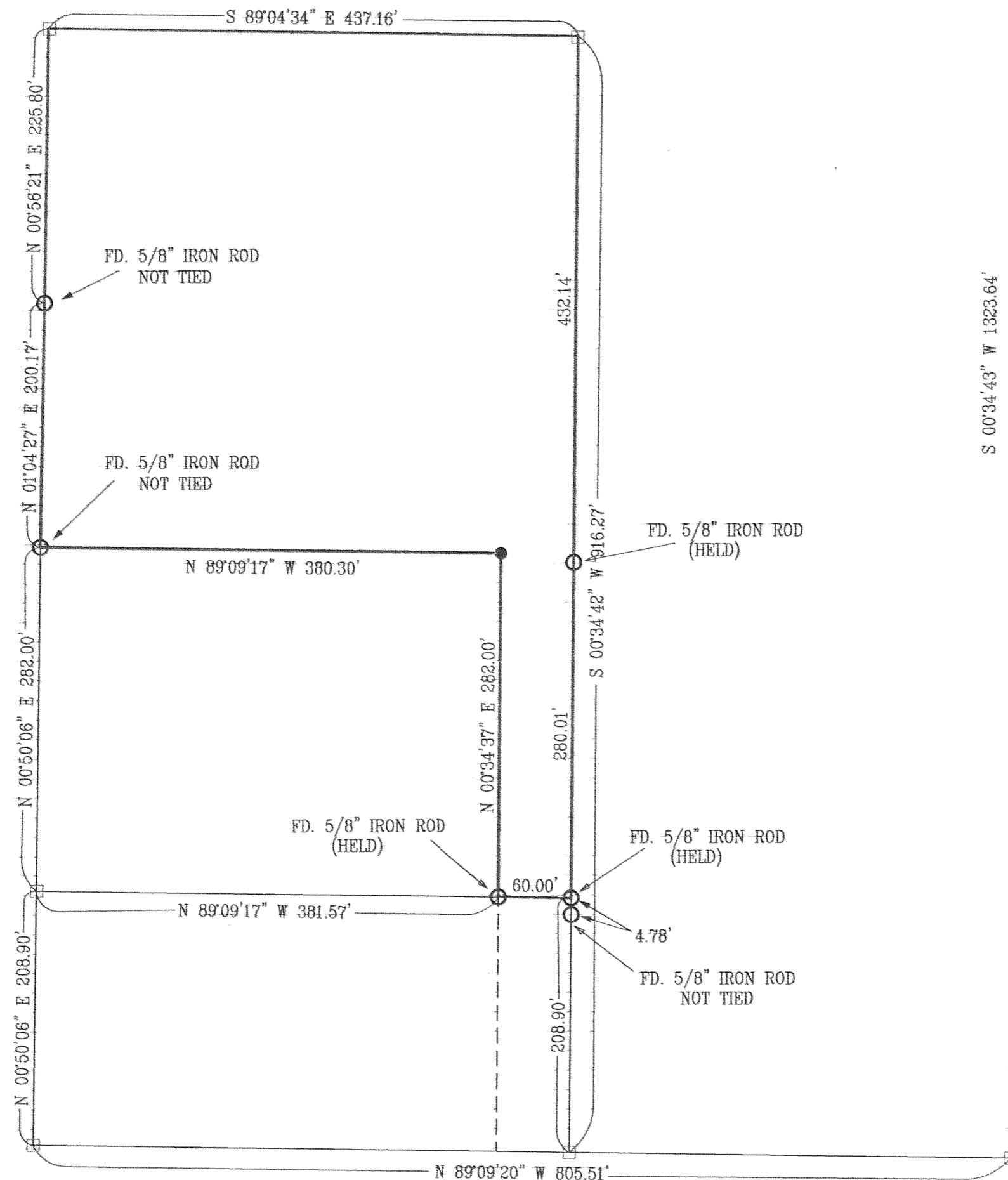
NORTHEAST CORNER
NW1/4, SE 1/4



Scale 1" = 100 ft

LEGEND

- = SET 5/8" IR WITH PLASTIC CAP MARKED OR #932 & WA #22098 EXCEPT AS NOTED
- = FOUND MONUMENT AS NOTED
- = CALCULATED CORNER AS NOTED
- ⊠ = CALCULATED 1/4 COR AS NOTED
- ⊞ = CALCULATED SEC COR AS NOTED
- ⊞ = FOUND 1/4 COR AS NOTED
- ⊞ = FOUND SEC COR AS NOTED



COUNTRY CLUB ROAD

BASIS OF BEARING
SURVEY BY WYEAST SURVEYS
CS #98042

REFERENCE SURVEYS
SURVEY BY WYEAST SURVEYS
CS #98042

NARRATIVE OF SURVEY
THE PURPOSE OF THIS SURVEY IS TO LOCATE THE EXISTING MONUMENTS AND SET THE NORTHWEST CORNER OF THE FLAG. ALL MONUMENTS FOUND AND ESTABLISHED ALONG WITH THE MEASURED BEARINGS AND DISTANCES ARE SHOWN HEREIN.

SURVEY
FOR
TED PERRY

SOUTHEAST CORNER
NW 1/4, SE 1/4

FILED

DEC 15 2008
Robert Johnson
COUNTY SURVEYOR
DEPUTY

REGISTERED
PROFESSIONAL
LAND SURVEYOR

Anthony C. Klein

OREGON
JULY 17, 1970
ANTHONY C. KLEIN
932

Exp: 6-30-01



Klein & Assoc.

LAND SURVEYING
1203 12th Street Suite H
Hood River, Oregon 97031
Tele: (503)386-3322
DATE SURVEYED: NOV. 2000
JOB NO.: 00072