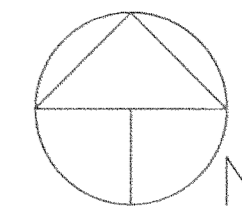
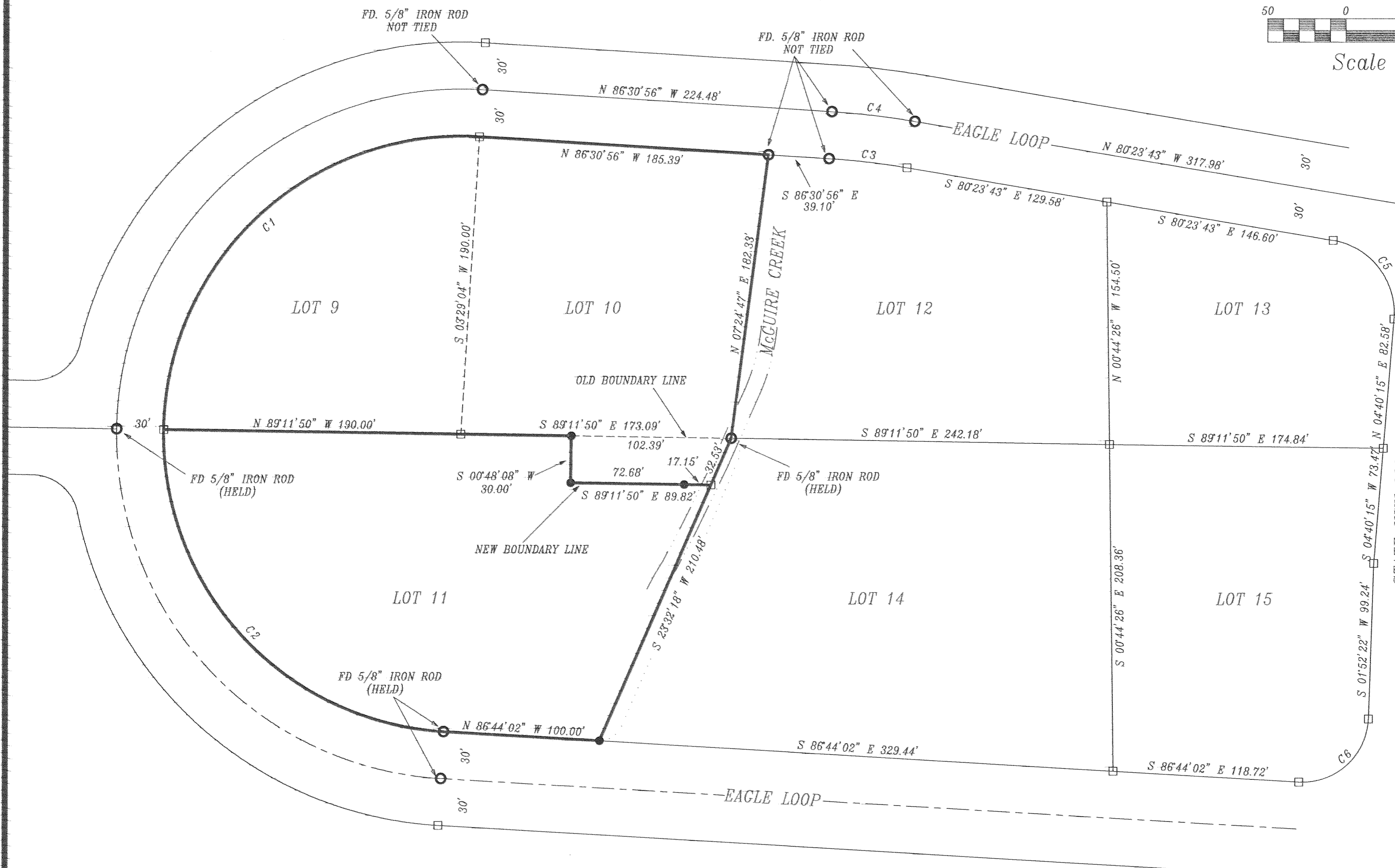


BOUNDARY LINE ADJUSTMENT
 IN JOHN WEBER BUSINESS PARK
 NE 1/4, SECTION 27, T 2 N, R 10 E, WM
 HOOD RIVER COUNTY, STATE OF OREGON



Scale 1" = 50 ft



LEGEND

- = SET 5/8" IR WITH PLASTIC CAP MARKED OR #932 & WA #22098 EXCEPT AS NOTED
- = FOUND MONUMENT AS NOTED
- = CALCULATED CORNER AS NOTED
- ⊗ = CALCULATED 1/4 COR AS NOTED
- ⊗ = CALCULATED SEC COR AS NOTED
- ⊗ = FOUND 1/4 COR AS NOTED
- ⊗ = FOUND SEC COR AS NOTED

FILED

DEC 14 2006

Anthony C. Klein
 COUNTY SURVEYOR
 DEPUTY

REGISTERED
 PROFESSIONAL
 LAND SURVEYOR

OREGON
 JULY 17, 1970
 ANTHONY C. KLEIN
 932
 Exp: 6-30-01



Klein & Assoc.

LAND SURVEYING
 1203 12th Street Suite H
 Hood River, Oregon 97031
 Tele: (503)386-3322
 DATE SURVEYED: NOV. 2000
 JOB NO.: 00076

REFERENCE SURVEYS
 JOHN WEBER BUSINESS PARK
 CS #90035

BASIS OF BEARING
 JOHN WEBER BUSINESS PARK
 CS #90035

NARRATIVE OF SURVEY
 THE PURPOSE OF THIS SURVEY WAS TO ADJUST THE BOUNDARY BETWEEN LOTS 9, 10 & 11 AND SET THE SOUTHEAST CORNER OF LOT 11 OF JOHN WEBER BUSINESS PARK. ALL MONUMENTS FOUND AND ESTABLISHED ALONG WITH THE MEASURED BEARINGS AND DISTANCES ARE SHOWN HEREIN.

BOUNDARY LINE ADJUSTMENT
 FOR
 ERIC CEDERSTAM