

NARRATIVE:

NO MAJOR DISCREPANCIES WERE FOUND DURING THE COURSE OF THIS SURVEY.

SEE FACE OF PLAT FOR DETAILS.

NOTE:

HELD DISTANCES FOR BLOCK 7 FROM CS NO. 88076 AS DID PLS 1799 ON CS NO. 99105. THIS BEST MATCHES OTHER DEFICIENCIES FOUND AND KEEPS IN LINE WITH MORE RECENT SURVEYS.

LOCATION OF SURVEY:

LOTS 6,7,8,9,16,17,18 AND 19, IN BLOCK 7, OF THE AMENDED PLAT OF IDLEWILD ADDITION TO HOOD RIVER, SECTION 26, TOWNSHIP 3 NORTH, RANGE 10 EAST, WILLAMETTE MERIDIAN, CITY OF HOOD RIVER, HOOD RIVER COUNTY, OREGON.

REFERENCES:

- HOOD RIVER COUNTY SURVEYORS OFFICE SURVEY NO. 99105, PLS 1799.
- HOOD RIVER COUNTY SURVEYORS OFFICE SURVEY NO. 97074, PLS 2393.
- HOOD RIVER COUNTY SURVEYORS OFFICE SURVEY NO. 88076, PLS 1028.
- HOOD RIVER COUNTY SURVEYORS OFFICE SURVEY NO. 85001, PLS 1028.
- HOOD RIVER COUNTY SURVEYORS OFFICE SURVEY NO. 84044.
- HOOD RIVER COUNTY SURVEYORS OFFICE SURVEY NO. 79029, PLS 896.
- HOOD RIVER COUNTY SURVEYORS OFFICE SURVEY NO. 77114.
- TERRA SURVEYING PROJECT NO. 9921, DATED APRIL 1999.
- HOOD RIVER COUNTY WARRANTY DEED, MICROFILM NO. 982542.
- HOOD RIVER COUNTY WARRANTY DEED, MICROFILM NO. 982547.
- HOOD RIVER COUNTY WARRANTY DEED, MICROFILM NO. 911512.
- HOOD RIVER COUNTY WARRANTY DEED, MICROFILM NO. 890796.

BASIS OF BEARING:

1986 CITY OF HOOD RIVER DATUM.

REGISTERED PROFESSIONAL LAND SURVEYOR

Roy O. Gaylord

OREGON
JULY 13, 1979
ROY O. GAYLORD
1815

Expires: June, 2001

LEGEND:

- SET 5/8" X 30" IRON ROD WITH PLASTIC CAP
- FOUND MONUMENT OF RECORD
- CALCULATED, NOT FOUND OR SET
- () DEED OR PLAT CALL

FILED

NOV 15 2000

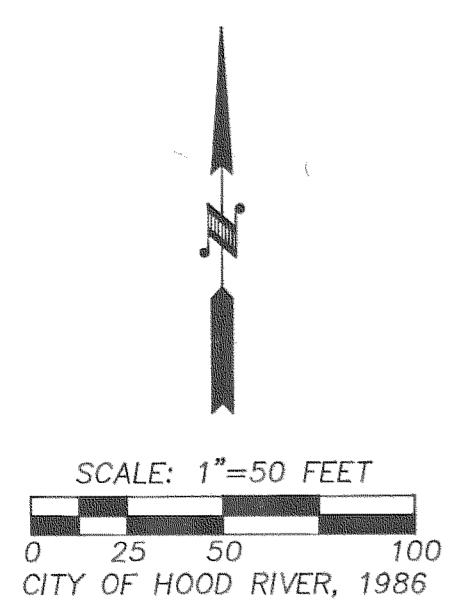
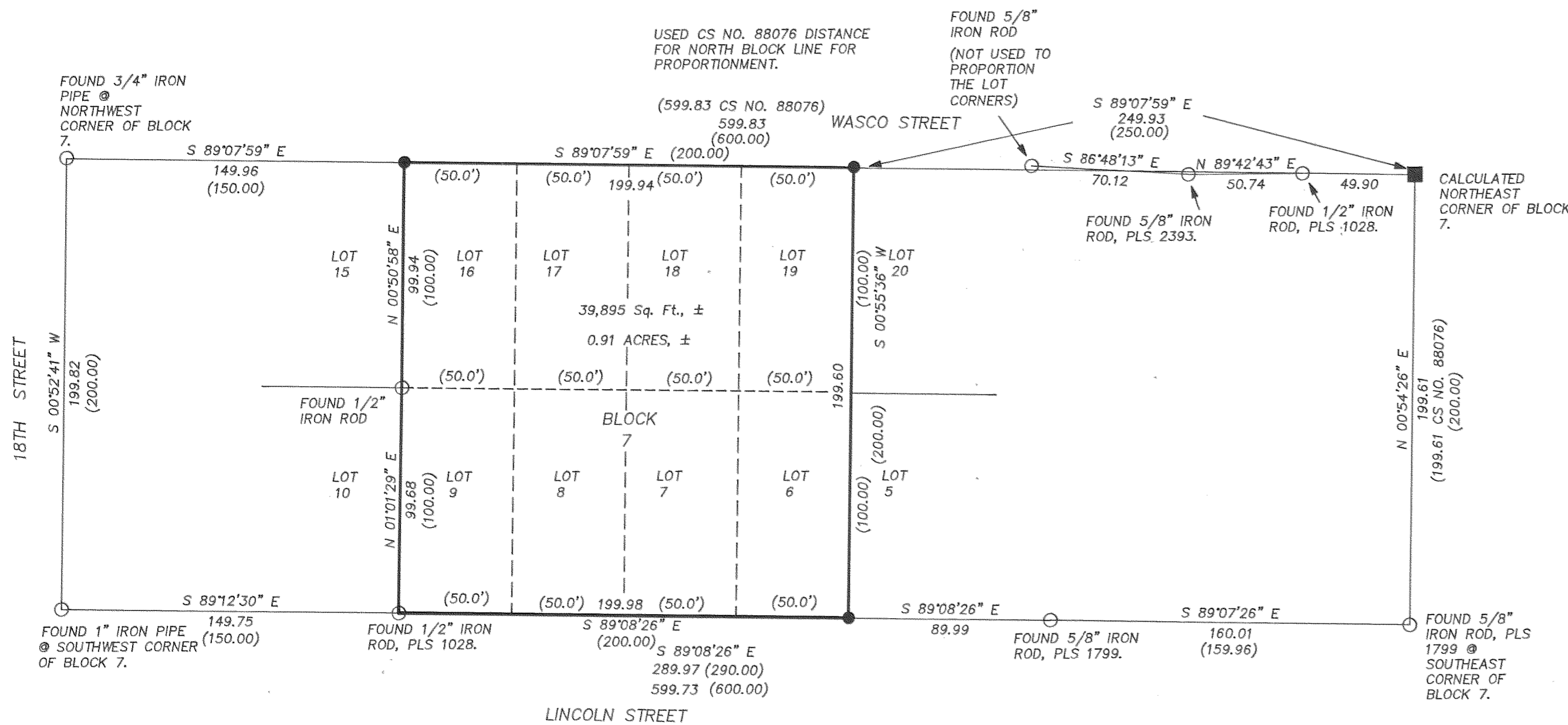
Ronald Blunt
COUNTY CLERK

TERRA SURVEYING

DATE: SEPTEMBER, 2000
SCALE: 1" = 50'
PROJECT: 2068PROP

P.O. BOX 617
HOOD RIVER, OREGON 97031
PHONE & FAX: (541) 386-4531
terra@gorge.net

PROPERTY BOUNDARY SURVEY
for
C.N.W. CONSTRUCTION, INC.



2000 090
30110 26DA