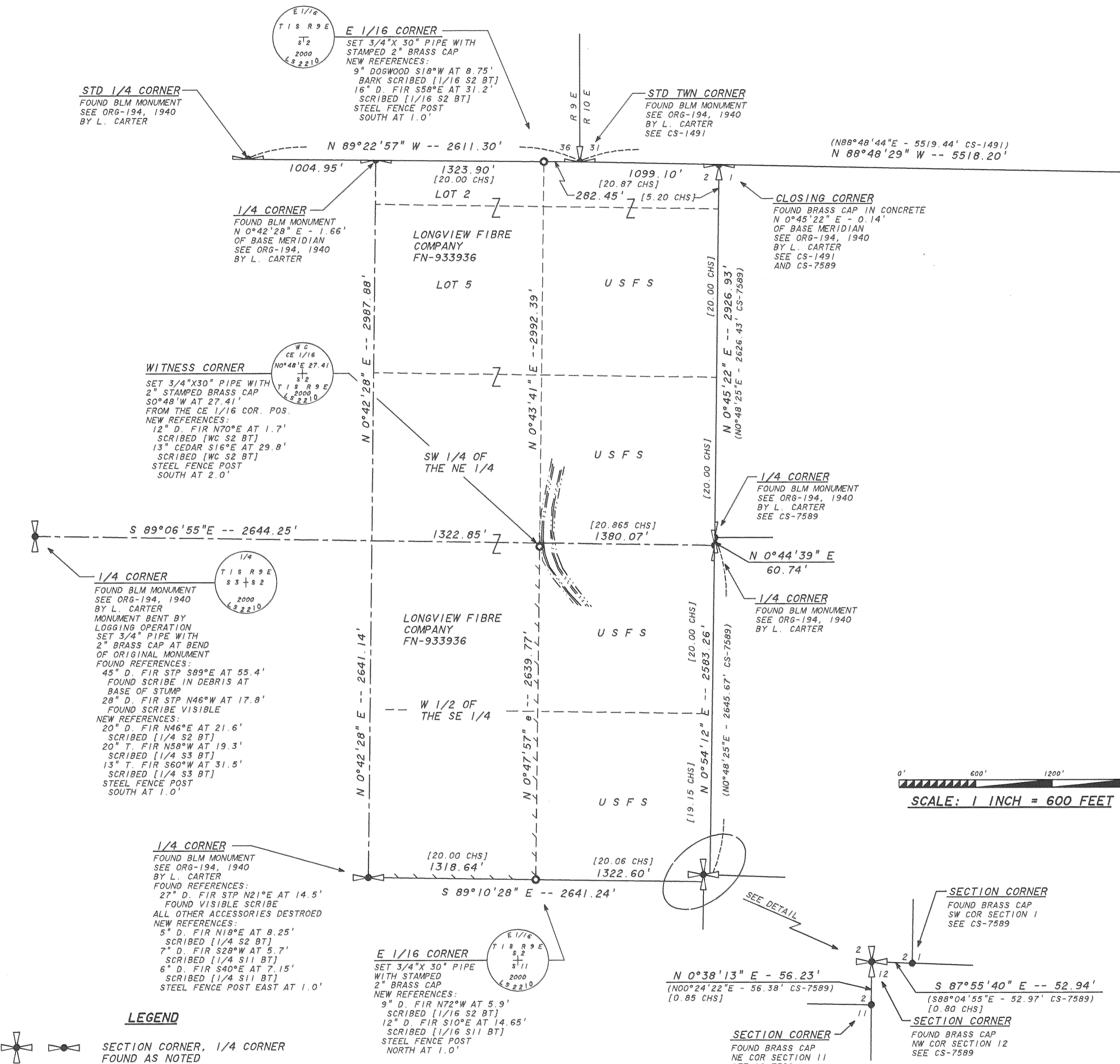


RECORD OF SURVEY
FOR
LONGVIEW FIBRE COMPANY
IN
SECTION 2, T 1 S, R 9 E, W.M.
HOOD RIVER, COUNTY

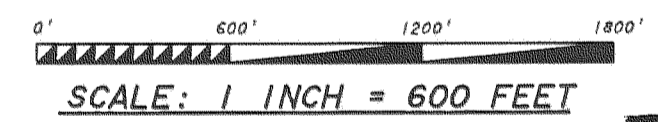
NARRATIVE

THE PURPOSE OF THIS SURVEY WAS TO ESTABLISH THE EAST LINE OF THE WEST 1/2 OF THE SOUTHEAST 1/4 OF SECTION 2. THE BASE MERIDIAN WAS ESTABLISHED BY D. THOMPSON UNDER CONTRACT ORG 79, APPROVED 1859. THE EAST TIER OF SECTIONS WAS RUN BY R. CAMPBELL UNDER CONTRACT ORG 789, APPROVED 1910. THE REMAINING SECTIONS WERE RUN BY L. CARTER UNDER CONTRACT ORG 194, APPROVED 1941. TENNESON ENGINEERING CORP. RECOVERED THE RECOVERED CORNERS ALONG THE BASE LINE OF TIN, R10E, AND THE RECOVERED CORNERS IN SECTION 1, T1S,R9E, SEE CS-1491 AND CS-7589. THIS SURVEY WAS DONE WITH TWO LEICA 399 GPS RECEIVERS AND A LEICA TC1105 TOTAL STATION. GPS CONTROL WAS ESTABLISHED NEAR THE SOUTH 1/4 OF SECTION 36, THE WEST 1/4 OF SECTION 2, THE SOUTH 1/4 OF SECTION 2 AND THE SOUTHWEST CORNER OF SECTION 36. THESE CORNERS WERE THEN TIED BY TRAVERSE. THE NORTH 1/4 CORNER OF SECTION 2, THE NORTHEAST CORNER OF SECTION 2, THE SOUTHWEST CORNER OF SECTION 31, THE EAST 1/4 CORNER OF SECTION 2, THE WEST 1/4 CORNER OF SECTION 1, THE NORTHWEST CORNER OF SECTION 12, THE NORTHEAST CORNER OF SECTION 11 AND THE SOUTHWEST CORNER OF SECTION 1 WERE OCCUPIED WITH A GPS RECEIVER. POSITIONS WERE DETERMINED BY DIFFERENTIAL GPS. A TRAVERSE WAS RUN FROM GPS CONTROL TO THE EAST 1/16 CORNER ON THE SOUTH LINE OF SECTION 2, NORTH ALONG THE EAST LINE OF SAID WEST HALF OF THE SOUTHEAST 1/4 TO THE CENTER EAST 1/16 CORNER LOCATION AND THEN CLOSED ON THE GPS CONTROL. THE CENTER EAST CORNER FELL BELOW THE HIGH WATER MARK OF THE MIDDLE FORK OF HOOD RIVER. I ESTABLISHED A WITNESS CORNER ON LINE SOUTH OF THE CENTER EAST 1/16 CORNER. THE EAST 1/16 CORNER WAS ESTABLISHED BY TRAVERSE FROM THE GPS CONTROL NEAR THE SOUTHWEST CORNER OF SECTION 36. ALL OF THE CONTROLLING CORNERS WERE FOUND AS PREVIOUSLY RECORDED. THE WEST 1/4 CORNER AND SOUTH 1/4 CORNER WERE RECOVERED AND REFERENCED AS NOTED.



- LEGEND**
- SECTION CORNER, 1/4 CORNER FOUND AS NOTED
 - SET 3/4\"X 30\" PIPE WITH 2\" BRASS CAP, STAMPED AS NOTED
 - CALCULATED POSITION, NO MONUMENT SET
 - RECORD BEARING/DISTANCE PREVIOUS SURVEY
 - RECORD GLO DISTANCE
 - LINE MARKED WITH 1/2\"X 60\" FIBER GLASS RODS. RED AND WHITE FLAGGING ON LINE BETWEEN RODS. TREES ALONG LINE PAINTED WITH BLUE PAINT.

NOTE: NEW REFERENCES REFERENCES HAVE AN 8\" SPIKE AT BASE OF SCRIBE WITH LONGVIEW FIBRE COMPANY LOCATION TAG ABOVE SCRIBE. ALL ORIENTED TOWARD MONUMENT. DISTANCES MEASURED TO SPIKE. BEARINGS TO REFERENCES TAKEN WITH HAND COMPASS HAVING A DECLINATION OF 21°E.



FILED

NOV 15 2000

Paul John
COUNTY SURVEYOR

DEPUTY

BASIS OF BEARING
OREGON NORTH ZONE NAD83 (91)

THIS MAP CORRECTLY REPRESENTS A SURVEY MADE BY ME AT THE REQUEST OF LONGVIEW FIBRE COMPANY IN JUNE 2000.

GEORGE J. FORD, PLS
CERTIFICATE NO. 2210

REGISTERED
PROFESSIONAL
LAND SURVEYOR

George J. Ford
11/13/00

OREGON
JULY 17, 1986
GEORGE J. FORD
#2210

EXP: 12/31/00

LONGVIEW FIBRE COMPANY
PO BOX 667
LONGVIEW, WA 98632