

PARTITION IN NW 1/4, SEC. 2
T2N, R10E, WM, HOOD RIVER CO.
STATE OF OREGON
SUNNYSIDE ADDITION

RECORDS AND ASSESSMENT
HOOD RIVER CO.

Oct 3 2 02 PM '00

PARTITION PLAT NO. 200027P

Instrument received on the 3rd day of
October, 2000 at 2:02 PM

Lee K. Shih

Hood River County Director of Records
and Assessments

SURVEYS CERTIFICATE

I, Anthony C. Klein, being first duly sworn, depose and say that I have correctly surveyed and marked with proper monuments the lands represented on this Partition Plat, the boundaries being described in Instrument No. 870228 dated FEB. 5, 1987, Hood River County Records, to Harold W. And Jearoldene A. Franz

Anthony C. Klein
ANTHONY C. KLEIN PLS 932

ACKNOWLEDGEMENTS

We the owners of the land shown herein, hereby declare that this division of land has been made with our free consent and in accordance with our desires.

Harold W. Franz 9/22/00
Date
Hazel Jean Franz 9/25/00
Date
HAZEL JEAN FRANZ Date

STATE OF OREGON
COUNTY OF HOOD RIVER

Subscribed and sworn to before me on this 28 day of SEPTEMBER, 2000
by *Harold W. Franz*
Notary Public for the State of Oregon
My commission expires 2-13-2003

Jack L. Booth Jr. 9-29-00
Date
Nicole M. Booth 9/29/00
Date
NICOLE M. BOOTH Date

STATE OF OREGON
COUNTY OF HOOD RIVER

Subscribed and sworn to before me on this 29 day of SEPTEMBER, 2000
by *Nicole M. Booth*
Notary Public for the State of Oregon
My commission expires 2-13-2003

APPROVALS

I hereby certify that all taxes and assessment due hereon have been fully paid as required by law.

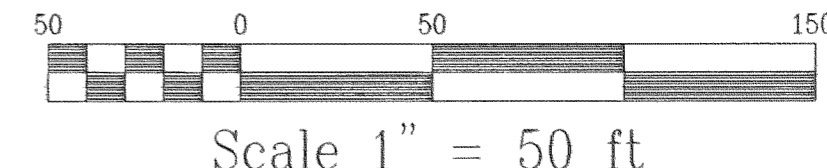
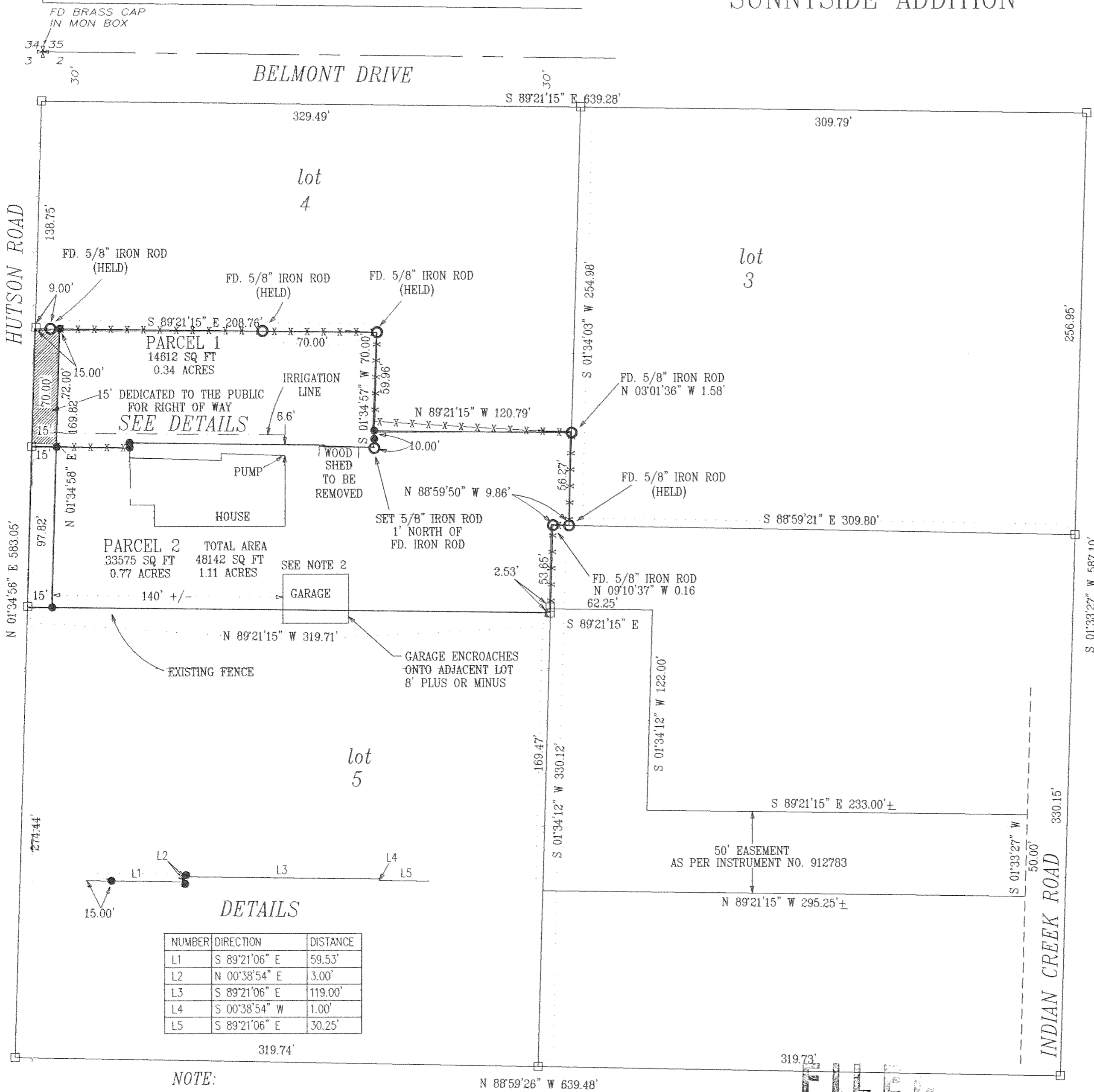
Robert D. Weaver, Sr.
Hood River County Director of Budget and Finance.

I hereby certify this partition was examined and approved as of this 28th day of SEPTEMBER, 2000

Ronald John
Hood River County Surveyor

I hereby certify this partition was examined and approved as of this 31st day of OCTOBER, 2000

W. Benedict
Hood River County Planning Director



NARRATIVE OF SURVEY

THE PURPOSE OF THIS SURVEY WAS TO COMBINE TAX LOT 2100, 2200 AND 2300 INTO ONE LOT AND DIVIDE THE LOT INTO TWO SEPRATE PARCELS. EXISTING FEATURES WERE LOCATED AND SHOWN ON THE PLAT. ALL MONUMENTS FOUND AND ESTABLISHED ALONG WITH THE MEASURED BEARINGS AND DISTANCES ARE SHOWN HEREIN.

LEGEND

- = SET 5/8" IR WITH PLASTIC CAP MARKED OR #932 & WA #22098 EXCEPT AS NOTED
- = FOUND MONUMENT AS NOTED
- = CALCULATED CORNER AS NOTED
- ⊗ = CALCULATED 1/4 COR AS NOTED
- ⊗ = CALCULATED SEC COR AS NOTED
- ⊗ = FOUND 1/4 COR AS NOTED
- ⊗ = FOUND SEC COR AS NOTED

BASIS OF BEARING
AS PER KLEIN & ASSOC. 6-10-87

REFERENCE SURVEYS
SURVEY BY DLC SURVEYING
CS #7635 & #94077
SURVEY BY KLEIN & ASSOC.
DATED: 6/10/87

OCT 3 2000
Certified to be a true and correct copy of the ORIGINAL.
Dept. of Records & Assessment
by *Lee K. Shih*, Deputy

REGISTERED PROFESSIONAL LAND SURVEYOR

OREGON
JULY 17, 1970
ANTHONY C. KLEIN
932
Expires 6-30-01



LAND SURVEYING
1203th Street Suite H
Hood River, Oregon 97031
Tele: (503)386-3322
DATE SURVEYED: SEPT. 2000
JOB NO.: 00046

PARTITION FOR HAROLD FRANZ

DETAILS

NUMBER	DIRECTION	DISTANCE
L1	S 89°21'06" E	59.53'
L2	N 00°38'54" E	3.00'
L3	S 89°21'06" E	119.00'
L4	S 00°38'54" W	1.00'
L5	S 89°21'06" E	30.25'

NOTE:
1.) ALL AREAS INCLUDE 15' PUBLIC RIGHT OF WAY
2.) THE OWNER OF PARCEL TWO WILL INITIATE A BOUNDARY LINE ADJUSTMENT FOR THE GARAGE ENCRACHING ON THE SOUTH BOUNDARY LINE TO COMPLY WITH THE SETBACKS OF R-1 URBAN LOW DENSITY RESIDENTIAL ZONE.

OCT 20 2000
Ronald John
COUNTY SURVEYOR