

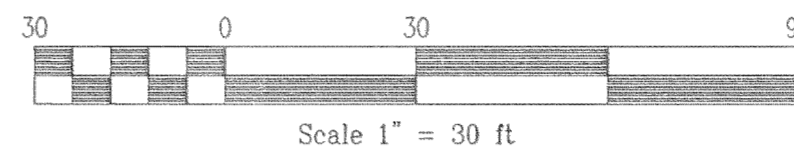
JUL 26 2000

Certified to be a true and correct copy of the ORIGINAL. Dept. of Records & Assessment by *[Signature]* Deputy

FILED RECORDS AND ASSESSMENT HOOD RIVER CO.

JUL 26 11 45 AM '00

# PARTITION IN LOT 5, DIVISION 1, SEC 6 & 7, T 2 N, R 8 E, WM CITY OF CASCADE LOCKS, STATE OF OREGON



BASIS OF BEARING EAST LINE LOT 5 AS PER CS #86038

### LEGEND

- = MARKED OR #932 & WA #22098 EXCEPT AS NOTED
- = FOUND 5/8" IRON ROD AS PER KLEIN & ASSOC. CS #92035
- = CALCULATED CORNER AS NOTED
- (XX.XX', S XXX'XX" W) = DIST & BEARING AS PER CS #86038
- - - - - = EXISTING FENCE LINE

PARTITION PLAT NO. 200023P

Instrument received on the 26<sup>th</sup> day of July, 2000 at 11:45 A.M.

Hood River County Director of Records and Assessments

### SURVEYS CERTIFICATE

I, Anthony C. Klein, being first duly sworn, depose and say that I have correctly surveyed and marked with proper monuments the lands represented on this Partition Plat, the boundaries being described in Instrument No. 831311 dated JULY 27, 1983, Hood River County Records, to LLOYD & IRMA DAVIDSON.

*[Signature]*  
ANTHONY C. KLEIN PLS 932

### ACKNOWLEDGEMENTS

We the owners of the land shown herein, hereby declare that this division of land has been made with our free consent and in accordance with our desires.

*Lloyd Davidson*  
NAME Date  
*Irma Davidson*  
NAME Date 7-24-00

STATE OF OREGON  
COUNTY OF Hood River ss

Subscribed and sworn to before me on this 20<sup>th</sup> day of July, 2000  
by *Marilyn Murray*  
MARILYN MURRAY

Notary Public for the State of Oregon  
My commission expires Jan 19, 2004

### APPROVALS

I hereby certify that all taxes and assessment due hereon have been fully paid as required by law.

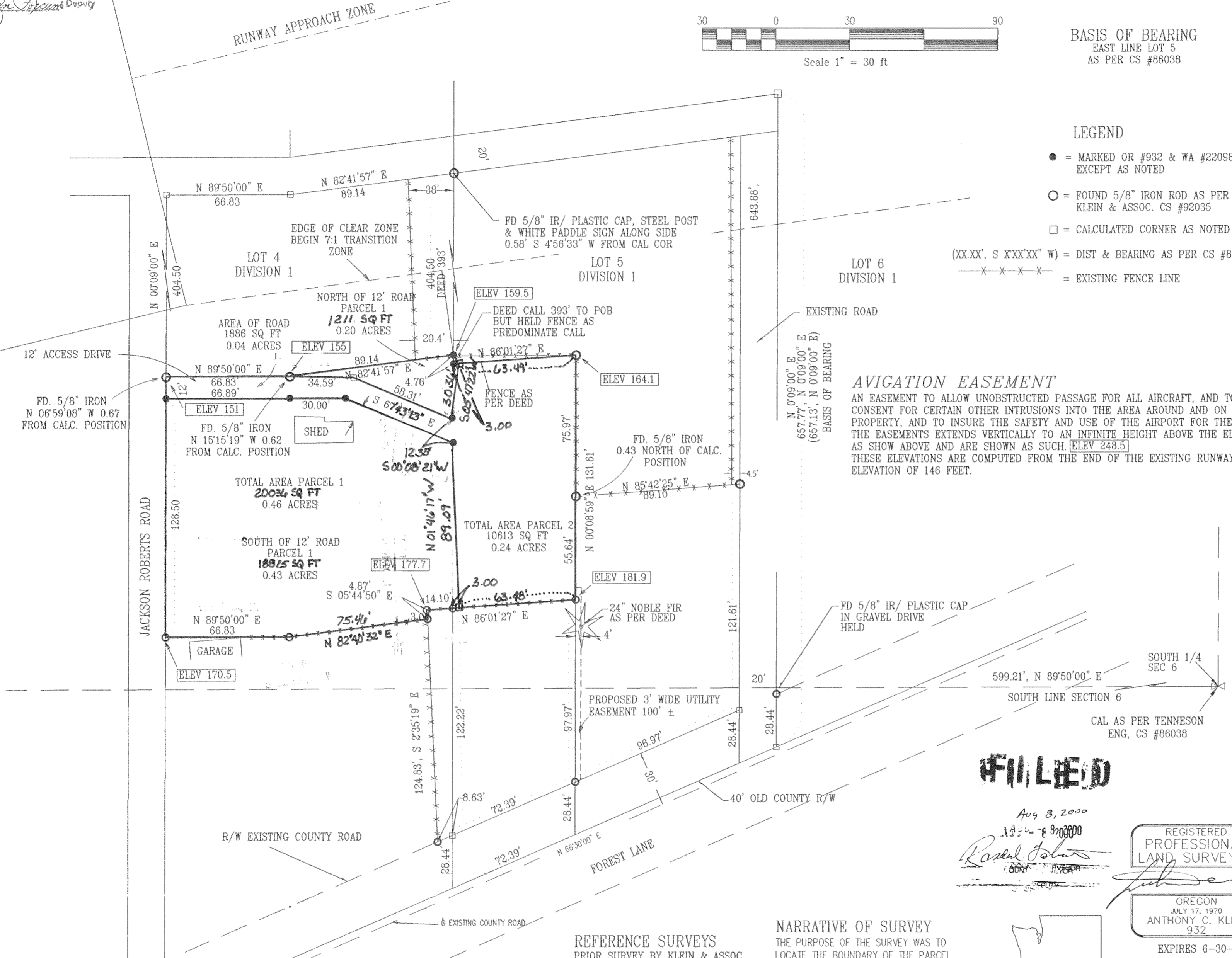
*Robert B. Reiser Sr.*  
Hood River County Director of Budget and Finance.

I hereby certify this partition was examined and approved as of this 20 day of July, 2000  
*Rita Lal*  
Hood River County Surveyor

I hereby certify this partition was examined and approved as of this 26<sup>th</sup> day of July, 2000  
*Kathy Wasley*  
City of Cascade Locks Planning Director

### AVIGATION EASEMENT

AN EASEMENT TO ALLOW UNOBSTRUCTED PASSAGE FOR ALL AIRCRAFT, AND TO OBTAIN CONSENT FOR CERTAIN OTHER INTRUSIONS INTO THE AREA AROUND AND ON THE ABOVE PROPERTY, AND TO INSURE THE SAFETY AND USE OF THE AIRPORT FOR THE PUBLIC. THE EASEMENTS EXTENDS VERTICALLY TO AN INFINITE HEIGHT ABOVE THE ELEVATIONS AS SHOWN ABOVE AND ARE SHOWN AS SUCH. [ELEV 248.5] THESE ELEVATIONS ARE COMPUTED FROM THE END OF THE EXISTING RUNWAY WITH AN ELEVATION OF 146 FEET.



REFERENCE SURVEYS  
PRIOR SURVEY BY KLEIN & ASSOC.  
JOB NO. 92035  
SURVEY BY TENNESON ENGINEERING  
MAY 1986, CS #86038

### NARRATIVE OF SURVEY

THE PURPOSE OF THE SURVEY WAS TO LOCATE THE BOUNDARY OF THE PARCEL SHOWN HEREIN. IT WAS FOUND THAT MOST OF THE FENCES DIDN'T MATCH THE BOUNDARYS IN THIS AREA. ALL MONUMENTS FOUND AND ESTABLISHED ALONG WITH THE MEASURED BEARINGS AND DISTANCES ARE SHOWN HEREIN.

**FILED**

Aug 3, 2000  
*[Signature]*  
REGISTERED PROFESSIONAL LAND SURVEYOR

REGISTERED PROFESSIONAL LAND SURVEYOR

OREGON  
JULY 17, 1970  
ANTHONY C. KLEIN  
932

EXPIRES 6-30-01



## Klein & Assoc.

LAND SURVEYING  
1203 TH ST. SUITE H  
Hood River, Oregon 97031  
Tele: (503)386-3322  
DATE SURVEYED: JULY 2000  
JOB NO.: 00040

PARTITION FOR  
LLOYD & IRMA DAVIDSON