

MINOR PARTITION IN
 NW 1/4, NE 1/4, SEC 4, T 2 N, R 10 E, WM
 COUNTY OF HOOD RIVER, STATE OF OREGON

FILES
 RECORDS AND ASSESSMENT
 HOOD RIVER, OREGON

FEB 29 10 25 AM '00

PARTITION PLAT NO. 200007P

Instrument received on the 29th day of
 February, 2000 at 10:25 AM

Hood River County Director of Records

SURVEYS CERTIFICATE

I, Anthony C. Klein, being first duly sworn, depose and say that I have correctly surveyed and marked with proper monuments the lands represented on this Partition Plat, the boundaries being described in Instrument No. 952966 dated OCTOBER 16, 1995, Hood River County Records, to CHARLES A. DEACH JR. TRUSTEE.

Anthony C. Klein
 ANTHONY C. KLEIN PLS 932

ACKNOWLEDGEMENTS

We the owners of the land shown herein, hereby declare that this division of land has been made with our free consent and in accordance with our desires.

Charles A. Deach Jr. 2-24-00
 NAME Date

NAME Date

STATE OF Alaska
 COUNTY OF Janeau ss

Subscribed and sworn to before me on this
 24 day of February, 2000
 by *William Rathe*

Notary Public for the State of Oregon
 My commission expires 07-25-01

APPROVALS

I hereby certify that all taxes and assessment due hereon have been fully paid as required by law.

Charles A. Deach Jr.
 Hood River County Director of Budget and Finance.

I hereby certify this partition was examined and approved as of this 28th day of February, 2000
Anthony C. Klein
 Hood River County Surveyor

I hereby certify this partition was examined and approved as of this 29th day of February, 2000
David Walker for Michael Benedict
 Hood River County Planning Director

FILE #99-421

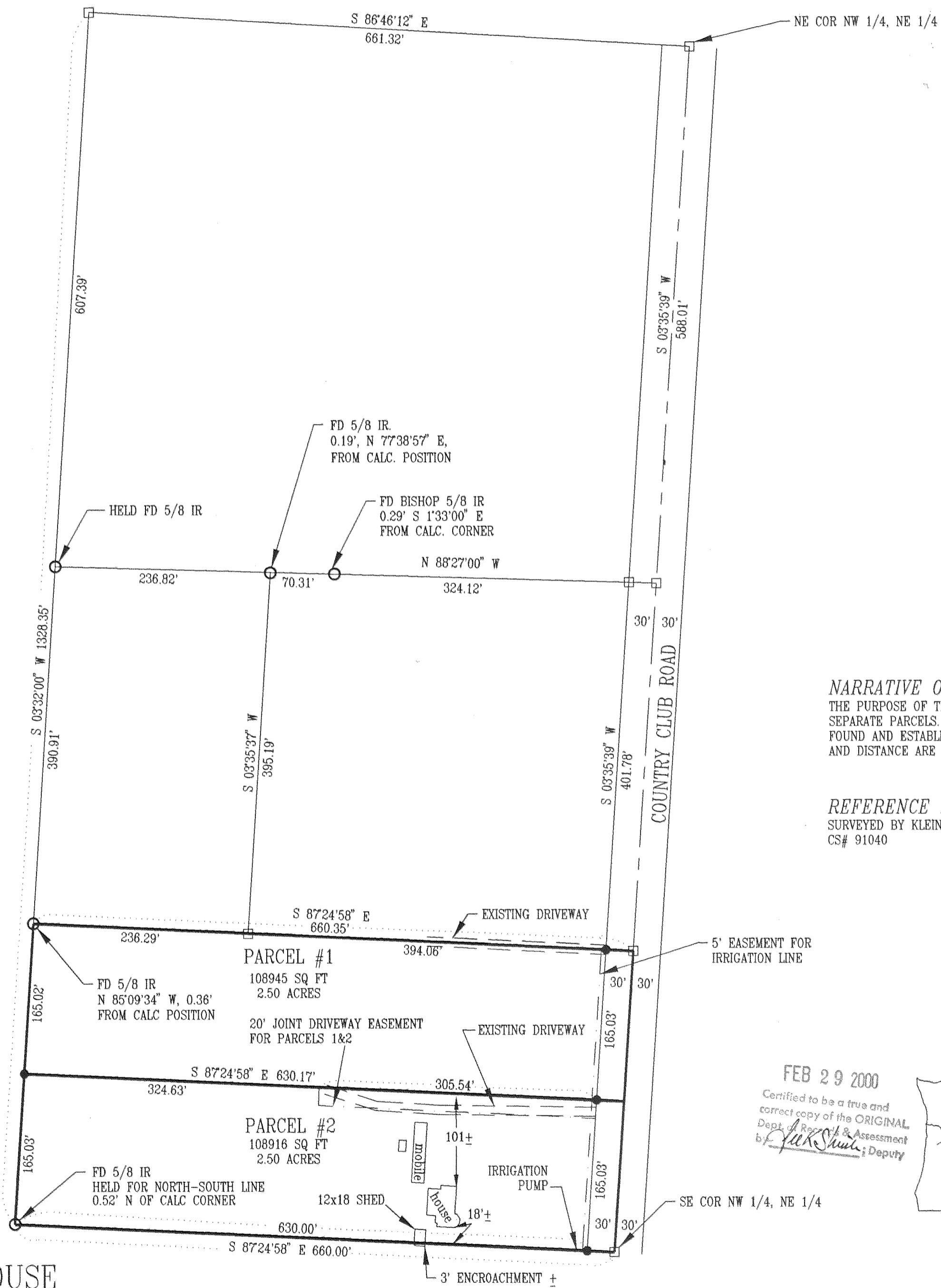
2000 021



Scale 1" = 100 ft

LEGEND

- = SET 5/8" IR WITH PLASTIC CAP MARKED OR #932 & WA #22098 EXCEPT AS NOTED
- = FOUND MONUMENT AS NOTED
- = CALCULATED CORNER AS NOTED
- ⊠ = CALCULATED 1/4 COR AS NOTED
- ⊞ = CALCULATED SEC COR AS NOTED
- ⊞ = FOUND 1/4 COR AS NOTED
- ⊞ = FOUND SEC COR AS NOTED



NARRATIVE OF SURVEY

THE PURPOSE OF THIS SURVEY IS TO DIVIDE THE LOT INTO TWO SEPARATE PARCELS. NO DESCRIPTANCY FOUND. ALL MONUMENTS FOUND AND ESTABLISHED ALONG WITH THE MEASURED BEARING AND DISTANCE ARE SHOWN HEREIN.

REFERENCE SURVEYS

SURVEYED BY KLEIN & ASSOC.
 CS# 91040

FILED
 MAR 15, 00
Paul J. Deane
 COUNTY CLERK

REGISTERED
 PROFESSIONAL
 LAND SURVEYOR
Anthony C. Klein
 OREGON
 JULY 17, 1970
 ANTHONY C. KLEIN
 932
 Expires 6-30-01

FEB 29 2000
 Certified to be a true and correct copy of the ORIGINAL
 Dept. of Records & Assessment
 by *Ally Shuck*, Deputy

Klein & Assoc.

LAND SURVEYING
 1203th Street Suite H
 Hood River, Oregon 97031
 Tele: (503)386-3322
 DATE SURVEYED: JAN. 2000
 JOB NO.: 00001

MINOR PARTITION
 FOR
 CATHERINE DEACH PRINCEHOUSE