

PARTITION IN
 NW 1/4, NW 1/4, SEC 36, T 3 N, R 10 E, WM
 LOT 5 OF BLOCK D
 CITY OF HOOD RIVER, STATE OF OREGON

FILED

FEB 25 2000
 COUNTY SURVEYOR

FILED
 RECORDS AND ASSESSMENT
 HOOD RIVER, OR.

FEB 24 9 16 AM '00

PARTITION PLAT NO. 200006P

Instrument received on the 24th day of February, 2000 at 9:16 A.M.

Hood River County Director of Records and Assessments

SURVEYS CERTIFICATE

I, Anthony C. Klein, being first duly sworn, depose and say that I have correctly surveyed and marked with proper monuments the lands represented on this Partition Plat, the boundaries being described in Instrument No. 972402 dated July 17, 1997, Hood River County Records, to Shepherd of the Valley Bible Church.

Anthony C. Klein
 ANTHONY C. KLEIN PLS 932

ACKNOWLEDGEMENTS

We the owners of the land shown herein, hereby declare that this division of land has been made with our free consent and in accordance with our desires.

Scott Winters 2/17/00
 SCOTT WINTERS Date
 PRES. OF THE CORP.
 (Shepherd of the Valley Bible Church)

STATE OF OREGON }
 COUNTY OF Hood River } ss

Subscribed and sworn to before me on this 17th day of February, 2000
 by *Mary L. Taylor*

Notary Public for the State of Oregon
 My commission expires 9-28-2005

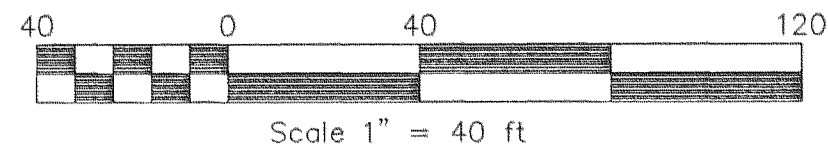
APPROVALS
 OFFICIAL SEAL
 MARY L. TAYLOR
 NOTARY PUBLIC-OREGON
 COMMISSION NO. 327542
 MY COMMISSION EXPIRES SEPT. 28, 2003

I hereby certify that all taxes and assessment due hereon have been fully paid as required by law.

Dorothy Rowley
 Hood River County Director of Budget and Finance.

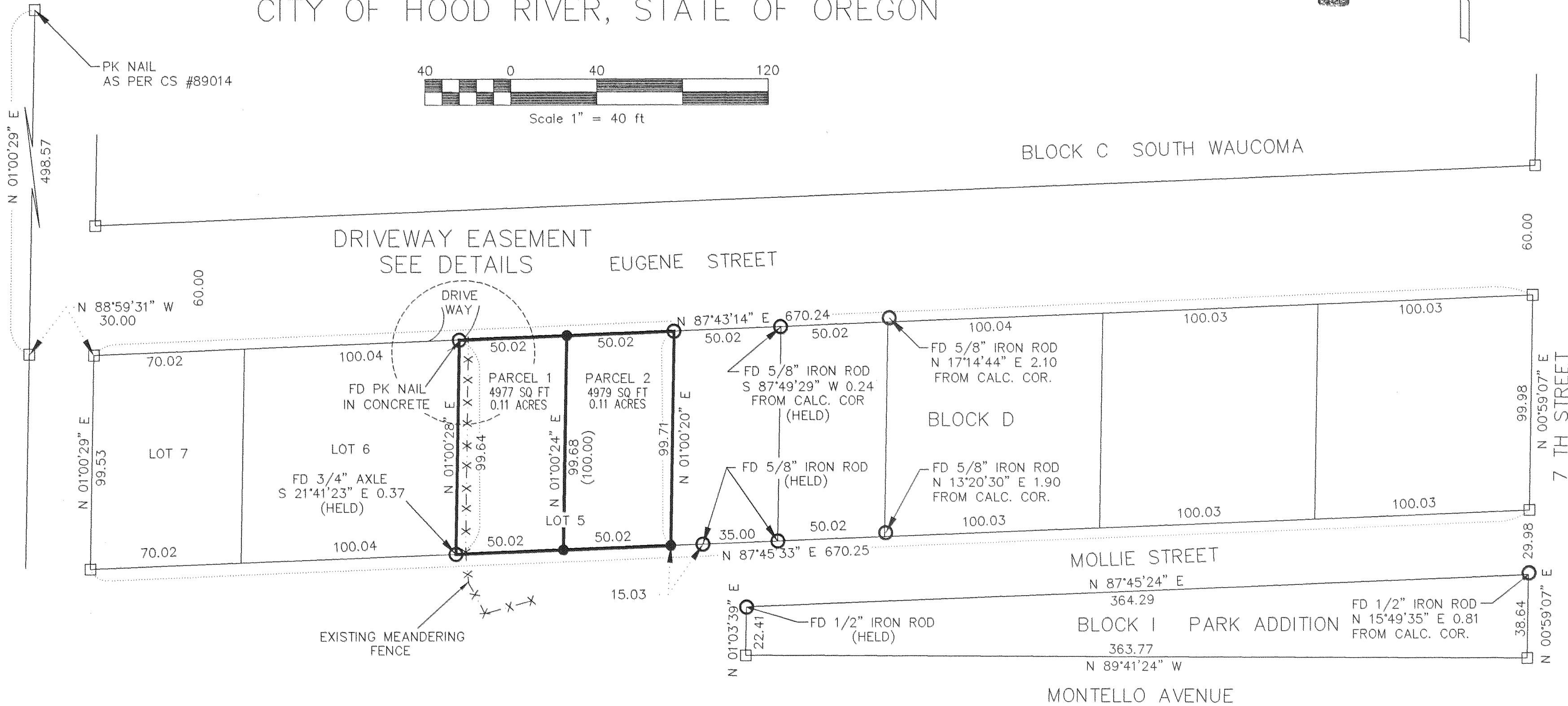
I hereby certify this partition was examined and approved as of this 23 day of February, 2000
Anthony C. Klein
 Hood River County Surveyor

I hereby certify this partition was examined and approved as of this 17 day of February, 2000
John D. ...
 City of Hood River Planning Director

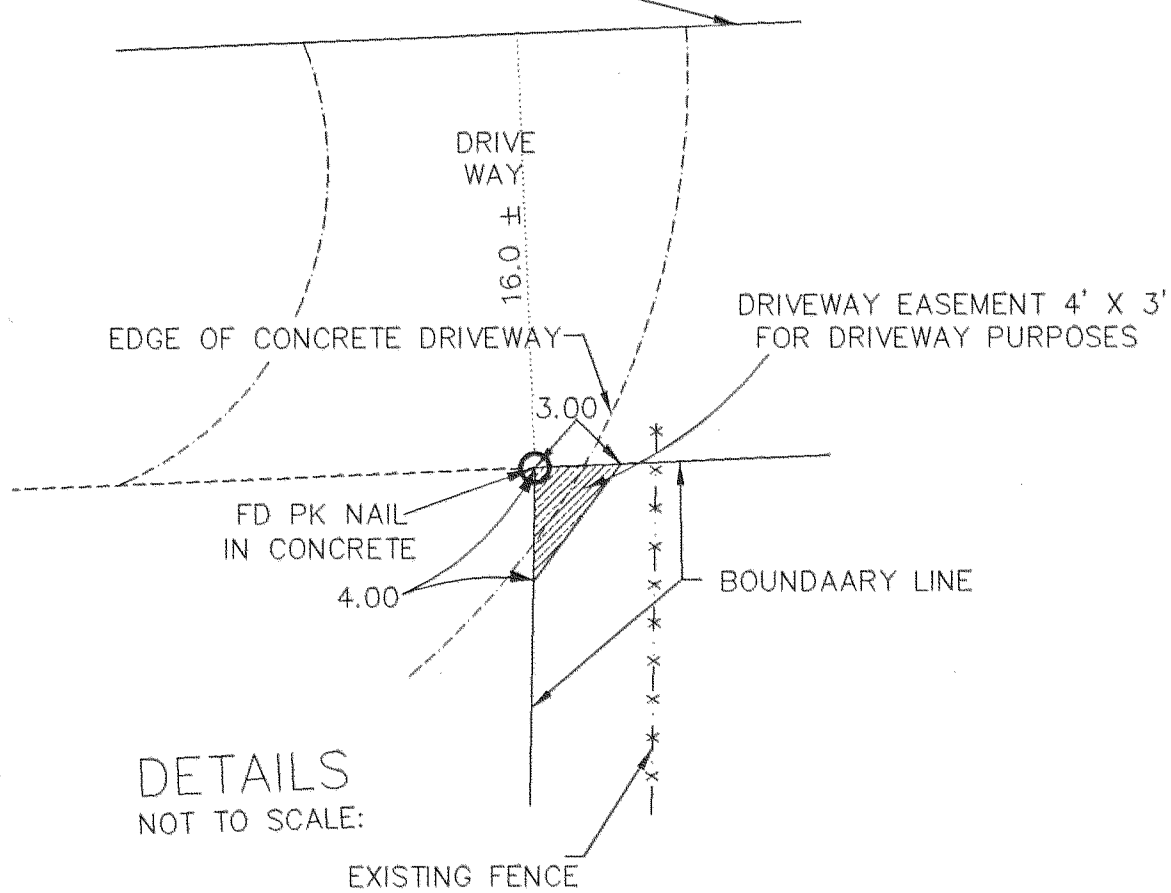


BLOCK C SOUTH WAUCOMA

DRIVEWAY EASEMENT
 SEE DETAILS
 EUGENE STREET



EDGE OF EXISTING PAVEMENT



DETAILS
 NOT TO SCALE:

NARRATIVE OF SURVEY
 THE PURPOSE OF THIS SURVEY IS TO DIVIDE LOT 5 INTO TWO SEPARATE LOTS. ALL MONUMENTS FOUND AND ESTABLISHED ALONG WITH THE MEASURED BEARINGS AND DISTANCES ARE SHOWN HEREIN.

REFERENCE SURVEYS
 SURVEY BY KLEIN & ASSOC.
 CS #97048
 SURVEY BY WYEAST SURVEYS
 CS #96031

LEGEND

- = SET 5/8" IR WITH PLASTIC CAP MARKED OR #932 & WA #22098 EXCEPT AS NOTED
- = FOUND MONUMENT AS NOTED
- = CALCULATED CORNER AS NOTED

PARTITION
 FOR
 SHEPHERD OF THE VALLEY
 BIBLE CHURCH

FEB 24 2000
 Certified to be a true and correct copy of the ORIGINAL.
 Dept. of Records & Assessment
 by *John D. ...*; Deputy



REGISTERED
 PROFESSIONAL
 LAND SURVEYOR

OREGON
 JULY 17, 1970
 ANTHONY C. KLEIN
 932

EXPIRES 6-30-01

Klein & Assoc.

LAND SURVEYING
 1109 Country Club Road
 Hood River, Oregon 97031
 Tele: (503)386-3322
 DATE SURVEYED: OCT. 98
 JOB NO.: 98071