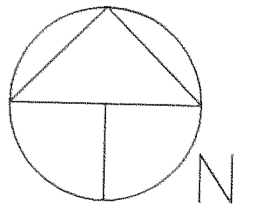


HOOD RIVER COUNTY  
BK 22 PG 118  
BK 25 PG 114  
BK 28 PG 11  
BK 47 PG 118  
BK 80 PG 38  
BK 81 PG 152

NORMAN NELSON  
BK30 PG 41

FD 1 1/2" IRON PIPE  
WITH HOOD RIVER COUNTY  
BRASS CAP  
AS PER CORNER CARD REFERENCE  
SET 6' METAL FENCE POST  
WITH LOCATION TAG

FD 1 1/2" IRON PIPE  
WITH HOOD RIVER COUNTY  
BRASS CAP  
AS PER CORNER CARD REFERENCE  
CORNER IS BENT



Scale 1" = 400 ft

SURVEY IN  
NW 1/4, SEC 32, T 2 N, R 10 E, WM  
COUNTY OF HOOD RIVER  
STATE OF OREGON

LEGEND

- = FOUND MONUMENT AS NOTED
- = CALCULATED CORNER AS NOTED
- ⊠ = CALCULATED 1/4 COR AS NOTED
- ⊞ = CALCULATED SEC COR AS NOTED
- ⊞ = FOUND 1/4 COR AS NOTED
- ⊞ = FOUND SEC COR AS NOTED
- ⊞ = SET 1/2" FIBER CLASS RODS AT APPROX 200' INTERVALS ALONG LINE

REFERENCE SURVEYS

SURVEY BY HOOD RIVER COUNTY, APRIL 1983  
COUNTY SURVEY NO. 83079

NARRATIVE OF SURVEY

THE PURPOSE OF THE SURVEY WAS TO MARK THE EAST, SOUTH, AND WEST LINE OF THE NORTHWEST QUARTER OF SECTION 32. THE NE CORNER, NW CORNER, AND THE EAST QUARTER CORNER WERE TIED WITH GPS. A TRAVERSE WAS RAN ALONG THE LINES TO BE STAKED FROM THE NW COR TO THE NORTH QUARTER CORNER. THE SW CORNER WAS TIED WITH EDM FROM THE TRAVERSE LINE. SEE CORNER NOTES FOR CORNER INFORMATION. ALL MONUMENTS FOUND AND ESTABLISHED ALONG WITH THE MEASURED BEARINGS AND DISTANCES ARE SHOWN HEREIN. ALSO THE THE RELATIONSHIP BETWEEN THE COUNTY'S MEASUREMENTS ARE SHOWN.

**FILED**

OCT 27, 1999  
*Rick G. All*  
COUNTY SURVEYOR

REGISTERED  
PROFESSIONAL  
LAND SURVEYOR

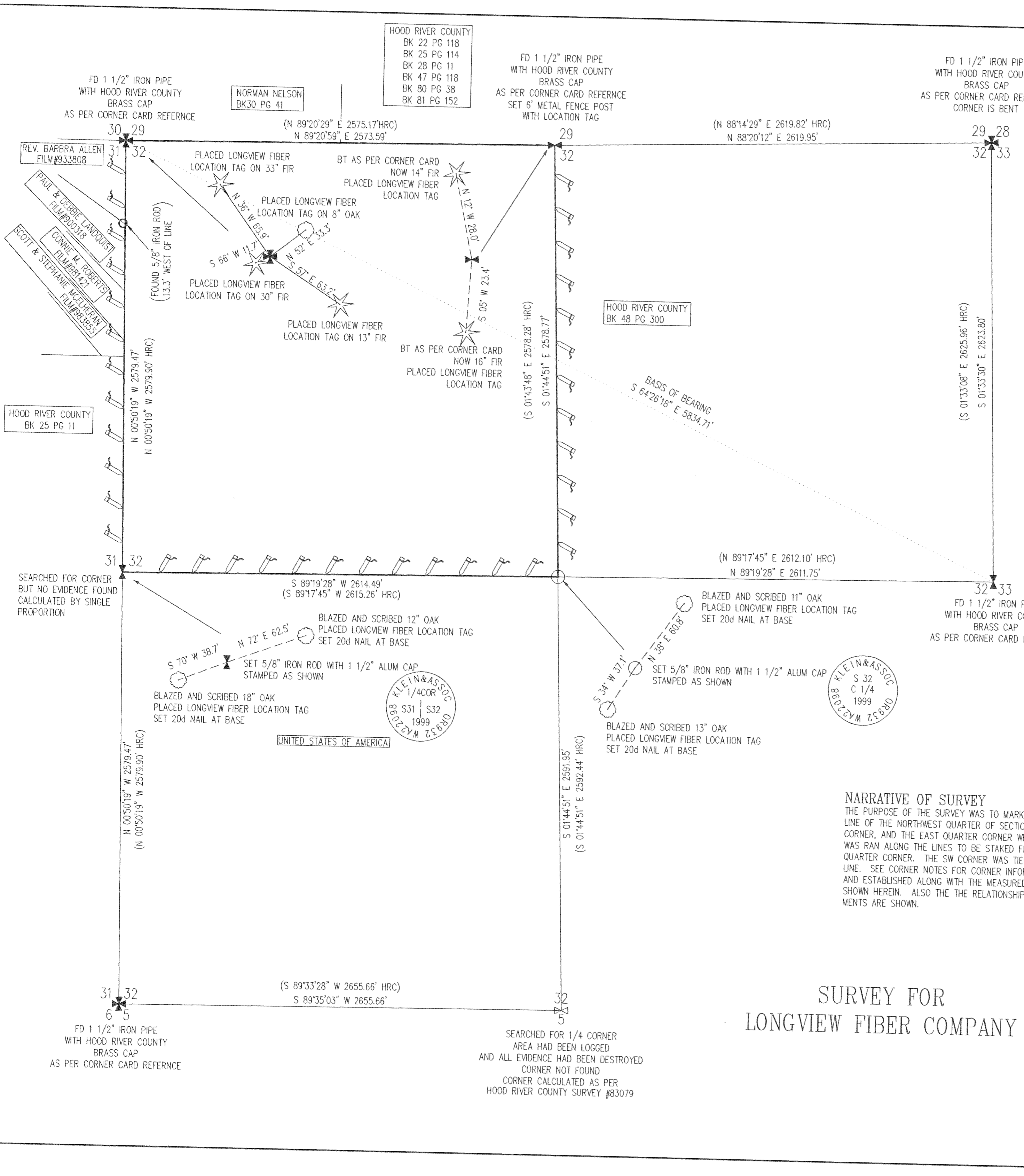
OREGON  
JULY 17, 1970  
ANTHONY C. KLEIN  
932  
Expires 6-30-01



**Klein & Assoc.**

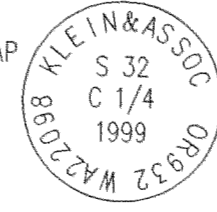
LAND SURVEYING  
1203 12th STREET SUITE H  
Hood River, Oregon 97031  
Tele: (541)386-3322  
DATE SURVEYED: JULY 1999  
JOB NO.: 99039

SURVEY FOR  
LONGVIEW FIBER COMPANY



HOOD RIVER COUNTY  
BK 25 PG 11

HOOD RIVER COUNTY  
BK 48 PG 300



UNITED STATES OF AMERICA

SEARCHED FOR 1/4 CORNER  
AREA HAD BEEN LOGGED  
AND ALL EVIDENCE HAD BEEN DESTROYED  
CORNER NOT FOUND  
CORNER CALCULATED AS PER  
HOOD RIVER COUNTY SURVEY #83079