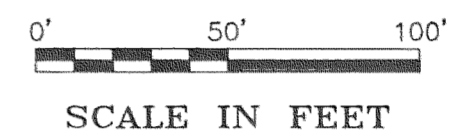
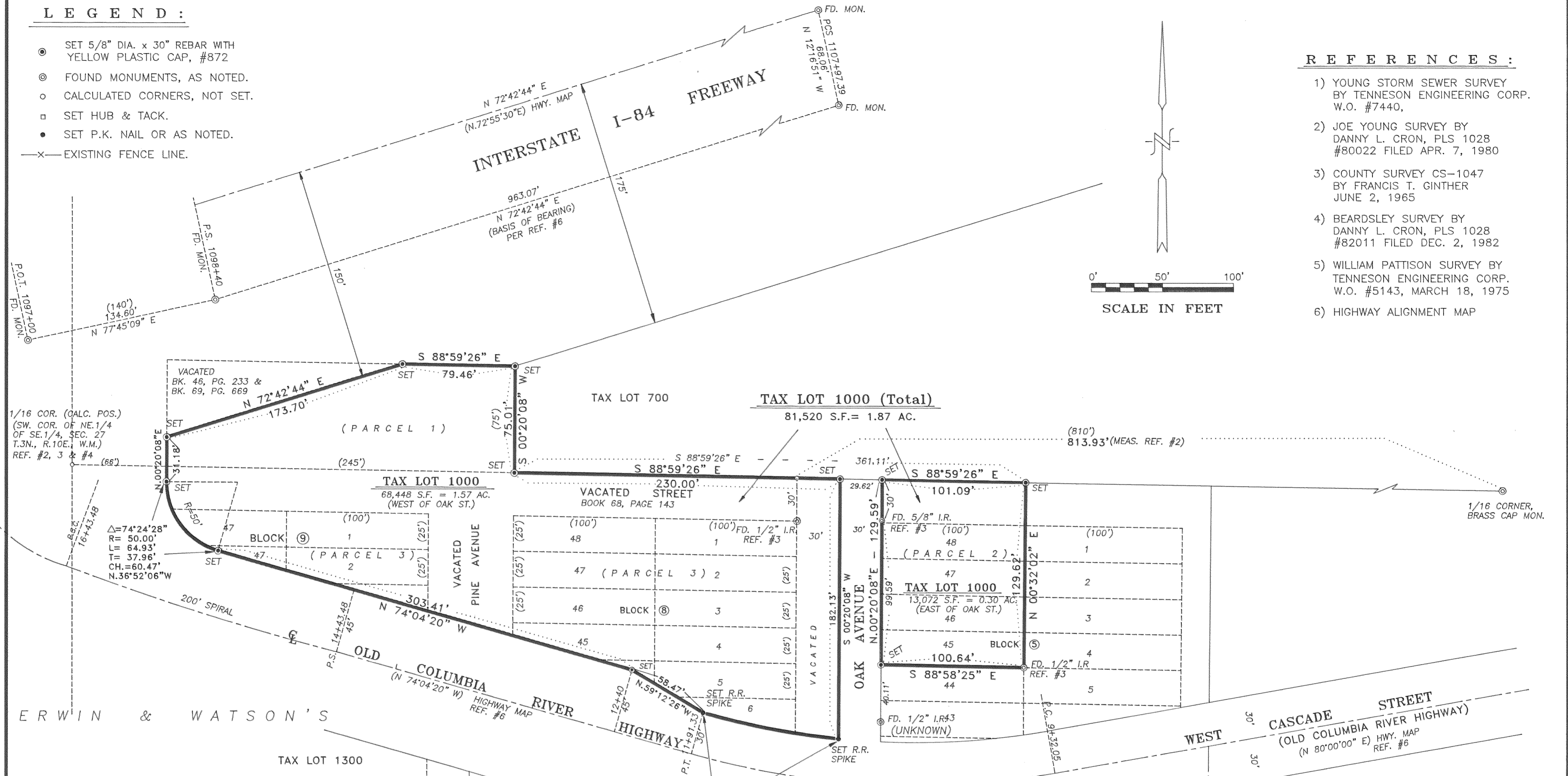


LEGEND :

- SET 5/8" DIA. x 30" REBAR WITH YELLOW PLASTIC CAP, #872
- ⊙ FOUND MONUMENTS, AS NOTED.
- CALCULATED CORNERS, NOT SET.
- SET HUB & TACK.
- SET P.K. NAIL OR AS NOTED.
- x- EXISTING FENCE LINE.

REFERENCES :

- 1) YOUNG STORM SEWER SURVEY BY TENNESON ENGINEERING CORP. W.O. #7440,
- 2) JOE YOUNG SURVEY BY DANNY L. CRON, PLS 1028 #80022 FILED APR. 7, 1980
- 3) COUNTY SURVEY CS-1047 BY FRANCIS T. GINTHER JUNE 2, 1965
- 4) BEARDSLEY SURVEY BY DANNY L. CRON, PLS 1028 #82011 FILED DEC. 2, 1982
- 5) WILLIAM PATTISON SURVEY BY TENNESON ENGINEERING CORP. W.O. #5143, MARCH 18, 1975
- 6) HIGHWAY ALIGNMENT MAP



1/16 COR. (CALC. POS.)
(SW. COR. OF NE 1/4
OF SE 1/4, SEC. 27
T.3N., R.10E., W.M.)
REF. #2, 3 & #4 (66')

$\Delta = 74^{\circ}24'28''$
R = 50.00'
L = 64.93'
T = 37.96'
CH. = 60.47'
N.36^{\circ}52'06'' W

$\Delta = 10^{\circ}17'29''$
R = 542.96'
L = 48.89'
T = 97.53'
CH. = 97.39'
N.79^{\circ}13'04'' W

10' C.R.
D = 25^{\circ}55'40''
R = 572.96'
T = 131.90'

NARRATIVE :

PURPOSE OF THE SURVEY IS TO LOCATE THE EXTERIOR BOUNDARIES OF TAX LOT 100, ASSESSOR'S MAP 3N-10-27D, BEING A PORTION OF ERWIN AND WATSON'S SECOND ADDITION, BLOCKS 5, 8, AND 9, METES AND BOUNDS, AND A PARCEL LOCATED BETWEEN OLD COLUMBIA RIVER HIGHWAY AND INTERSTATE I-84.

PRIOR SURVEYS BY DAN CRON, C.S. 80022 AND 82011, ESTABLISHED POINTS WITHIN THE BOUNDARIES OF ERWIN AND WATSON'S SECOND ADDITION, INCLUDING DEVELOPMENT OF THE PERIMETER BOUNDARY OF SAID ADDITION. SURVEY BY TENNESON ENGINEERING CORPORATION FOR MRS. YOUNG ON A STORM SEWER, TENNESON ENGINEERING CORPORATION WORK ORDER #7740, AND FOR WILLIAM PATTERSON, TENNESON ENGINEERING CORPORATION WORK ORDER #5143, RELATED TO THE SAME SURVEY MONUMENTS WITHIN ERWIN AND WATSON'S SECOND ADDITION, ESPECIALLY ALONG THE RIGHT-OF-WAY OF MT. ADAMS AVENUE. TRAVERSE TIES OF FOUND MONUMENTS ON THE RECORD SURVEYS ESTABLISHED SUBDIVISION POSITION WITHIN THE SOUTHEAST 1/4 OF THE SOUTHEAST 1/4 OF SECTION 27. OSHD HIGHWAY ALIGNMENT MAP FOR HIGHWAY I-84 PROVIDED MONUMENTATION INFORMATION ON CENTERLINE OF I-84 RIGHT-OF-WAY AND ALSO ACQUIRED WIDENING FOR INTERCHANGE ON TIE-IN WITH OLD COLUMBIA RIVER HIGHWAY, U.S. 30.

PRIOR MONUMENTATION RECOVERED IN THE FIELD ALONG EAST SIDE OF MT. ADAMS AVENUE RIGHT-OF-WAY PRODUCED NORTHERLY ON LAYOUT OF PLAT, FINDING PRIOR ESTABLISHED BLOCK CORNERS OF BLOCKS 5 AND 8, BY GINTHER, C.S. 1047, MATCHING PLAT LAYOUT. ALSO FOUND OFFSET MONUMENTS ON CENTERLINE OF INTERSTATE I-84 TO ESTABLISH ALIGNMENT AND STATIONING ON SAID HIGHWAY.

USING FOUND MONUMENTS AS BASIS OF EXTERIOR OF ERWIN AND WATSON'S SECOND ADDITION, PLAT DEVELOPED INCLUDING NORTH LINE, BEING THE SECTIONAL SUBDIVISION LINE. FREEWAY RIGHT-OF-WAY INFORMATION DEVELOPED LAYOUT OF OLD COLUMBIA RIVER HIGHWAY FRONTAGE AND METES AND BOUNDS PARCEL ABUTTING SOUTH RIGHT-OF-WAY OF FREEWAY. AT MISSING CORNERS SET 5/8" x 30" IRON RODS WITH PLASTIC CAP #872. FOUND AND SET MONUMENTS AS SHOWN ON ATTACHED PLAT.

FILED

APR 21, 1999
R. L. Tuttle
COUNTY CLERK

REGISTERED
PROFESSIONAL
LAND SURVEYOR
David L. Tuttle
OREGON
DAVID L. TUTTLE
JULY 12, 1980
8 7 2

EXPIRES: 12/31/99

Date	No.	Revisions	By	App.
SURVEY FOR HATTENHAUER DISTRIBUTING CO. TAX LOT 1000, 3N-10-27D IN ERWIN & WATSON'S 2ND. ADDITION IN THE S.E.1/4, SECTION 27, TWP.3 N., RGE.10E. W.M. HOOD RIVER, HOOD RIVER COUNTY, OREGON				
TENNESON ENGINEERING CORP. CONSULTING ENGINEERS 409 LINCOLN STREET THE DALLES, OREGON 97058 541-296-9177 FAX 541-296-6657				
Survey D.L.T.	Design	Checked <i>[Signature]</i>	Date 3-04-99	Scale 1"=50'
Drawn S.D.H.	DWG. No. S8618	Approved <i>[Signature]</i>	Work Order No. 8618	Sheet 1 of 1