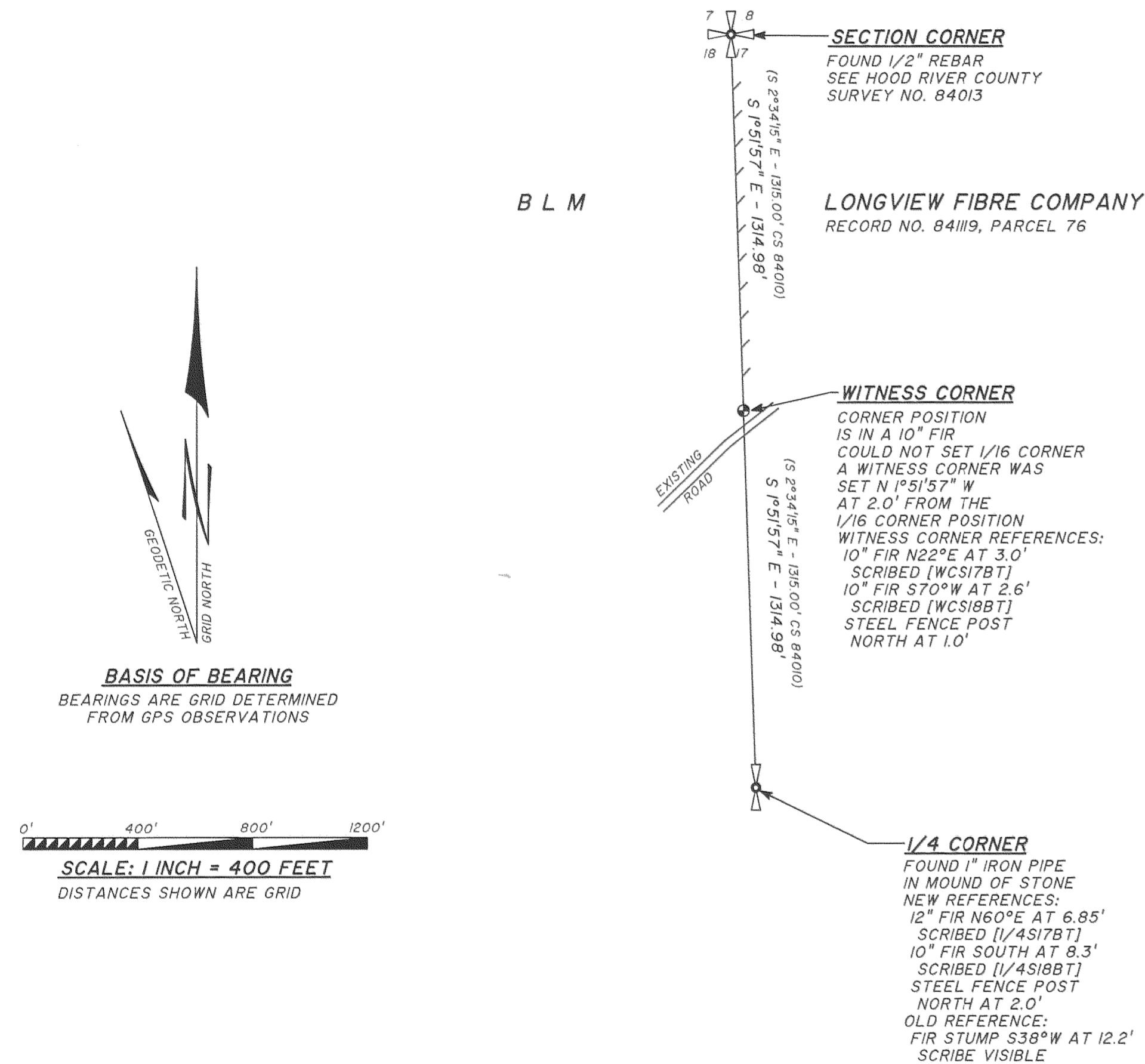


RECORD OF SURVEY
FOR
LONGVIEW FIBRE COMPANY
IN THE NW 1/4
SECTION 17, T 1 N, R 11 E, W.M.
HOOD RIVER COUNTY, OREGON

MAY 6, 1998

NARRATIVE

THE PURPOSE OF THIS SURVEY WAS TO LOCATE THE WEST LINE OF THE NORTHWEST 1/4 OF THE NORTHWEST 1/4 OF SECTION 17. THE NORTHWEST SECTION CORNER OF SECTION 17 WAS ESTABLISHED BY DOUBLE PROPORTION IN SURVEY BY DIELSCHNEIDER DATED APRIL 1971. DIELSCHNEIDER'S SURVEY WAS NOT ACCEPTED BY SUBSEQUENT SURVEYS. SURVEY BY DAN J. NEVIN FOR CHAMPION INTERNATIONAL CORP., DATED 1983 PROPORTIONED THE SECTION CORNER, SEE CS 84010. THE POSITION WAS HELD IN SURVEY BY HOOD RIVER COUNTY, SEE CS 84013. THE 1/4 CORNER BETWEEN SECTIONS 17 AND 18 IS BASED ON ORIGINAL EVIDENCE AS NOTED ON CS 84013. THIS SURVEY WAS DONE WITH TWO LEICA 399 GPS RECEIVERS AND A WILD T1610 THEODOLITE WITH WILD D15 EDM. A CONTROL TRAVERSE WAS RUN BY DIFFERENTIAL GPS, STARTING AT PONDER 2, THROUGH 2 CONTROL POINTS NEAR THE PROJECT AND BACK TO PONDER 2. A TRAVERSE WITH THE THEODOLITE AND EDM WAS RUN FROM THE 1/4 CORNER TO THE SECTION CORNER. TWO POINTS OF THE TRAVERSE WERE COORDINATED USING DIFFERENTIAL GPS. THE TRAVERSE WAS THEN SCALED AND ROTATED TO STANE PLANE GRID.



LEGEND

- SECTION CORNER, 1/4 CORNER FOUND AS NOTED
- 3/4"x 36" PIPE WITH BRASS CAP STAMPED ESTABLISHED THIS SURVEY
- LINE MARKED WITH 1/2" x 6' FIBER GLASS RODS RED AND WHITE FLAGGING ON LINE, TREES ALONG LINE PAINTED WITH BLUE PAINT
- RECORD BEARING AND/OR DISTANCE, AS NOTED

FILED

JUN 15, 1998
Richard A. Swadlow
COUNTY SURVEYOR

STATE PLANE NAD83 (91) NORTH ZONE

CORNER	NORTHING	EASTING	CONVERGENCE	SCALE FACTOR
SECTION CORNER	698319.84	7950490.62	-00°41'48.9"	0.9999201
1/16 CORNER	697005.56	7950533.44	-00°41'48.3"	0.9999196
1/4 CORNER	695691.28	7950576.26	-00°41'47.7"	0.9999192

NOTE:
NEW REFERENCES HAVE AN 8" SPIKE AT BASE OF SCRIBE ORIENTED TOWARD MONUMENT, LONGVIEW FIBRE COMPANY LOCATION TAG ABOVE SCRIBE ORIENTED TOWARD MONUMENT. A 6' STEEL FENCE POST WITH LONGVIEW FIBRE COMPANY LOCATION TAG ALSO NOTED AS REFERENCE. BEARINGS TAKEN WITH HAND COMPASS, DECL. 21-1/2° E, DISTANCES TO REFERENCES MEASURED TO SPIKE. (UNLESS NOTED OTHERWISE)

THIS MAP CORRECTLY REPRESENTS A SURVEY MADE BY ME AT THE REQUEST OF LONGVIEW FIBRE COMPANY IN APRIL 1998.

LONGVIEW FIBRE COMPANY
PO BOX 667
LONGVIEW, WA 98632

GEORGE J. FORD, PLS
CERTIFICATE NO. 2210

REGISTERED
PROFESSIONAL
LAND SURVEYOR

George J. Ford
DATE SIGNED: 5-12-98

OREGON
DECEMBER 31, 1997
GEORGE J. FORD
2210

EXPIRATION DATE: 12/31/99

DRAWN BY GEORGE J. FORD